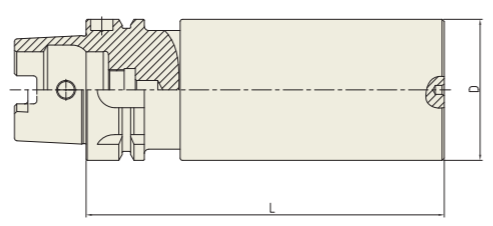


YG BLANK BAR

BL

BLANK BAR
 BOHRSTANGENROHLING
 EBAUCHE DE BARRES D'ALÉSAGE
 BARRA ALESATRICE GREZZA
 PIEZA EN BRUTO PARA BARRAS DE MANDRINAR

HSK-A



Unit : mm

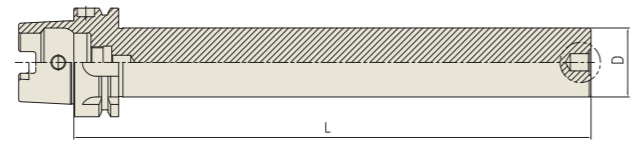
TAPER No.	MODEL No.	EDP No.	D	L	WEIGHT(Kg)
63A	HSK63A-BL63-160	P2779198	63	160	3.91
100A	HSK100A-BL97-250	P2779199	97	250	17.70

YG TEST BAR

TB

TEST BAR
 KONTROLLDORN
 MANDRIN DE CONTRÔLE
 MANDRINO DI CONTROLLO
 MANDRIL DE CONTROL

HSK-A



Unit : mm

TAPER No.	MODEL No.	EDP No.	D	L	WEIGHT(Kg)
63A	HSK63A-TB40-300	P2802303	40	300	2.90
100A	HSK100A-TB50-300	P2802304	50	300	6.17

YG-1 TOOLING SYSTEM

STRAIGHT

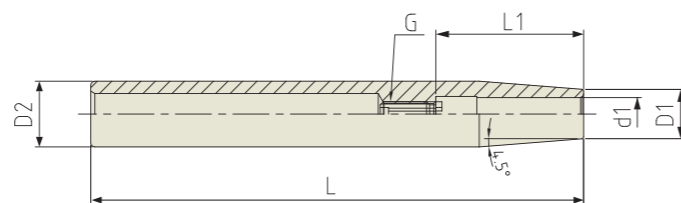


- SHRINK FIT HOLDER - EXTENSION
- ER COLLET CHUCK
- SK SLIM CHUCK
- SYNCHRO TAPPING CHUCK
- ONE STEP TAPPING CHUCK
- TAPPING CHUCK
- NC DRILL CHUCK (KEYLESS TYPE)

SHRINK FIT HOLDER - EXTENSION

SCHRUMPFUTTER (VERLÄGERUNG)
 MANDRIN DE FRETAGE (EXTENSION)
 MADRINI PER CALLETAMENTO A CALDO (PROLUNGHE)
 PORTAHERRAMIENTAS DE COMPRESION POR CALOR (EXTENSION)

STRAIGHT



Unit : mm

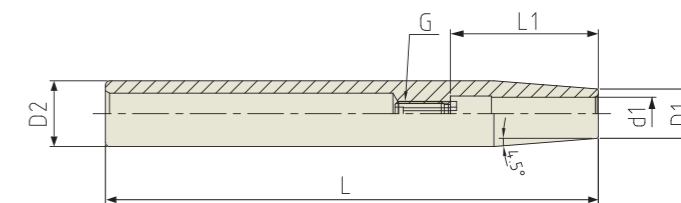
TAPER No.	MODEL No.	EDP No.	d1	D1	D2	L	L1	G	WEIGHT (Kg)
12	ST12-SFH3-120	P2767010	3	8	12	120	10	-	0.05
	ST12-SFH4-120	P2767015	4	8	12	120	12	-	0.05
	ST12-SFH5-120	P2771701	5	10	12	120	15	-	0.08
	ST12-SFH6-120	P2771709	6	10	12	120	36	M5×0.8	0.07
16	ST16-SFH3-120	P2767110	3	10	16	120	10	-	0.14
	ST16-SFH4-120	P2767115	4	10	16	120	12	-	0.14
	ST16-SFH5-120	P2771702	5	10	16	120	15	-	0.14
	ST16-SFH6-120	P2771710	6	10	16	120	36	M5×0.8	0.14
	ST16-SFH8-120	P2771711	8	12	16	120	36	M6×1.0	0.12
20	ST20-SFH3-120	P2771703	3	10	20	120	10	-	0.21
	ST20-SFH4-120	P2771704	4	10	20	120	12	-	0.21
	ST20-SFH5-120	P2771705	5	10	20	120	15	-	0.20
	ST20-SFH6-120	P2771712	6	10	20	120	36	M5×0.8	0.20
	ST20-SFH8-120	P2771713	8	12	20	120	36	M6×1.0	0.19
	ST20-SFH10-120	P2771714	10	14	20	120	43	M8×1.0	0.20
	ST20-SFH12-120	P2771715	12	16	20	120	48	M10×1.0	0.18

► Inch type products are available.

SHRINK FIT HOLDER - EXTENSION

SCHRUMPFUTTER (VERLÄGERUNG)
 MANDRIN DE FRETAGE (EXTENSION)
 MADRINI PER CALLETAMENTO A CALDO (PROLUNGHE)
 PORTAHERRAMIENTAS DE COMPRESION POR CALOR (EXTENSION)

STRAIGHT



Unit : mm

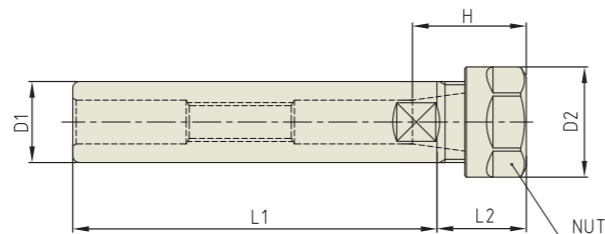
TAPER No.	MODEL No.	EDP No.	d1	D1	D2	L	L1	G	WEIGHT (Kg)	
12	ST12-SFH3-160	P2767020	3	8	12	160	10	-	0.07	
	ST12-SFH4-160	P2767025	4	8	12	160	12	-	0.07	
	ST12-SFH5-160	P2771706	5	10	12	160	15	-	0.10	
	ST12-SFH6-160	P2767030	6	10	12	160	36	M5×0.8	0.13	
16	ST16-SFH3-160	P2767120	3	10	16	160	10	-	0.20	
	ST16-SFH4-160	P2767125	4	10	16	160	12	-	0.20	
	ST16-SFH5-160	P2771707	5	10	16	160	15	-	0.20	
	ST16-SFH6-160	P2767130	6	10	16	160	36	M5×0.8	0.19	
	ST16-SFH8-160	P2767135	8	12	16	160	36	M6×1.0	0.16	
	ST16-SFH10-160	P2767140	10	14	16	160	43	M8×1.0	0.16	
20	ST20-SFH3-160	P2767210	3	10	20	160	10	-	0.30	
	ST20-SFH4-160	P2767215	4	10	20	160	12	-	0.30	
	ST20-SFH5-160	P2771708	5	10	20	160	15	-	0.29	
	ST20-SFH6-160	P2767220	6	10	20	160	36	M5×0.8	0.29	
	ST20-SFH8-160	P2767225	8	12	20	160	36	M6×1.0	0.27	
	ST20-SFH10-160	P2767230	10	14	20	160	43	M8×1.0	0.27	
	ST20-SFH12-160	P2767235	12	16	20	160	48	M10×1.0	0.23	
	25	ST25-SFH3-160	P2771716	3	10	25	160	10	-	0.41
		ST25-SFH4-160	P2771717	4	10	25	160	12	-	0.39
		ST25-SFH5-160	P2771718	5	15	25	160	15	-	0.50
ST25-SFH6-160		P2771719	6	20	25	160	36	M5×0.8	0.55	
ST25-SFH8-160		P2771720	8	20	25	160	36	M6×1.0	0.51	
ST25-SFH10-160		P2771721	10	20	25	160	43	M8×1.0	0.50	
ST25-SFH12-160		P2771722	12	20	25	160	48	M10×1.0	0.44	
ST25-SFH14-160		P2771723	14	20	25	160	48	M10×1.0	0.40	
ST25-SFH16-160		P2771724	16	22	25	160	51	M12×1.0	0.39	
32		ST32-SFH6-160	P2771725	6	20	32	160	36	M5×0.8	0.92
	ST32-SFH8-160	P2771726	8	20	32	160	36	M6×1.0	0.88	
	ST32-SFH10-160	P2771727	10	24	32	160	43	M8×1.0	0.83	
	ST32-SFH12-160	P2771728	12	24	32	160	48	M10×1.0	0.78	
	ST32-SFH14-160	P2771729	14	27	32	160	48	M10×1.0	0.78	
	ST32-SFH16-160	P2771730	16	27	32	160	51	M12×1.0	0.76	
32	ST32-SFH18-160	P2771731	18	27	32	160	51	M12×1.0	0.63	
	ST32-SFH20-160	P2771732	20	27	32	160	53	M16×1.0	0.60	

► Inch type products are available.

ER COLLET CHUCK (STANDARD)

SPANN FUTTER - ER
MANDRIN À PINCES - ER
MANDRINO PORTA PINZE - ER
PORTAPINZAS - ER

STRAIGHT-K



Unit : mm

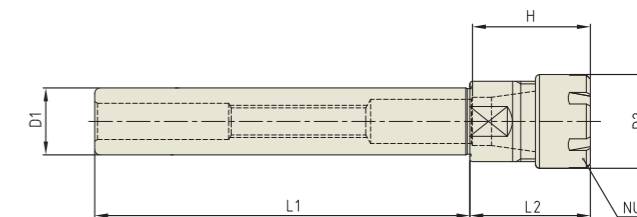
TAPER No.	MODEL No.	EDP No.	CLAMPING RANGE	D1	D2	L1	L2	H	NUT / COLLET	WEIGHT (Kg)
16	K16-ER11-100	P2772201	0.5 - 7.0	16	19	100	32	27	ER11	0.15
	K16-ER16-100	P2772219	0.5 - 10.0	16	28	100	36	32.6	ER16	0.18
20	K20-ER16-100	P2772202	0.5 - 10.0	20	28	100	36	35.6	ER16	0.25
	K20-ER20-100	P2772203	0.5 - 13.0	20	34	100	40	38	ER20	0.29
25	K20-ER25-100	P2772220	1.0 - 16.0	20	42	100	50	44	ER25	0.35
	K25-ER20-100	P2772221	0.5 - 13.0	25	34	100	40	71.6	ER20	0.40
32	K25-ER25-100	P2772204	1.0 - 16.0	25	42	100	50	43.1	ER25	0.45
	K32-ER16-100	P2772222	0.5 - 10.0	32	28	100	36	-	ER16	0.50
32	K32-ER20-100	P2772223	0.5 - 13.0	32	34	100	40	71.6	ER20	0.66
	K32-ER25-100	P2772224	1.0 - 16.0	32	42	100	50	71.1	ER25	0.75
	K32-ER32-100	P2772225	1.0 - 20.0	32	50	100	58	78	ER32	1.00

▶ For applicable ER collet, please refer to page D296~D304.
▶ For applicable ER nut, Sealing disk and Spanner, please refer to page D305~D309.

EXTENSION ER COLLET CHUCK (SLIM)

VERLÄNGERUNG SPANN FUTTER (SCHLANK)
EXTENSION MANDRIN À PINCES (MINCE)
PROLUNGHE MANDRINO PORTA PINZE (SOTTILE)
EXTENSION PORTAPINZAS (DELGADO)

STRAIGHT-K



Unit : mm

TAPER No.	MODEL No.	EDP No.	CLAMPING RANGE	D1	D2	L1	L2	H	NUT / COLLET	WEIGHT (Kg)
12	K12-ER8M-70	P2772205	0.5 - 5.0	12	12	70	25.0	38.0	ER8M / ER8	0.10
	K12-ER8M-100	P2780001	0.5 - 5.0	12	12	100	25.0	38.0	ER8M / ER8	0.13
	K12-ER8M-150	P2780002	0.5 - 5.0	12	12	150	25.0	38.0	ER8M / ER8	0.17
	K12-ER8M-200	P2780003	0.5 - 5.0	12	12	200	25.0	38.0	ER8M / ER8	0.21
	K12-ER8M-250	P2780004	0.5 - 5.0	12	12	250	25.0	38.0	ER8M / ER8	0.26
	K12-ER8M-300	P2780005	0.5 - 5.0	12	12	300	25.0	38.0	ER8M / ER8	0.3
16	K16-ER11M-100	P2780006	0.5 - 7.0	16	16	100	32.0	29.5	ER11M / ER11	0.18
	K16-ER11M-140	P2772206	0.5 - 7.0	16	16	140	32.0	29.5	ER11M / ER11	0.23
	K16-ER11M-200	P2780007	0.5 - 7.0	16	16	200	32.0	29.5	ER11M / ER11	0.37
	K16-ER11M-250	P2780008	0.5 - 7.0	16	16	250	32.0	29.5	ER11M / ER11	0.45
	K16-ER11M-300	P2780009	0.5 - 7.0	16	16	300	32.0	29.5	ER11M / ER11	0.52
	K16-ER16M-100	P2780010	0.5 - 10.0	16	22	100	36.0	38.0	ER16M / ER16	0.18
20	K16-ER16M-140	P2780011	0.5 - 10.0	16	22	140	36.0	38.0	ER16M / ER16	0.23
	K16-ER16M-200	P2780012	0.5 - 10.0	16	22	200	36.0	38.0	ER16M / ER16	0.37
	K16-ER16M-250	P2780013	0.5 - 10.0	16	22	250	36.0	38.0	ER16M / ER16	0.45
	K16-ER16M-300	P2780014	0.5 - 10.0	16	22	300	36.0	38.0	ER16M / ER16	0.52
	K20-ER16M-100	P2780015	0.5 - 10.0	20	22	100	41.0	-	ER16M / ER16	0.22
	K20-ER16M-140	P2772207	0.5 - 10.0	20	22	140	41.0	-	ER16M / ER16	0.28
	K20-ER16M-200	P2780016	0.5 - 10.0	20	22	200	41.0	-	ER16M / ER16	0.54
	K20-ER16M-250	P2780017	0.5 - 10.0	20	22	250	41.0	-	ER16M / ER16	0.66
	K20-ER16M-300	P2780018	0.5 - 10.0	20	22	300	41.0	-	ER16M / ER16	0.78
	K20-ER20M-100	P2780019	0.5 - 13.0	20	28	100	41.0	41.5	ER20M / ER20	0.25
	K20-ER20M-140	P2772208	0.5 - 13.0	20	28	140	41.0	41.5	ER20M / ER20	0.32
	K20-ER20M-200	P2780020	0.5 - 13.0	20	28	200	41.0	41.5	ER20M / ER20	0.54
	K20-ER20M-250	P2780021	0.5 - 13.0	20	28	250	41.0	41.5	ER20M / ER20	0.66
	K20-ER20M-300	P2780022	0.5 - 13.0	20	28	300	41.0	41.5	ER20M / ER20	0.78

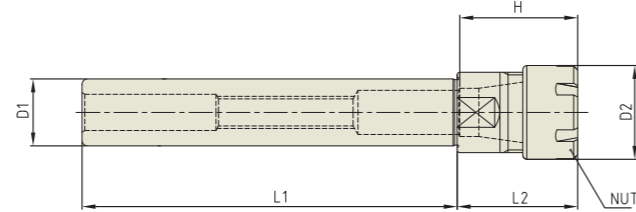
▶ For applicable ER collet, please refer to page D296~D304.
▶ For applicable ER nut, Sealing disk and Spanner, please refer to page D307 & D309.

▶ NEXT PAGE

EXTENSION ER COLLET CHUCK (SLIM)

VERLÄNGERUNG SPANN FUTTER (SCHLANK)
EXTENSION MANDRIN À PINCES (MINCE)
PROLUNGHE MANDRINO PORTA PINZE (SOTTILE)
EXTENSION PORTAPINZAS (DELGADO)

STRAIGHT-K



Unit : mm

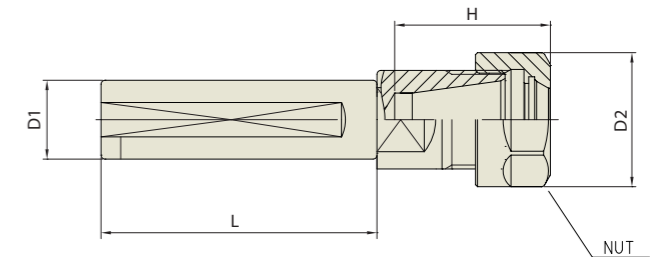
TAPER No.	MODEL No.	EDP No.	CLAMPING RANGE	D1	D2	L1	L2	H	NUT / COLLET	WEIGHT (Kg)
25	K25-ER16M-100	P2780023	0.5 - 10.0	25	22	100	41.0	-	ER16M / ER16	0.38
	K25-ER16M-140	P2772209	0.5 - 10.0	25	22	140	41.0	-	ER16M / ER16	0.50
	K25-ER16M-200	P2780024	0.5 - 10.0	25	22	200	41.0	-	ER16M / ER16	0.80
	K25-ER16M-250	P2780025	0.5 - 10.0	25	22	250	41.0	-	ER16M / ER16	1.00
	K25-ER16M-300	P2780026	0.5 - 10.0	25	22	300	41.0	-	ER16M / ER16	1.19
	K25-ER20M-140	P2772210	0.5 - 13.0	25	28	140	41.0	79.0	ER20M / ER20	0.52
	K25-ER20M-200	P2780027	0.5 - 13.0	25	28	200	41.0	79.0	ER20M / ER20	0.84
	K25-ER20M-250	P2780028	0.5 - 13.0	25	28	250	41.0	79.0	ER20M / ER20	1.03
	K25-ER20M-300	P2780029	0.5 - 13.0	25	28	300	41.0	79.0	ER20M / ER20	1.23
	K25-ER25M-140	P2772211	0.5 - 16.0	25	35	140	45.0	82.0	ER25M / ER25	0.50
	K25-ER25M-200	P2780030	0.5 - 16.0	25	35	200	45.0	82.0	ER25M / ER25	0.84
	K25-ER25M-250	P2780031	0.5 - 16.0	25	35	250	45.0	82.0	ER25M / ER25	1.04
	K25-ER25M-300	P2780032	0.5 - 16.0	25	35	300	45.0	82.0	ER25M / ER25	1.23
	32	K32-ER20M-150	P2780033	0.5 - 13.0	32	28	150	41.0	41.0	ER20M / ER20
K32-ER20M-200		P2780034	0.5 - 13.0	32	28	200	41.0	41.0	ER20M / ER20	1.31
K32-ER20M-250		P2780035	0.5 - 13.0	32	28	250	41.0	41.0	ER20M / ER20	1.62
K32-ER20M-300		P2780036	0.5 - 13.0	32	28	300	41.0	41.0	ER20M / ER20	1.94
K32-ER25M-150		P2780037	0.5 - 16.0	32	35	150	41.0	48.0	ER25M / ER25	1.01
K32-ER25M-200		P2780038	0.5 - 16.0	32	35	200	41.0	48.0	ER25M / ER25	1.32
K32-ER25M-250		P2780039	0.5 - 16.0	32	35	250	41.0	48.0	ER25M / ER25	1.64
K32-ER25M-300		P2780040	0.5 - 16.0	32	35	300	41.0	48.0	ER25M / ER25	1.95
K32-ER25M-350		P2780041	1.0 - 16.0	32	35	350	41.0	41.5	ER25M / ER25	2.27

- ▶ Inch type products are available.
- ▶ For applicable ER collet, please refer to page D296~D304.
- ▶ For applicable ER nut, Sealing disk and Spanner, please refer to page D307 & D309.

TENSION ER CHUCK (FOR TAPPING)

SPANNUNG SPANN FUTTER - ER - FÜR GEWINDESCHNEID
TENSION MANDRIN À PINCES - ER - POUR TARAUDER
TENSIONAMENTO MANDRINO PORTA PINZE - ER - PER MASCHIARE
TENSIÓN PORTAPINZAS - ER - PARA HILO

STRAIGHT-K



Unit : mm

TAPER No.	MODEL No.	EDP No.	CLAMPING RANGE	D1	D2	L	H	NUT / COLLET	WEIGHT (Kg)
20	K20-ERT16-70	P2772212	0.5 - 10.0	20	28	70	31.7	ER16	0.40
25	K25-ERT16-80	P2772213	0.5 - 10.0	25	28	80	31.7	ER16	0.45
	K25-ERT20-80	P2772214	0.5 - 13.0	25	34	80	35.5	ER20	0.50
32	K32-ERT16-80	P2772215	0.5 - 10.0	32	28	80	31.7	ER16	0.70
	K32-ERT20-80	P2772216	0.5 - 13.0	32	34	80	35.5	ER20	0.80
	K32-ERT25-80	P2772217	1.0 - 16.0	32	42	80	42	ER25	1.00
	K32-ERT32-80	P2772218	1.0 - 20.0	32	50	80	48	ER32	1.20

- ▶ Inch type products are available.
- ▶ For applicable ER collet, please refer to page D296~D304.
- ▶ For applicable ER nut, Sealing disk and Spanner, please refer to page D305~D309.

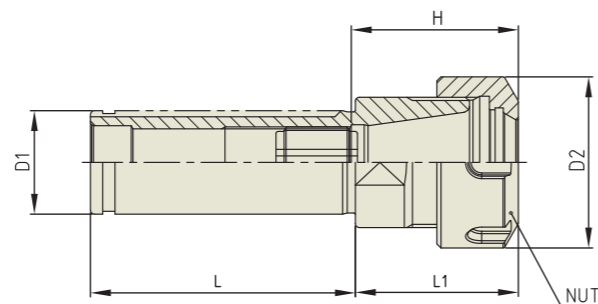
YG ER COLLET CHUCK

ER

ER COLLET CHUCK (NC-FOR CNC LATHE)

SPANN FUTTER - ER - FÜR CNC DREHBANK
 MANDRIN À PINCES - ER - POUR CNC TOUR
 MANDRINO PORTA PINZE - ER - PER CNC TORNIO
 PORTAPINZAS - ER - PARA CNC TORNO

STRAIGHT



Unit : mm

TAPER No.	MODEL No.	EDP No.	CLAMPING RANGE	D1	D2	L	L1	H	NUT / COLLET	WEIGHT (Kg)
25	NC25-ER11	P2772310	0.5 - 7.0	25	19	65	32	28.6	ER11	0.30
	NC25-ER16	P2772311	0.5 - 10.0	25	28	65	36	35.6	ER16	0.45
	NC25-ER20	P2772301	0.5 - 13.0	25	34	65	40	44.5	ER20	0.50
	NC25-ER25	P2772302	1.0 - 16.0	25	42	65	40	41	ER25	0.55
32	NC32-ER20	P2772303	0.5 - 13.0	32	34	60	39.5	44.5	ER20	0.60
	NC32-ER25	P2772304	1.0 - 16.0	32	42	70	40.0	41	ER25	0.70
	NC32-ER32	P2772305	1.0 - 20.0	32	50	70	45.0	47	ER32	0.75
40	NC40-ER32	P2772306	1.0 - 20.0	40	50	75	45.0	60	ER32	1.25
	NC40-ER40	P2772307	2.0 - 30.0	40	63	75	55.0	53	ER40	1.30

- ▶ Inch type products are available.
- ▶ For applicable ER collet, please refer to page D296~D304.
- ▶ For applicable ER nut, Sealing disk and Spanner, please refer to page D305~D309.

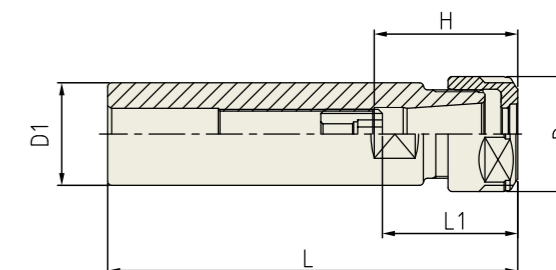
YG SK SLIM CHUCK

SKA

SK SLIM CHUCK

SK SCHLanke FUTTER
 MANDRIN TYPE SK MINCE
 SK MANDRINI SOTTILI
 PORTAHERRAMIENTAS SK EJE REDUCIDO

STRAIGHT-K



Unit : mm

TAPER No.	MODEL No.	EDP No.	CLAMPING RANGE	L	L1	D	D1	H	COLLET	WEIGHT (Kg)
20	K20-SKA06-100	P2773532	1.8 - 6.0	100	21 - 35	20	20	31	SKC6	0.20
	K20-SKA06-140	P2773533	1.8 - 6.0	140	21 - 35	20	20	31	SKC6	0.30
	K20-SKA10-100	P2773534	1.75 - 10.0	100	30 - 50	28	20	35	SKC10	0.20
	K20-SKA10-140	P2773535	1.75 - 10.0	140	30 - 50	28	20	35	SKC10	0.30
25	K25-SKA06-100	P2773536	1.8 - 6.0	100	21 - 35	20	25	31	SKC6	0.30
	K25-SKA06-140	P2773537	1.8 - 6.0	140	21 - 35	20	25	31	SKC6	0.50
	K25-SKA10-100	P2773538	1.75 - 10.0	100	30 - 50	28	25	35	SKC10	0.30
	K25-SKA10-150	P2773539	1.75 - 10.0	150	30 - 50	28	25	35	SKC10	0.50
	K25-SKA13-100	P2773540	2.75 - 13.0	100	31 - 65	33	25	43.6	SKC13	0.40
	K25-SKA13-150	P2773541	2.75 - 13.0	150	31 - 65	33	25	43.6	SKC13	0.60
32	K32-SKA10-100	P2773542	1.75 - 10.0	100	30 - 50	28	32	35	SKC10	0.50
	K32-SKA10-150	P2773543	1.75 - 10.0	150	30 - 50	28	32	35	SKC10	0.70
	K32-SKA13-100	P2773544	2.75 - 13.0	100	31 - 65	33	32	43.6	SKC13	1.00
	K32-SKA13-150	P2773545	2.75 - 13.0	150	31 - 65	33	32	43.6	SKC13	1.20
	K32-SKA16-100	P2773546	2.75 - 16.0	100	40 - 70	40	32	52	SKC16	1.00
	K32-SKA16-150	P2773547	2.75 - 16.0	150	40 - 70	40	32	52	SKC16	1.20
	K32-SKA20-100	P2773548	3.5 - 20.0	100	47 - 80	48.5	32	59.6	SKC20	1.10
	K32-SKA20-150	P2773549	3.5 - 20.0	150	47 - 80	48.5	32	59.6	SKC20	1.30

- ▶ Inch type products are available.
- ▶ For applicable Collet, Nut and Spanner, please refer to page D314~D317.

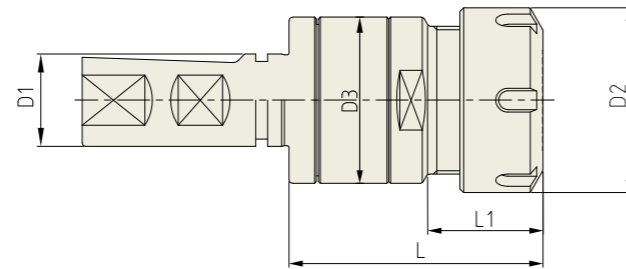
YIG SYNCHRO TAPPING CHUCK

SYTER

SYNCHRO TAPPING CHUCK (ER TYPE)

SYNCHRO GEWINDESCHNEIDFUTTER (ER)
SYNCHRO TARAUDER (ER)
SINCRO MANDRINI PER MASCHIATURA (ER)
SINCRO PORTAMACHOS (ER)

STRAIGHT-KW



Unit : mm

MODEL No.	EDP No.	TAP SIZE	NUT/ COLLET	D1	D2	D3	L	L1	Tension/ Compression	WEIGHT (Kg)
KW20-SYTER16	P2773901	M3-M16	ER20	20	34	34	58	26	±0.2	0.33
KW25-SYTER16	P2773902	M3-M16	ER20	25	34	34	61	27	±0.2	0.44
KW25-SYTER27	P2773903	M4-M27	ER32	25	50	45	69	31	±0.2	0.60

- Feature :
- Compensation for synchronization errors to extend tap life and to improve thread quality.
 - To compensate for pitch tolerances of taps.
 - For machine with synchronized spindle.
- Inch type products are available.
- ER collet of page D296~D302, and Tap ER collet of page D303~D304 are applicable.

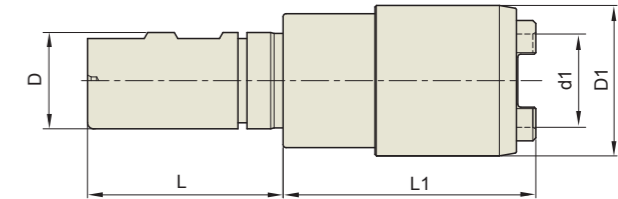
YIG SYNCHRO TAPPING CHUCK

SYTC

SYNCHRO TAPPING CHUCK (QUICK CHANGE TYPE)

SYNCHRO GEWINDESCHNEID-SCHNELLWECHSELFUTTER
SYNCHRO TARAUDER À CHANGEMENT RAPIDE
SINCRO MANDRINO PER MASCHIARE
SINCRO PORTAMACHOS DE CAMBIO RAPIDO

STRAIGHT-KW



Unit : mm

TAPER No.	MODEL No.	EDP No.	TAP SIZE	TAP ADAPTOR	D	d1	D1	L	L1	WEIGHT (Kg)
20	KW20-SYTC12-46	P2774401	M3-M12	TCS12	20	19	36	50	46	0.28
	KW20-SYTC12-107.5	P2774406	M3-M12	TCS12	20	19	36	50	107.5	0.65
25	KW25-SYTC12-46	P2774402	M3-M12	TCS12	25	19	36	56	46	0.37
	KW25-SYTC20-74	P2774403	M6-M24	TCS24	25	31	50	56	74	0.69
32	KW25-SYTC33-107.5	P2774404	M18-M38	TCS38	25	48	74	56	107.5	1.32
	KW32-SYTC12-74	P2774405	M3-M12	TCS12	32	31	50	60	74	0.71

- Feature :
- Compensation for synchronization errors to extend tap life and to improve thread quality.
 - To compensate for pitch tolerances of taps.
 - For machine with synchronized spindle.
- Inch type products are available.
- For applicable Tap Adaptor, please refer to page D318~D319.

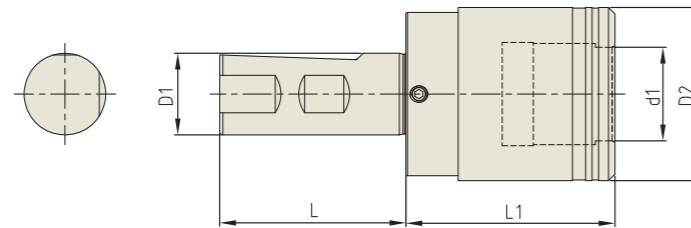
YIG ONE STEP TAPPING CHUCK

OTC

ONE STEP TAPPING CHUCK

GEWINDE-SCHNELLWECHSELFUTTER
 MANDRIN DE TARAUDAGE À CHANGEMENT RAPIDE
 PORTAMASCHI A CAMBIO RAPIDO
 MANDRINO DE CAMBIO RÁPIDO CON ROSCA

STRAIGHT-KW



Unit : mm

TAPER No.	MODEL No.	EDP No.	d1	D1	D2	L	L1	LENGTH COMPENSATION		WEIGHT (Kg)
								Compression	Tension	
20	KW20-OTC-M3-M12-40	P2802457	19	20	36	51	40	7.5	7.5	0.80
25	KW25-OTC-M3-M12-40	P2802458	19	25	36	57	40	7.5	7.5	3.00
	KW25-OTC-M8-M20-64	P2802459	31	25	53	57	64	12.5	12.5	3.30
32	KW32-OTC-M3-M12-39	P2802460	19	32	36	60	39	7.5	7.5	3.00
	KW32-OTC-M8-M20-63	P2802461	31	32	53	60.5	63	12.5	12.5	3.30
	KW32-OTC-M14-M36-124	P2802462	48	32	78	61	124	20	20	-

- ▶ Inch type products are available.
- ▶ For applicable Tap Adaptor, please refer to the page D318~D319.

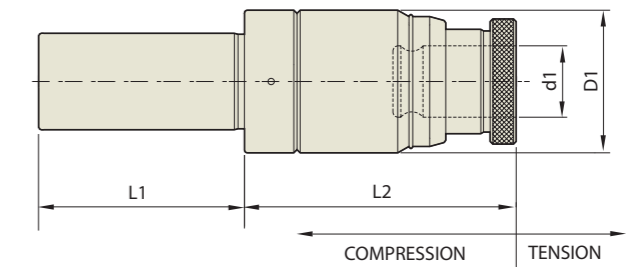
YIG TAPPING CHUCK

TC

TAPPING CHUCK

GEWINDESCHNEID-SCHNELLWECHSELFUTTER - GERADEAUS SCHAFT
 TARAUDER À CHANGEMENT RAPIDE - TOUT DROIT TIGE
 MANDRINO PER MASCHIARE - TIBIA DIRITTA
 PORTAMACHOS DE CAMBIO RAPIDO - CANA RECTA

STRAIGHT-K



Unit : mm

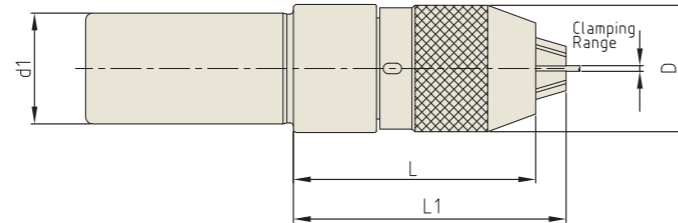
TAPER No.	MODEL No.	EDP No.	TAP SIZE	TAP ADAPTOR	LENGTH COMPENSATION		d1	D1	L1	L2	WEIGHT (Kg)
					Compression	Tension					
32	K32-TC12-100	P2774551	M3-M12	TCS12	5	15	19	45	60	100	0.90
	K32-TC24-120	P2774552	M6-M24	TCS24	5	20	31	63	60	120	1.40
42	K42-TC12-100	P2774553	M3-M12	TCS12	5	15	19	45	70	100	1.10
	K42-TC24-120	P2774554	M6-M24	TCS24	5	20	31	63	70	120	1.60

- ▶ Inch type products are available.
- ▶ For applicable Tap Adaptor, please refer to the page D318~D319.

NC DRILL CHUCK (KEYLESS TYPE)

NC - BOHRFUTTER
MANDRIN DE PERÇAGE NC
NC MANDRINI PORTA PUNTE
PORTABROCAS PARA BROCAS NC

STRAIGHT-K



Unit : mm

TAPER No.	MODEL No.	EDP No.	CLAMPING RANGE	D	d1	L (Min.)	L1 (Max.)	WEIGHT (Kg)
32	K32-NPU8-75	P2776021	0.3 - 8.0	36.5	32	75	80.7	0.70
	K32-NPU13-100	P2775252	0.3 - 13.0	50.4	32	100	110	1.50
42	K42-NPU8-70	P2775253	0.3 - 8.0	36.5	42	70	75.7	0.80
	K42-NPU13-100	P2775254	0.3 - 13.0	50.4	42	100	110	1.60

- ▶ Inch type products are available.
- ▶ Supplied with hook wrench. (Size NPU 8 : 8S, NPU 13 : 13S)

YG-1 TOOLING SYSTEM

**ISO, NT
MTA/MTB,
GOST**



- ISO** SHRINK FIT HOLDER
ER COLLET CHUCK
SK SLIM CHUCK
COMBI-SHELL MILL ARBOR
- NT** MORSE TAPER ARBOR
FACE MILL ARBOR
- MTA** ER COLLET CHUCK
POWER MILLING CHUCK
TAPPING CHUCK
FACE MILL ARBOR
- MTB** HYDRAULIC CHUCK
ER COLLET CHUCK
POWER MILLING CHUCK
- GOST** ER COLLET CHUCK
END MILL HOLDER
SHELL MILL ARBOR
MORSE TAPER ARBOR