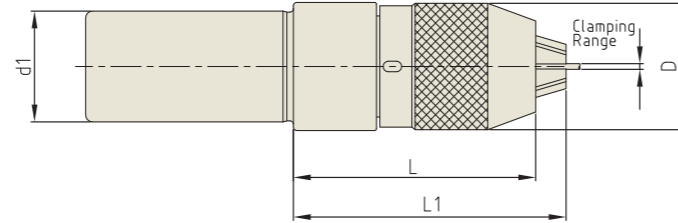


NC DRILL CHUCK (KEYLESS TYPE)

NC - BOHRFUTTER
 MANDRIN DE PERÇAGE NC
 NC MANDRINI PORTA PUNTE
 PORTABROCAS PARA BROCAS NC

STRAIGHT-K



Unit : mm

TAPER No.	MODEL No.	EDP No.	CLAMPING RANGE	D	d1	L (Min.)	L1 (Max.)	WEIGHT (Kg)
32	K32-NPU8-75	P2776021	0.3 - 8.0	36.5	32	75	80.7	0.70
	K32-NPU13-100	P2775252	0.3 - 13.0	50.4	32	100	110	1.50
42	K42-NPU8-70	P2775253	0.3 - 8.0	36.5	42	70	75.7	0.80
	K42-NPU13-100	P2775254	0.3 - 13.0	50.4	42	100	110	1.60

- ▶ Inch type products are available.
- ▶ Supplied with hook wrench. (Size NPU 8 : 8S, NPU 13 : 13S)

YG-1 TOOLING SYSTEM

**ISO, NT
 MTA/MTB,
 GOST**



- ISO** SHRINK FIT HOLDER
 ER COLLET CHUCK
 SK SLIM CHUCK
 COMBI-SHELL MILL ARBOR
- NT** MORSE TAPER ARBOR
 FACE MILL ARBOR
- MTA** ER COLLET CHUCK
 POWER MILLING CHUCK
 TAPPING CHUCK
 FACE MILL ARBOR
- MTB** HYDRAULIC CHUCK
 ER COLLET CHUCK
 POWER MILLING CHUCK
- GOST** ER COLLET CHUCK
 END MILL HOLDER
 SHELL MILL ARBOR
 MORSE TAPER ARBOR

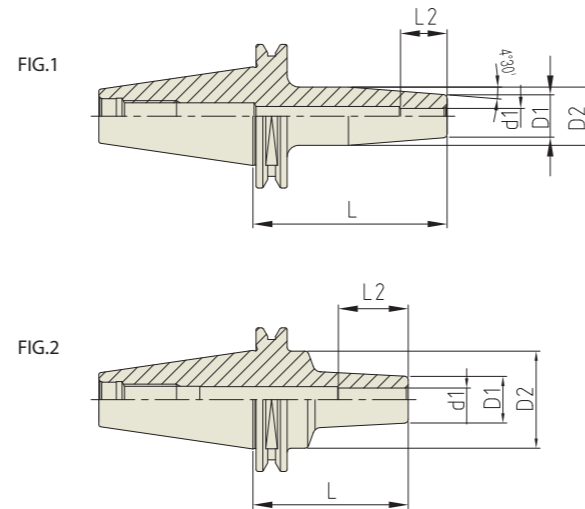
YIG SHRINK FIT HOLDER

SFH

SHRINK FIT HOLDER

SCHRUMPFUTTER
MANDRIN DE FRETAGE
MADRINI PER CALLETAMENTO A CALDO
PORTAHERRAMIENTAS DE COMPRESION POR CALOR

ISO 25



Unit : mm

TAPER No.	MODEL No.	EDP No.	d1	D1	D2	L	L2	FIG.	WEIGHT (Kg)
25	ISO25-SFH3-50	P2771651	3	11	15	50	10	1	-
	ISO25-SFH4-50	P2771652	4	11	15	50	12	1	-
	ISO25-SFH5-50	P2771653	5	11	15	50	15	1	-
	ISO25-SFH6-40	P2771654	6	12	25	40	18	2	-
	ISO25-SFH8-50	P2771655	8	14	18	50	30	1	-
	ISO25-SFH10-50	P2771656	10	16	20	50	37	1	-

- ▶ Inch type products are available.
- ▶ Higher balancing grade is available upon request.
- ▶ To be supplied with assembling of pull stud bolt.
- ▶ Balancing grade G2.5 at 25,000RPM or U max. < 1gmm.

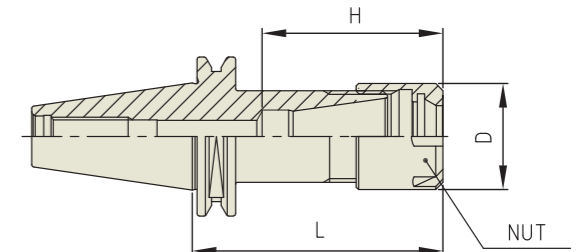
YIG ER COLLET CHUCK

ER

ER COLLET CHUCK (SLIM)

SPANN FUTTER-ER
MANDRIN À PINCES-ER
MANDRINO PORTA PINZE-ER
PORTAPINZAS-ER

ISO 20/25



Unit : mm

TAPER No.	MODEL No.	EDP No.	CLAMPING RANGE	L	D	H	NUT / COLLET	WEIGHT (Kg)
20	ISO20-ER16M-35	P2776541	0.5 - 10.0	35	22	37.5	ER16M / ER16	-
25	ISO25-ER16M-35	P2776542	0.5 - 10.0	35	22	37.5	ER16M / ER16	-
	ISO25-ER20M-36	P2776543	0.5 - 13.0	36	28	-	ER20M / ER20	-

- ▶ Higher balancing grade is available upon request.
- ▶ To be supplied with assembling of pull stud bolt.
- ▶ Balancing grade G2.5 at 25,000RPM or U max. < 1gmm.
- ▶ For applicable ER collet, please refer to page D296~D304.
- ▶ For applicable ER nut, Sealing disk and Spanner, please refer to page D307 & D309.

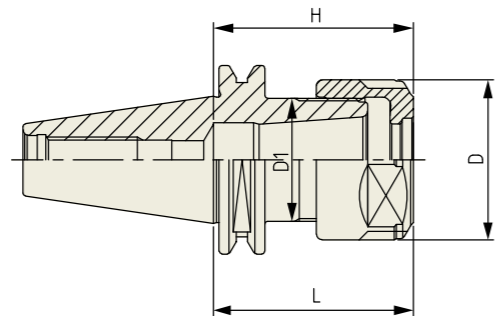


SKA

SK SLIM CHUCK

SK SCHLANKE FUTTER
MANDRIN TYPE SK MINCE
SK MANDRINI SOTTILI
PORTAHERRAMIENTAS SK EJE REDUCIDO

ISO 20/25



Unit : mm									
TAPER No.	MODEL No.	EDP No.	CLAMPING RANGE	L	D	D1	H	COLLET	WEIGHT (Kg)
20	ISO20-SKA10-35	P2773530	1.75 - 10.0	35	33	21.5	35	SKC10	0.50
25	ISO25-SKA10-35	P2773531	1.75 - 10.0	35	33	21.5	35	SKC10	0.70

- Higher balancing grade is available upon request.
- To be supplied with assembling of pull stud bolt.
- Balancing grade G2.5 at 25,000RPM or U max. < 1gmm.
- For applicable Collet, Nut and Spanner, please refer to page D315~D317.

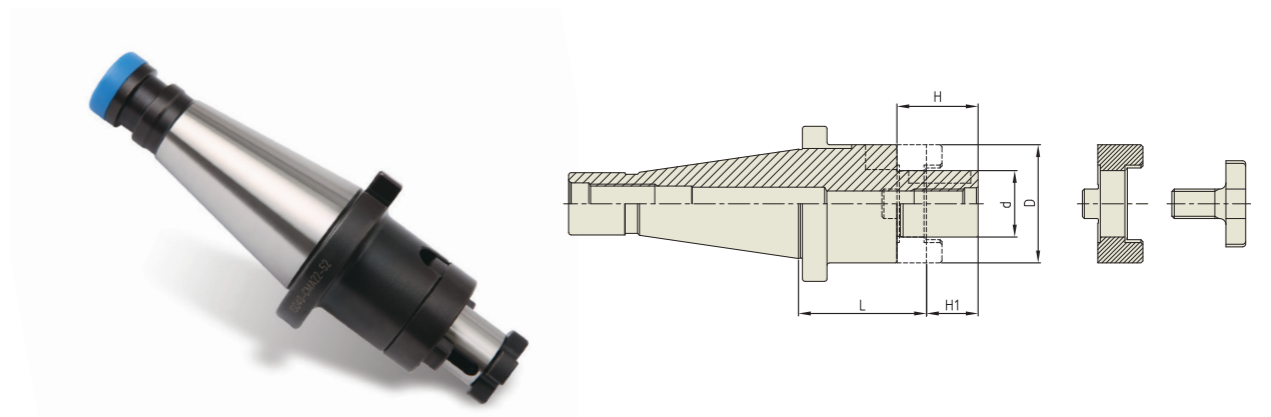


CMA

COMBI-SHELL MILL ARBOR

KOMBI-AUFNAHMEDORN FÜR FRÄSER MIT BOHRUNG
MANDRIN PORTE-FRAISES COMBINÉS
MANDRINO PORTA FRESE
PORTA FRESAS COMBINADO

DIN 2080 - ISO



Unit : mm								
TAPER No.	MODEL No.	EDP No.	d	L	D	H1	H	WEIGHT (Kg)
30	ISO30-CMA16-35	P2514001	16	35	32	17	27	0.52
	ISO30-CMA22-35	P2514002	22	35	40	19	31	0.63
	ISO30-CMA27-35	P2514003	27	35	48	21	33	0.72
40	ISO40-CMA16-52	P2514004	16	52	32	17	27	0.99
	ISO40-CMA16-125	P2514015	16	125	32	17	27	1.41
	ISO40-CMA22-52	P2514005	22	52	40	19	31	1.15
	ISO40-CMA22-125	P2514016	22	125	40	19	31	1.78
	ISO40-CMA27-52	P2514006	27	52	48	21	33	1.37
	ISO40-CMA27-125	P2514017	27	125	48	21	33	2.35
	ISO40-CMA32-52	P2514007	32	52	58	24	38	1.65
	ISO40-CMA32-125	P2514018	32	125	58	24	38	3.07
	ISO40-CMA40-52	P2514008	40	52	70	27	41	1.94
50	ISO50-CMA16-55	P2514009	16	55	32	17	27	2.79
	ISO50-CMA16-125	P2514019	16	125	32	17	27	3.21
	ISO50-CMA22-55	P2514010	22	55	40	19	31	2.95
	ISO50-CMA22-125	P2514020	22	125	40	19	31	3.6
	ISO50-CMA27-55	P2514011	27	55	48	21	33	3.17
	ISO50-CMA27-125	P2514021	27	125	48	21	33	4.11
	ISO50-CMA32-55	P2514012	32	55	58	24	38	3.49
	ISO50-CMA32-125	P2514022	32	125	58	24	38	4.85
	ISO50-CMA40-55	P2514013	40	55	70	27	41	3.85
	ISO50-CMA40-125	P2514023	40	125	70	27	41	5.26
	ISO50-CMA50-55	P2514014	50	55	90	30	46	4.88

- Inch type products are available.
- For parts, please refer to page D312.

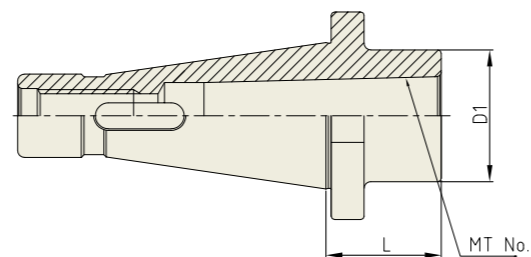
YIG MORSE TAPER ARBOR

MTA

MORSE TAPER ARBOR

EINSATZHÜLSEN FÜR MORSEKEGEL
DOUILLES DE RÉDUCTION CÔNE MORSE
MANDRINO RIDUZIONE CONO MORSE
REDUCTORES A MORSE

ANSI B5.18-NT



Unit : mm

TAPER No.	MODEL No.	EDP No.	MT No.	RANGE OF DRILL		D1	L	DRAW THREAD	WEIGHT (Kg)
				Min.	Max.				
40	NT40-MTA1-30	P2542051	1	2.0	14.0	25	30	U5/8-11(M16x2)	0.90
	NT40-MTA2-30	P2542052	2	14.1	23.0	32	30	U5/8-11(M16x2)	1.00
	NT40-MTA3-35	P2542053	3	23.1	32.0	40	35	U5/8-11(M16x2)	1.00
	NT40-MTA4-90	P2542054	4	32.1	50.0	50	90	U5/8-11(M16x2)	1.20
50	NT50-MTA1-30	P2542055	1	2.0	14.0	25	30	U1-8(M24x3)	3.50
	NT50-MTA2-30	P2542056	2	14.1	23.0	32	30	U1-8(M24x3)	3.50
	NT50-MTA3-30	P2542057	3	23.1	32.0	40	30	U1-8(M24x3)	3.50
	NT50-MTA4-45	P2542058	4	32.1	50.0	50	45	U1-8(M24x3)	3.50
	NT50-MTA5-105	P2542059	5	50.1	75.0	60	105	U1-8(M24x3)	4.00

▶ Inch type products are available.

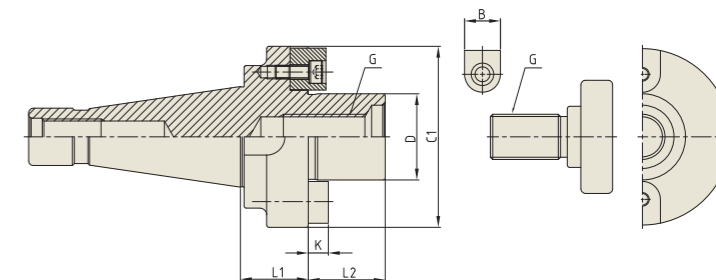
YIG FACE MILL ARBOR

FMA

FACE MILL ARBOR

AUFNAHMEDORN FÜR MESSERKÖPFE
ARBRE PORTE FRAISE À ALÉSAGE
MANDRINO PORTA FRESE FRONTALE
EJE PARA PLATOS DE PLACAS

ANSI B5.18-NT



Unit : mm

TAPER No.	MODEL No.	EDP No.	CUTTER (Φ)	D	C1	L1	L2	B	K	G	DRAW THREAD	WEIGHT (kg)
40	NT40-FMA25.4-30	P2779251	3"(75)	25.4	50	30	22	9.52	4.8	M12	U5/8-11(M16x2)	1.45
	NT40-FMA31.75-30	P2779252	4"(100)	31.75	60	30	30	12.7	6.35	M16	U5/8-11(M16x2)	1.75
	NT40-FMA38.1-30	P2779253	5"(125)	38.1	80	30	34	15.87	7.8	M20	U5/8-11(M16x2)	1.93
	NT40-FMA50.8-30	P2779254	6"(150)	50.8	97.5	30	36	19.05	10.0	M24	U5/8-11(M16x2)	2.55
50	NT50-FMA25.4-30	P2779255	3"(75)	25.4	50	30	22	9.52	4.8	M12	U1-8(M24x3)	3.30
	NT50-FMA25.4-100	P2779317	3"(75)	25.4	50	100	22	9.52	4.8	M12	U1-8(M24x3)	4.38
	NT50-FMA25.4-150	P2779318	3"(75)	25.4	50	150	22	9.52	4.8	M12	U1-8(M24x3)	5.15
	NT50-FMA31.75-30	P2779256	4"(100)	31.75	60	30	30	12.7	6.35	M16	U1-8(M24x3)	3.40
	NT50-FMA31.75-100	P2779319	4"(100)	31.75	60	100	30	12.7	6.35	M16	U1-8(M24x3)	3.95
	NT50-FMA31.75-150	P2779320	4"(100)	31.75	60	150	30	12.7	6.35	M16	U1-8(M24x3)	6.06
	NT50-FMA38.1-30	P2779257	5"(125)	38.1	80	30	34	15.87	7.8	M20	U1-8(M24x3)	3.60
	NT50-FMA38.1-100	P2779321	5"(125)	38.1	80	100	34	15.87	7.8	M20	U1-8(M24x3)	6.36
	NT50-FMA38.1-150	P2779322	5"(125)	38.1	80	150	34	15.87	7.8	M20	U1-8(M24x3)	8.33
	NT50-FMA50.8-30	P2779258	6"(150)	50.8	97.5	30	36	19.05	10.0	M24	U1-8(M24x3)	3.90
	NT50-FMA50.8-100	P2779323	6"(150)	50.8	97.5	100	36	19.05	10.0	M24	U1-8(M24x3)	8.00
	NT50-FMA50.8-150	P2779324	6"(150)	50.8	97.5	150	36	19.05	10.0	M24	U1-8(M24x3)	10.93
NT50-FMA47.625	P2779259		8"(200)	47.625	128.57	45	38	-	-	-	U1-8(M24x3)	4.90

▶ Without "Coolant Through".

▶ For parts, please refer to page D313.

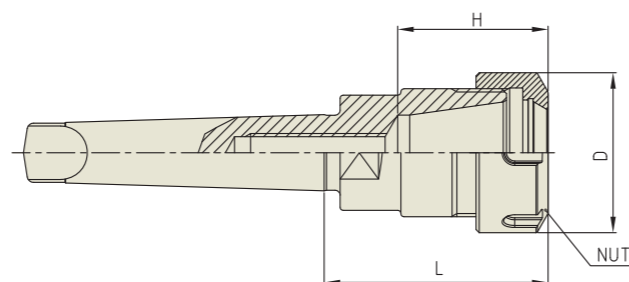
YG ER COLLET CHUCK

ER

ER COLLET CHUCK (STANDARD)

SPANN FUTTER - ER
MANDRIN À PINCES - ER
MANDRINO PORTA PINZE - ER
PORTAPINZAS - ER

DIN 228-MTA



Unit : mm

TAPER No.	MODEL No.	EDP No.	CLAMPING RANGE	L	D	H	NUT / COLLET	WEIGHT (Kg)
1	MTA1-ER11	P2772241	0.5 - 7.0	42.1	19	28.6	ER11	0.30
	MTA1-ER16	P2772242	0.5 - 10.0	43.9	28	36.6	ER16	0.35
2	MTA2-ER20	P2772243	0.5 - 13.0	50	34	40.5	ER20	0.50
	MTA2-ER25	P2772244	1.0 - 16.0	50	42	41	ER25	0.60
3	MTA3-ER25	P2772245	1.0 - 16.0	60	42	52	ER25	0.60
	MTA3-ER32	P2772246	1.0 - 20.0	70	50	47	ER32	0.65
4	MTA4-ER20	P2772247	0.5 - 13.0	60	34	50	ER20	1.00
	MTA4-ER25	P2772248	1.0 - 16.0	60	42	52	ER25	1.10
	MTA4-ER32	P2772249	1.0 - 20.0	65	50	48	ER32	1.30
	MTA4-ER40	P2772250	2.0 - 30.0	80	63	69	ER40	1.50
5	MTA5-ER32	P2772251	1.0 - 20.0	70	50	60	ER32	2.20
	MTA5-ER40	P2772252	2.0 - 30.0	80	63	69	ER40	2.40
	MTA5-ER50	P2772253	4.0 - 34.0	80	78	69	ER50	2.80

- ▶ For applicable ER collet, please refer to page D296~D304.
- ▶ For applicable ER nut, Sealing disk and Spanner, please refer to page D305~D309.

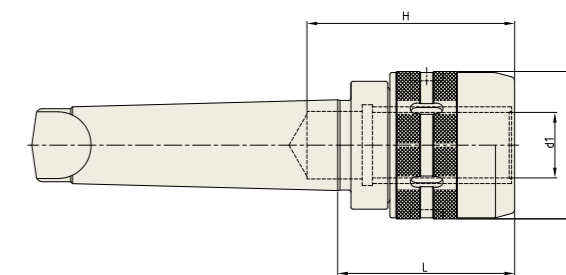
YG POWER MILLING CHUCK

C

POWER MILLING CHUCK

FRÄSERSPANNFUTTER
MANDRIN PORTE FRAISE
MANDRINI PORTA FRESA
PORTAHERRAMIENTAS PARA FRESADO

DIN 228-MTA



Unit : mm

TAPER No.	MODEL No.	EDP No.	d1	D1	L	H	WEIGHT (Kg)
4	MTA4-C32	P2546122	32	72	98	85	2.57
5	MTA5-C32	P2546123	32	72	85	100	3.06
	MTA5-C42	P2546124	42	92	114	100	3.45
6	MTA6-C42	P2546125	42	92	99	110	4.14

- ▶ Inch type products are available.
- ▶ In the case of MT6, it is required to inform machine model number and company name for selection of cutter groove.
- ▶ For applicable collet and spanner, please refer to the page D314.

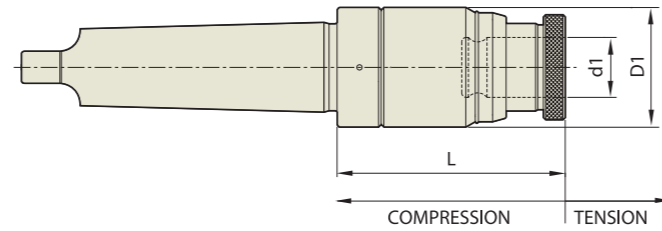


TC

TAPPING CHUCK

GEWINDESCHNEID-SCHNELLWECHSELFUTTER - GERADEAUS SCHAFT
 TARAUDER À CHANGEMENT RAPIDE - TOUT DROIT TIGE
 MANDRINO PER MASCHIARE - TIBIA DIRITTA
 PORTAMACHOS DE CAMBIO RAPIDO - CANA RECTA

DIN 228-MTA



Unit : mm

TAPER No.	MODEL No.	EDP No.	TAP SIZE	TAP ADAPTOR	LENGTH COMPENSATION		d1	D1	L	WEIGHT (Kg)
					Compression	Tension				
3	MTA3-TC12-90	P2774555	M3-M12	TCS12	5	15	19	45	90	1.00
	MTA3-TC24-115	P2774556	M6-M24	TCS24	5	20	31	63	115	2.00
4	MTA4-TC12-105	P2774557	M3-M12	TCS12	5	15	19	45	105	1.50
	MTA4-TC24-115	P2774558	M6-M24	TCS24	5	20	31	63	115	2.20
5	MTA5-TC12-145	P2540003	M3-M12	TCS12	5	15	19	45	145	1.50
	MTA5-TC24-175	P2778407	M6-M24	TCS24	5	20	31	63	175	2.60

► For applicable Tap Adaptor, please refer to page D318~D319.

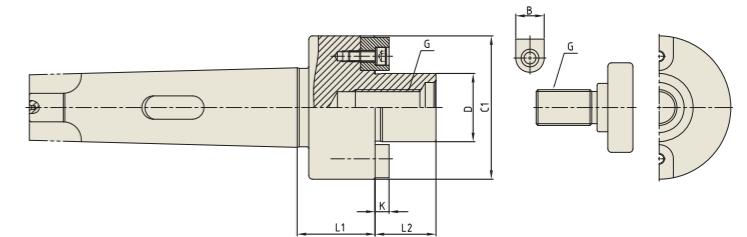
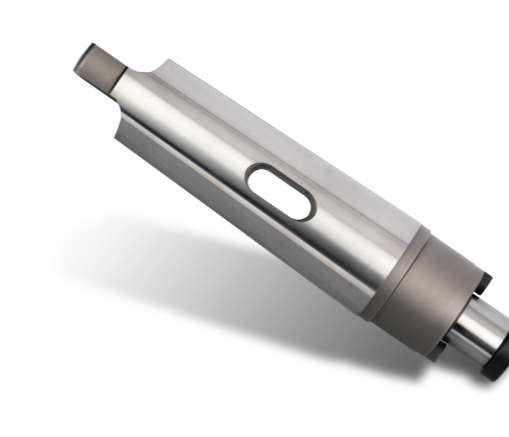


FMA

FACE MILL ARBOR

AUFNAHMEDORN FÜR MESSERKÖPFE
 ARBRE PORTE FRAISE À ALÉSAGE
 MANDRINO PORTA FRESE FRONTALE
 EJE PARA PLATOS DE PLACAS

DIN 228-MTA



Unit : mm

TAPER No.	MODEL No.	EDP No.	CUTTER (Φ)	D	C1	L1	L2	B	K	G	WEIGHT (kg)
5	MTA5-FMA25.4	P2779260	3"(75)	25.4	50	43.5	22	9.52	4.8	M12	1.60
	MTA5-FMA31.75	P2779261	4"(100)	31.75	60	43.5	30	12.7	6.35	M16	1.90
	MTA5-FMA38.1	P2779262	5"(125)	38.1	80	43.5	34	15.87	7.8	M20	2.20
6	MTA6-FMA25.4	P2779263	3"(75)	25.4	50	45	22	9.52	4.8	M12	3.50
	MTA6-FMA31.75	P2779264	4"(100)	31.75	60	45	30	12.7	6.35	M16	3.80
	MTA6-FMA38.1	P2779265	5"(125)	38.1	80	45	34	15.87	7.8	M20	4.10
	MTA6-FMA50.8	P2779266	6"(150)	50.8	100	45	36	19.05	10.0	M24	4.60
	MTA6-FMA47.625	P2779267	8"(200)	47.625	128.57	48	38	-	-	-	5.40

► Without "Coolant Through".

► For parts, please refer to page D313.

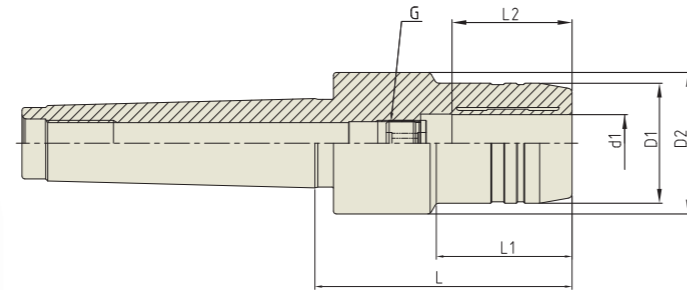
YG HYDRAULIC CHUCK

HC

HYDRAULIC CHUCK

HYDRAULIK SPANNFUTTER FÜR DEN FORMENBAU
 MANDRIN HYDRAULIQUE POUR MOULISTE
 MANDRINI IDRAULICI PER STAMPAGGIO
 PORTAHERRAMIENTAS HIDRAULICO PARA MOLDES

DIN 228-MTB



Unit : mm

TAPER No.	MODEL No.	EDP No.	d1	D1	D2	L	L1	L2	G	WEIGHT (Kg)
4	MTB4-HC20-90	P2770961	20	42	49.5	90	47.5	42	M16×1.0	1.30
	MTB4-HC32-90	P2770962	32	72	72	90	-	55	-	1.40
5	MTB5-HC20-90	P2770963	20	42	49.5	90	47.5	42	M16×1.0	2.20
	MTB5-HC32-90	P2770964	32	72	72	90	-	55	M16×1.0	2.40

- ▶ Inch type products are available.
- ▶ T.I.R shall be controlled by less than 0.008mm at 3D.
- ▶ Supplied with clamping T-wrench.
- ▶ For applicable Hydraulic Chuck collet, please refer to page D291~D294.

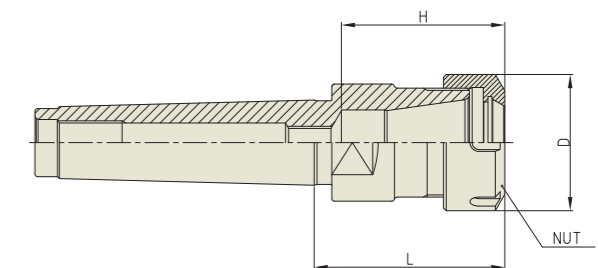
YG ER COLLET CHUCK

ER

ER COLLET CHUCK

SPANN FUTTER - ER
 MANDRIN À PINCES - ER
 MANDRINO PORTA PINZE - ER
 PORTAPINZAS - ER

DIN 228-MTB



Unit : mm

TAPER No.	MODEL No.	EDP No.	CLAMPING RANGE	L	D	H	NUT / COLLET	WEIGHT (Kg)
1	MTB1-ER16	P2772254	0.5 - 10.0	43.9	28	36.6	ER16	0.35
2	MTB2-ER20	P2772255	0.5 - 13.0	50	34	40.5	ER20	0.50
	MTB2-ER25	P2772256	1.0 - 16.0	50	42	41	ER25	0.60
3	MTB3-ER25	P2772257	1.0 - 16.0	60	42	52	ER25	0.60
	MTB3-ER32	P2772258	1.0 - 20.0	70	50	47	ER32	0.65
4	MTB4-ER32	P2772259	1.0 - 20.0	65	50	48	ER32	1.10
	MTB4-ER40	P2772260	2.0 - 30.0	80	63	69	ER40	1.30
5	MTB5-ER32	P2772261	1.0 - 20.0	70	50	60	ER32	2.00
	MTB5-ER40	P2772262	2.0 - 30.0	80	63	69	ER40	2.20
	MTB5-ER50	P2772263	4.0 - 34.0	80	78	69	ER50	2.60

- ▶ For applicable ER collet, please refer to page D296~D304.
- ▶ For applicable ER nut, Sealing disk and Spanner, please refer to page D305~D309.

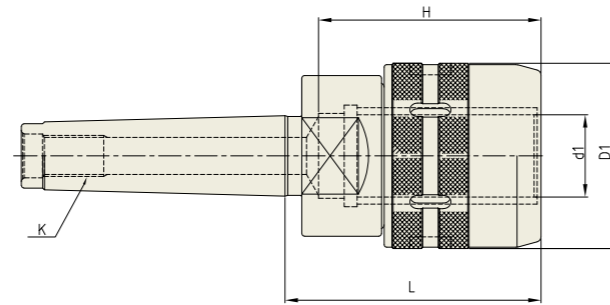
YG POWER MILLING CHUCK

C

POWER MILLING CHUCK

FRÄSERSPANNFUTTER
MANDRIN PORTE FRAISE
MANDRINI PORTA FRESA
PORTAHERRAMIENTAS PARA FRESADO

DIN 228-MTB



Unit : mm

TAPER No.	MODEL No.	EDP No.	d1	D1	L	H	K	WEIGHT (Kg)
3	MTB3-C20	P2546126	20	54	74	65	M12	2.10
4	MTB4-C32	P2546127	32	72	98	80	M16	2.57
5	MTB5-C32	P2546128	32	72	85	100	M20	3.06
	MTB5-C42	P2546129	42	92	114	100	M20	3.45

- ▶ Inch type products are available.
- ▶ In the case of MT6, it is required to inform machine model number and company name for selection of cutter groove.
- ▶ For applicable collet and spanner, please refer to the page D314.

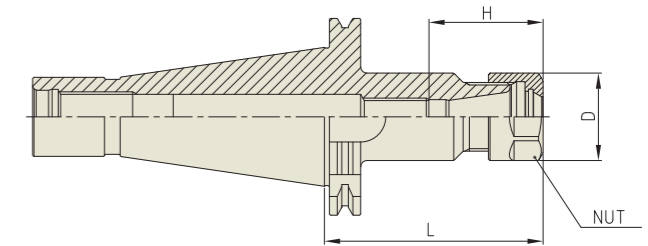
YG ER COLLET CHUCK

ER

ER COLLET CHUCK

SPANN FUTTER-ER
MANDRIN À PINCES-ER
MANDRINO PORTA PINZE-ER
PORTAPINZAS-ER

GOST 40/50



Unit : mm

TAPER No.	MODEL No.	EDP No.	CLAMPING RANGE	D	L	H	NUT / COLLET	WEIGHT (Kg)
40	GOST40-ER16-70	P2780101	0.5 - 10.0	28	70	45	ER16	-
	GOST40-ER16-100	P2780102	0.5 - 10.0	28	100	45	ER16	-
	GOST40-ER25-70	P2780103	1.0 - 16.0	42	70	65	ER25	-
	GOST40-ER25-100	P2780104	1.0 - 16.0	42	100	65	ER25	-
	GOST40-ER32-70	P2780105	1.0 - 20.0	50	70	65	ER32	-
	GOST40-ER32-100	P2780106	1.0 - 20.0	50	100	65	ER32	-
50	GOST50-ER16-90	P2780107	0.5 - 10.0	28	90	45	ER16	-
	GOST50-ER16-150	P2780108	0.5 - 10.0	28	150	45	ER16	-
	GOST50-ER25-90	P2780109	1.0 - 16.0	42	90	65	ER25	-
	GOST50-ER25-150	P2780110	1.0 - 16.0	42	150	65	ER25	-
	GOST50-ER32-90	P2780111	1.0 - 20.0	50	90	65	ER32	-
	GOST50-ER32-150	P2780112	1.0 - 20.0	50	150	65	ER32	-
	GOST50-ER40-90	P2780113	2.0 - 30.0	63	90	65	ER40	-

- ▶ For applicable ER collet, please refer to page D296~D304.
- ▶ For applicable ER nut, Sealing disk and Spanner, please refer to page D305~D309.

SK (DIN 69871)
CBT (BT DUAL CONTACT)
BT (JIS B6339/MAS 403)
HSK (DIN 69893/ISO 12164)
STRAIGHT
ISO, NT, MTA/MTB, GOST
TOOL HOLDER SET
BORING SYSTEM
ACCESSORY & PARTS

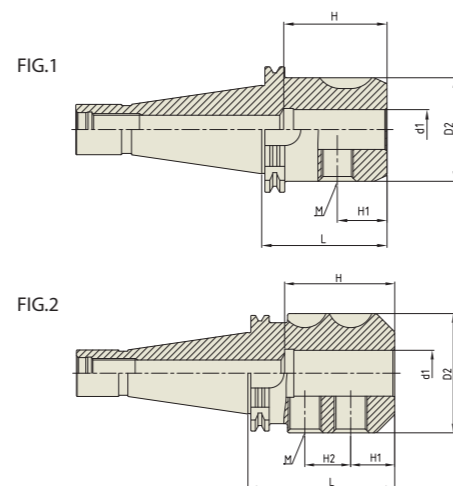
YG END MILL HOLDER

EMH

END MILL HOLDER

FRÄSERFUTTER UND FLÄCHENSPANNFUTTER
MANDRIN PORTE FRAISE À QUEUE CYLINDRIQUE, À MÉPLAT
MANDRINI PORTA FRESA TIPO WELDON
PORTAFRESAS Y EJES DE SUJECCION LATERAL

GOST 40/50



Unit : mm

TAPER No.	MODEL No.	EDP No.	d1	D2	L	H	H1	H2	M	FIG.	WEIGHT (Kg)
40	GOST40-EMH6-50	P2780361	6	25	50	35	18	-	M6	1	-
	GOST40-EMH8-50	P2780362	8	28	50	35	18	-	M8	1	-
	GOST40-EMH10-50	P2780363	10	35	50	35.5	20	-	M10	1	-
	GOST40-EMH12-50	P2780364	12	42	50	36	22.5	-	M12	1	-
	GOST40-EMH14-63	P2780365	14	44	63	36	22.5	-	M12	1	-
	GOST40-EMH16-63	P2780366	16	48	63	46	24	-	M14	1	-
	GOST40-EMH18-63	P2780367	18	50	63	46	24	-	M14	1	-
	GOST40-EMH20-63	P2780368	20	52	63	48	25	-	M16	1	-
	GOST40-EMH25-80	P2780369	25	65	80	55	24	25	M18	2	-
	GOST40-EMH32-80	P2780370	32	72	80	57	24	28	M20	2	-
50	GOST50-EMH6-63	P2780371	6	25	63	35	18	-	M6	1	-
	GOST50-EMH8-63	P2780372	8	28	63	35	18	-	M8	1	-
	GOST50-EMH10-63	P2780373	10	35	63	35.5	20	-	M10	1	-
	GOST50-EMH12-63	P2780374	12	42	63	36	22.5	-	M12	1	-
	GOST50-EMH14-63	P2780375	14	44	63	36	22.5	-	M12	1	-
	GOST50-EMH16-63	P2780376	16	48	63	46	24	-	M14	1	-
	GOST50-EMH18-63	P2780377	18	50	63	46	24	-	M14	1	-
	GOST50-EMH20-63	P2780378	20	52	63	48	25	-	M16	1	-
	GOST50-EMH25-80	P2780379	25	65	80	55	24	25	M18	2	-
	GOST50-EMH32-80	P2780380	32	72	80	63	24	28	M20	2	-
GOST50-EMH40-90	P2780381	40	80	90	68	30	32	M20	2	-	

- ▶ Inch type products are available.
- ▶ Standard End Mill Holder is for a cutting tool with weldon shank and End Mill Holder for a cutting tool with Whistle notch is available upon request.
- ▶ Combi-style Holder with ball jointed clamping screw which can be used with cutting tools with Weldon and Whistle notch shank is available.

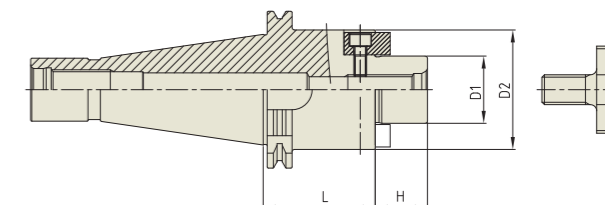
YG SHELL MILL ARBOR

SMA

SHELL MILL ARBOR

AUFNAHMEDORN FÜR FRÄSER MIT BOHRUNG
MANDRIN PORTE-FRAISES
MANDRINO CON TRASCINAMENTO FISSO
PORTA FRESAS

GOST 40/50



Unit : mm

TAPER No.	MODEL No.	EDP No.	D1	D2	L	H	BOLT	WEIGHT (Kg)
40	GOST40-SMA16-40	P2780401	16	32	40	17	M8x16L	-
	GOST40-SMA16-100	P2780402	16	32	100	17	M8x16L	-
	GOST40-SMA22-40	P2780403	22	40	40	19	M10x18L	-
	GOST40-SMA22-100	P2780404	22	40	100	19	M10x18L	-
	GOST40-SMA27-45	P2780405	27	48	45	21	M12x22L	-
	GOST40-SMA32-45	P2780406	32	58	45	24	M16x26L	-
	50	GOST50-SMA16-40	P2780407	16	32	40	17	M8x16L
GOST50-SMA16-100		P2780408	16	32	100	17	M8x16L	-
GOST50-SMA22-40		P2780409	22	40	40	19	M10x18L	-
GOST50-SMA22-100		P2780410	22	40	100	19	M10x18L	-
GOST50-SMA27-45		P2780411	27	48	45	21	M12x22L	-
GOST50-SMA27-120		P2780412	27	48	120	21	M12x22L	-
GOST50-SMA32-45		P2780413	32	58	45	24	M16x26L	-
GOST50-SMA32-130		P2780414	32	58	130	24	M16x26L	-
GOST50-SMA40-55		P2780415	40	70	55	27	M20x30L	-
GOST50-SMA40-150		P2780416	40	70	150	27	M20x30L	-
GOST50-SMA50-60	P2780417	50	90	60	30	M24x36L	-	

▶ For parts, please refer to page D311.