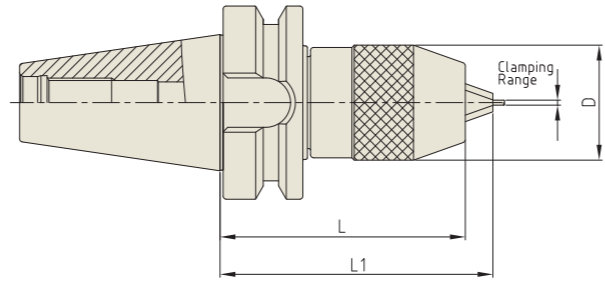


NC DRILL CHUCK (KEYLESS TYPE)

NC - BOHRFUTTER
 MANDRIN DE PERÇAGE NC
 NC MANDRINI PORTA PUNTE
 PORTABROCAS PARA BROCAS NC



Unit : mm

TAPER No.	MODEL No.	EDP No.	CLAMPING RANGE	D	L (Min.)	L1 (Max.)	WEIGHT (Kg)
30	CBT30-NPU8-75	P2776066	0.3 - 8.0	36.5	75	80.7	0.80
	CBT30-NPU13-105	P2776067	1.0 - 13.0	50.4	105	115	1.80
40	CBT40-NPU8-80	P2776068	0.3 - 8.0	36.5	80	85.7	1.50
	CBT40-NPU8-110	P2776054	0.3 - 8.0	36.5	110	115.7	1.80
	CBT40-NPU8-150	P2776055	0.3 - 8.0	36.5	150	155.7	2.60
	CBT40-NPU13-95	P2776069	1.0 - 13.0	50.4	95	105	2.10
	CBT40-NPU13-130	P2776057	1.0 - 13.0	50.4	130	140	2.70
	CBT40-NPU13-150	P2776058	1.0 - 13.0	50.4	150	160	3.40
50	CBT50-NPU8-90	P2776059	0.3 - 8.0	36.5	90	95.7	4.20
	CBT50-NPU8-110	P2776060	0.3 - 8.0	36.5	110	115.7	4.50
	CBT50-NPU8-170	P2776061	0.3 - 8.0	36.5	170	175.7	5.20
	CBT50-NPU13-105	P2776070	1.0 - 13.0	50.4	105	115	4.80
	CBT50-NPU13-130	P2776063	1.0 - 13.0	50.4	130	140	5.20
	CBT50-NPU13-150	P2776064	1.0 - 13.0	50.4	150	160	5.50
	CBT50-NPU13-190	P2776065	1.0 - 13.0	50.4	190	200	5.90

► Supplied with hook wrench. (Size NPU 8 : 8S, NPU 13 : 13S)

YG-1 TOOLING SYSTEM

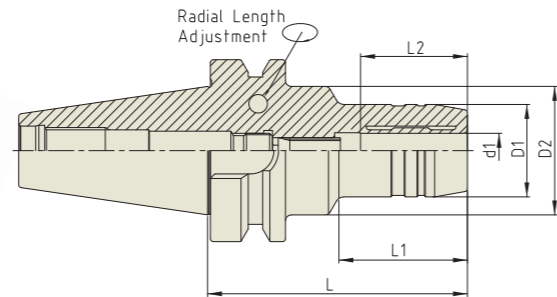
BT
(JIS B6339/MAS 403)



- HYDRAULIC CHUCK
- SHRINK FIT HOLDER
- ER COLLET CHUCK
- END MILL HOLDER (SIDE LOCK ARBOR)
- SHELL MILL ARBOR
- COMBI-SHELL MILL ARBOR
- POWER MILLING CHUCK
- MORSE TAPER ARBOR
- SK SLIM CHUCK
- SYNCHRO TAPPING CHUCK
- ONE STEP TAPPING CHUCK
- TAPPING ER CHUCK
- TAPPING CHUCK
- FACE MILL ARBOR
- COPY MILL ARBOR
- INDEXABLE DRILL HOLDER
- NC DRILL CHUCK
- SIDE CUTTER ARBOR
- JACOBS TAPER ARBOR
- BLANK BAR
- TEST BAR

HYDRAULIC CHUCK (RADIAL TOOL LENGTH PRE-SETTING TYPE)

HYDRAULIK SPANNFUTTER (RADIALE WERKZEUGLÄGEN VOREINSTELLUNG)
 MANDRIN HYDRAULIQUE (BANC DE PRÉ-RÉGLAGE RADIAL)
 MANDRINI IDRAULICI (UTENSILI RADIALI PER AZZERAMENTO)
 PORTAHERRAMIENTAS HIDRAULICO (AJUSTE DE LONGITUD TIPO PRE-SETTING)



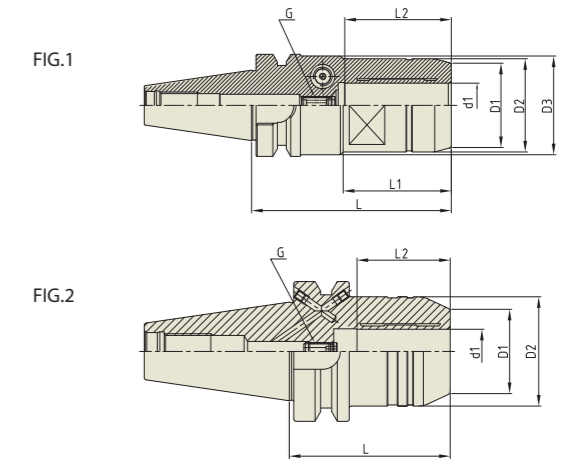
Unit : mm

TAPER No.	MODEL No.	EDP No.	d1	D1	D2	L	L1	L2	WEIGHT (Kg)
30	BT30-HCR12-85	P2770551	12	32	44.5	85	40	37	0.90
	BT30-HCR20-85	P2770552	20	44	44	85	-	42	1.00
40	BT40AD/B-HCR12-90	P2770553	12	32	44.5	90	42.5	37	1.50
	BT40AD/B-HCR20-90	P2770554	20	42	44.5	90	47.5	42	1.60
	BT40AD/B-HCR32-105	P2770555	32	60	60	105	-	55	2.20
50	BT50AD/B-HCR12-95	P2770556	12	32	44.5	95	34	37	3.90
	BT50AD/B-HCR20-100	P2770557	20	42	44.5	100	44	42	4.00
	BT50AD/B-HCR32-115	P2770558	32	60	60	115	-	55	4.10

- ▶ Inch type products are available.
- ▶ Balancing grade G2.5 at 25,000RPM or U max. < 1gmm.
- ▶ Supplied with clamping T-wrench.
- ▶ For applicable Hydraulic Chuck collet, please refer to page D291~D294.

HYDRAULIC CHUCK (Power E Hydro)

HYDRAULIK SPANNFUTTER (POWER E HYDRO)
 MANDRIN HYDRAULIQUE (POWER E HYDRO)
 MANDRINI IDRAULICI (POWER E HYDRO)
 PORTAHERRAMIENTAS HIDRAULICO (POWER E HYDRO)



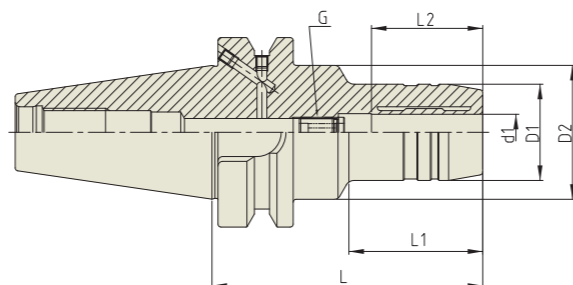
Unit : mm

TAPER No.	MODEL No.	EDP No.	d1	D1	D2	D3	L	L1	L2	G	FIG.	WEIGHT (Kg)
30	BT30-HC12P-69	P2776610P	12	32	42	44.5	69	30.75	41	M8x1.0	1	0.80
	BT30-HC20P-90	P2776611P	20	38	42	44.5	90	48.75	48	M8x1.0	1	0.90
40	BT40AD/B-HC12P-58	P2776601P	12	32	42	-	58	-	41	M8x1.0	2	1.10
	BT40AD/B-HC20P-72.5	P2554001P	20	39.25	49.25	-	72.5	-	48	M8x1.0	2	1.40
50	BT50AD/B-HC20P-83.5	P2755010P	20	39.25	49.25	-	83.5	-	48	M8x1.0	2	3.90
	BT50AD/B-HC32P-90	P2558001P	32	58.5	72	-	90	-	57	M8x1.0	2	4.60

- ▶ Inch type products are available.
- ▶ Balancing grade G2.5 at 25,000RPM or U max. < 1gmm.
- ▶ Supplied with clamping T-wrench.
- ▶ For applicable Hydraulic Chuck collet, please refer to page D291~D294.

HYDRAULIC CHUCK (STANDARD)

HYDRAULIK SPANNFUTTER (STANDARD)
 MANDRIN HYDRAULIQUE (STANDARD)
 MANDRINI IDRAULICI (STANDARD)
 PORTAHERRAMIENTAS HIDRAULICO (ESTÁNDAR)



Unit : mm

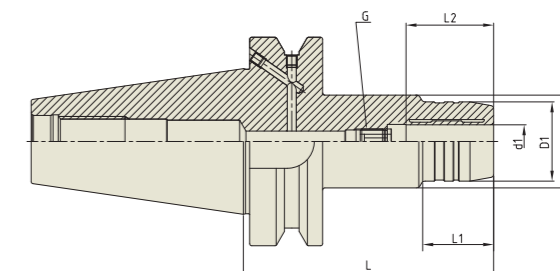
TAPER No.	MODEL No.	EDP No.	d1	D1	D2	L	L1	L2	G	WEIGHT (Kg)
30	BT30-HC6-70	P2770604A	6	26	44.5	70	29.5	27	M5x0.8	0.65
	BT30-HC8-70	P2770605A	8	28	44.5	70	30	27	M6x1.0	0.65
	BT30-HC10-75	P2770606A	10	30	44.5	75	31	32	M8x1.0	0.73
	BT30-HC12-85	P2770607A	12	32	45	85	45	37	M10x1.0	0.80
	BT30-HC14-85	P2770608A	14	34	45	85	45	37	M10x1.0	0.80
	BT30-HC16-90	P2770601A	16	38	45	90	50	42	M10x1.0	0.90
	BT30-HC18-90	P2770609A	18	40	45	90	50	42	M10x1.0	0.90
	BT30-HC20-90	P2770602A	20	42	45	90	50	42	M6x1.0	0.90
40	BT40AD/B-HC6-90	P2554003	6	26	44.5	90	43	27	M5x0.8	1.30
	BT40AD/B-HC8-90	P2554021	8	28	44.5	90	44.5	27	M6x1.0	1.30
	BT40AD/B-HC10-90	P2554005	10	30	44.5	90	44.5	32	M8x1.0	1.35
	BT40AD/B-HC12-90	P2554002	12	32	44.5	90	44.5	37	M10x1.0	1.35
	BT40AD/B-HC14-90	P2770610	14	34	44.5	90	44.5	37	M10x1.0	1.35
	BT40AD/B-HC16-90	P2554006	16	38	44.5	90	47.5	42	M12x1.0	1.40
	BT40AD/B-HC18-90	P2770611	18	40	44.5	90	47.5	42	M12x1.0	1.45
	BT40AD/B-HC20-90	P2554007	20	42	44.5	90	47.5	42	M16x1.0	1.50
	BT40AD/B-HC25-100	P2770641	25	50	60	100	47.5	48	M16x1.0	1.70
	BT40AD/B-HC32-105	P2770612	32	60	-	105	-	55	M16x1.0	2.10

- ▶ Inch type products are available.
- ▶ Balancing grade G2.5 at 25,000RPM or U max. < 1gmm.
- ▶ Supplied with clamping T-wrench.
- ▶ For applicable Hydraulic Chuck collet, please refer to page D291~D294.

▶ NEXT PAGE

HYDRAULIC CHUCK (STANDARD)

HYDRAULIK SPANNFUTTER (STANDARD)
 MANDRIN HYDRAULIQUE (STANDARD)
 MANDRINI IDRAULICI (STANDARD)
 PORTAHERRAMIENTAS HIDRAULICO (ESTÁNDAR)



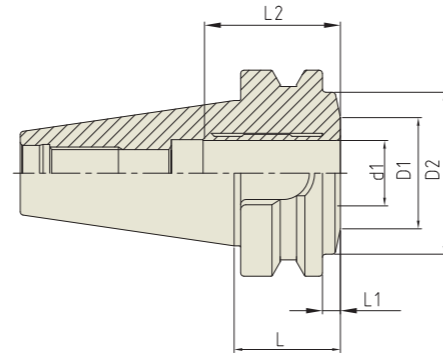
Unit : mm

TAPER No.	MODEL No.	EDP No.	d1	D1	D2	L	L1	L2	G	WEIGHT (Kg)
50	BT50AD/B-HC6-90	P2770613	6	26	44.5	90	34	27	M5x0.8	3.75
	BT50AD/B-HC6-120	P2770614	6	26	44.5	120	34	27	M5x0.8	4.10
	BT50AD/B-HC6-150	P2770615	6	26	44.5	150	34	27	M5x0.8	4.70
	BT50AD/B-HC8-90	P2770616	8	28	44.5	90	34	27	M6x1.0	3.75
	BT50AD/B-HC8-120	P2770617	8	28	44.5	120	34	27	M6x1.0	4.10
	BT50AD/B-HC8-150	P2770618	8	28	44.5	150	34	27	M6x1.0	4.10
	BT50AD/B-HC10-90	P2770619	10	30	44.5	90	34	32	M8x1.0	3.90
	BT50AD/B-HC10-120	P2770620	10	30	44.5	120	34	32	M8x1.0	4.30
	BT50AD/B-HC10-150	P2770621	10	30	44.5	150	34	32	M8x1.0	4.90
	BT50AD/B-HC12-90	P2770622	12	32	44.5	90	34	37	M10x1.0	3.90
	BT50AD/B-HC12-120	P2770623	12	32	44.5	120	34	37	M10x1.0	4.30
	BT50AD/B-HC12-150	P2770624	12	32	44.5	150	34	37	M10x1.0	4.90
	BT50AD/B-HC14-90	P2770625	14	34	44.5	90	34	37	M10x1.0	3.90
	BT50AD/B-HC14-120	P2770626	14	34	44.5	120	34	37	M10x1.0	4.30
	BT50AD/B-HC14-150	P2770627	14	34	44.5	150	34	37	M10x1.0	4.90
	BT50AD/B-HC16-90	P2770628	16	38	44.5	90	34	42	M12x1.0	4.00
	BT50AD/B-HC16-120	P2770629	16	38	44.5	120	34	42	M12x1.0	4.40
	BT50AD/B-HC16-150	P2770630	16	38	44.5	150	34	42	M12x1.0	5.00
	BT50AD/B-HC18-90	P2770631	18	40	44.5	90	34	42	M12x1.0	4.00
	BT50AD/B-HC18-120	P2770632	18	40	44.5	120	34	42	M12x1.0	4.40
BT50AD/B-HC18-150	P2770633	18	40	44.5	150	34	42	M12x1.0	5.00	
BT50AD/B-HC20-90	P2770634	20	42	44.5	90	34	42	M16x1.0	4.00	
BT50AD/B-HC20-120	P2770635	20	42	44.5	120	34	42	M16x1.0	4.40	
BT50AD/B-HC20-150	P2770636	20	42	44.5	150	34	42	M16x1.0	5.00	
BT50AD/B-HC25-105	P2770637	25	57	63	105	52	48	M16x1.0	4.40	
BT50AD/B-HC25-150	P2770638	25	57	63	150	97	48	M16x1.0	5.60	
BT50AD/B-HC32-115	P2770639	32	64	75	115	62	55	M16x1.0	4.70	
BT50AD/B-HC32-150	P2770640	32	64	75	150	97	55	M16x1.0	6.00	

- ▶ Inch type products are available.
- ▶ Balancing grade G2.5 at 25,000RPM or U max. < 1gmm.
- ▶ Supplied with clamping T-wrench.
- ▶ For applicable Hydraulic Chuck collet, please refer to page D291~D294.

HYDRAULIC CHUCK (ULTRA SHORT)

HYDRAULIK SPANNFUTTER (KURZ)
 MANDRIN HYDRAULIQUE (COURT)
 MANDRINI IDRAULICI (CORTO)
 PORTAHERRAMIENTAS HIDRAULICO (CORTO)



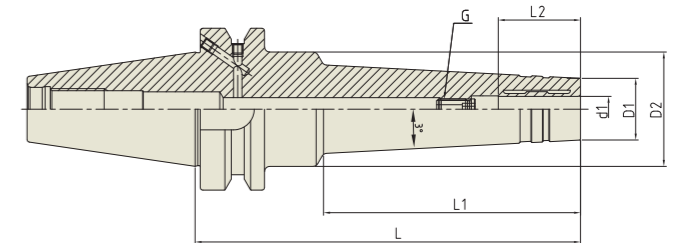
Unit : mm

TAPER No.	MODEL No.	EDP No.	d1	D1	D2	L	L1	L2	WEIGHT (Kg)
40	BT40-HC20-32.5	P2770642	20	34	49.5	32.5	5.5	42	0.99
50	BT50-HC32-50	P2770650	32	49	70.5	50	12	55	3.73

- ▶ Inch type products are available.
- ▶ Balancing grade G2.5 at 25,000RPM or U max. < 1gmm.
- ▶ Supplied with clamping T-wrench.
- ▶ For applicable Hydraulic Chuck collet, please refer to page D291~D294.

HYDRAULIC CHUCK (SLIM)

HYDRAULIK SPANNFUTTER FÜR DEN FORMENBAU
 MANDRIN HYDRAULIQUE POUR MOULISTE
 MANDRINI IDRAULICI PER STAMPAGGIO
 PORTAHERRAMIENTAS HIDRAULICO PARA MOLDES



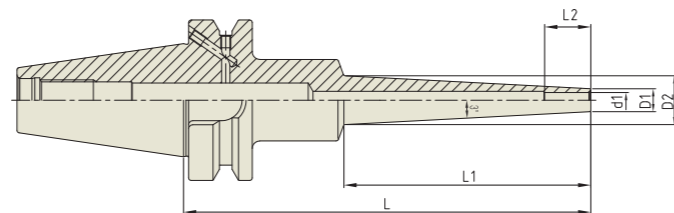
Unit : mm

TAPER No.	MODEL No.	EDP No.	d1	D1	D2	L	L1	L2	G	WEIGHT (Kg)
40	BT40AD/B-HMC6-120	P2770903	6	20	44.5	120	70	27	M5×0.8	1.40
	BT40AD/B-HMC6-150	P2770904	6	20	44.5	150	100	27	M5×0.8	1.65
	BT40AD/B-HMC8-120	P2770905	8	22	44.5	120	70	27	M6×1.0	1.40
	BT40AD/B-HMC8-150	P2770906	8	22	44.5	150	100	27	M6×1.0	1.65
	BT40AD/B-HMC10-120	P2770907	10	24	44.5	120	70	32	M8×1.0	1.40
	BT40AD/B-HMC10-150	P2770908	10	24	44.5	150	100	32	M8×1.0	1.65
	BT40AD/B-HMC12-120	P2770901	12	25	44.5	120	70	37	M10×1.0	1.40
	BT40AD/B-HMC12-150	P2770909	12	25	44.5	150	100	37	M10×1.0	1.65
	BT40AD/B-HMC14-120	P2784200	14	27	44.5	120	70	37	M10×1.0	1.40
	BT40AD/B-HMC14-150	P2784201	14	27	44.5	150	100	37	M10×1.0	1.65
	BT40AD/B-HMC16-120	P2770910	16	32	44.5	120	70	42	M12×1.0	1.45
	BT40AD/B-HMC16-150	P2770911	16	32	44.5	150	100	42	M12×1.0	1.70
50	BT40AD/B-HMC20-120	P2770902	20	34	43.8	120	93	42	M16×1.0	1.50
	BT40AD/B-HMC20-150	P2770912	20	34	46.9	150	123	42	M16×1.0	1.80
	BT50AD/B-HMC6-150	P2770913	6	20	50	150	90	27	M5×0.8	4.70
	BT50AD/B-HMC8-150	P2770914	8	22	50	150	90	27	M6×1.0	4.70
	BT50AD/B-HMC10-150	P2770915	10	24	50	150	90	32	M8×1.0	4.70
	BT50AD/B-HMC12-150	P2770916	12	25	50	150	90	37	M10×1.0	4.70
	BT50AD/B-HMC14-150	P2784202	14	27	50	150	90	37	M10×1.0	4.70
	BT50AD/B-HMC16-150	P2770917	16	32	50	150	90	42	M12×1.0	4.90
BT50AD/B-HMC20-150	P2770918	20	34	50	150	90	42	M16×1.0	5.00	

- ▶ Balancing grade G2.5 at 25,000RPM or U max. < 1gmm.
- ▶ Supplied with clamping T-wrench.
- ▶ For applicable Hydraulic Chuck collet, please refer to page D291~D294.

SHRINK FIT HOLDER (EXTRA SLIM)

SCHRUMPFUTTER
MANDRIN DE FRETTAGE
MADRINI PER CALLETAMENTO A CALDO
PORTAHERRAMIENTAS DE COMPRESION POR CALOR



Unit : mm

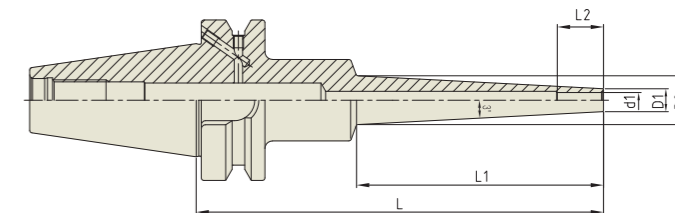
TAPER No.	MODEL No.	EDP No.	d1	D1	D2	L	L1	L2	WEIGHT (Kg)
30	BT30-SFHS3-60	P2779851S	3	6	20	60	22	9	-
	BT30-SFHS3-80	P2779852S	3	6	25	80	42	9	-
	BT30-SFHS3-120	P2779853S	3	6	25	120	67	9	-
	BT30-SFHS4-60	P2779854S	4	7	20	60	22	12	-
	BT30-SFHS4-80	P2779855S	4	7	25	80	42	12	-
	BT30-SFHS4-120	P2779856S	4	7	25	120	67	12	-
	BT30-SFHS6-60	P2779857S	6	9	20	60	22	18	-
	BT30-SFHS6-80	P2779858S	6	9	25	80	42	18	-
	BT30-SFHS6-120	P2779859S	6	9	25	120	67	18	-
	40	BT40AD/B-SFHS3-95	P2779860S	3	6	25	95	42	9
BT40AD/B-SFHS3-120		P2779861S	3	6	25	120	67	9	-
BT40AD/B-SFHS3-160		P2779862S	3	6	25	160	97	9	-
BT40AD/B-SFHS4-95		P2779863S	4	7	25	95	42	12	-
BT40AD/B-SFHS4-120		P2779864S	4	7	25	120	67	12	-
BT40AD/B-SFHS4-160		P2779865S	4	7	32	160	97	12	-
BT40AD/B-SFHS6-95		P2779866S	6	9	25	95	42	18	-
BT40AD/B-SFHS6-120		P2779867S	6	9	25	120	67	18	-
BT40AD/B-SFHS6-160		P2779868S	6	9	32	160	97	18	-
BT40AD/B-SFHS8-95		P2779869S	8	11	25	95	42	24	-
BT40AD/B-SFHS8-120		P2779870S	8	11	32	120	67	24	-
BT40AD/B-SFHS8-160		P2779871S	8	11	32	160	97	24	-
BT40AD/B-SFHS10-95		P2779872S	10	13	25	95	42	30	-
BT40AD/B-SFHS10-120		P2779873S	10	13	32	120	67	30	-
BT40AD/B-SFHS10-160		P2779874S	10	13	32	160	97	30	-
BT40AD/B-SFHS12-95		P2779875S	12	15	32	95	42	30	-
BT40AD/B-SFHS12-120		P2779876S	12	15	32	120	67	30	-
BT40AD/B-SFHS12-160		P2779877S	12	15	32	160	97	30	-

▶ Inch type products are available.
▶ Balancing grade G2.5 at 25,000RPM or U max. < 1gmm.

▶ NEXT PAGE

SHRINK FIT HOLDER (EXTRA SLIM)

SCHRUMPFUTTER
MANDRIN DE FRETTAGE
MADRINI PER CALLETAMENTO A CALDO
PORTAHERRAMIENTAS DE COMPRESION POR CALOR



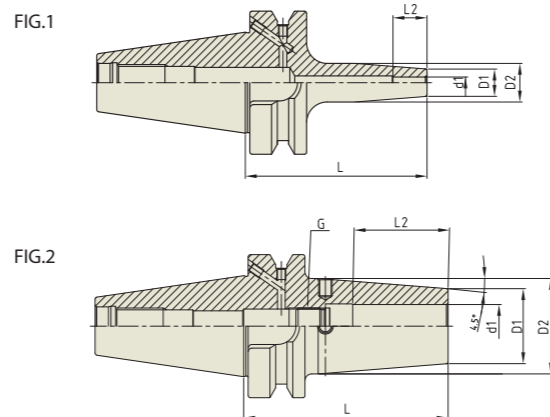
Unit : mm

TAPER No.	MODEL No.	EDP No.	d1	D1	D2	L	L1	L2	WEIGHT (Kg)
50	BT50AD/B-SFHS3-110	P2779878S	3	6	26	110	42	9	-
	BT50AD/B-SFHS3-160	P2779879S	3	6	26	160	97	9	-
	BT50AD/B-SFHS4-110	P2779880S	4	7	26	110	42	12	-
	BT50AD/B-SFHS4-160	P2779881S	4	7	26	160	97	12	-
	BT50AD/B-SFHS6-110	P2779882S	6	9	26	110	42	18	-
	BT50AD/B-SFHS6-160	P2779883S	6	9	26	160	97	18	-
	BT50AD/B-SFHS8-110	P2779884S	8	11	36	110	42	24	-
	BT50AD/B-SFHS8-160	P2779885S	8	11	36	160	97	24	-
	BT50AD/B-SFHS10-110	P2779886S	10	13	36	110	42	30	-
	BT50AD/B-SFHS10-160	P2779887S	10	13	36	160	97	30	-
	BT50AD/B-SFHS12-110	P2779888S	12	15	36	110	42	30	-
	BT50AD/B-SFHS12-160	P2779889S	12	15	36	160	97	30	-

▶ Inch type products are available.
▶ Balancing grade G2.5 at 25,000RPM or U max. < 1gmm.

SHRINK FIT HOLDER

SCHRUMPFUTTER
MANDRIN DE FRETAGE
MADRINI PER CALLETAMENTO A CALDO
PORTAHERRAMIENTAS DE COMPRESION POR CALOR



Unit : mm

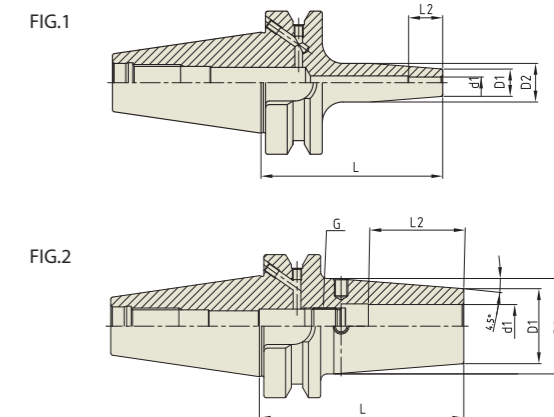
TAPER No.	MODEL No.	EDP No.	d1	D1	D2	L	L2	G	FIG.	WEIGHT (Kg)
30	BT30-SFH3-60	P2776703	3	11	15	60	10	-	1	0.40
	BT30-SFH4-60	P2776702	4	11	15	60	12	-	1	0.40
	BT30-SFH5-60	P2776704	5	11	15	60	15	-	1	0.40
	BT30-SFH6-60	P2776701	6	21	27	60	36	M5×0.8	2	0.40
	BT30-SFH8-60	P2776705	8	21	27	60	36	M6×1.0	2	0.40
	BT30-SFH10-80	P2776706	10	24	32	80	42	M8×1.0	2	0.40
	BT30-SFH12-80	P2776707	12	24	32	80	47	M10×1.0	2	0.42
	BT30-SFH14-80	P2776708	14	27	34	80	47	M10×1.0	2	0.42
	BT30-SFH16-80	P2776709	16	27	34	80	50	M12×1.0	2	0.42
	BT30-SFH18-80	P2776710	18	33	42	80	50	M12×1.0	2	0.42
	BT30-SFH20-90	P2776711	20	33	42	90	52	M16×1.0	2	0.44
	40	BT40AD/B-SFH3-90	P2776712	3	11	15	90	10	-	1
BT40AD/B-SFH4-90		P2776713	4	11	15	90	12	-	1	1.00
BT40AD/B-SFH5-90		P2776714	5	11	15	90	15	-	1	1.00
BT40AD/B-SFH6-90		P2771601	6	21	27	90	36	M5×0.8	2	1.10
BT40AD/B-SFH6-130		P2771657	6	21	27	130	36	M5×0.8	2	-
BT40AD/B-SFH6-160		P2771602	6	21	27	160	36	M5×0.8	2	1.15
BT40AD/B-SFH8-90		P2771603	8	21	27	90	36	M6×1.0	2	1.11
BT40AD/B-SFH8-130		P2771658	8	21	27	130	36	M6×1.0	2	-
BT40AD/B-SFH8-160		P2771604	8	21	27	160	36	M6×1.0	2	1.15
BT40AD/B-SFH10-90		P2771605	10	24	32	90	42	M8×1.0	2	1.10
BT40AD/B-SFH10-130		P2771659	10	24	32	130	42	M8×1.0	2	-
BT40AD/B-SFH10-160		P2771606	10	24	32	160	42	M8×1.0	2	1.15
BT40AD/B-SFH12-90		P2771607	12	24	32	90	47	M10×1.0	2	1.10
BT40AD/B-SFH12-130		P2771660	12	24	32	130	47	M10×1.0	2	-
BT40AD/B-SFH12-160		P2771608	12	24	32	160	47	M10×1.0	2	1.15
BT40AD/B-SFH14-90		P2771611	14	27	34	90	47	M10×1.0	2	1.20
BT40AD/B-SFH14-130		P2771661	14	27	34	130	47	M10×1.0	2	-
BT40AD/B-SFH14-160		P2771612	14	27	34	160	47	M10×1.0	2	1.50

- ▶ Inch type products are available.
- ▶ Supplied without balancing screws.
- ▶ Balancing grade G2.5 at 25,000RPM or U max. < 1gmm.

▶ NEXT PAGE

SHRINK FIT HOLDER

SCHRUMPFUTTER
MANDRIN DE FRETAGE
MADRINI PER CALLETAMENTO A CALDO
PORTAHERRAMIENTAS DE COMPRESION POR CALOR



Unit : mm

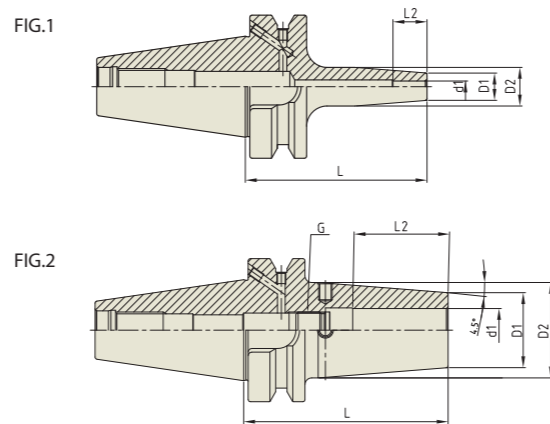
TAPER No.	MODEL No.	EDP No.	d1	D1	D2	L	L2	G	FIG.	WEIGHT (Kg)
40	BT40AD/B-SFH16-90	P2771609	16	27	34	90	50	M12×1.0	2	1.20
	BT40AD/B-SFH16-130	P2771662	16	27	34	130	50	M12×1.0	2	-
	BT40AD/B-SFH16-160	P2771610	16	27	34	160	50	M12×1.0	2	1.50
	BT40AD/B-SFH18-90	P2771613	18	33	42	90	50	M12×1.0	2	1.30
	BT40AD/B-SFH18-130	P2771663	18	33	42	130	50	M12×1.0	2	-
	BT40AD/B-SFH18-160	P2771614	18	33	42	160	50	M12×1.0	2	1.60
	BT40AD/B-SFH20-90	P2771615	20	33	42	90	52	M16×1.0	2	1.40
	BT40AD/B-SFH20-130	P2771664	20	33	42	130	52	M16×1.0	2	-
	BT40AD/B-SFH20-160	P2771616	20	33	42	160	52	M16×1.0	2	1.70
	BT40AD/B-SFH25-100	P2771617	25	44	53	100	58	M16×1.0	2	1.70
	BT40AD/B-SFH25-130	P2771665	25	44	53	130	58	M16×1.0	2	-
	BT40AD/B-SFH25-160	P2771618	25	44	53	160	58	M16×1.0	2	2.00
50	BT50AD/B-SFH3-100	P2771619	3	11	15	100	10	-	1	1.50
	BT50AD/B-SFH4-100	P2771620	4	11	15	100	12	-	1	1.50
	BT50AD/B-SFH5-100	P2771621	5	11	15	100	15	-	1	1.50
	BT50AD/B-SFH6-100	P2771622	6	21	27	100	36	M5×0.8	2	1.50
	BT50AD/B-SFH6-130	P2771666	6	21	27	130	36	M5×0.8	2	-
	BT50AD/B-SFH6-160	P2771623	6	21	27	160	36	M5×0.8	2	2.00
	BT50AD/B-SFH6-200	P2771667	6	21	27	200	36	M5×0.8	2	-
	BT50AD/B-SFH8-100	P2771624	8	21	27	100	36	M6×1.0	2	1.50
	BT50AD/B-SFH8-130	P2771668	8	21	27	130	36	M6×1.0	2	-
	BT50AD/B-SFH8-160	P2771625	8	21	27	160	36	M6×1.0	2	2.00
	BT50AD/B-SFH8-200	P2771669	8	21	27	200	36	M6×1.0	2	-
	BT50AD/B-SFH10-100	P2771626	10	24	32	100	42	M8×1.0	2	1.50
	BT50AD/B-SFH10-130	P2771670	10	24	32	130	42	M8×1.0	2	-
	BT50AD/B-SFH10-160	P2771627	10	24	32	160	42	M8×1.0	2	2.00
	BT50AD/B-SFH10-200	P2771671	10	24	32	200	42	M8×1.0	2	-
	BT50AD/B-SFH12-100	P2771628	12	24	32	100	47	M10×1.0	2	1.50
	BT50AD/B-SFH12-130	P2771672	12	24	32	130	47	M10×1.0	2	-
	BT50AD/B-SFH12-160	P2771629	12	24	32	160	47	M10×1.0	2	2.00
BT50AD/B-SFH12-200	P2771673	12	24	32	200	47	M10×1.0	2	-	

- ▶ Inch type products are available.
- ▶ Supplied without balancing screws.
- ▶ Balancing grade G2.5 at 25,000RPM or U max. < 1gmm.

▶ NEXT PAGE

SHRINK FIT HOLDER

SCHRUMPFUTTER
MANDRIN DE FRETTAGE
MADRINI PER CALLETAMENTO A CALDO
PORTAHERRAMIENTAS DE COMPRESION POR CALOR



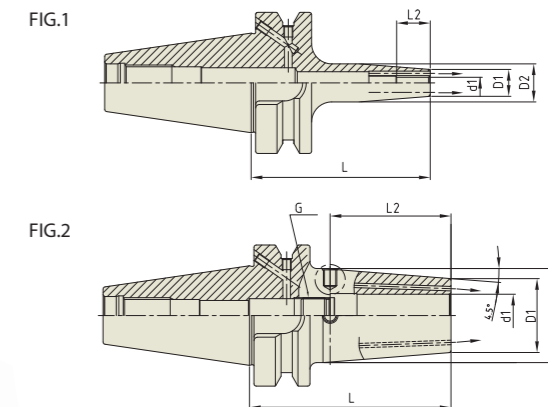
Unit : mm

TAPER No.	MODEL No.	EDP No.	d1	D1	D2	L	L2	G	FIG.	WEIGHT (Kg)
50	BT50AD/B-SFH14-100	P2771630	14	27	34	100	47	M10×1.0	2	1.60
	BT50AD/B-SFH14-130	P2771674	14	27	34	130	47	M10×1.0	2	-
	BT50AD/B-SFH14-160	P2771631	14	27	34	160	47	M10×1.0	2	2.10
	BT50AD/B-SFH14-200	P2771675	14	27	34	200	47	M10×1.0	2	-
	BT50AD/B-SFH16-100	P2771632	16	27	34	100	50	M12×1.0	2	1.60
	BT50AD/B-SFH16-130	P2771676	16	27	34	130	50	M12×1.0	2	-
	BT50AD/B-SFH16-160	P2771633	16	27	34	160	50	M12×1.0	2	2.10
	BT50AD/B-SFH16-200	P2771677	16	27	34	200	50	M12×1.0	2	-
	BT50AD/B-SFH18-100	P2771634	18	33	42	100	50	M12×1.0	2	1.60
	BT50AD/B-SFH18-130	P2771678	18	33	42	130	50	M12×1.0	2	-
	BT50AD/B-SFH18-160	P2771635	18	33	42	160	50	M12×1.0	2	2.00
	BT50AD/B-SFH18-200	P2771679	18	33	42	200	50	M12×1.0	2	-
	BT50AD/B-SFH20-100	P2771636	20	33	42	100	52	M16×1.0	2	1.80
	BT50AD/B-SFH20-130	P2771680	20	33	42	130	52	M16×1.0	2	-
	BT50AD/B-SFH20-160	P2771637	20	33	42	160	52	M16×1.0	2	2.20
	BT50AD/B-SFH20-200	P2771681	20	33	42	200	52	M16×1.0	2	-
	BT50AD/B-SFH25-100	P2771638	25	44	53	100	58	M16×1.0	2	2.00
	BT50AD/B-SFH25-130	P2771682	25	44	53	130	58	M16×1.0	2	-
	BT50AD/B-SFH25-160	P2771639	25	44	53	160	58	M16×1.0	2	2.40
	BT50AD/B-SFH25-200	P2771683	25	44	53	200	58	M16×1.0	2	-

- ▶ Inch type products are available.
- ▶ Supplied without balancing screws.
- ▶ Balancing grade G2.5 at 25,000RPM or U max. < 1gmm.

SHRINK FIT HOLDER (COOLANT CHANNEL)

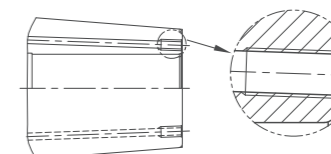
SCHRUMPFUTTER
MANDRIN DE FRETTAGE
MADRINI PER CALLETAMENTO A CALDO
PORTAHERRAMIENTAS DE COMPRESION POR CALOR



Unit : mm

TAPER No.	MODEL No.	EDP No.	d1	D1	D2	L	L2	G	FIG.	WEIGHT (Kg)
40	BT40AD/B-SFH3C-90*1	P2863000C	3	12	17	90	10	-	1	-
	BT40AD/B-SFH4C-90*1	P2863001C	4	12	17	90	12	-	1	-
	BT40AD/B-SFH5C-90*1	P2863002C	5	12	17	90	15	-	1	-
	BT40AD/B-SFH6C-90	P2862085C	6	21	27	90	36	M5x0.8	2	1.10
	BT40AD/B-SFH6C-130	P2863024C	6	21	27	130	36	M5x0.8	2	-
	BT40AD/B-SFH6C-160	P2862086C	6	21	27	160	36	M5x0.8	2	1.15
	BT40AD/B-SFH8C-90	P2862087C	8	21	27	90	36	M6x1.0	2	1.11
	BT40AD/B-SFH8C-130	P2863025C	8	21	27	130	36	M6x1.0	2	-
	BT40AD/B-SFH8C-160	P2862088C	8	21	27	160	36	M6x1.0	2	1.15
	BT40AD/B-SFH10C-90	P2862089C	10	24	32	90	41	M8x1.0	2	1.10
	BT40AD/B-SFH10C-130	P2863026C	10	24	32	130	41	M8x1.0	2	-
	BT40AD/B-SFH10C-160	P2862090C	10	24	32	160	41	M8x1.0	2	1.15
	BT40AD/B-SFH12C-90	P2862091C	12	24	32	90	47	M10x1.0	2	1.10
	BT40AD/B-SFH12C-130	P2863027C	12	24	32	130	47	M10x1.0	2	-
	BT40AD/B-SFH12C-160	P2862092C	12	24	32	160	47	M10x1.0	2	1.15
	BT40AD/B-SFH14C-90	P2862093C	14	27	34	90	47	M10x1.0	2	1.20
	BT40AD/B-SFH14C-130	P2863028C	14	27	34	130	47	M10x1.0	2	-
	BT40AD/B-SFH14C-160	P2862094C	14	27	34	160	47	M10x1.0	2	1.50
	BT40AD/B-SFH16C-90	P2862095C	16	27	34	90	50	M12x1.0	2	1.20
	BT40AD/B-SFH16C-130	P2863029C	16	27	34	130	50	M12x1.0	2	-
	BT40AD/B-SFH16C-160	P2862096C	16	27	34	160	50	M12x1.0	2	1.50
	BT40AD/B-SFH18C-90	P2862097C	18	33	42	90	50	M12x1.0	2	1.30
	BT40AD/B-SFH18C-130	P2863030C	18	33	42	130	50	M12x1.0	2	-
	BT40AD/B-SFH18C-160	P2862098C	18	33	42	160	50	M12x1.0	2	1.60
	BT40AD/B-SFH20C-90	P2862099C	20	33	42	90	52	M16x1.0	2	1.40
	BT40AD/B-SFH20C-130	P2863031C	20	33	42	130	52	M16x1.0	2	-
	BT40AD/B-SFH20C-160	P2862100C	20	33	42	160	52	M16x1.0	2	1.70
	BT40AD/B-SFH25C-100	P2862101C	25	44	53	100	58	M16x1.0	2	1.70
	BT40AD/B-SFH25C-130	P2863032C	25	44	53	130	58	M16x1.0	2	-
	BT40AD/B-SFH25C-160	P2862102C	25	44	53	160	58	M16x1.0	2	2.00

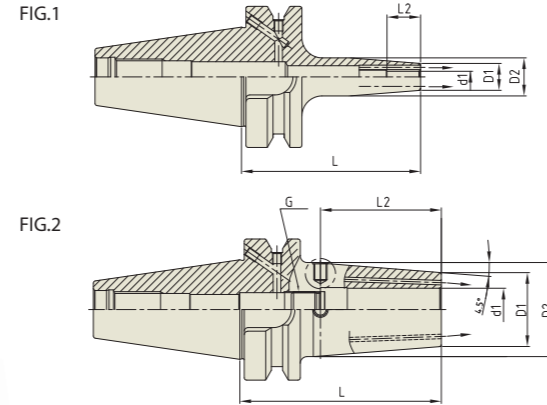
- ▶ Inch type products are available.
- ▶ Supplied without balancing screws.
- ▶ Balancing grade G2.5 at 25,000RPM or U max. < 1gmm.
- ▶ With two coolant channel bores.
- ▶ Resealable coolant channel type is available upon request. (Thread for plugging screw & 2 screws)
- ▶ *1 Resealable type is not available.



▶ NEXT PAGE

SHRINK FIT HOLDER (COOLANT CHANNEL)

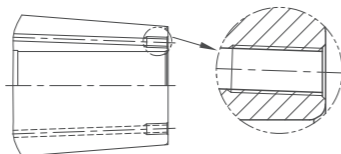
SCHRUMPFUTTER
MANDRIN DE FRETAGE
MADRINI PER CALLETAMENTO A CALDO
PORTAHERRAMIENTAS DE COMPRESION POR CALOR



Unit : mm

TAPER No.	MODEL No.	EDP No.	d1	D1	D2	L	L2	G	FIG.	WEIGHT (Kg)
50	BT50AD/B-SFH3C-100*1	P28603012C	3	12	17	100	10	-	1	-
	BT50AD/B-SFH4C-100*1	P28603013C	4	12	17	100	12	-	1	-
	BT50AD/B-SFH5C-100*1	P28603014C	5	12	17	100	15	-	1	-
	BT50AD/B-SFH6C-100	P2862103C	6	21	27	100	36	M5x0.8	2	1.50
	BT50AD/B-SFH6C-130	P2863033C	6	21	27	130	36	M5x0.8	2	-
	BT50AD/B-SFH6C-160	P2862104C	6	21	27	160	36	M5x0.8	2	2.00
	BT50AD/B-SFH6C-200	P2863034C	6	21	27	200	36	M5x0.8	2	-
	BT50AD/B-SFH8C-100	P2862105C	8	21	27	100	36	M6x1.0	2	1.50
	BT50AD/B-SFH8C-130	P2863035C	8	21	27	130	36	M6x1.0	2	-
	BT50AD/B-SFH8C-160	P2862106C	8	21	27	160	36	M6x1.0	2	2.00
	BT50AD/B-SFH8C-200	P2863036C	8	21	27	200	36	M6x1.0	2	-
	BT50AD/B-SFH10C-100	P2862107C	10	24	32	100	42	M8x1.0	2	1.10
	BT50AD/B-SFH10C-130	P2863037C	10	24	32	130	42	M8x1.0	2	-
	BT50AD/B-SFH10C-160	P2862108C	10	24	32	160	42	M8x1.0	2	1.15
	BT50AD/B-SFH10C-200	P2863038C	10	24	32	200	42	M8x1.0	2	-
	BT50AD/B-SFH12C-100	P2862109C	12	24	32	100	47	M10x1.0	2	1.60
	BT50AD/B-SFH12C-130	P2863039C	12	24	32	130	47	M10x1.0	2	-
	BT50AD/B-SFH12C-160	P2862110C	12	24	32	160	47	M10x1.0	2	2.10
	BT50AD/B-SFH12C-200	P2863040C	12	24	32	200	47	M10x1.0	2	-
	BT50AD/B-SFH14C-100	P2862111C	14	27	34	100	47	M10x1.0	2	1.60
BT50AD/B-SFH14C-130	P2863041C	14	27	34	130	47	M10x1.0	2	-	
BT50AD/B-SFH14C-160	P2862112C	14	27	34	160	47	M10x1.0	2	2.10	
BT50AD/B-SFH14C-200	P2863042C	14	27	34	200	47	M10x1.0	2	-	
BT50AD/B-SFH16C-100	P2862113C	16	27	34	100	50	M12x1.0	2	1.60	
BT50AD/B-SFH16C-130	P2863043C	16	27	34	130	50	M12x1.0	2	-	
BT50AD/B-SFH16C-160	P2862114C	16	27	34	160	50	M12x1.0	2	2.10	
BT50AD/B-SFH16C-200	P2863044C	16	27	34	200	50	M12x1.0	2	-	

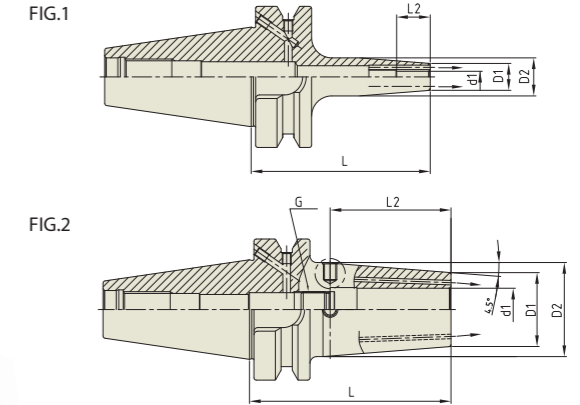
- ▶ Inch type products are available.
- ▶ Supplied without balancing screws.
- ▶ Balancing grade G2.5 at 25,000RPM or U max. < 1gmm.
- ▶ With two coolant channel bores.
- ▶ Resealable coolant channel type is available upon request. (Thread for plugging screw & 2 screws)
- ▶ *1 Resealable type is not available.



▶ NEXT PAGE

SHRINK FIT HOLDER (COOLANT CHANNEL)

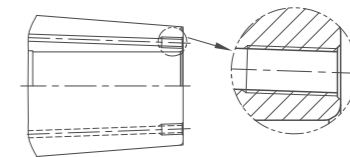
SCHRUMPFUTTER
MANDRIN DE FRETAGE
MADRINI PER CALLETAMENTO A CALDO
PORTAHERRAMIENTAS DE COMPRESION POR CALOR



Unit : mm

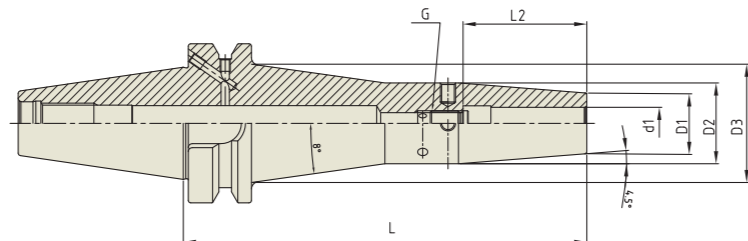
TAPER No.	MODEL No.	EDP No.	d1	D1	D2	L	L2	G	FIG.	WEIGHT (Kg)
50	BT50AD/B-SFH18C-100	P2862115C	18	33	42	100	50	M12x1.0	2	1.60
	BT50AD/B-SFH18C-130	P2863045C	18	33	42	130	50	M12x1.0	2	-
	BT50AD/B-SFH18C-160	P2862116C	18	33	42	160	50	M12x1.0	2	2.00
	BT50AD/B-SFH18C-200	P2863046C	18	33	42	200	50	M12x1.0	2	-
	BT50AD/B-SFH20C-100	P2862117C	20	33	42	100	52	M16x1.0	2	1.80
	BT50AD/B-SFH20C-130	P2863047C	20	33	42	130	52	M16x1.0	2	-
	BT50AD/B-SFH20C-160	P2862118C	20	33	42	160	52	M16x1.0	2	2.20
	BT50AD/B-SFH20C-200	P2863048C	20	33	42	200	52	M16x1.0	2	-
	BT50AD/B-SFH25C-100	P2862119C	25	44	53	100	58	M16x1.0	2	2.00
	BT50AD/B-SFH25C-130	P2863049C	25	44	53	130	58	M16x1.0	2	-
	BT50AD/B-SFH25C-160	P2862120C	25	44	53	160	58	M16x1.0	2	2.40
	BT50AD/B-SFH25C-200	P2863050C	25	44	53	200	58	M16x1.0	2	-

- ▶ Inch type products are available.
- ▶ Supplied without balancing screws.
- ▶ Balancing grade G2.5 at 25,000RPM or U max. < 1gmm.
- ▶ With two coolant channel bores.
- ▶ Resealable coolant channel type is available upon request. (Thread for plugging screw & 2 screws)



SHRINK FIT HOLDER (REINFORCED)

SCHRUMPFUTTER (VERSTÄRKT)
 MANDRIN DE FRETAGE (RENFORCÉ)
 MADRINI PER CALLETAMENTO A CALDO (RINFORZATO)
 PORTAHERRAMIENTAS DE COMPRESION POR CALOR (REFORZADO)



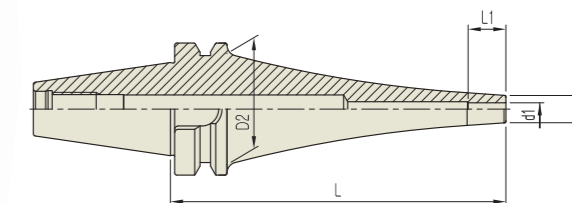
Unit : mm

TAPER No.	MODEL No.	EDP No.	d1	D1	D2	D3	L	L2	G	WEIGHT (Kg)
40	BT40AD/B-SFH6 TW-160	P2801601TW	6	21	27	41.9	160	36	M5x0.8	1.64
	BT40AD/B-SFH8 TW-160	P2801602TW	8	21	27	41.9	160	36	M6x1.0	1.63
	BT40AD/B-SFH10 TW-160	P2801603TW	10	24	32	46.9	160	42	M8x1.0	1.84
	BT40AD/B-SFH12 TW-160	P2801604TW	12	24	32	46.9	160	47	M10x1.0	1.83
	BT40AD/B-SFH14 TW-160	P2801605TW	14	27	34	48.9	160	47	M10x1.0	1.80
	BT40AD/B-SFH16 TW-160	P2801606TW	16	27	34	48.9	160	50	M12x1.0	1.92
50	BT50AD/B-SFH6 TW-160	P2801607TW	6	21	27	38.8	160	36	M5x0.8	4.12
	BT50AD/B-SFH8 TW-160	P2801608TW	8	21	27	38.8	160	36	M6x1.0	4.57
	BT50AD/B-SFH10 TW-160	P2801609TW	10	24	32	43.8	160	42	M8x1.0	4.76
	BT50AD/B-SFH12 TW-160	P2801610TW	12	24	32	43.8	160	47	M10x1.0	4.74
	BT50AD/B-SFH14 TW-160	P2801611TW	14	27	34	45.8	160	47	M10x1.0	4.70
	BT50AD/B-SFH16 TW-160	P2801612TW	16	27	34	45.8	160	50	M12x1.0	4.69
	BT50AD/B-SFH20 TW-160	P2801613TW	20	33	42	53.8	160	52	M16x1.0	5.17

- ▶ Inch type products are available.
- ▶ Supplied without balancing screws.
- ▶ Balancing grade G2.5 at 25,000RPM or U max. < 1gmm.

SHRINK FIT HOLDER (CURVED)

SCHRUMPFUTTER (GEBOGEN)
 MANDRIN DE FRETAGE (INCURVÉ)
 MADRINI PER CALLETAMENTO A CALDO (CURVO)
 PORTAHERRAMIENTAS DE COMPRESION POR CALOR (CURVADO)



Unit : mm

TAPER No.	MODEL No.	EDP No.	d1	D1	D2	L	L1	WEIGHT (Kg)
30	BT30-SFH4CV-90	P2785072CV	4	10	34	90	12	-
	BT30-SFH4CV-120	P2785073CV	4	10	34	120	12	-
	BT30-SFH6CV-90	P2785074CV	6	13	34	90	18	-
	BT30-SFH6CV-120	P2785075CV	6	13	34	120	18	-
	BT30-SFH8CV-90	P2785076CV	8	16	34	90	18	-
	BT30-SFH10CV-90	P2785077CV	10	19	34	90	18	-
	40	BT40AD/B-SFH4CV-120	P2785078CV	4	10	53	120	12
BT40AD/B-SFH4CV-150		P2785079CV	4	10	53	150	12	-
BT40AD/B-SFH6CV-90		P2785080CV	6	13	53	90	18	-
BT40AD/B-SFH6CV-120		P2785081CV	6	13	53	120	18	-
BT40AD/B-SFH6CV-150		P2785082CV	6	13	53	150	18	-
BT40AD/B-SFH8CV-90		P2785083CV	8	16	53	90	24	-
BT40AD/B-SFH8CV-120		P2785084CV	8	16	53	120	24	-
BT40AD/B-SFH8CV-150		P2785085CV	8	16	53	150	24	-
BT40AD/B-SFH10CV-90		P2785086CV	10	19	53	90	30	-
BT40AD/B-SFH10CV-120		P2785087CV	10	19	53	120	30	-
BT40AD/B-SFH10CV-150		P2785088CV	10	19	53	150	30	-
BT40AD/B-SFH12CV-90		P2785089CV	12	22	53	90	30	-
BT40AD/B-SFH12CV-120		P2785090CV	12	22	53	120	30	-
BT40AD/B-SFH12CV-150	P2785091CV	12	22	53	150	30	-	
50	BT50AD/B-SFH8CV-195	P2785092CV	8	16	85	195	24	-
	BT50AD/B-SFH8CV-225	P2785093CV	8	16	85	225	24	-
	BT50AD/B-SFH10CV-165	P2785094CV	10	19	85	165	30	-
	BT50AD/B-SFH10CV-195	P2785095CV	10	19	85	195	30	-
	BT50AD/B-SFH10CV-225	P2785096CV	10	19	85	225	30	-
	BT50AD/B-SFH12CV-165	P2785097CV	12	22	85	165	30	-
	BT50AD/B-SFH12CV-195	P2785098CV	12	22	85	195	30	-
BT50AD/B-SFH12CV-225	P2785099CV	12	22	85	225	30	-	

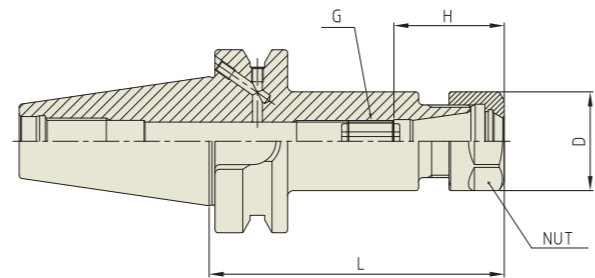
- ▶ Inch type products are available.
- ▶ Balancing grade G2.5 at 25,000RPM or U max. < 1gmm.

YG ER COLLET CHUCK

ER

ER COLLET CHUCK

SPANN FUTTER - ER
MANDRIN À PINCES - ER
MANDRINO PORTA PINZE - ER
PORTAPINZAS - ER



Unit : mm									
TAPER No.	MODEL No.	EDP No.	CLAMPING RANGE	L	D	G	H	NUT / COLLET	WEIGHT (Kg)
30	BT30-ER11-70	P2776501A	0.5 - 7.0	70	19	M6	45	ER11	0.50
	BT30-ER11-100	P2776502A	0.5 - 7.0	100	19	M6	45	ER11	0.50
	BT30-ER16-70	P2776503A	0.5 - 10.0	70	28	M10	45	ER16	1.00
	BT30-ER16-100	P2776506A	0.5 - 10.0	100	28	M10	45	ER16	1.10
	BT30-ER20-80	P2776507A	0.5 - 13.0	80	34	M12	50	ER20	1.20
	BT30-ER20-100	P2776508A	0.5 - 13.0	100	34	M12	50	ER20	1.30
	BT30-ER25-70	P2776509A	1.0 - 16.0	70	42	M12	65	ER25	1.20
	BT30-ER25-100	P2776510A	1.0 - 16.0	100	42	M12	65	ER25	1.30
	BT30-ER32-60	P2776511A	1.0 - 20.0	60	50	M12	65	ER32	1.40
	BT30-ER32-90	P2776512A	1.0 - 20.0	90	50	M12	65	ER32	1.90
40	BT40AD/B-ER11-75	P2776513	0.5 - 7.0	75	19	M6	45	ER11	1.00
	BT40AD/B-ER11-100	P2776514	0.5 - 7.0	100	19	M6	45	ER11	1.10
	BT40AD/B-ER16-75	P2776504	0.5 - 10.0	75	28	M10	45	ER16	1.10
	BT40AD/B-ER16-100	P2553021	0.5 - 10.0	100	28	M10	45	ER16	1.20
	BT40AD/B-ER16-120	P2776515	0.5 - 10.0	120	28	M10	45	ER16	1.40
	BT40AD/B-ER20-75	P2776516	0.5 - 13.0	75	34	M12	50	ER20	1.40
	BT40AD/B-ER20-100	P2553017	0.5 - 13.0	100	34	M12	50	ER20	1.80
	BT40AD/B-ER20-135	P2776517	0.5 - 13.0	135	34	M12	50	ER20	2.20
	BT40AD/B-ER25-75	P2600012	1.0 - 16.0	75	42	M12	65	ER25	1.40
	BT40AD/B-ER25-100	P2553018	1.0 - 16.0	100	42	M12	65	ER25	1.80
	BT40AD/B-ER25-135	P2776518	1.0 - 16.0	135	42	M12	65	ER25	2.20
	BT40AD/B-ER25-150	P2776519	1.0 - 16.0	150	42	M12	65	ER25	2.40
	BT40AD/B-ER32-60	P2553501	1.0 - 20.0	60	50	M12	65	ER32	1.80
	BT40AD/B-ER32-100	P2776505	1.0 - 20.0	100	50	M12	65	ER32	2.20

- ▶ Inch type products are available.
- ▶ Balancing grade G2.5 at 25,000RPM or U max. < 1gmm.
- ▶ For applicable ER collet, please refer to page D296~D304.
- ▶ For applicable ER nut, Sealing disk and Spanner, please refer to page D305~D309.

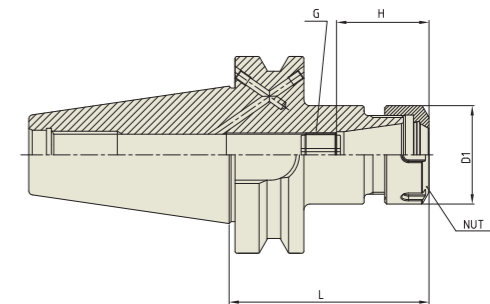
▶ NEXT PAGE

YG ER COLLET CHUCK

ER

ER COLLET CHUCK

SPANN FUTTER - ER
MANDRIN À PINCES - ER
MANDRINO PORTA PINZE - ER
PORTAPINZAS - ER

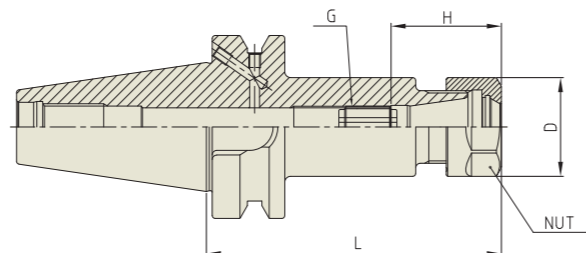


Unit : mm									
TAPER No.	MODEL No.	EDP No.	CLAMPING RANGE	L	D	G	H	NUT / COLLET	WEIGHT (Kg)
50	BT50AD/B-ER16-100	P2776522	0.5 - 10.0	100	28	M10	45	ER16	4.20
	BT50AD/B-ER16-120	P2776523	0.5 - 10.0	120	28	M10	45	ER16	4.40
	BT50AD/B-ER16-165	P2776524	0.5 - 10.0	165	28	M10	45	ER16	4.60
	BT50AD/B-ER20-100	P2776525	0.5 - 13.0	100	34	M12	50	ER20	4.60
	BT50AD/B-ER20-135	P2776526	0.5 - 13.0	135	34	M12	50	ER20	4.80
	BT50AD/B-ER20-165	P2776527	0.5 - 13.0	165	34	M12	50	ER20	5.00
	BT50AD/B-ER25-100	P2776528	1.0 - 16.0	100	42	M12	65	ER25	4.70
	BT50AD/B-ER25-135	P2776529	1.0 - 16.0	135	42	M12	65	ER25	4.80
	BT50AD/B-ER25-165	P2776530	1.0 - 16.0	150	42	M12	65	ER25	5.00
	BT50AD/B-ER32-100	P2600026	1.0 - 20.0	100	50	M12	65	ER32	5.20
	BT50AD/B-ER32-135	P2776531	1.0 - 20.0	135	50	M12	65	ER32	5.70
	BT50AD/B-ER32-165	P2776532	1.0 - 20.0	165	50	M12	65	ER32	5.80
	BT50AD/B-ER40-100	P2600027	2.0 - 30.0	100	63	M12	75	ER40	5.60
	BT50AD/B-ER40-150	P2776533	2.0 - 30.0	150	63	M12	75	ER40	6.10
	BT50AD/B-ER50-100	P2776534	4.0 - 34.0	100	78	M16	85	ER50	5.80
	BT50AD/B-ER50-150	P2776535	4.0 - 34.0	150	78	M16	85	ER50	6.30

- ▶ Inch type products are available.
- ▶ Balancing grade G2.5 at 25,000RPM or U max. < 1gmm.
- ▶ For applicable ER collet, please refer to page D296~D304.
- ▶ For applicable ER nut, Sealing disk and Spanner, please refer to page D305~D309.

ER COLLET CHUCK

SPANN FUTTER-ER
MANDRIN À PINCES-ER
MANDRINO PORTA PINZE-ER
PORTAPINZAS-ER

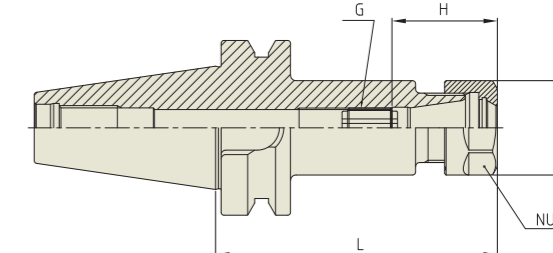


Unit : mm									
TAPER No.	MODEL No.	EDP No.	CLAMPING RANGE	L	D	G	H	NUT / COLLET	WEIGHT (Kg)
40	BT40AD/B-ER11-75	P2776551	0.5 - 7.0	75	19	M6	45	ER11	1.00
	BT40AD/B-ER11-100	P2776552	0.5 - 7.0	100	19	M6	45	ER11	1.10
	BT40AD/B-ER16-75	P2776553	0.5 - 10.0	75	28	M10	45	ER16	1.10
	BT40AD/B-ER16-100	P2776554	0.5 - 10.0	100	28	M10	45	ER16	1.20
	BT40AD/B-ER16-120	P2776555	0.5 - 10.0	120	28	M10	45	ER16	1.40
	BT40AD/B-ER20-75	P2776556	0.5 - 13.0	75	34	M12	50	ER20	1.40
	BT40AD/B-ER20-100	P2776557	0.5 - 13.0	100	34	M12	50	ER20	1.80
	BT40AD/B-ER20-135	P2776558	0.5 - 13.0	135	34	M12	50	ER20	2.20
	BT40AD/B-ER25-75	P2776559	1.0 - 16.0	75	42	M12	65	ER25	1.40
	BT40AD/B-ER25-100	P2776560	1.0 - 16.0	100	42	M12	65	ER25	1.80
	BT40AD/B-ER25-135	P2776561	1.0 - 16.0	135	42	M12	65	ER25	2.20
	BT40AD/B-ER25-150	P2776562	1.0 - 16.0	150	42	M12	65	ER25	2.40
	BT40AD/B-ER32-60	P2776563	1.0 - 20.0	60	50	M12	65	ER32	1.80
	BT40AD/B-ER32-100	P2776564	1.0 - 20.0	100	50	M12	65	ER32	2.20
50	BT50AD/B-ER16-100	P2776565	0.5 - 10.0	100	28	M10	45	ER16	4.20
	BT50AD/B-ER16-120	P2776566	0.5 - 10.0	120	28	M10	45	ER16	4.40
	BT50AD/B-ER16-165	P2776567	0.5 - 10.0	165	28	M10	45	ER16	4.60
	BT50AD/B-ER20-100	P2776568	0.5 - 13.0	100	34	M12	50	ER20	4.60
	BT50AD/B-ER20-135	P2776569	0.5 - 13.0	135	34	M12	50	ER20	4.80
	BT50AD/B-ER20-165	P2776570	0.5 - 13.0	165	34	M12	50	ER20	5.00
	BT50AD/B-ER25-100	P2776571	1.0 - 16.0	100	42	M12	65	ER25	4.70
	BT50AD/B-ER25-135	P2776572	1.0 - 16.0	135	42	M12	65	ER25	4.80
	BT50AD/B-ER25-165	P2776573	1.0 - 16.0	165	42	M12	65	ER25	5.00
	BT50AD/B-ER32-100	P2776574	1.0 - 20.0	100	50	M12	65	ER32	5.20
	BT50AD/B-ER32-135	P2776575	1.0 - 20.0	135	50	M12	65	ER32	5.70
	BT50AD/B-ER32-165	P2776576	1.0 - 20.0	165	50	M12	65	ER32	5.80
	BT50AD/B-ER40-100	P2776577	2.0 - 30.0	100	63	M12	75	ER40	5.60
	BT50AD/B-ER40-150	P2776578	2.0 - 30.0	150	63	M12	75	ER40	6.10
BT50AD/B-ER50-100	P2776579	4.0 - 34.0	100	78	M16	85	ER50	5.80	
BT50AD/B-ER50-150	P2776580	4.0 - 34.0	150	78	M16	85	ER50	6.30	

- ▶ Inch type products are available.
- ▶ For applicable ER collet, please refer to page D296~D304.
- ▶ For applicable ER nut, Sealing disk and Spanner, please refer to page D305~D309.

ER COLLET CHUCK

SPANN FUTTER-ER
MANDRIN À PINCES-ER
MANDRINO PORTA PINZE-ER
PORTAPINZAS-ER



Unit : mm										
TAPER No.	MODEL No.	EDP No.	CLAMPING RANGE	L	D	G	H	NUT / COLLET	WEIGHT (Kg)	
30	BT30-ER11-70	P2776802	0.5 - 7.0	70	19	M6	45	ER11	0.50	
	BT30-ER11-100	P2776803	0.5 - 7.0	100	19	M6	45	ER11	0.50	
	BT30-ER16-70	P2776804	0.5 - 10.0	70	28	M10	45	ER16	1.00	
	BT30-ER16-100	P2776805	0.5 - 10.0	100	28	M10	45	ER16	1.10	
	BT30-ER20-80	P2776806	0.5 - 13.0	80	34	M12	50	ER20	1.20	
	BT30-ER20-100	P2776807	0.5 - 13.0	100	34	M12	50	ER20	1.30	
	BT30-ER25-70	P2776808	1.0 - 16.0	70	42	M12	65	ER25	1.20	
	BT30-ER25-100	P2776809	1.0 - 16.0	100	42	M12	65	ER25	1.30	
	BT30-ER32-60	P2776801	1.0 - 20.0	60	50	M12	65	ER32	1.40	
	BT30-ER32-90	P2776810	1.0 - 20.0	90	50	M12	65	ER32	1.90	
	40	BT40-ER11-75	P2772004	0.5 - 7.0	75	19	M6	45	ER11	1.00
		BT40-ER11-100	P2772005	0.5 - 7.0	100	19	M6	45	ER11	1.10
		BT40-ER16-75	P2772006	0.5 - 10.0	75	28	M10	45	ER16	1.10
		BT40-ER16-100	P2772001	0.5 - 10.0	100	28	M10	45	ER16	1.20
BT40-ER16-120		P2772007	0.5 - 10.0	120	28	M10	45	ER16	1.40	
BT40-ER20-75		P2772008	0.5 - 13.0	75	34	M12	50	ER20	1.40	
BT40-ER20-100		P2772009	0.5 - 13.0	100	34	M12	50	ER20	1.80	
BT40-ER20-135		P2772010	0.5 - 13.0	135	34	M12	50	ER20	2.20	
BT40-ER25-75		P2772011	1.0 - 16.0	75	42	M12	65	ER25	1.40	
BT40-ER25-100		P2772002	1.0 - 16.0	100	42	M12	65	ER25	1.80	
BT40-ER25-135		P2772012	1.0 - 16.0	135	42	M12	65	ER25	2.20	
BT40-ER25-150		P2772013	1.0 - 16.0	150	42	M12	65	ER25	2.40	
BT40-ER32-60		P2772014	1.0 - 20.0	60	50	M12	65	ER32	1.80	
BT40-ER32-100		P2772003	1.0 - 20.0	100	50	M12	65	ER32	2.20	
BT40-ER32-120	P2772015	1.0 - 20.0	120	50	M12	65	ER32	2.40		
BT40-ER32-150	P2772016	1.0 - 20.0	150	50	M12	65	ER32	2.60		
BT40-ER40-80	P2772017	2.0 - 30.0	80	63	M12	75	ER40	1.50		

- ▶ Inch type products are available.
- ▶ For applicable ER collet, please refer to page D296~D304.
- ▶ For applicable ER nut, Sealing disk and Spanner, please refer to page D305~D309.

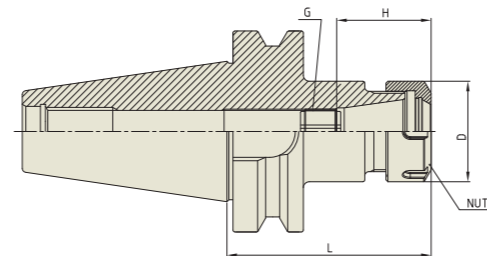
▶ NEXT PAGE

ER COLLET CHUCK

ER

ER COLLET CHUCK

SPANN FUTTER - ER
MANDRIN À PINCES - ER
MANDRINO PORTA PINZE - ER
PORTAPINZAS - ER



Unit : mm									
TAPER No.	MODEL No.	EDP No.	CLAMPING RANGE	L	D	G	H	NUT / COLLET	WEIGHT (Kg)
50	BT50-ER16-100	P2772018	0.5 - 10.0	100	28	M10	45	ER16	4.20
	BT50-ER16-120	P2772019	0.5 - 10.0	120	28	M10	45	ER16	4.40
	BT50-ER16-165	P2772020	0.5 - 10.0	165	28	M10	45	ER16	4.60
	BT50-ER20-100	P2772021	0.5 - 13.0	100	34	M12	50	ER20	4.60
	BT50-ER20-135	P2772022	0.5 - 13.0	135	34	M12	50	ER20	4.80
	BT50-ER20-165	P2772023	0.5 - 13.0	165	34	M12	50	ER20	5.00
	BT50-ER25-100	P2772024	1.0 - 16.0	100	42	M12	65	ER25	4.70
	BT50-ER25-135	P2772025	1.0 - 16.0	135	42	M12	65	ER25	4.80
	BT50-ER25-165	P2772026	1.0 - 16.0	165	42	M12	65	ER25	5.00
	BT50-ER32-100	P2772027	1.0 - 20.0	100	50	M12	65	ER32	5.20
	BT50-ER32-135	P2772028	1.0 - 20.0	135	50	M12	65	ER32	5.70
	BT50-ER32-165	P2772029	1.0 - 20.0	165	50	M12	65	ER32	5.80
	BT50-ER40-100	P2772030	2.0 - 30.0	100	63	M12	75	ER40	5.60
	BT50-ER40-150	P2772031	2.0 - 30.0	150	63	M12	75	ER40	6.10
	BT50-ER50-100	P2772032	4.0 - 34.0	100	78	M16	85	ER50	5.80
	BT50-ER50-150	P2772033	4.0 - 34.0	150	78	M16	85	ER50	6.30

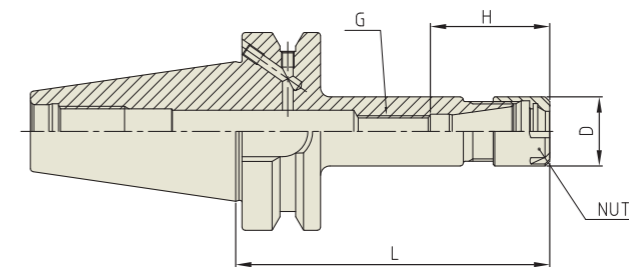
- ▶ Inch type products are available.
- ▶ For applicable ER collet, please refer to page D296~D304.
- ▶ For applicable ER nut, Sealing disk and Spanner, please refer to page D305~D309.

ER COLLET CHUCK

ERM

ER COLLET CHUCK (SLIM)

SPANN FUTTER - ER
MANDRIN À PINCES - ER
MANDRINO PORTA PINZE - ER
PORTAPINZAS - ER



Unit : mm									
TAPER No.	MODEL No.	EDP No.	CLAMPING RANGE	L	D	G	H	NUT / COLLET	WEIGHT (Kg)
40	BT40AD/B-ER11M-60	P2802735	0.5 - 7.0	60	16	M6	29.5	ER11M / ER11	1.00
	BT40AD/B-ER11M-90	P2802736	0.5 - 7.0	90	16	M6	29.5	ER11M / ER11	1.10
	BT40AD/B-ER11M-135	P2802737	0.5 - 7.0	135	16	M6	29.5	ER11M / ER11	1.20
	BT40AD/B-ER16M-60	P2802738	0.5 - 10.0	60	22	M10	38	ER16M / ER16	1.10
	BT40AD/B-ER16M-90	P2802739	0.5 - 10.0	90	22	M10	38	ER16M / ER16	1.20
	BT40AD/B-ER16M-135	P2802740	0.5 - 10.0	135	22	M10	38	ER16M / ER16	1.40
	BT40AD/B-ER20M-60	P2802741	0.5 - 13.0	60	28	M12	44.5	ER20M / ER20	1.10
	BT40AD/B-ER20M-90	P2802742	0.5 - 13.0	90	28	M12	44.5	ER20M / ER20	1.50
	BT40AD/B-ER20M-150	P2802743	0.5 - 13.0	150	28	M12	44.5	ER20M / ER20	1.80
	BT40AD/B-ER25M-60	P2802744	1.0 - 16.0	60	35	M12	52	ER25M / ER25	1.20
	BT40AD/B-ER25M-90	P2802745	1.0 - 16.0	90	35	M12	52	ER25M / ER25	1.40
	BT40AD/B-ER25M-150	P2802746	1.0 - 16.0	150	35	M12	52	ER25M / ER25	1.80
	BT50AD/B-ER11M-90	P2802747	0.5 - 7.0	90	16	M6	29.5	ER11M / ER11	3.80
	BT50AD/B-ER11M-120	P2802748	0.5 - 7.0	120	16	M6	29.5	ER11M / ER11	3.90
	BT50AD/B-ER11M-165	P2802749	0.5 - 7.0	165	16	M6	29.5	ER11M / ER11	4.00
	BT50AD/B-ER16M-90	P2802750	0.5 - 10.0	90	22	M10	38	ER16M / ER16	3.80
BT50AD/B-ER16M-120	P2802751	0.5 - 10.0	120	22	M10	38	ER16M / ER16	4.00	
BT50AD/B-ER16M-165	P2802752	0.5 - 10.0	165	22	M10	38	ER16M / ER16	4.20	
BT50AD/B-ER20M-75	P2802753	0.5 - 13.0	75	28	M12	44.5	ER20M / ER20	3.80	
BT50AD/B-ER20M-105	P2802754	0.5 - 13.0	105	28	M12	44.5	ER20M / ER20	3.90	
BT50AD/B-ER20M-165	P2802755	0.5 - 13.0	165	28	M12	44.5	ER20M / ER20	4.50	
BT50AD/B-ER25M-75	P2802756	1.0 - 16.0	75	35	M12	52	ER25M / ER25	3.90	
BT50AD/B-ER25M-105	P2802757	1.0 - 16.0	105	35	M12	52	ER25M / ER25	4.10	

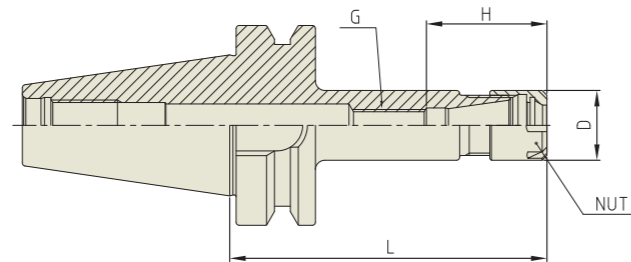
- ▶ Balancing grade G2.5 at 25,000RPM or U max. < 1gmm.
- ▶ For applicable ER collet please refer to page D296~D304.
- ▶ For applicable ER nut, Sealing disk, please refer to page D307 & D309.

YG ER COLLET CHUCK

ER

ER COLLET CHUCK (SLIM)

SPANN FUTTER - ER
MANDRIN À PINCES - ER
MANDRINO PORTA PINZE - ER
PORTAPINZAS - ER



Unit : mm									
TAPER No.	MODEL No.	EDP No.	CLAMPING RANGE	L	D	G	H	NUT / COLLET	WEIGHT (Kg)
30	BT30-ER11M-50	P2802601	0.5 - 7.0	50	16	M6	29.5	ER11M / ER11	0.50
	BT30-ER11M-75	P2802602	0.5 - 7.0	75	16	M6	29.5	ER11M / ER11	0.50
	BT30-ER11M-100	P2802603	0.5 - 7.0	100	16	M6	29.5	ER11M / ER11	0.60
	BT30-ER16M-50	P2802604	0.5 - 10.0	50	22	M10	38	ER16M / ER16	0.50
	BT30-ER16M-75	P2802605	0.5 - 10.0	75	22	M10	38	ER16M / ER16	0.50
	BT30-ER16M-100	P2802606	0.5 - 10.0	100	22	M10	38	ER16M / ER16	0.60
	BT30-ER20M-50	P2802607	0.5 - 13.0	50	28	M12	44.5	ER20M / ER20	0.50
	BT30-ER20M-75	P2802608	0.5 - 13.0	75	28	M12	44.5	ER20M / ER20	0.60
	BT30-ER20M-100	P2802609	0.5 - 13.0	100	28	M12	44.5	ER20M / ER20	0.70
	BT30-ER25M-50	P2802610	1.0 - 16.0	50	35	M12	52	ER25M / ER25	0.60
	BT30-ER25M-75	P2802611	1.0 - 16.0	75	35	M12	52	ER25M / ER25	0.70
	BT30-ER25M-100	P2802612	1.0 - 16.0	100	35	M12	52	ER25M / ER25	0.80
40	BT40-ER11M-60	P2802613	0.5 - 7.0	60	16	M6	29.5	ER11M / ER11	1.00
	BT40-ER11M-90	P2802614	0.5 - 7.0	90	16	M6	29.5	ER11M / ER11	1.10
	BT40-ER11M-135	P2802615	0.5 - 7.0	135	16	M6	29.5	ER11M / ER11	1.20
	BT40-ER16M-60	P2802616	0.5 - 10.0	60	22	M10	38	ER16M / ER16	1.10
	BT40-ER16M-90	P2802617	0.5 - 10.0	90	22	M10	38	ER16M / ER16	1.20
	BT40-ER16M-135	P2802618	0.5 - 10.0	135	22	M10	38	ER16M / ER16	1.40
	BT40-ER20M-60	P2802619	0.5 - 13.0	60	28	M12	44.5	ER20M / ER20	1.10
	BT40-ER20M-90	P2802620	0.5 - 13.0	90	28	M12	44.5	ER20M / ER20	1.50
	BT40-ER20M-150	P2802621	0.5 - 13.0	150	28	M12	44.5	ER20M / ER20	1.80
	BT40-ER25M-60	P2802622	1.0 - 16.0	60	35	M12	52	ER25M / ER25	1.20
	BT40-ER25M-90	P2802623	1.0 - 16.0	90	35	M12	52	ER25M / ER25	1.40
	BT40-ER25M-150	P2802624	1.0 - 16.0	150	35	M12	52	ER25M / ER25	1.80
50	BT50-ER11M-90	P2802625	0.5 - 7.0	90	16	M6	29.5	ER11M / ER11	3.80
	BT50-ER11M-120	P2802626	0.5 - 7.0	120	16	M6	29.5	ER11M / ER11	3.90
	BT50-ER11M-165	P2802627	0.5 - 7.0	165	16	M6	29.5	ER11M / ER11	4.00
	BT50-ER16M-90	P2802628	0.5 - 10.0	90	22	M10	38	ER16M / ER16	3.80
	BT50-ER16M-120	P2802629	0.5 - 10.0	120	22	M10	38	ER16M / ER16	4.00
	BT50-ER16M-165	P2802630	0.5 - 10.0	165	22	M10	38	ER16M / ER16	4.20
	BT50-ER20M-75	P2802631	0.5 - 13.0	75	28	M12	44.5	ER20M / ER20	3.80
	BT50-ER20M-105	P2802632	0.5 - 13.0	105	28	M12	44.5	ER20M / ER20	3.90
	BT50-ER20M-165	P2802633	0.5 - 13.0	165	28	M12	44.5	ER20M / ER20	4.50
	BT50-ER25M-75	P2802634	1.0 - 16.0	75	35	M12	52	ER25M / ER25	3.90
	BT50-ER25M-105	P2802635	1.0 - 16.0	105	35	M12	52	ER25M / ER25	4.10

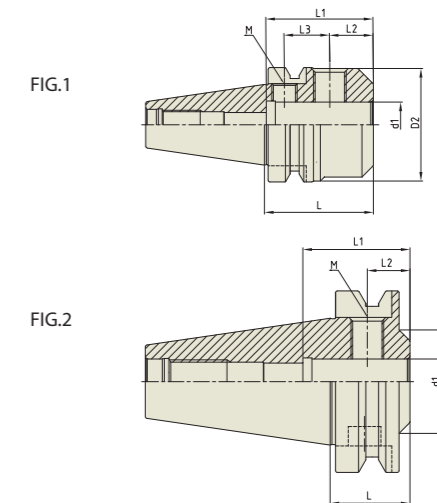
- ▶ Inch type products are available.
- ▶ For applicable ER collet, please refer to page D296~D304.
- ▶ For applicable ER nut, Sealing disk and Spanner, please refer to page D307 & D309.

YG END MILL HOLDER

EMH

END MILL HOLDER (SHORT TYPE)

FRÄSERFUTTER UND FLÄCHENSPANNFUTTER
MANDRIN PORTE FRAISE À QUEUE CYLINDRIQUE, À MÉPLAT
MANDRINI PORTA FRESA TIPO WELDON
PORTAFRESAS Y EJES DE SUJECCION LATERAL

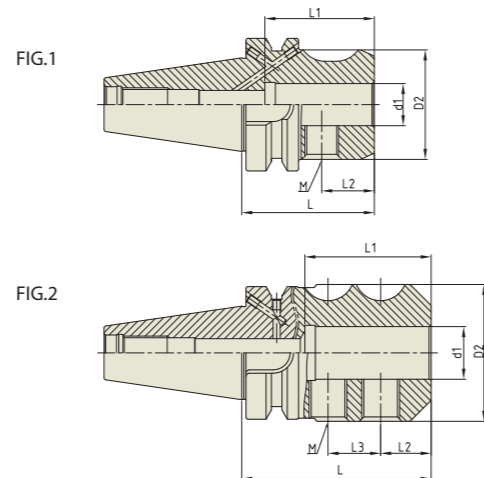


Unit : mm											
TAPER No.	MODEL No.	EDP No.	d1	D2	L	L1	L2	L3	M	FIG.	WEIGHT (Kg)
40	BT40-EMH25-60	P2773085	25	62	60	59	24	25	M18/M14	1	1.50
	BT40-EMH32-65	P2773086	32	62	65	63	24	28	M20/M14	1	1.45
50	BT50-EMH25-44	P2773087	25	57	44	59	24	-	M18	2	3.45
	BT50-EMH32-60	P2773088	32	72	60	63	24	28	M20/M14	1	3.80

- ▶ Inch type products are available.

END MILL HOLDER

FRÄSERFUTTER UND FLÄCHENSPANNFUTTER
 MANDRIN PORTE FRAISE À QUEUE CYLINDRIQUE, À MÉPLAT
 MANDRINI PORTA FRESA TIPO WELDON
 PORTAFRESAS Y EJES DE SUJECCION LATERAL



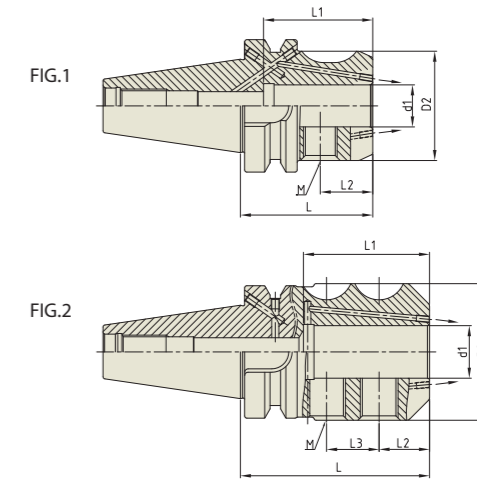
Unit : mm

TAPER No.	MODEL No.	EDP No.	d1	D2	L	L1	L2	L3	M	FIG.	WEIGHT (Kg)
30	BT30-EMH6-50	P2772951A	6	25	50	37	18	-	M6	1	0.47
	BT30-EMH8-50	P2772952A	8	28	50	37	18	-	M8	1	0.49
	BT30-EMH10-50	P2772953A	10	35	50	41	20	-	M10	1	0.55
	BT30-EMH12-55	P2772954A	12	42	55	46	22.5	-	M12	1	0.67
	BT30-EMH14-55	P2772955A	14	44	55	46	22.5	-	M12	1	0.68
	BT30-EMH16-63	P2772956A	16	48	63	54	24	-	M14	1	0.83
	BT30-EMH18-63	P2772958A	18	50	63	49	24	-	M14	1	0.85
	BT30-EMH20-70	P2772957A	20	52	70	48	25	-	M16	1	0.98
40	BT40AD/B-EMH6-50	P2773061	6	25	50	35	18	-	M6	1	1.00
	BT40AD/B-EMH8-50	P2773062	8	28	50	37	18	-	M8	1	1.00
	BT40AD/B-EMH10-63	P2773063	10	35	63	39	20	-	M10	1	1.10
	BT40AD/B-EMH12-63	P2773064	12	42	63	44	22.5	-	M12	1	1.30
	BT40AD/B-EMH14-63	P2773065	14	44	63	49	22.5	-	M12	1	1.40
	BT40AD/B-EMH16-63	P2773066	16	48	63	52	24	-	M14	1	1.70
	BT40AD/B-EMH18-63	P2773067	18	50	63	52	24	-	M14	1	1.70
	BT40AD/B-EMH20-63	P2773068	20	52	63	52	25	-	M16	1	1.80
	BT40AD/B-EMH25-90	P2773069	25	65	90	60	24	25	M18	2	1.80
	BT40AD/B-EMH32-100	P2773070	32	72	100	64	24	28	M20	2	2.00
50	BT50AD/B-EMH6-63	P2773071	6	25	63	35	18	-	M6	1	3.30
	BT50AD/B-EMH8-63	P2773072	8	28	63	35	18	-	M8	1	3.60
	BT50AD/B-EMH10-65	P2773073	10	35	65	39	20	-	M10	1	3.80
	BT50AD/B-EMH12-80	P2773074	12	42	80	46	22.5	-	M12	1	3.80
	BT40AD/B-EMH14-80	P2773075	14	44	80	46	22.5	-	M12	1	4.00
	BT50AD/B-EMH16-80	P2773076	16	48	80	49	24	-	M14	1	4.00
	BT50AD/B-EMH18-80	P2773077	18	50	80	49	24	-	M14	1	4.20
	BT50AD/B-EMH20-80	P2773078	20	52	80	52	25	-	M16	1	4.20
	BT50AD/B-EMH25-100	P2773079	25	65	100	60	24	25	M18	2	4.60
	BT50AD/B-EMH32-105	P2773080	32	72	105	64	24	28	M20	2	4.70
	BT50AD/B-EMH40-120	P2773081	40	80	120	73	30	32	M20	2	4.90

- ▶ Inch type products are available.
- ▶ Standard End Mill Holder is for a cutting tool with Weldon shank and End Mill Holder for a cutting tool with Whistle notch is available upon request.
- ▶ Combi-style Holder with ball jointed clamping screw which can be used with cutting tools with Weldon and Whistle notch shank is available.
- ▶ Balancing grade G2.5 at 25,000RPM or U max. < 1gmm.

END MILL HOLDER (COOLANT CHANNEL)

FRÄSERFUTTER UND FLÄCHENSPANNFUTTER
 MANDRIN PORTE FRAISE À QUEUE CYLINDRIQUE, À MÉPLAT
 MANDRINI PORTA FRESA TIPO WELDON
 PORTAFRESAS Y EJES DE SUJECCION LATERAL



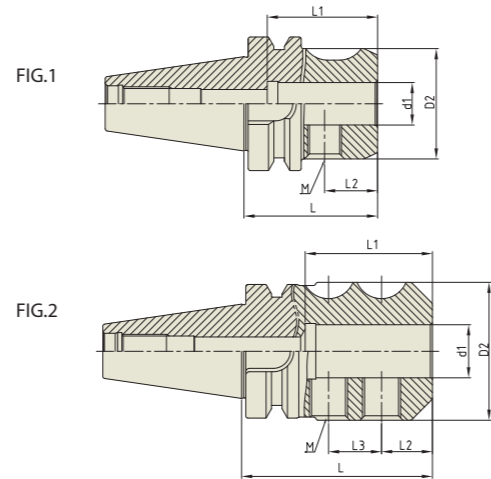
Unit : mm

TAPER No.	MODEL No.	EDP No.	d1	D2	L	L1	L2	L3	M	FIG.	WEIGHT (Kg)
40	BT40AD/B-EMH6C-50	P2772991	6	25	50	35	18	-	M6	1	1.00
	BT40AD/B-EMH8C-50	P2772992	8	28	50	35	18	-	M8	1	1.00
	BT40AD/B-EMH10C-63	P2772993	10	35	63	39	20	-	M10	1	1.10
	BT40AD/B-EMH12C-63	P2772994	12	42	63	44	22.5	-	M12	1	1.30
	BT40AD/B-EMH14C-63	P2772995	14	44	63	49	22.5	-	M12	1	1.40
	BT40AD/B-EMH16C-63	P2772996	16	48	63	52	24	-	M14	1	1.70
	BT40AD/B-EMH18C-63	P2772997	18	50	63	50	24	-	M14	1	1.70
	BT40AD/B-EMH20C-63	P2772998	20	52	63	52	25	-	M16	1	1.80
	BT40AD/B-EMH25C-90	P2772999	25	65	90	60	24	25	M18	2	1.80
	BT40AD/B-EMH32C-100	P2773000	32	72	100	64	24	28	M20	2	2.00
50	BT50AD/B-EMH6C-63	P2773012	6	25	63	35	18	-	M6	1	3.30
	BT50AD/B-EMH8C-63	P2773013	8	28	63	35	18	-	M8	1	3.60
	BT50AD/B-EMH10C-65	P2773014	10	35	65	39	20	-	M10	1	3.80
	BT50AD/B-EMH12C-80	P2773015	12	42	80	46	22.5	-	M12	1	3.80
	BT40AD/B-EMH14C-80	P2773016	14	44	80	46	22.5	-	M12	1	4.00
	BT50AD/B-EMH16C-80	P2773017	16	48	80	49	24	-	M14	1	4.00
	BT50AD/B-EMH18C-80	P2773018	18	50	80	49	24	-	M14	1	4.20
	BT50AD/B-EMH20C-80	P2773019	20	52	80	52	25	-	M16	1	4.20
	BT50AD/B-EMH25C-100	P2773020	25	65	100	60	24	25	M18	2	4.60
	BT50AD/B-EMH32C-105	P2773021	32	72	105	64	24	28	M20	2	4.70
	BT50AD/B-EMH40C-120	P2773022	40	80	120	74	30	32	M20	2	4.90

- ▶ Inch type products are available.
- ▶ Standard End Mill Holder is for a cutting tool with Weldon shank and End Mill Holder for a cutting tool with Whistle notch is available upon request.
- ▶ Combi-style Holder with ball jointed clamping screw which can be used with cutting tools with Weldon and Whistle notch shank is available.
- ▶ Balancing grade G2.5 at 25,000RPM or U max. < 1gmm.

END MILL HOLDER

FRÄSERFUTTER UND FLÄCHENSPANNFUTTER
 MANDRIN PORTE FRAISE À QUEUE CYLINDRIQUE, À MÉPLAT
 MANDRINI PORTA FRESA TIPO WELDON
 PORTAFRESAS Y EJES DE SUJECCION LATERAL

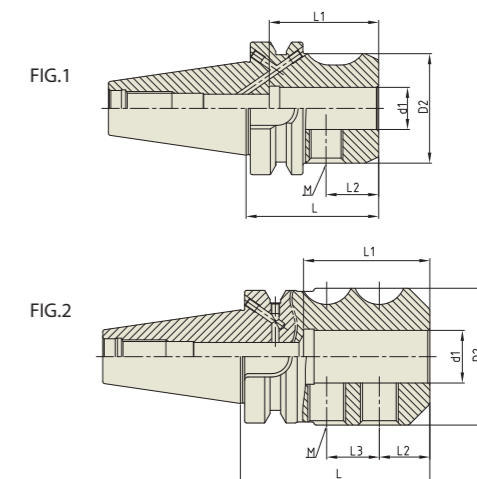


Unit : mm												
TAPER No.	MODEL No.	EDP No.	d1	D2	L	L1	L2	L3	M	FIG.	WEIGHT (Kg)	
30	BT30-EMH6-50	P2772951A	6	25	50	37	18	-	M6	1	0.47	
	BT30-EMH8-50	P2772952A	8	28	50	37	18	-	M8	1	0.49	
	BT30-EMH10-50	P2772953A	10	35	50	41	20	-	M10	1	0.55	
	BT30-EMH12-55	P2772954A	12	42	55	46	22.5	-	M12	1	0.67	
	BT30-EMH14-55	P2772955A	14	44	55	46	22.5	-	M12	1	0.68	
	BT30-EMH16-63	P2772956A	16	48	63	54	24	-	M14	1	0.83	
	BT30-EMH18-63	P2772958A	18	50	63	49	24	-	M14	1	0.85	
	BT30-EMH20-70	P2772957A	20	52	70	48	25	-	M16	1	0.98	
40	BT40-EMH6-50	P2773061	6	25	50	35	18	-	M6	1	1.00	
	BT40-EMH8-50	P2773062	8	28	50	37	18	-	M8	1	1.00	
	BT40-EMH10-63	P2773063	10	35	63	39	20	-	M10	1	1.10	
	BT40-EMH12-63	P2773064	12	42	63	44	22.5	-	M12	1	1.30	
	BT40-EMH14-63	P2773065	14	44	63	49	22.5	-	M12	1	1.40	
	BT40-EMH16-63	P2773066	16	48	63	52	24	-	M14	1	1.70	
	BT40-EMH18-63	P2773067	18	50	63	52	24	-	M14	1	1.70	
	BT40-EMH20-63	P2773068	20	52	63	52	25	-	M16	1	1.80	
	BT40-EMH25-90	P2773069	25	65	90	60	24	25	M18	2	1.80	
	BT40-EMH32-100	P2773070	32	72	100	64	24	28	M20	2	2.00	
	50	BT50-EMH6-63	P2773071	6	25	63	35	18	-	M6	1	3.30
		BT50-EMH8-63	P2773072	8	28	63	35	18	-	M8	1	3.60
BT50-EMH10-65		P2773073	10	35	65	39	20	-	M10	1	3.80	
BT50-EMH12-80		P2773074	12	42	80	46	22.5	-	M12	1	3.80	
BT40-EMH14-80		P2773075	14	44	80	46	22.5	-	M12	1	4.00	
BT50-EMH16-80		P2773076	16	48	80	49	24	-	M14	1	4.00	
BT50-EMH18-80		P2773077	18	50	80	49	24	-	M14	1	4.20	
BT50-EMH20-80		P2773078	20	52	80	52	25	-	M16	1	4.20	
BT50-EMH25-100		P2773079	25	65	100	60	24	25	M18	2	4.60	
BT50-EMH32-105		P2773080	32	72	105	64	24	28	M20	2	4.70	
BT50-EMH40-120		P2773081	40	80	120	73	30	32	M20	2	4.90	

- ▶ Inch type products are available.
- ▶ Standard End Mill Holder is for a cutting tool with Weldon shank and End Mill Holder for a cutting tool with Whistle notch is available upon request.
- ▶ Combi-style Holder with ball jointed clamping screw which can be used with cutting tools with Weldon and Whistle notch shank is available.

END MILL HOLDER

FRÄSERFUTTER UND FLÄCHENSPANNFUTTER
 MANDRIN PORTE FRAISE À QUEUE CYLINDRIQUE, À MÉPLAT
 MANDRINI PORTA FRESA TIPO WELDON
 PORTAFRESAS Y EJES DE SUJECCION LATERAL

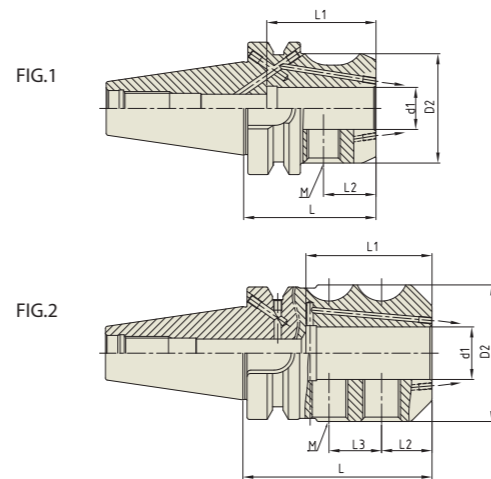


Unit : mm											
TAPER No.	MODEL No.	EDP No.	d1	D2	L	L1	L2	L3	M	FIG.	WEIGHT (Kg)
40	BT40AD/B-EMH6-50	P2773031	6	25	50	35	18	-	M6	1	1.00
	BT40AD/B-EMH8-50	P2773032	8	28	50	37	18	-	M8	1	1.00
	BT40AD/B-EMH10-63	P2773033	10	35	63	39	20	-	M10	1	1.10
	BT40AD/B-EMH12-63	P2773034	12	42	63	44	22.5	-	M12	1	1.30
	BT40AD/B-EMH14-63	P2773035	14	44	63	49	22.5	-	M12	1	1.40
	BT40AD/B-EMH16-63	P2773036	16	48	63	52	24	-	M14	1	1.70
	BT40AD/B-EMH18-63	P2773037	18	50	63	52	24	-	M14	1	1.70
	BT40AD/B-EMH20-63	P2773038	20	52	63	52	25	-	M16	1	1.80
	BT40AD/B-EMH25-90	P2773039	25	65	90	60	24	25	M18	2	1.80
	BT40AD/B-EMH32-100	P2773040	32	72	100	64	24	28	M20	2	2.00
50	BT50AD/B-EMH6-63	P2773041	6	25	63	35	18	-	M6	1	3.30
	BT50AD/B-EMH8-63	P2773042	8	28	63	35	18	-	M8	1	3.60
	BT50AD/B-EMH10-65	P2773043	10	35	65	39	20	-	M10	1	3.80
	BT50AD/B-EMH12-80	P2773044	12	42	80	46	22.5	-	M12	1	3.80
	BT40AD/B-EMH14-80	P2773045	14	44	80	46	22.5	-	M12	1	4.00
	BT50AD/B-EMH16-80	P2773046	16	48	80	49	24	-	M14	1	4.00
	BT50AD/B-EMH18-80	P2773047	18	50	80	49	24	-	M14	1	4.20
	BT50AD/B-EMH20-80	P2773048	20	52	80	52	25	-	M16	1	4.20
	BT50AD/B-EMH25-100	P2773049	25	65	100	60	24	25	M18	2	4.60
	BT50AD/B-EMH32-105	P2773050	32	72	105	64	24	28	M20	2	4.70
BT50AD/B-EMH40-120	P2773051	40	80	120	73	30	32	M20	2	4.90	

- ▶ Inch type products are available.
- ▶ Standard End Mill Holder is for a cutting tool with Weldon shank and End Mill Holder for a cutting tool with Whistle notch is available upon request.
- ▶ Combi-style Holder with ball jointed clamping screw which can be used with cutting tools with Weldon and Whistle notch shank is available.

END MILL HOLDER (COOLANT CHANNEL)

FRÄSERFUTTER UND FLÄCHENSPANNFUTTER
 MANDRIN PORTE FRAISE À QUEUE CYLINDRIQUE, À MÉPLAT
 MANDRINI PORTA FRESA TIPO WELDON
 PORTAFRESAS Y EJES DE SUJECCION LATERAL



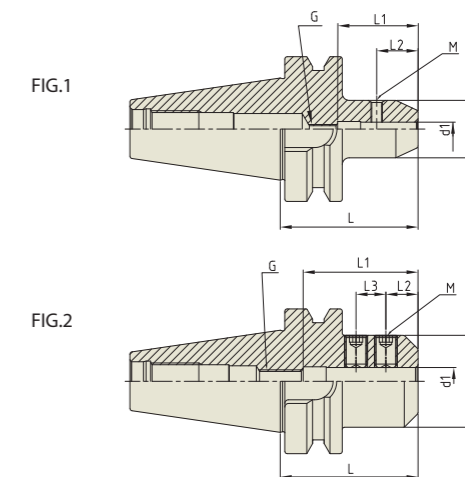
Unit : mm

TAPER No.	MODEL No.	EDP No.	d1	D2	L	L1	L2	L3	M	FIG.	WEIGHT (Kg)
40	BT40AD/B-EMH6C-50	P2772991	6	25	50	35	18	-	M6	1	1.00
	BT40AD/B-EMH8C-50	P2772992	8	28	50	35	18	-	M8	1	1.00
	BT40AD/B-EMH10C-63	P2772993	10	35	63	39	20	-	M10	1	1.10
	BT40AD/B-EMH12C-63	P2772994	12	42	63	44	22.5	-	M12	1	1.30
	BT40AD/B-EMH14C-63	P2772995	14	44	63	49	22.5	-	M12	1	1.40
	BT40AD/B-EMH16C-63	P2772996	16	48	63	52	24	-	M14	1	1.70
	BT40AD/B-EMH18C-63	P2772997	18	50	63	50	24	-	M14	1	1.70
	BT40AD/B-EMH20C-63	P2772998	20	52	63	52	25	-	M16	1	1.80
	BT40AD/B-EMH25C-90	P2772999	25	65	90	60	24	25	M18	2	1.80
	BT40AD/B-EMH32C-100	P2773000	32	72	100	64	24	28	M20	2	2.00
50	BT50AD/B-EMH6C-63	P2773012	6	25	63	35	18	-	M6	1	3.30
	BT50AD/B-EMH8C-63	P2773013	8	28	63	35	18	-	M8	1	3.60
	BT50AD/B-EMH10C-65	P2773014	10	35	65	39	20	-	M10	1	3.80
	BT50AD/B-EMH12C-80	P2773015	12	42	80	46	22.5	-	M12	1	3.80
	BT50AD/B-EMH14C-80	P2773016	14	44	80	46	22.5	-	M12	1	4.00
	BT50AD/B-EMH16C-80	P2773017	16	48	80	49	24	-	M14	1	4.00
	BT50AD/B-EMH18C-80	P2773018	18	50	80	49	24	-	M14	1	4.20
	BT50AD/B-EMH20C-80	P2773019	20	52	80	52	25	-	M16	1	4.20
	BT50AD/B-EMH25C-100	P2773020	25	65	100	60	24	25	M18	2	4.60
	BT50AD/B-EMH32C-105	P2773021	32	72	105	64	24	28	M20	2	4.70
	BT50AD/B-EMH40C-120	P2773022	40	80	120	74	30	32	M20	2	4.90

- ▶ Inch type products are available.
- ▶ Standard End Mill Holder is for a cutting tool with Weldon shank and End Mill Holder for a cutting tool with Whistle notch is available upon request.
- ▶ Combi-style Holder with ball jointed clamping screw which can be used with cutting tools with Weldon and Whistle notch shank is available.

SIDE LOCK ARBOR

FRÄSERFUTTER UND FLÄCHENSPANNFUTTER
 MANDRIN PORTE FRAISE À QUEUE CYLINDRIQUE, À MÉPLAT
 MANDRINI PORTA FRESA TIPO WELDON
 PORTAFRESAS Y EJES DE SUJECCION LATERAL



Unit : mm

TAPER No.	MODEL No.	EDP No.	d1	D2	L	L1	L2	L3	M	G	FIG.	WEIGHT (Kg)
30	BT30-SLA6-60	P2780201	6	25	60	35	18	-	M5	M5	1	0.70
	BT30-SLA8-60	P2780202	8	28	60	35	18	-	M6	M6	1	0.80
	BT30-SLA10-60	P2780203	10	35	60	50	14	13	M8	M8	2	0.90
	BT30-SLA12-60	P2780204	12	40	60	50	14	13	M10	M10	2	1.10
	BT30-SLA14-60	P2780205	14	40	60	50	14	13	M10	M10	2	1.20
	BT30-SLA16-75	P2780206	16	40	75	70	25	20	M12	M12	2	1.30
	BT30-SLA20-75	P2780207	20	50	75	70	25	20	M12	M12	2	1.40
	BT30-SLA25-75	P2780208	25	50	75	70	25	20	M14	M12	2	1.50
	BT30-SLA32-105	P2780209	32	60	105	80	25	25	M16	M12	2	1.60
	BT40-SLA6-60	P2780210	6	25	60	35	18	-	M5	M5	1	1.10
40	BT40-SLA8-60	P2780211	8	28	60	35	18	-	M6	M6	1	1.10
	BT40-SLA10-60	P2780212	10	35	60	50	14	13	M8	M8	2	1.20
	BT40-SLA12-60	P2780213	12	40	60	50	14	13	M10	M10	2	1.40
	BT40-SLA16-90	P2780214	16	40	90	70	25	20	M12	M12	2	1.50
	BT40-SLA20-90	P2780215	20	50	90	70	25	20	M12	M12	2	1.80
	BT40-SLA25-90	P2780216	25	50	90	70	25	20	M14	M12	2	1.70
	BT40-SLA32-90	P2780217	32	60	90	80	25	25	M16	M12	2	1.90
	BT40-SLA40-90	P2780218	40	63	90	80	25	25	M16	M12	2	1.80
	BT40-SLA42-90	P2780219	42	63	90	80	25	25	M16	M12	2	1.80
	BT50-SLA6-90	P2780220	6	25	90	40	18	-	M5	M5	1	3.70
50	BT50-SLA8-90	P2780221	8	28	90	40	18	-	M6	M6	1	3.90
	BT50-SLA10-90	P2780222	10	35	90	50	15	15	M8	M8	2	4.10
	BT50-SLA12-90	P2780223	12	40	90	55	15	15	M10	M10	2	4.30
	BT50-SLA14-90	P2780224	14	40	90	55	15	15	M10	M10	2	4.30
	BT50-SLA16-105	P2780225	16	40	105	70	25	20	M12	M12	2	4.40
	BT50-SLA20-105	P2780226	20	50	105	70	25	20	M12	M12	2	4.80
	BT50-SLA25-105	P2780227	25	50	105	70	25	20	M14	M12	2	4.70
	BT50-SLA32-105	P2780228	32	60	105	80	25	25	M16	M12	2	4.00
	BT50-SLA40-105	P2780229	40	70	105	80	25	25	M16	M12	2	4.50
	BT50-SLA42-105	P2780230	42	70	105	80	25	25	M16	M12	2	4.70
BT50-SLA50.8-121	P2780231	50.8	95	121	87	33.9	35.8	M20	-	2	5.00	

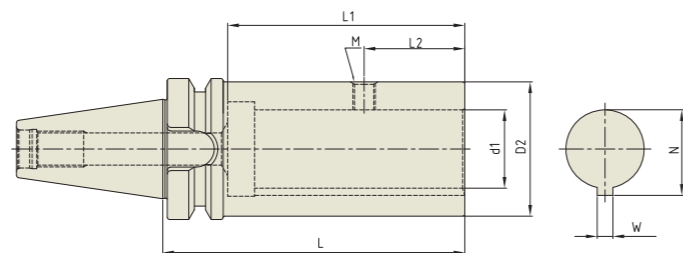
- ▶ Inch type products are available.
- ▶ Standard design of Side Lock Arbor is for cutting tools with straight shank having flat face.
- ▶ Side Lock Arbor is Non-Balancing.

YG SIDE LOCK ARBOR

SLB

SIDE LOCK ARBOR

FRÄSERFUTTER UND FLÄCHENSPANNFUTTER
MANDRIN PORTE FRAISE À QUEUE CYLINDRIQUE, À MÉPLAT
MANDRINI PORTA FRESA TIPO WELDON
PORTAFRESAS Y EJES DE SUJECCION LATERAL



Unit : mm

TAPER No.	MODEL No.	EDP No.	d1	D2	L	L1	L2	M	N	W	WEIGHT (Kg)
40	BT40-SLB26-105	P2778051	26	50	105	85	40	M10	28.2	5	1.30
	BT40-SLB35-135	P2778052	35	60	135	105	55	M10	37.6	6	2.20
	BT40-SLB35T-135	P2778053	35	60	135	105	55	M10	38.2	7	2.20
50	BT50-SLB26-105	P2778054	26	50	105	85	40	M10	28.2	5	1.30
	BT50-SLB35-135	P2778055	35	60	135	106	55	M10	37.6	6	2.20
	BT50-SLB35T-135	P2778056	35	60	135	106	55	M10	38.2	7	2.20
	BT50-SLB48-165	P2778057	48	80	165	129	65	M10	51	8	3.80

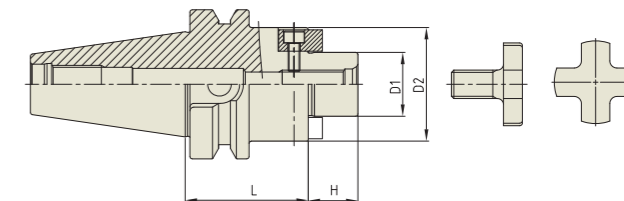
- ▶ Inch type products are available.
- ▶ Standard design of Side Lock Arbor is for cutting tools with straight shank having flat face.
- ▶ Side Lock Arbor is Non-Balancing.

YG SHELL MILL ARBOR

SMA

SHELL MILL ARBOR

FRÄSERFUTTER UND FLÄCHENSPANNFUTTER
MANDRIN PORTE FRAISE À QUEUE CYLINDRIQUE, À MÉPLAT
MANDRINI PORTA FRESA TIPO WELDON
PORTAFRESAS Y EJES DE SUJECCION LATERAL



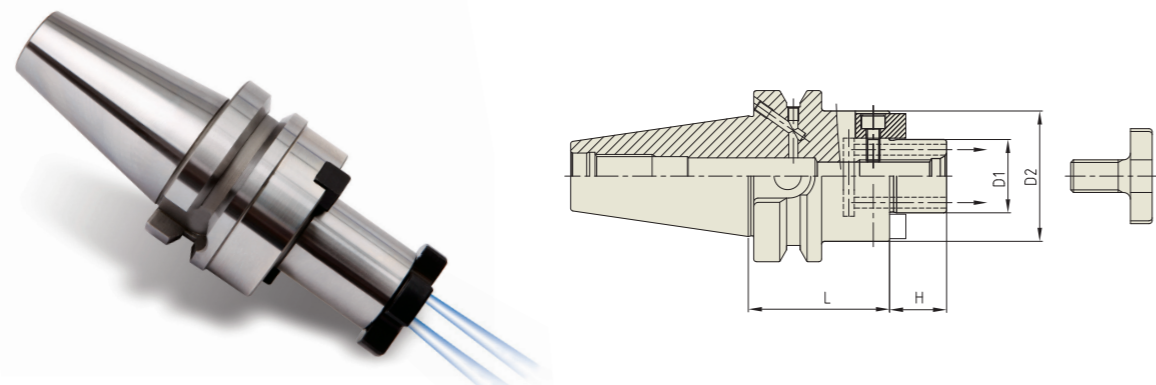
Unit : mm

TAPER No.	MODEL No.	EDP No.	D1	D2	L	H	BOLT	WEIGHT (Kg)
30	BT30-SMA16-50	P2778801	16	32	50	17	M8x16L	0.58
	BT30-SMA22-50	P2778802	22	40	50	19	M10x18L	0.70
	BT30-SMA27-50	P2778803	27	48	50	21	M12x22L	0.85
40	BT40-SMA16-60	P2778804	16	32	60	17	M8x16L	1.17
	BT40-SMA16-120	P2778815	16	32	120	17	M8x16L	1.50
	BT40-SMA22-60	P2778805	22	40	60	19	M10x18L	1.31
	BT40-SMA22-120	P2778816	22	40	120	19	M10x18L	1.85
	BT40-SMA27-60	P2778806	27	48	60	21	M12x22L	1.48
	BT40-SMA27-120	P2778817	27	48	120	21	M12x22L	2.27
	BT40-SMA32-60	P2778807	32	58	60	24	M16x26L	1.72
	BT40-SMA32-120	P2778818	32	58	120	24	M16x26L	2.90
	BT40-SMA40-60	P2778808	40	70	60	27	M20x30L	2.00
50	BT50-SMA16-75	P2778809	16	32	75	17	M8x16L	3.75
	BT50-SMA16-120	P2778819	16	32	120	17	M8x16L	4.03
	BT50-SMA22-75	P2778810	22	40	75	19	M10x18L	3.90
	BT50-SMA22-120	P2778820	22	40	120	19	M10x18L	4.25
	BT50-SMA27-75	P2778811	27	48	75	21	M12x22L	4.09
	BT50-SMA27-120	P2778821	27	48	120	21	M12x22L	4.56
	BT50-SMA32-75	P2778812	32	58	75	24	M16x26L	4.35
	BT50-SMA32-120	P2778822	32	58	120	24	M16x26L	5.22
	BT50-SMA40-75	P2778813	40	70	75	27	M20x30L	4.77
	BT50-SMA40-120	P2778823	40	70	120	27	M20x30L	6.04
	BT50-SMA50-75	P2778814	50	90	75	30	M24x36L	5.60

- ▶ Inch type products are available.
- ▶ For parts, please refer to page D311.

SHELL MILL ARBOR (COOLANT CHANNEL & SMALL FACE)

AUFNAHMEDORN FÜR FRÄSER MIT BOHRUNG
MANDRIN PORTE-FRAISES
MANDRINO CON TRASCINAMENTO FISSO
PORTA FRESAS

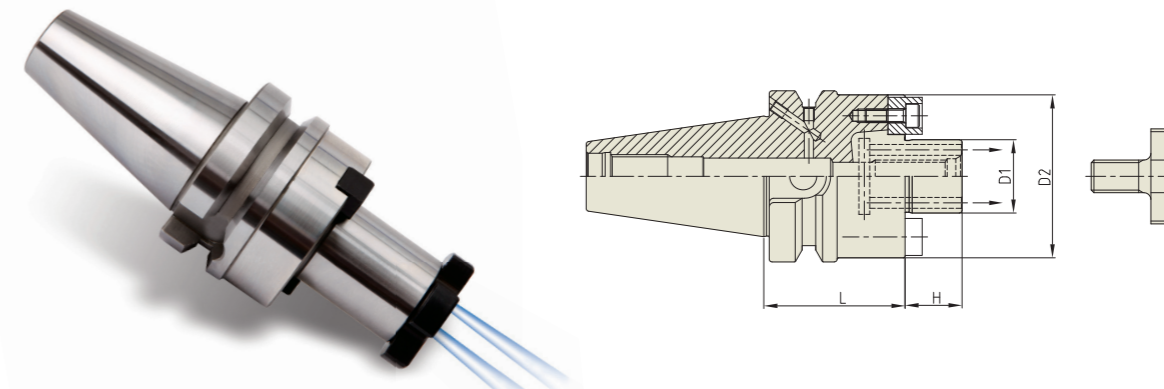


Unit : mm								
TAPER No.	MODEL No.	EDP No.	D1	D2	L	H	BOLT	WEIGHT (Kg)
30	BT30-SMA16C-40	P2803601C	16	32	40	17	M8x16L	0.55
	BT30-SMA22C-40	P2803602C	22	40	40	19	M10x18L	0.61
	BT30-SMA22C-100	P2803603C	22	40	100	19	M10x18L	1.18
	BT30-SMA27C-40	P2803604C	27	48	40	21	M12x22L	0.86
	BT30-SMA27C-100	P2803605C	27	48	100	21	M12x22L	1.67
40	BT40AD/B-SMA16C-60	P2801024C	16	32	60	17	M8x16L	1.00
	BT40AD/B-SMA22C-60	P2801025C	22	40	60	19	M10x18L	1.20
	BT40AD/B-SMA22C-100	P2803607C	22	40	100	19	M10x18L	1.65
	BT40AD/B-SMA27C-60	P2801026C	27	48	60	21	M12x22L	1.34
	BT40AD/B-SMA27C-100	P2803608C	27	48	100	21	M12x22L	1.99
	BT40AD/B-SMA32C-60	P2801027C	32	58	60	24	M16x26L	1.55
50	BT40AD/B-SMA40C-60	P2803610C	40	70	60	27	M20x30L	1.97
	BT50AD/B-SMA16C-75	P2801029C	16	32	75	17	M8x16L	3.00
	BT50AD/B-SMA16C-120	P2801039C	16	32	120	17	M8x16L	3.40
	BT50AD/B-SMA22C-75	P2801030C	22	40	75	19	M10x18L	3.72
	BT50AD/B-SMA22C-100	P2803614C	22	40	100	19	M10x18L	4.06
	BT50AD/B-SMA22C-120	P2801040C	22	40	120	19	M10x18L	4.40
	BT50AD/B-SMA22C-160	P2803616C	22	40	160	19	M10x18L	4.61
	BT50AD/B-SMA27C-75	P2801031C	27	48	75	21	M12x22L	3.87
	BT50AD/B-SMA27C-100	P2803618C	27	48	100	21	M12x22L	4.37
	BT50AD/B-SMA27C-120	P2801041C	27	48	120	21	M12x22L	4.68
	BT50AD/B-SMA27C-160	P2803620C	27	48	160	21	M12x22L	5.18
	BT50AD/B-SMA32C-75	P2801032C	32	58	75	24	M16x26L	4.08
	BT50AD/B-SMA32C-100	P2803622C	32	58	100	24	M16x26L	4.80
	BT50AD/B-SMA32C-120	P2801042C	32	58	120	24	M16x26L	5.40
	BT50AD/B-SMA32C-160	P2803624C	32	58	160	24	M16x26L	5.98
	BT50AD/B-SMA40C-75	P2801033C	40	70	75	27	M20x30L	4.41
BT50AD/B-SMA40C-100	P2803626C	40	70	100	27	M20x30L	5.45	
BT50AD/B-SMA40C-120	P2801043C	40	70	120	27	M20x30L	6.00	
BT50AD/B-SMA40C-160	P2803628C	40	70	160	27	M20x30L	7.15	

- ▶ Inch type products are available.
- ▶ With "Coolant Through" by coolant channels.
- ▶ For parts, please refer to page D311.

SHELL MILL ARBOR (COOLANT CHANNEL & LARGE FACE)

AUFNAHMEDORN FÜR FRÄSER MIT BOHRUNG
MANDRIN PORTE-FRAISES
MANDRINO CON TRASCINAMENTO FISSO
PORTA FRESAS

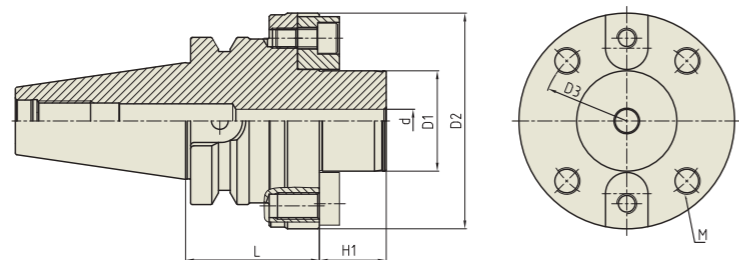


Unit : mm								
TAPER No.	MODEL No.	EDP No.	D1	D2	L	H	BOLT	WEIGHT (Kg)
40	BT40AD/B-SMA16CE-45	P2803701CE	16	38	45	17	M8x16L	1.09
	BT40AD/B-SMA16CE-100	P2803702CE	16	38	100	17	M8x16L	1.57
	BT40AD/B-SMA22CE-45	P2803703CE	22	48	45	19	M10x18L	1.22
	BT40AD/B-SMA22CE-100	P2803704CE	22	48	100	19	M10x18L	1.97
	BT40AD/B-SMA27CE-45	P2803705CE	27	60	45	21	M12x22L	1.39
	BT40AD/B-SMA27CE-100	P2803706CE	27	60	100	21	M12x22L	2.58
50	BT40AD/B-SMA32CE-50	P2803707CE	32	78	50	24	M16x26L	1.80
	BT40AD/B-SMA40CE-50	P2803708CE	40	89	50	27	M20x30L	2.05
	BT50AD/B-SMA22CE-55	P2803709CE	22	48	55	19	M10x18L	3.72
	BT50AD/B-SMA22CE-100	P2803710CE	22	48	100	19	M10x18L	4.33
	BT50AD/B-SMA22CE-160	P2803711CE	22	48	160	19	M10x18L	5.14
	BT50AD/B-SMA27CE-55	P2803712CE	27	60	55	21	M12x22L	3.89
	BT50AD/B-SMA27CE-100	P2803713CE	27	60	100	21	M12x22L	4.86
	BT50AD/B-SMA27CE-160	P2803714CE	27	60	160	21	M12x22L	6.15
	BT50AD/B-SMA32CE-55	P2803715CE	32	78	55	24	M16x26L	4.21
	BT50AD/B-SMA32CE-100	P2803716CE	32	78	100	24	M16x26L	5.87
	BT50AD/B-SMA32CE-160	P2803717CE	32	78	160	24	M16x26L	8.08
	BT50AD/B-SMA40CE-55	P2803718CE	40	89	55	27	M20x30L	4.52
	BT50AD/B-SMA40CE-100	P2803719CE	40	89	100	27	M20x30L	6.68
	BT50AD/B-SMA40CE-160	P2803720CE	40	89	160	27	M20x30L	9.57

- ▶ Inch type products are available.
- ▶ With "Coolant Through" by coolant channels.
- ▶ For parts, please refer to page D311.

SHELL MILL ARBOR (FLANGE MOUNTING)

AUFNAHMEDORN FÜR FRÄSER MIT BOHRUNG
 MANDRIN PORTE-FRAISES
 MANDRINO CON TRASCINAMENTO FISSO
 PORTA FRESAS

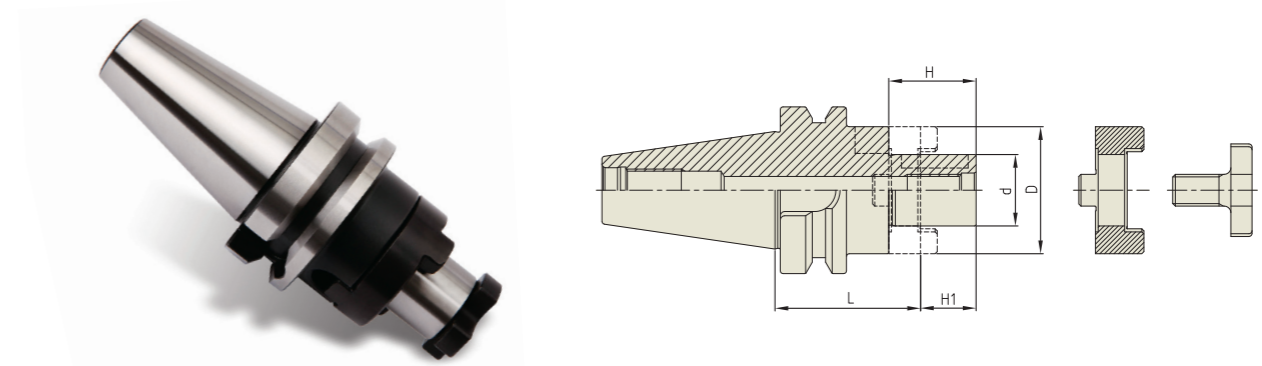


Unit : mm											
TAPER No.	MODEL No.	EDP No.	d1	D1	D2	D3	L	H1	M (TAP)	DRIVE KEY & BOLT	WEIGHT (Kg)
50	BT50-SMF40-70	EI201	14	40	89	66.7	70	30	4-M12	15.9 x 16 x 21.5, M6-15L	-
	BT50-SMF60-80	EI202	14	60	129	101.6	80	40	4-M16	25.4 x 25.4 x 31.5, M12-25L	-

▶ Inch type products are available.

COMBI-SHELL MILL ARBOR

KOMBI-AUFNAHMEDORN FÜR FRÄSER MIT BOHRUNG
 MANDRIN PORTE-FRAISES COMBINÉS
 MANDRINO PORTA FRESE
 PORTA FRESAS COMBINADO



Unit : mm									
TAPER No.	MODEL No.	EDP No.	d	L	D	H1	H	WEIGHT (Kg)	
30	BT30-CMA16-50	P2544001	16	50	32	17	27	0.61	
	BT30-CMA22-50	P2544002	22	50	40	19	31	0.7	
	BT30-CMA27-55	P2544003	27	55	48	21	33	0.92	
40	BT40-CMA16-55	P2544004	16	55	32	17	27	1.14	
	BT40-CMA16-100	P2544015	16	100	32	17	27	1.41	
	BT40-CMA22-55	P2544005	22	55	40	19	31	1.26	
	BT40-CMA22-100	P2544016	22	100	40	19	31	1.68	
	BT40-CMA27-55	P2544006	27	55	48	21	33	1.42	
	BT40-CMA27-100	P2544017	27	100	48	21	33	2.02	
	BT40-CMA32-60	P2544007	32	60	58	24	38	1.72	
	BT40-CMA32-100	P2544018	32	100	58	24	38	2.51	
	BT40-CMA40-70	P2544024	40	70	70	27	41	2.46	
50	BT50-CMA16-70	P2544009	16	70	32	17	27	3.74	
	BT50-CMA16-100	P2544019	16	100	32	17	27	3.92	
	BT50-CMA22-70	P2544010	22	70	40	19	31	3.86	
	BT50-CMA22-100	P2544020	22	100	40	19	31	4.15	
	BT50-CMA27-70	P2544011	27	70	48	21	33	4.04	
	BT50-CMA27-100	P2544021	27	100	48	21	33	4.45	
	BT50-CMA32-70	P2544012	32	70	58	24	38	4.28	
	BT50-CMA32-100	P2544022	32	100	58	24	38	4.86	
	BT50-CMA40-70	P2544013	40	70	70	27	41	4.62	
	BT50-CMA40-100	P2544023	40	100	70	27	41	5.47	
	BT50-CMA50-70	P2544014	50	70	90	30	46	5.48	

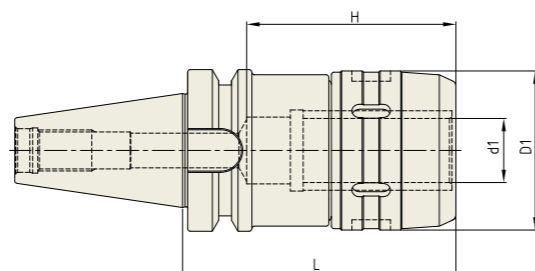
▶ Inch type products are available.
 ▶ For parts, please refer to page D312.

YG POWER MILLING CHUCK

C

HIGH-SPEED POWER MILLING CHUCK

HOCHGESCHWINDIGKEITS FRÄSERFUTTER
 MANDRIN PORTE FRAISE À GRANDE VITESSE
 MANDRINI PORTA FRESA PER ALTA VELOCITÀ
 PORTAHERRAMIENTAS PARA FRESADO DE ALTA VELOCIDAD



Unit : mm

TAPER No.	MODEL No.	EDP No.	d1	D1	L	H	WEIGHT (Kg)
30	BT30-C20-75HS	P2546101	20	54	75	70	1.50
	BT30-C25-80HS	P2546102	25	62	80	70	2.00
40	BT40-C20-80HS	P2546103	20	54	80	70	2.00
	BT40-C20-105HS	P2546104	20	54	105	70	2.10
	BT40-C25-105HS	P2546105	25	62	105	80	2.50
	BT40-C32-90HS	P2546106	32	72	90	100	3.00
	BT40-C32-105HS	P2546107	32	72	105	100	3.10
	BT40-C32-135HS	P2546108	32	72	135	100	3.30
50	BT50-C20-105HS	P2546109	20	54	105	70	4.50
	BT50-C20-135HS	P2546110	20	54	135	70	4.90
	BT50-C20-165HS	P2546111	20	54	165	70	5.40
	BT50-C25-105HS	P2546112	25	62	105	80	5.20
	BT50-C25-135HS	P2546113	25	62	135	80	5.80
	BT50-C25-165HS	P2546114	25	62	165	80	6.20
	BT50-C32-105HS	P2546115	32	72	105	100	6.00
	BT50-C32-135HS	P2546116	32	72	135	100	6.70
	BT50-C32-165HS	P2546117	32	72	165	100	7.40
	BT50-C42-115HS	P2546118	42	92	115	110	6.70
	BT50-C42-135HS	P2546119	42	92	135	110	7.60
	BT50-C42-165HS	P2546120	42	92	165	110	8.30

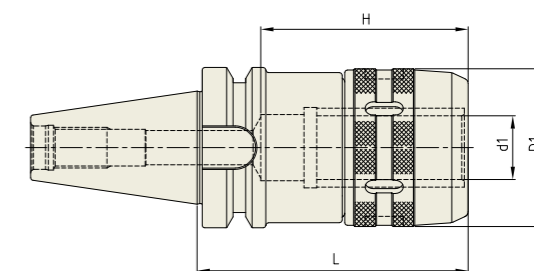
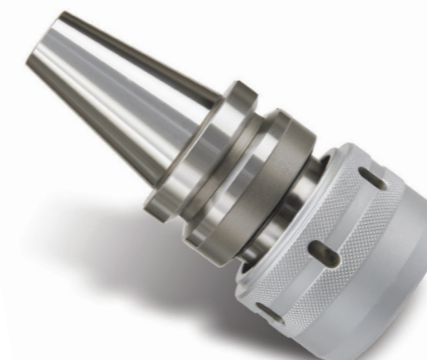
- ▶ Inch type products are available.
- ▶ Balancing Grade is adjusted on Basic holder only without Clamping Cap.
- ▶ For applicable collet and spanner, please refer to the page D314.

YG POWER MILLING CHUCK

C

POWER MILLING CHUCK

FRÄSERSPANNFUTTER
 MANDRIN PORTE FRAISE
 MANDRINI PORTA FRESA
 PORTAHERRAMIENTAS PARA FRESADO



Unit : mm

TAPER No.	MODEL No.	EDP No.	d1	D1	L	H	WEIGHT (Kg)
30	BT30-C20-75	P2546001	20	54	75	70	1.50
	BT30-C25-80	P2546002	25	62	80	70	2.00
40	BT40-C20-80	P2546003	20	54	80	70	2.00
	BT40-C20-105	P2546004	20	54	105	70	2.10
	BT40-C25-105	P2546005	25	62	105	80	2.50
	BT40-C32-90	P2546006	32	72	90	100	3.00
	BT40-C32-105	P2546007	32	72	105	100	3.10
	BT40-C32-135	P2546008	32	72	135	100	3.30
50	BT50-C20-105	P2546009	20	54	105	70	4.50
	BT50-C20-135	P2546010	20	54	135	70	4.90
	BT50-C20-165	P2546011	20	54	165	70	5.40
	BT50-C25-105	P2546012	25	62	105	80	5.20
	BT50-C25-135	P2546013	25	62	135	80	5.80
	BT50-C25-165	P2546014	25	62	165	80	6.20
	BT50-C32-105	P2546015	32	72	105	100	6.00
	BT50-C32-115	P2546016	32	72	115	100	6.20
	BT50-C32-135	P2546017	32	72	135	100	6.70
	BT50-C32-165	P2546018	32	72	165	100	7.40
	BT50-C42-115	P2546019	42	92	115	110	6.70
	BT50-C42-135	P2546020	42	92	135	110	7.60
BT50-C42-165	P2546121	42	92	165	110	8.30	

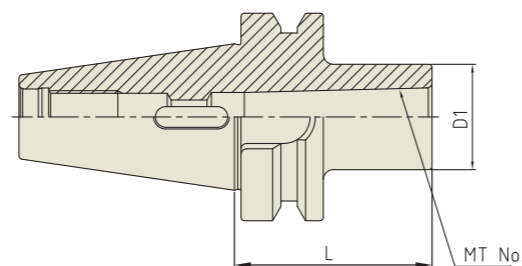
- ▶ Inch type products are available.
- ▶ For applicable collet and spanner, please refer to the page D314.

YIG MORSE TAPER ARBOR

MTA

MORSE TAPER ARBOR

EINSATZHÜLSEN FÜR MORSEKEGEL
DOUILLES DE RÉDUCTION CÔNE MORSE
MANDRINO RIDUZIONE CONO MORSE
REDUCTORES A MORSE



Unit : mm						
TAPER No.	MODEL No.	EDP No.	MT No.	D1	L	WEIGHT (Kg)
30	BT30-MTA1-45	P2542001	1	25	45	0.40
	BT30-MTA2-60	P2542002	2	32	60	0.50
	BT30-MTA2-120	P2542003	2	32	120	0.60
	BT30-MTA3-75	P2542004	3	40	75	0.70
40	BT40-MTA1-45	P2542005	1	25	45	1.00
	BT40-MTA1-120	P2542006	1	25	120	1.30
	BT40-MTA2-60	P2542013	2	32	60	1.00
	BT40-MTA2-120	P2542009	2	32	120	1.40
	BT40-MTA3-75	P2542014	3	40	75	1.20
	BT40-MTA3-135	P2542010	3	40	135	1.80
	BT40-MTA4-95	P2542007	4	50	95	1.10
	BT40-MTA4-165	P2542011	4	50	165	2.40
50	BT50-MTA1-45	P2542008	1	25	45	4.00
	BT50-MTA1-120	P2542017	1	25	120	4.30
	BT50-MTA1-180	P2542018	1	25	180	4.30
	BT50-MTA2-45	P2542015	2	32	45	4.00
	BT50-MTA2-135	P2542019	2	32	135	4.40
	BT50-MTA2-180	P2542020	2	32	180	4.60
	BT50-MTA3-45	P2542021	3	40	45	3.90
	BT50-MTA3-150	P2542022	3	40	150	4.70
	BT50-MTA3-180	P2542016	3	40	180	4.90
	BT50-MTA4-75	P2542023	4	50	75	4.00
	BT50-MTA4-105	P2542024	4	50	105	4.50
	BT50-MTA4-180	P2542025	4	50	180	5.40
	BT50-MTA5-105	P2542012	5	65	105	4.50
	BT50-MTA5-210	P2542026	5	65	210	7.20
	BT50-MTA5-270	P2542027	5	65	270	7.50

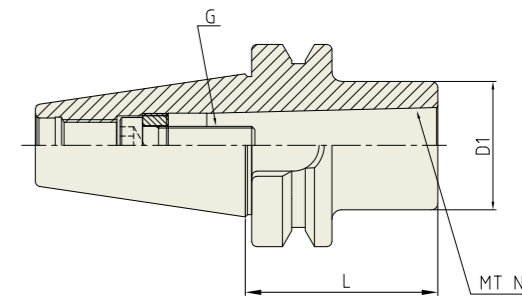
► Inch type products are available.

YIG MORSE TAPER ARBOR

MTB

MORSE TAPER ARBOR

EINSATZHÜLSEN FÜR MORSEKEGEL
DOUILLES DE RÉDUCTION CÔNE MORSE
MANDRINO RIDUZIONE CONO MORSE
REDUCTORES A MORSE



Unit : mm							
TAPER No.	MODEL No.	EDP No.	MT No.	D1	L	G	WEIGHT (Kg)
30	BT30-MTB1-45	P2542028	1	25	45	M6×1.0	0.80
	BT30-MTB2-45	P2542029	2	32	45	M10×1.5	0.80
40	BT40-MTB1-45	P2600019	1	25	45	M6×1.0	1.00
	BT40-MTB2-45	P2600020	2	32	45	M10×1.5	1.10
	BT40-MTB3-60	P2543016	3	40	60	M12×1.75	1.10
50	BT40-MTB4-85	P2600021	4	50	85	M16×2.0	1.30
	BT50-MTB1-45	P2543008	1	25	45	M6×1.0	3.90
	BT50-MTB2-45	P2542030	2	32	45	M10×1.5	3.90
	BT50-MTB3-60	P2542031	3	40	60	M12×1.75	3.90
	BT50-MTB4-75	P2542032	4	50	75	M16×2.0	3.90

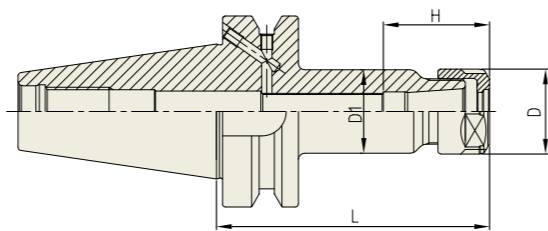
► Inch type products are available.



SKA

SK SLIM CHUCK

SK SCHLANKE FUTTER
MANDRIN TYPE SK MINCE
SK MANDRINI SOTTILI
PORTAHERRAMIENTAS SK EJE REDUCIDO



Unit : mm									
TAPER No.	MODEL No.	EDP No.	CLAMPING RANGE	L	D	D1	H	COLLET	WEIGHT (Kg)
30	BT30-SKA06-60	P2775754A	1.8 - 6.0	60	20	19.5	31	SKC6	0.70
	BT30-SKA06-90	P2775755A	1.8 - 6.0	90	20	19.5	31	SKC6	0.80
	BT30-SKA10-60	P2775756A	1.75 - 10.0	60	28	27.5	35	SKC10	0.90
	BT30-SKA10-90	P2775757A	1.75 - 10.0	90	28	27.5	35	SKC10	1.00
	BT30-SKA13-60	P2775758A	2.75 - 13.0	60	33	33	43.6	SKC13	1.00
	BT30-SKA13-90	P2775759A	2.75 - 13.0	90	33	33	43.6	SKC13	1.10
	BT30-SKA16-60	P2775760A	2.75 - 16.0	60	40	40	52	SKC16	1.10
	BT30-SKA16-90	P2775761A	2.75 - 16.0	90	40	40	52	SKC16	1.20
	BT30-SKA20-60	P2775762A	3.5 - 20.0	60	48.5	40	59.6	SKC20	1.30
	BT30-SKA20-90	P2775763A	3.5 - 20.0	90	48.5	40	59.6	SKC20	1.40
	BT30-SKA25-90	P2775764A	16.0 - 25.4	90	45	55	63.4	SKC25	1.50
	40	BT40AD/B-SKA06-90	P2775765	1.8 - 6.0	90	20	19.5	31	SKC6
BT40AD/B-SKA06-120		P2775766	1.8 - 6.0	120	20	19.5	31	SKC6	1.40
BT40AD/B-SKA06-150		P2775767	1.8 - 6.0	150	20	19.5	31	SKC6	1.50
BT40AD/B-SKA10-90		P2775768	1.75 - 10.0	90	28	27.5	35	SKC10	1.20
BT40AD/B-SKA10-120		P2775769	1.75 - 10.0	120	28	27.5	35	SKC10	1.40
BT40AD/B-SKA10-150		P2775770	1.75 - 10.0	150	28	27.5	35	SKC10	1.60
BT40AD/B-SKA13-90		P2775771	2.75 - 13.0	90	33	33	43.6	SKC13	1.40
BT40AD/B-SKA13-120		P2775772	2.75 - 13.0	120	33	33	43.6	SKC13	1.60
BT40AD/B-SKA13-150		P2775773	2.75 - 13.0	150	33	33	43.6	SKC13	1.80
BT40AD/B-SKA16-90		P2775774	2.75 - 16.0	90	40	40	52	SKC16	1.50
BT40AD/B-SKA16-120		P2775775	2.75 - 16.0	120	40	40	52	SKC16	1.70
BT40AD/B-SKA16-150		P2775776	2.75 - 16.0	150	40	40	52	SKC16	1.90
BT40AD/B-SKA20-90		P2775777	3.5 - 20.0	90	48.5	48.5	59.6	SKC20	1.60
BT40AD/B-SKA20-120		P2775778	3.5 - 20.0	120	48.5	48.5	59.6	SKC20	2.00
BT40AD/B-SKA20-150		P2775779	3.5 - 20.0	150	48.5	48.5	59.6	SKC20	2.40
BT40AD/B-SKA25-90		P2775780	16.0 - 25.4	90	55	55	63.4	SKC25	1.80
BT40AD/B-SKA25-120		P2775781	16.0 - 25.4	120	55	55	63.4	SKC25	2.00
BT40AD/B-SKA25-150		P2775782	16.0 - 25.4	150	55	55	63.4	SKC25	2.30

- ▶ Inch type products are available.
- ▶ Balancing grade G2.5 at 25,000RPM or U max. < 1gmm.
- ▶ For applicable Collet, Nut and Spanner, please refer to page D315~D317.

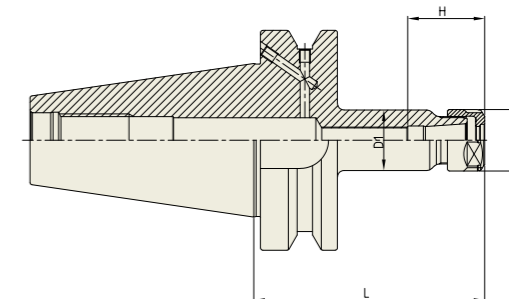
▶ NEXT PAGE



SKA

SK SLIM CHUCK

SK SCHLANKE FUTTER
MANDRIN TYPE SK MINCE
SK MANDRINI SOTTILI
PORTAHERRAMIENTAS SK EJE REDUCIDO



Unit : mm									
TAPER No.	MODEL No.	EDP No.	CLAMPING RANGE	L	D	D1	H	COLLET	WEIGHT (Kg)
50	BT50AD/B-SKA06-105	P2775783	1.8 - 6.0	105	20	19.5	31	SKC6	3.80
	BT50AD/B-SKA06-135	P2775784	1.8 - 6.0	135	20	19.5	31	SKC6	3.90
	BT50AD/B-SKA06-165	P2775785	1.8 - 6.0	165	20	19.5	31	SKC6	4.00
	BT50AD/B-SKA06-195	P2775786	1.8 - 6.0	195	20	19.5	31	SKC6	4.20
	BT50AD/B-SKA10-105	P2775787	1.75 - 10.0	105	28	27.5	35	SKC10	4.20
	BT50AD/B-SKA10-135	P2775788	1.75 - 10.0	135	28	27.5	35	SKC10	4.40
	BT50AD/B-SKA10-165	P2775789	1.75 - 10.0	165	28	27.5	35	SKC10	4.60
	BT50AD/B-SKA10-195	P2775790	1.75 - 10.0	195	28	27.5	35	SKC10	4.80
	BT50AD/B-SKA13-105	P2775791	2.75 - 13.0	105	33	33	43.6	SKC13	4.50
	BT50AD/B-SKA13-135	P2775792	2.75 - 13.0	135	33	33	43.6	SKC13	4.70
	BT50AD/B-SKA13-165	P2775793	2.75 - 13.0	165	33	33	43.6	SKC13	4.90
	BT50AD/B-SKA13-195	P2775794	2.75 - 13.0	195	33	33	43.6	SKC13	5.20
	BT50AD/B-SKA16-105	P2775795	2.75 - 16.0	105	40	40	52	SKC16	4.70
	BT50AD/B-SKA16-135	P2775796	2.75 - 16.0	135	40	40	52	SKC16	4.90
	BT50AD/B-SKA16-165	P2775797	2.75 - 16.0	165	40	40	52	SKC16	5.10
	BT50AD/B-SKA16-195	P2775798	2.75 - 16.0	195	40	40	52	SKC16	5.50
	BT50AD/B-SKA20-105	P2775799	3.5 - 20.0	105	48.5	48.5	59.6	SKC20	4.30
	BT50AD/B-SKA20-135	P2775800	3.5 - 20.0	135	48.5	48.5	59.6	SKC20	4.60
	BT50AD/B-SKA20-165	P2775801	3.5 - 20.0	165	48.5	48.5	59.6	SKC20	5.00
	BT50AD/B-SKA20-195	P2775802	3.5 - 20.0	195	48.5	48.5	59.6	SKC20	5.40
	BT50AD/B-SKA25-105	P2775803	16.0 - 25.4	105	55	55	63.4	SKC25	5.20
	BT50AD/B-SKA25-135	P2775804	16.0 - 25.4	135	55	55	63.4	SKC25	5.40
	BT50AD/B-SKA25-165	P2775805	16.0 - 25.4	165	55	55	63.4	SKC25	5.60
	BT50AD/B-SKA25-195	P2775806	16.0 - 25.4	195	55	55	63.4	SKC25	6.00

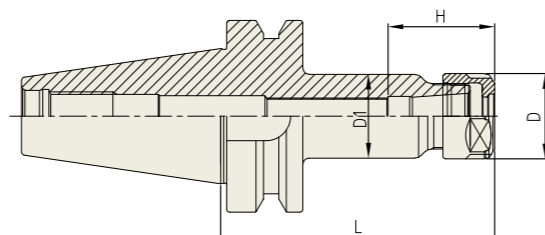
- ▶ Inch type products are available.
- ▶ Balancing grade G2.5 at 25,000RPM or U max. < 1gmm.
- ▶ For applicable Collet, Nut and Spanner, please refer to page D315~D317.



SKA

SK SLIM CHUCK

SK SCHLANKE FUTTER
MANDRIN TYPE SK MINCE
SK MANDRINI SOTTILI
PORTAHERRAMIENTAS SK EJE REDUCIDO



Unit : mm									
TAPER No.	MODEL No.	EDP No.	CLAMPING RANGE	L	D	D1	H	COLLET	WEIGHT (Kg)
30	BT30-SKA06-60	P2775754A	1.8 - 6.0	60	20	19.5	31	SKC6	0.70
	BT30-SKA06-90	P2775755A	1.8 - 6.0	90	20	19.5	31	SKC6	0.80
	BT30-SKA10-60	P2775756A	1.75 - 10.0	60	28	27.5	35	SKC10	0.90
	BT30-SKA10-90	P2775757A	1.75 - 10.0	90	28	27.5	35	SKC10	1.00
	BT30-SKA13-60	P2775758A	2.75 - 13.0	60	33	33	43.6	SKC13	1.00
	BT30-SKA13-90	P2775759A	2.75 - 13.0	90	33	33	43.6	SKC13	1.10
	BT30-SKA16-60	P2775760A	2.75 - 16.0	60	40	40	52	SKC16	1.10
	BT30-SKA16-90	P2775761A	2.75 - 16.0	90	40	40	52	SKC16	1.20
	BT30-SKA20-60	P2775762A	3.5 - 20.0	60	48.5	40	59.6	SKC20	1.30
	BT30-SKA20-90	P2775763A	3.5 - 20.0	90	48.5	40	59.6	SKC20	1.40
	BT30-SKA25-90	P2775764A	16.0 - 25.4	90	55	45	63.4	SKC25	1.50
	40	BT40-SKA06-90	P2775818	1.8 - 6.0	90	20	19.5	31	SKC6
BT40-SKA06-120		P2775819	1.8 - 6.0	120	20	19.5	31	SKC6	1.40
BT40-SKA06-150		P2775820	1.8 - 6.0	150	20	19.5	31	SKC6	1.50
BT40-SKA10-90		P2775821	1.75 - 10.0	90	28	27.5	35	SKC10	1.20
BT40-SKA10-120		P2775822	1.75 - 10.0	120	28	27.5	35	SKC10	1.40
BT40-SKA10-150		P2775823	1.75 - 10.0	150	28	27.5	35	SKC10	1.60
BT40-SKA13-90		P2775824	2.75 - 13.0	90	33	33	43.6	SKC13	1.40
BT40-SKA13-120		P2775825	2.75 - 13.0	120	33	33	43.6	SKC13	1.60
BT40-SKA13-150		P2775826	2.75 - 13.0	150	33	33	43.6	SKC13	1.80
BT40-SKA16-90		P2775827	2.75 - 16.0	90	40	40	52	SKC16	1.50
BT40-SKA16-120		P2775828	2.75 - 16.0	120	40	40	52	SKC16	1.70
BT40-SKA16-150		P2775829	2.75 - 16.0	150	40	40	52	SKC16	1.90
BT40-SKA20-90		P2775830	3.5 - 20.0	90	48.5	48.5	59.6	SKC20	1.60
BT40-SKA20-120		P2775831	3.5 - 20.0	120	48.5	48.5	59.6	SKC20	2.00
BT40-SKA20-150		P2775832	3.5 - 20.0	150	48.5	48.5	59.6	SKC20	2.40
BT40-SKA25-90		P2775833	16.0 - 25.4	90	55	55	63.4	SKC25	1.80
BT40-SKA25-120		P2775834	16.0 - 25.4	120	55	55	63.4	SKC25	2.00
BT40-SKA25-150		P2775835	16.0 - 25.4	150	55	55	63.4	SKC25	2.30

▶ Inch type products are available.
▶ For applicable Collet, Nut and Spanner, please refer to page D315~D317.

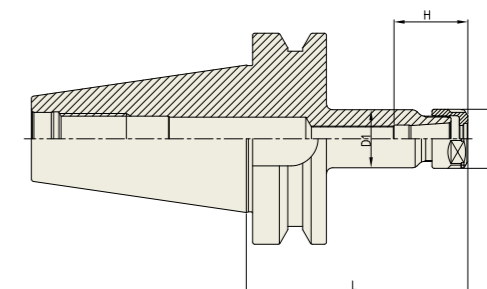
▶ NEXT PAGE



SKA

SK SLIM CHUCK

SK SCHLANKE FUTTER
MANDRIN TYPE SK MINCE
SK MANDRINI SOTTILI
PORTAHERRAMIENTAS SK EJE REDUCIDO



Unit : mm									
TAPER No.	MODEL No.	EDP No.	CLAMPING RANGE	L	D	D1	H	COLLET	WEIGHT (Kg)
50	BT50-SKA06-105	P2775836	1.8 - 6.0	105	20	19.5	31	SKC6	3.80
	BT50-SKA06-135	P2775837	1.8 - 6.0	135	20	19.5	31	SKC6	3.90
	BT50-SKA06-165	P2775838	1.8 - 6.0	165	20	19.5	31	SKC6	4.00
	BT50-SKA06-195	P2775839	1.8 - 6.0	195	20	19.5	31	SKC6	4.20
	BT50-SKA10-105	P2775840	1.75 - 10.0	105	28	27.5	35	SKC10	4.20
	BT50-SKA10-135	P2775841	1.75 - 10.0	135	28	27.5	35	SKC10	4.40
	BT50-SKA10-165	P2775842	1.75 - 10.0	165	28	27.5	35	SKC10	4.60
	BT50-SKA10-195	P2775843	1.75 - 10.0	195	28	27.5	35	SKC10	4.80
	BT50-SKA13-105	P2775844	2.75 - 13.0	105	33	33	43.6	SKC13	4.50
	BT50-SKA13-135	P2775845	2.75 - 13.0	135	33	33	43.6	SKC13	4.70
	BT50-SKA13-165	P2775846	2.75 - 13.0	165	33	33	43.6	SKC13	4.90
	BT50-SKA13-195	P2775847	2.75 - 13.0	195	33	33	43.6	SKC13	5.20
	BT50-SKA16-105	P2775848	2.75 - 16.0	105	40	40	52	SKC16	4.70
	BT50-SKA16-135	P2775849	2.75 - 16.0	135	40	40	52	SKC16	4.90
	BT50-SKA16-165	P2775850	2.75 - 16.0	165	40	40	52	SKC16	5.10
	BT50-SKA16-195	P2775851	2.75 - 16.0	195	40	40	52	SKC16	5.50
	BT50-SKA20-105	P2775852	3.5 - 20.0	105	48.5	48.5	59.6	SKC20	4.30
	BT50-SKA20-135	P2775853	3.5 - 20.0	135	48.5	48.5	59.6	SKC20	4.60
	BT50-SKA20-165	P2775854	3.5 - 20.0	165	48.5	48.5	59.6	SKC20	5.00
	BT50-SKA20-195	P2775855	3.5 - 20.0	195	48.5	48.5	59.6	SKC20	5.40
	BT50-SKA25-105	P2775856	16.0 - 25.4	105	55	55	63.4	SKC25	5.20
	BT50-SKA25-135	P2775857	16.0 - 25.4	135	55	55	63.4	SKC25	5.40
	BT50-SKA25-165	P2775858	16.0 - 25.4	165	55	55	63.4	SKC25	5.60
	BT50-SKA25-195	P2775859	16.0 - 25.4	195	55	55	63.4	SKC25	6.00

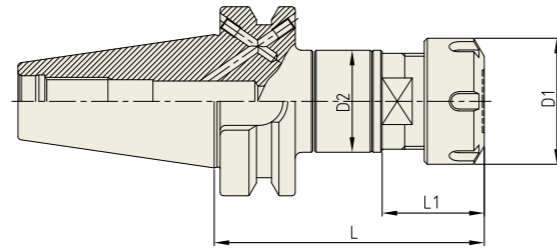
▶ Inch type products are available.
▶ For applicable Collet, Nut and Spanner, please refer to page D315~D317.

SYNCHRO TAPPING CHUCK

SYTER

SYNCHRO TAPPING CHUCK (ER TYPE)

SK SCHLANKE FUTTER
MANDRIN TYPE SK MINCE
SK MANDRINI SOTTILI
PORTAHERRAMIENTAS SK EJE REDUCIDO



Unit : mm

TAPER No.	MODEL No.	EDP No.	TAP SIZE	NUT / COLLET	D1	D2	L	L1	TENSION/ COMPRESSION	WEIGHT (Kg)
30	BT30-SYTER12-85	P2776315	M3-M12	ER16	28	34	85	26	±0.2	-
	BT30-SYTER20-95	P2776316	M3-M20	ER25	42	34	95	34	±0.2	-
	BT30-SYTER27-90	P2776317	M4-M27	ER32	50	45	90	31	±0.2	-
40	BT40AD/B-SYTER12-79	P2776301	M3-M12	ER16	28	34	79	26	±0.2	1.14
	BT40AD/B-SYTER16-85	P2776302	M3-M16	ER20	34	34	85	27	±0.2	1.17
	BT40AD/B-SYTER20-90	P2776303	M3-M20	ER25	42	34	90	34	±0.2	1.17
	BT40AD/B-SYTER27-100	P2776304	M4-M27	ER32	50	45	100	31	±0.2	1.45
	BT40AD/B-SYTER33-125	P2776305	M4-M33	ER40	63	62	125	35	±0.2	2.40
	50	BT50AD/B-SYTER12-100	P2776306	M3-M12	ER16	28	34	100	26	±0.2
BT50AD/B-SYTER16-100		P2776307	M3-M16	ER20	34	34	100	27	±0.2	3.79
BT50AD/B-SYTER20-100		P2776308	M3-M20	ER25	42	34	100	34	±0.2	3.75
BT50AD/B-SYTER27-110		P2776309	M4-M27	ER32	50	45	110	31	±0.2	3.99
BT50AD/B-SYTER33-125		P2776310	M4-M33	ER40	63	62	125	35	±0.2	4.75

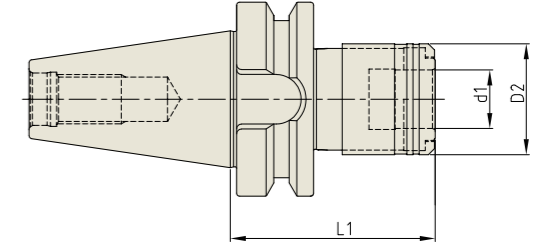
- ▶ Feature :
 - Compensation for synchronization errors to extend tap life and to improve thread quality.
 - To compensate for pitch tolerances of taps.
 - For machine with synchronized spindle
- ▶ Inch type products are available.
- ▶ ER collet of page D296~D302, and Tap ER collet of page D303~D304 are applicable.

ONE STEP TAPPING CHUCK

OTC

ONE STEP TAPPING CHUCK

GEWINDE-SCHNELLWECHSELFUTTER
MANDRIN DE TARAUDAGE À CHANGEMENT RAPIDE
PORTAMASCHI A CAMBIO RAPIDO
MANDRINO DE CAMBIO RÁPIDO CON ROSCA



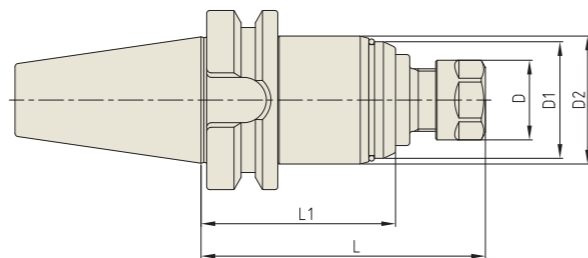
Unit : mm

TAPER No.	MODEL No.	EDP No.	d1	D2	L1	LENGTH COMPENSATION		WEIGHT (Kg)
						Compression	Tension	
40	BT40-OTC-M3-M12-66.5	P2802451	19	36	66.5	7.5	7.5	1.10
	BT40-OTC-M8-M20-93.5	P2802452	31	53	93.5	12.5	12.5	1.50
	BT40-OTC-M14-M36-162.5	P2802453	48	78	162.5	20	20	3.30
50	BT50-OTC-M3-M12-85	P2802454	19	36	85	7.5	7.5	3.00
	BT50-OTC-M8-M20-101.5	P2802455	31	53	101.5	12.5	12.5	3.30
	BT50-OTC-M14-M36-141	P2802456	48	78	141	20	20	5.20

▶ For applicable Tap Adaptor, please refer to the page D318~D319.

TAPPING ER CHUCK

ER - GEWINDESCHNEIDFUTTER
 MANDRIN DE TARAUDAGE PINCE ER
 MANDRINI PORTAPINZA ER PER MASCHIATURA
 PORTAPINZAS ER PARA MACHOS



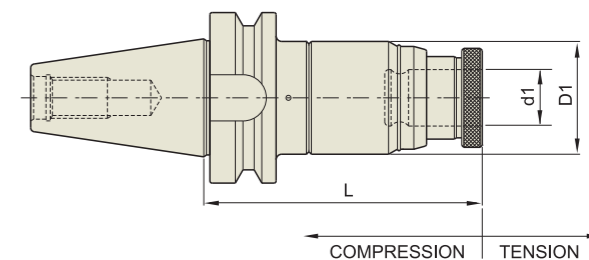
Unit : mm

TAPER No.	MODEL No.	EDP No.	D	D1	D2	L	L1	NUT / COLLET	WEIGHT (Kg)
40	BT40-TER16-100	P2774159	28	41	45	100	68.4	ER16	1.45
	BT40-TER16-150	P2774160	28	41	45	150	118.4	ER16	2.00
	BT40-TER32-110	P2774161	50	58	63	110	72	ER32	2.20
50	BT40-TER32-150	P2774162	50	58	63	150	112	ER32	2.70
	BT50-TER16-115	P2774163	28	41	45	115	79.4	ER16	3.95
	BT50-TER16-150	P2774164	28	41	45	150	114.4	ER16	4.35
	BT50-TER32-120	P2774165	50	58	63	120	83	ER32	4.70
	BT50-TER32-150	P2774166	50	58	63	150	113	ER32	5.20

▶ Inch type products are available.
 ▶ ER collet of page D296~D302 and Tap ER collet of page D303~D304 are applicable.

TAPPING CHUCK

GEWINDESCHNEID - SCHNELLWECHSELFUTTER
 TARAUDER À CHANGEMENT RAPIDE
 MANDRINO PER MASCHIARE
 PORTAMACHOS DE CAMBIO RAPIDO



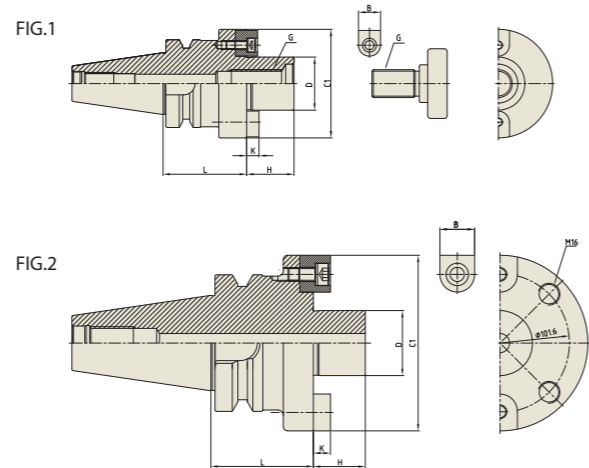
Unit : mm

TAPER No.	MODEL No.	EDP No.	TAP SIZE	TAP ADAPTOR	LENGTH COMPENSATION		d1	D1	L	WEIGHT (Kg)
					Compression	Tension				
30	BT30-TC12-105	P2778401	M3-M12	TCS12	5	15	19	45	105	1.00
	BT40-TC12-90	P2540011	M3-M12	TCS12	5	15	19	45	95	1.50
40	BT40-TC12-130	P2778403	M3-M12	TCS12	5	15	19	45	130	1.60
	BT40-TC24-100	P2540002	M6-M24	TCS24	5	20	31	63	100	2.10
	BT40-TC24-142	P2778405	M6-M24	TCS24	5	20	31	63	142	2.90
50	BT50-TC12-130	P2540003	M3-M12	TCS12	5	15	19	45	130	4.20
	BT50-TC12-175	P2778407	M3-M12	TCS12	5	15	19	45	175	4.80
	BT50-TC12-220	P2778408	M3-M12	TCS12	5	15	19	45	220	5.10
	BT50-TC24-142	P2540004	M6-M24	TCS24	5	20	31	63	142	5.80
	BT50-TC24-187	P2778410	M6-M24	TCS24	5	20	31	63	187	6.00
	BT50-TC38-175	P2540005	M18-M38	TCS38	10	25	48	98	175	8.30

▶ Inch type products are available.
 ▶ For applicable Tap Adaptor, please refer to page D318~D319.

FACE MILL ARBOR

AUFNAHMEDORN FÜR MESSERKÖPFE
ARBRE PORTE FRAISE À ALÉSAGE
MANDRINO PORTA FRESE FRONTALE
EJE PARA PLATOS DE PLACAS



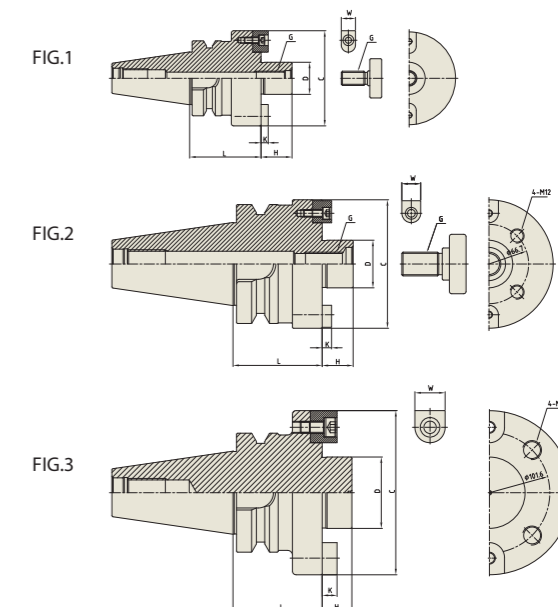
Unit : mm

TAPER No.	MODEL No.	EDP No.	D	L	C1	H	B	K	G	FIG.	WEIGHT (Kg)
30	BT30-FMA25.4-45	P2779222	25.4	45	50	22	9.52	4.8	M12	1	1.10
	BT30-FMA31.75-45	P2779223	31.75	45	60	30	12.7	6.35	M16	1	1.20
40	BT40-FMA25.4-45	P2779224	25.4	45	50	22	9.52	4.8	M12	1	1.50
	BT40-FMA25.4-90	P2779225	25.4	90	50	22	9.52	4.8	M12	1	3.10
	BT40-FMA31.75-45	P2779226	31.75	45	60	30	12.7	6.35	M16	1	1.90
	BT40-FMA31.75-75	P2779227	31.75	75	60	30	12.7	6.35	M16	1	2.70
	BT40-FMA38.1-60	P2779228	38.1	60	80	34	15.87	8.87	M20	1	2.90
	BT40-FMA38.1-75	P2779229	38.1	75	80	34	15.87	8.87	M20	1	3.70
50	BT50-FMA25.4-45	P2779230	25.4	45	50	22	9.52	4.8	M12	1	4.60
	BT50-FMA25.4-90	P2779231	25.4	90	50	22	9.52	4.8	M12	1	5.50
	BT50-FMA31.75-45	P2779232	31.75	45	60	30	12.7	6.35	M16	1	4.50
	BT50-FMA31.75-75	P2779233	31.75	75	60	30	12.7	6.35	M16	1	5.30
	BT50-FMA31.75-105	P2779234	31.75	105	60	30	12.7	6.35	M16	1	5.80
	BT50-FMA31.75-150	P2779235	31.75	150	60	30	12.7	6.35	M16	1	6.30
	BT50-FMA38.1-45	P2779236	38.1	45	80	34	15.87	8.87	M20	1	4.30
	BT50-FMA38.1-75	P2779237	38.1	75	80	34	15.87	8.87	M20	1	5.60
	BT50-FMA38.1-105	P2779238	38.1	105	80	34	15.87	8.87	M20	1	6.00
	BT50-FMA38.1-150	P2779239	38.1	150	80	34	15.87	8.87	M20	1	6.50
	BT50-FMA50.8-45	P2779240	50.8	45	98	36	19.05	11	M24	1	4.90
	BT50-FMA50.8-75	P2779241	50.8	75	98	36	19.05	11	M24	1	6.80
BT50-FMA47.625-75	P2779242	47.625	75	128.57	38	25.4	12.5	-	2	7.70	

▶ CAT(ASME B5.50) taper products are available.
▶ For parts, please refer to page D313.

FACE MILL ARBOR

AUFNAHMEDORN FÜR MESSERKÖPFE
ARBRE PORTE FRAISE À ALÉSAGE
MANDRINO PORTA FRESE FRONTALE
EJE PARA PLATOS DE PLACAS



◆ METRIC TYPE

Unit : mm

TAPER No.	MODEL No.	EDP No.	D	L	C	H	W	K	G	FIG.	WEIGHT (Kg)
30	BT30-FMB27-45	P2779291	27	45	80	26	12	6	M12	1	2.10
	BT40-FMB27-60	P2779292	27	60	80	26	12	6	M12	1	2.50
40	BT40-FMB27-90	P2779293	27	90	80	26	12	6	M12	1	4.70
	BT40-FMB40-60	P2779294	40	60	85	26	15.875	7	M20	1	7.40
	BT50-FMB27-45	P2779295	27	45	80	26	12	6	M12	1	4.00
50	BT50-FMB27-90	P2779296	27	90	80	26	12	6	M12	1	5.80
	BT50-FMB27-150	P2779297	27	150	80	26	12	6	M12	1	8.20
	BT50-FMB40-45	P2779298	40	45	85	26	15.875	7.8	M20	1	4.70
	BT50-FMB40-75	P2779299	40	75	85	26	15.875	7	M20	1	6.10
	BT50-FMB40-105	P2779300	40	105	85	26	15.875	7	M20	1	8.10
	BT50-FMB40F-75	P2779301	40	75	108	26	15.875	7.87	M20	2	6.60
	BT50-FMB60-75	P2779302	60	75	138	25	25.4	12.5	-	3	7.90

◆ INCH TYPE

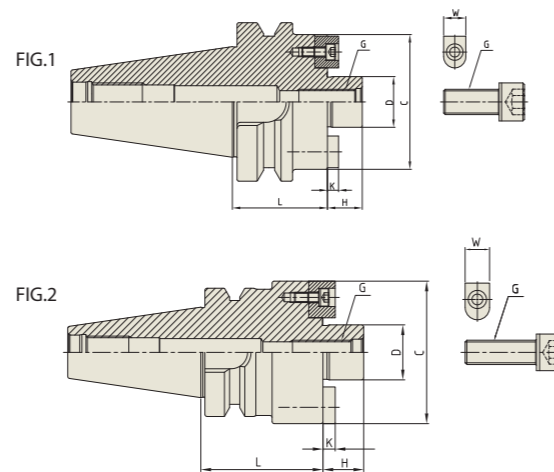
Unit : mm

TAPER No.	MODEL No.	EDP No.	D	L	C	H	W	K	G	FIG.	WEIGHT (Kg)
30	BT30-FMB25.4-45	P2779315	25.4	45	80	26	9.5	5	M12	1	2.10
	BT40-FMB25.4-60	P2779304	25.4	60	80	26	9.5	5	M12	1	2.50
40	BT40-FMB25.4-90	P2779305	25.4	90	80	26	9.5	5	M12	1	4.70
	BT40-FMB38.1-60	P2779306	38.1	60	85	26	15.9	9	M20	1	7.40
	BT50-FMB25.4-45	P2779307	25.4	45	80	26	9.5	5	M12	1	4.00
50	BT50-FMB25.4-90	P2779308	25.4	90	80	26	9.5	5	M12	1	5.80
	BT50-FMB25.4-150	P2779309	25.4	150	80	26	9.5	5	M12	1	8.20
	BT50-FMB38.1-45	P2779310	38.1	45	85	26	15.9	9	M20	1	4.70
	BT50-FMB38.1-75	P2779311	38.1	75	85	26	15.9	9	M20	1	6.10
	BT50-FMB38.1-105	P2779312	38.1	105	85	26	15.9	9	M20	1	8.70
	BT50-FMB38.1F-75	P2779313	38.1	75	110	26	15.9	9	M20	2	6.60

▶ CAT(ASME B5.50) taper products are available.
▶ Fig. 3 : Without "Coolant Through".
▶ For parts, please refer to page D313.

FACE MILL ARBOR

AUFNAHMEDORN FÜR MESSERKÖPFE
ARBRE PORTE FRAISE À ALÉSAGE
MANDRINO PORTA FRESE FRONTALE
EJE PARA PLATOS DE PLACAS



◆ METRIC TYPE

Unit : mm

TAPER No.	MODEL No.	EDP No.	D	L	C	H	W	K	G	FIG.	WEIGHT (Kg)
30	BT30-FMC22-45	P2776101	22	45	45	18	10	5	M10	1	0.80
	BT30-FMC22-60	P2776127	22	60	45	18	10	5	M10	1	1.00
40	BT40-FMC16-90	P2776128	16	90	34	17	8	4	M8	1	-
	BT40-FMC22-45	P2776102	22	45	45	18	10	5	M10	1	1.30
	BT40-FMC22-90	P2776129	22	90	45	18	10	5	M10	1	1.84
	BT40-FMC22-105	P2776126	22	105	45	18	10	5	M10	1	2.02
	BT40-FMC27-60	P2776103	27	60	70	20	12	6	M12	2	1.50
50	BT40-FMC32-60	P2776104	32	60	83	22	14	7	M16	2	2.30
	BT50-FMC22-60	P2776105	22	60	45	18	10	5	M10	1	4.20
	BT50-FMC22-105	P2776106	22	105	45	18	10	5	M10	1	4.70
	BT50-FMC22-150	P2776107	22	150	45	18	10	5	M10	1	5.30
	BT50-FMC27-45	P2776108	27	45	70	20	12	6	M12	1	4.10
	BT50-FMC27-90	P2776109	27	90	70	20	12	6	M12	1	5.50
	BT50-FMC27-150	P2776110	27	150	70	20	12	6	M12	1	7.30
	BT50-FMC32-60	P2776111	32	60	85	22	14	7	M16	1	4.20
BT50-FMC32-105	P2776112	32	105	85	22	14	7	M16	1	5.50	
BT50-FMC32-150	P2776113	32	150	85	22	14	7	M16	1	7.00	

◆ INCH TYPE

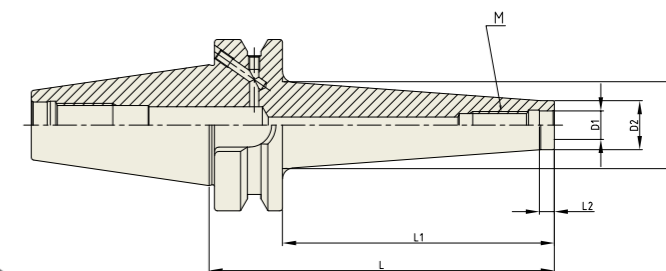
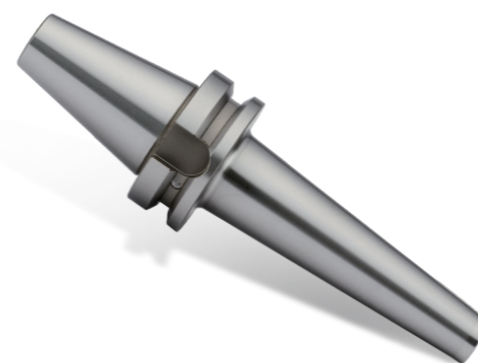
Unit : mm

TAPER No.	MODEL No.	EDP No.	D	L	C	H	W	K	G	FIG.	WEIGHT (Kg)
30	BT30-FMC25.4-45	P2776114	25.4	45	70	20	12	6	M12	2	1.10
40	BT40-FMC25.4-60	P2776115	25.4	60	70	20	9.5	6	M12	2	1.50
	BT40-FMC25.4-90	P2776116	25.4	90	70	20	9.5	6	M12	2	2.20
	BT40-FMC38.1-60	P2776117	38.1	60	85	22	15.9	7	M16	2	2.30
50	BT40-FMC38.1-75	P2776118	38.1	75	85	22	15.9	7	M16	2	2.60
	BT50-FMC25.4-45	P2776119	25.4	45	70	20	9.5	6	M12	1	4.10
	BT50-FMC25.4-90	P2776120	25.4	90	70	20	9.5	6	M12	1	5.50
	BT50-FMC25.4-150	P2776121	25.4	150	70	20	9.5	6	M12	1	7.30
	BT50-FMC38.1-45	P2776122	38.1	45	85	22	15.9	7	M16	1	4.20
	BT50-FMC38.1-75	P2776123	38.1	75	85	22	15.9	7	M16	1	5.50
	BT50-FMC38.1-105	P2776124	38.1	105	85	22	15.9	7	M16	1	7.00

▶ CAT(ASME B5.50) taper products are available.
▶ For parts, please refer to page D313.

COPY MILL ARBOR

WERKZEUGAUFNAHME FÜR EINSCHRAUBFRÄSER MIT GEWINDE
MANDRIN POUR FRAISES À QUEUE FILETÉE AVEC FILETAGE
MANDRINO PER FRESE MODULARI FILETTATE
PORTAHERRAMIENTAS PARA FRESAS DE ENROSCAR CON ROSCA



◆ METRIC TYPE

Unit : mm

TAPER No.	MODEL No. (M-L1)	EDP No.	D1	D2	D3	L	L1	L2	WEIGHT (Kg)
40	BT40AD/B-M6-25	P2801901	6.5	10	13	52	25	5	0.94
	BT40AD/B-M6-50	P2801902	6.5	10	20	77	50	5	0.99
	BT40AD/B-M6-75	P2801903	6.5	10	23	102	75	5	1.04
	BT40AD/B-M8-25	P2801904	8.5	13	15	52	25	5	0.95
	BT40AD/B-M8-50	P2801905	8.5	13	23	77	50	5	1.01
	BT40AD/B-M8-75	P2801906	8.5	13	23	102	75	5	1.05
	BT40AD/B-M10-25	P2801907	10.5	18	20	52	25	5	0.97
	BT40AD/B-M10-50	P2801908	10.5	18	23	77	50	5	1.04
	BT40AD/B-M10-75	P2801909	10.5	18	32	102	75	5	1.28
	BT40AD/B-M12-25	P2801910	12.5	21	15	52	25	5	0.98
50	BT40AD/B-M12-75	P2801911	12.5	21	23	102	75	5	1.22
	BT40AD/B-M12-125	P2801912	12.5	21	23	152	125	5	1.50
	BT40AD/B-M16-25	P2801913	17	29	29	52	25	5	1.01
	BT40AD/B-M16-75	P2801914	17	29	34	102	75	5	1.32
	BT40AD/B-M16-125	P2801915	17	29	40	152	125	5	1.75
	BT50AD/B-M8-50	P2801916	8.5	13	23	88	50	5	3.51
	BT50AD/B-M10-50	P2801917	10.5	18	23	88	50	5	3.54
	BT50AD/B-M10-100	P2801918	10.5	18	32	138	100	10	3.77
	BT50AD/B-M12-50	P2801919	12.5	21	24	88	50	10	3.55
	BT50AD/B-M12-100	P2801920	12.5	21	33	138	100	10	3.82
50	BT50AD/B-M16-50	P2801921	17	29	29	88	50	10	3.63
	BT50AD/B-M16-100	P2801922	17	29	36	138	100	10	3.98
	BT50AD/B-M16-150	P2801923	17	29	42.5	188	150	10	4.48

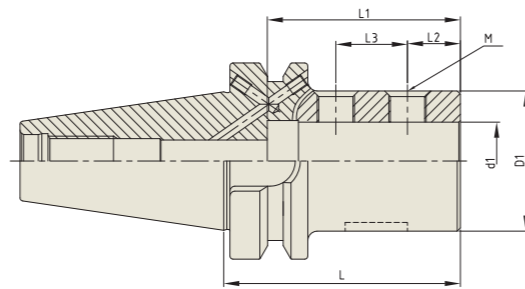
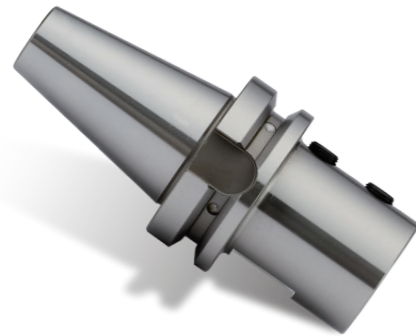
▶ Balancing grade G2.5 at 25,000RPM or U max. < 1 gmm.
▶ For the screw-in milling cutters with thread.

YG INDEXABLE DRILL HOLDER

SL

INDEXABLE DRILL HOLDER

WERKZEUGHALTER FÜR VOLLBOHRER
 MANDRIN POUR FORETS À PLAQUETTES
 MANDRINO PER PUNTE A INSERTI
 SOPORTE PARA HERRAMIENTAS PARA BROCAS DE ACERO MACIZO



Unit : mm										
TAPER No.	MODEL No.	EDP No.	d1	D1	L	L1	L2	L3	M	WEIGHT (Kg)
40	BT40AD/B-SL20-72	P2802101	20	40	72	54	15	20	M10	1.09
	BT40AD/B-SL25-76	P2802102	25	45	76	62	17	23	M12	1.11
	BT40AD/B-SL32-80	P2802103	32	52	80	67	17	27	M12	1.17
	BT40AD/B-SL40-100	P2802104	40	60	100	73	22	28	M16	1.67
50	BT50AD/B-SL20-90	P2802105	20	40	90	54	15	20	M10	3.74
	BT50AD/B-SL25-90	P2802106	25	45	90	59	17	23	M12	3.81
	BT50AD/B-SL32-90	P2802107	32	52	90	70	17	27	M12	3.90
	BT50AD/B-SL40-100	P2802108	40	60	100	80	22	28	M16	4.12

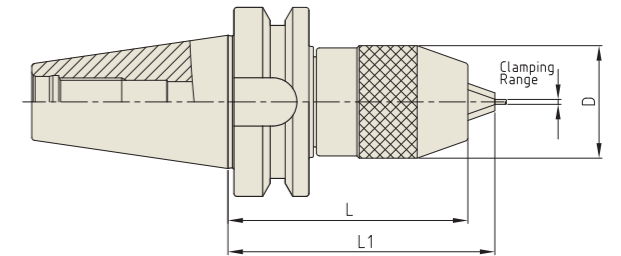
► For the indexable drills with parallel shank.

YG NC DRILL CHUCK

NPU

NC DRILL CHUCK (KEYLESS TYPE)

NC - BOHRFUTTER
 MANDRIN DE PERÇAGE NC
 NC MANDRINI PORTA PUNTE
 PORTABROCAS PARA BROCAS NC



Unit : mm							
TAPER No.	MODEL No.	EDP No.	CLAMPING RANGE	D	L (Min.)	L1 (Max.)	WEIGHT (Kg)
30	BT30-NPU8-75	P2776016	0.3 - 8.0	36.5	75	80.7	0.80
	BT30-NPU13-105	P2776017	0.3 - 13.0	50.4	105	115	1.80
40	BT40-NPU8-80	P2776018	0.3 - 8.0	36.5	80	85.7	1.50
	BT40-NPU8-110	P2776006	0.3 - 8.0	36.5	110	115.7	1.80
	BT40-NPU8-150	P2776007	0.3 - 8.0	36.5	150	155.7	2.60
	BT40-NPU13-95	P2776019	0.3 - 13.0	50.4	95	100.7	2.10
	BT40-NPU13-130	P2776008	0.3 - 13.0	50.4	130	140	2.70
	BT40-NPU13-150	P2776003	0.3 - 13.0	50.4	150	160	3.40
50	BT50-NPU8-90	P2776009	0.3 - 8.0	36.5	90	95.7	4.20
	BT50-NPU8-110	P2776010	0.3 - 8.0	36.5	110	115.7	4.50
	BT50-NPU8-170	P2776011	0.3 - 8.0	36.5	170	180.7	5.20
	BT50-NPU13-105	P2776020	0.3 - 13.0	50.4	105	115	4.80
	BT50-NPU13-130	P2776013	0.3 - 13.0	50.4	130	140	5.20
	BT50-NPU13-150	P2776014	0.3 - 13.0	50.4	150	160	5.50
	BT50-NPU13-190	P2776015	0.3 - 13.0	50.4	190	200	5.90

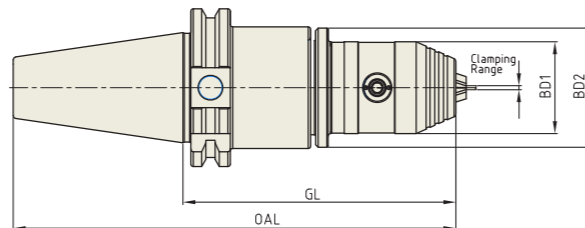
► Supplied with hook wrench. (Size NPU 8 : 8S, NPU 13 : 13S)

YG NC DRILL CHUCK

HKD

NC DRILL CHUCK (HEX. KEY TYPE)

NC - BOHRFUTTER
MANDRIN DE PERÇAGE NC
NC MANDRINI PORTA PUNTE
PORTABROCAS PARA BROCAS NC



Unit : mm

TAPER No.	MODEL No.	EDP No.	CLAMPING RANGE	OAL	GL	BD1	BD2	WEIGHT (Kg)
40	BT40-HKD8-90	P2804005	0.3 - 8.0	155.4	90	37	48	-
	BT40-HKD13-110	P2804006	0.3 - 13.0	175.4	110	50.1	50.1	-
	BT40AD/B-HKD8-120	P2804007	0.3 - 8.0	185.4	120	37	48	-
	BT40AD/B-HKD13-140	P2804008	0.3 - 13.0	205.4	140	50.1	50.1	-

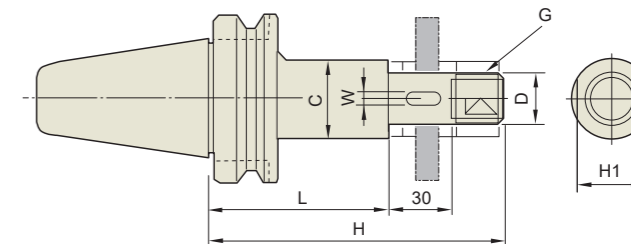
► Supplied with hex. wrench. (Size HKD 8 : 4mm, HKD 13 : 6mm)

YG SIDE CUTTER ARBOR

SCA

SIDE CUTTER ARBOR

SEITENSCHNEIDER LAUBE
TONNELLE PINCE COUPANTE
LATO CUTTER PERGOLATO
LADO DEL EJE DE CORTE



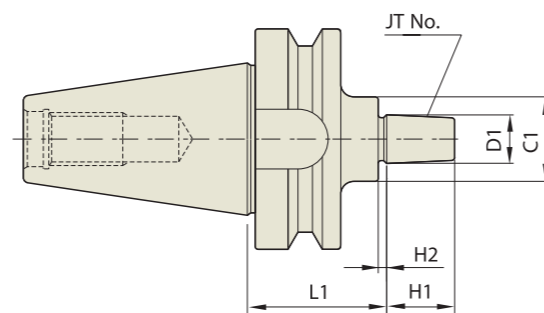
Unit : mm

TAPER No.	MODEL No.	EDP No.	H	H1	C	W	G	D	L	WEIGHT (Kg)
30	BT30-SCA12.7-60	P2779141	105	17	20	-	M12	12.7	60	1.00
	BT30-SCA15.875-60	P2779142	106	23	26	3.18	M14	15.875	60	1.10
	BT30-SCA22.225-60	P2779143	110	29	34	3.18	M20	22.225	60	1.20
	BT30-SCA25.4-60	P2779144	115	32	40	6.35	M24	25.4	60	1.30
40	BT40-SCA12.7-75	P2779145	120	17	20	-	M12	12.7	75	1.20
	BT40-SCA12.7-105	P2779146	150	17	20	-	M12	12.7	105	1.30
	BT40-SCA15.875-75	P2779147	121	23	26	3.18	M14	15.875	75	1.40
	BT40-SCA15.875-120	P2779148	151	23	26	3.18	M14	15.875	120	1.50
	BT40-SCA22.225-75	P2779149	126	29	34	3.18	M20	22.225	75	1.70
	BT40-SCA22.225-120	P2779150	171	29	34	3.18	M20	22.225	120	2.00
	BT40-SCA25.4-75	P2779151	130	32	40	6.35	M24	25.4	75	2.00
	BT40-SCA25.4-120	P2779152	175	32	40	6.35	M24	25.4	120	2.40
50	BT40-SCA31.75-90	P2779153	150	41	46	7.92	M30	31.75	90	2.60
	BT50-SCA12.7-75	P2779154	120	17	20	-	M12	12.7	75	4.10
	BT50-SCA12.7-105	P2779155	150	17	20	-	M12	12.7	105	4.20
	BT50-SCA15.875-90	P2779156	136	23	26	3.18	M14	15.875	90	4.20
	BT50-SCA15.875-120	P2779157	166	23	26	3.18	M14	15.875	120	4.20
	BT50-SCA22.225-90	P2779158	144	29	34	3.18	M20	22.225	90	4.40
	BT50-SCA22.225-135	P2779159	186	29	34	3.18	M20	22.225	135	4.70
	BT50-SCA25.4-90	P2779160	145	32	40	6.35	M24	25.4	90	4.50
	BT50-SCA25.4-135	P2779161	190	32	40	6.35	M24	25.4	135	4.90
	BT50-SCA31.75-90	P2779162	150	41	46	7.92	M30	31.75	90	4.70
	BT50-SCA31.75-135	P2779163	195	41	46	7.92	M30	31.75	135	5.20
50	BT50-SCA38.1-90	P2779164	156	46	55	9.52	M36	38.1	90	4.90
	BT50-SCA38.1-135	P2779165	201	46	55	9.52	M36	38.1	135	5.90

► CAT(ASME B5.50) taper products are available.

JACOBS TAPER ARBOR

JACOBS KEGELZAPFEN ADAPTER
 JACOBS ADAPTEUR DE CÔNE
 JACOBS ADATTATORE DEL CONO
 JACOBS ADAPTADOR DE LA FORMA CONICA



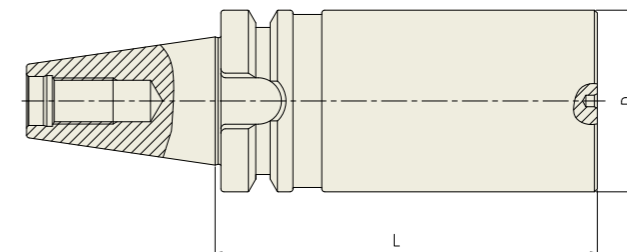
Unit : mm

TAPER No.	MODEL No.	EDP No.	JT No.	D1	L1	H1	H2	C1	WEIGHT (Kg)
30	BT30-JTA1-45	P2779101	1	9.754	45	14	3	30	0.90
	BT30-JTA2-45	P2779102	2	14.199	45	20	4	30	1.00
	BT30-JTA6-45	P2779103	6	17.17	45	24	4	30	1.00
40	BT40-JTA1-45	P2779104	1	9.754	45	14	3	30	1.10
	BT40-JTA1-90	P2779105	1	9.754	90	14	3	30	1.10
	BT40-JTA2S-45	P2779106	2(SHORT)	13.94	45	18	3	30	1.40
	BT40-JTA2S-90	P2779107	2(SHORT)	13.94	90	18	3	30	1.40
	BT40-JTA2-45	P2779108	2	14.199	45	20	4	30	1.10
	BT40-JTA2-90	P2779109	2	14.199	90	20	4	30	1.40
	BT40-JTA33-45	P2779110	33	15.85	45	24	4	30	1.10
	BT40-JTA33-90	P2779111	33	15.85	90	24	4	30	1.40
	BT40-JTA6-45	P2779112	6	17.17	45	24	4	30	1.10
	BT40-JTA6-90	P2779113	6	17.17	90	24	4	30	1.40
	BT40-JTA3-45	P2779114	3	20.599	45	28	5	35	1.20
	BT40-JTA3-90	P2779115	3	20.599	90	28	5	35	1.50
50	BT50-JTA1-45	P2779116	1	9.754	45	14	3	30	4.00
	BT50-JTA1-105	P2779117	1	9.754	105	14	3	30	4.40
	BT50-JTA2S-45	P2779118	2(SHORT)	13.94	45	18	3	30	4.00
	BT50-JTA2S-105	P2779119	2(SHORT)	13.94	105	18	3	30	4.40
	BT50-JTA2-45	P2779120	2	14.199	45	20	4	30	4.00
	BT50-JTA2-105	P2779121	2	14.199	105	20	4	30	4.40
	BT50-JTA33-45	P2779122	33	15.85	45	24	4	30	4.00
	BT50-JTA33-105	P2779123	33	15.85	105	24	4	30	4.40
	BT50-JTA6-45	P2779124	6	17.17	45	24	4	30	4.00
	BT50-JTA6-105	P2779125	6	17.17	105	24	4	30	4.40
	BT50-JTA3-45	P2779126	3	20.599	45	28	5	35	4.00
	BT50-JTA3-105	P2779127	3	20.599	105	28	5	35	4.60

▶ CAT(ASME B5.50) taper and Inch type products are available.

BLANK BAR

BOHRSTANGENROHLING
 EBAUCHE DE BARRES D'ALÉSAGE
 BARRA ALESATRICE GREZZA
 PIEZA EN BRUTO PARA BARRAS DE MANDRINAR



Unit : mm

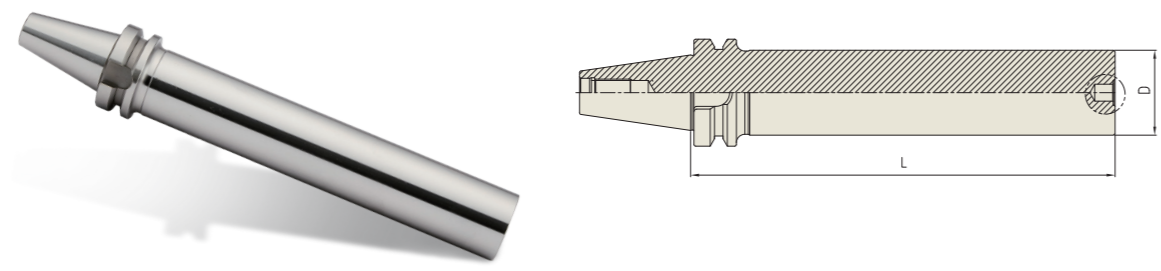
TAPER No.	MODEL No.	EDP No.	D	L	WEIGHT(Kg)
40	BT40-BL63-250	P2779191	63	250	6.37
50	BT50-BL97-315	P2779361	97	315	19.60



TB

TEST BAR
 KONTRÖLDDORN
 MANDRIN DE CONTRÔLE
 MANDRINO DI CONTROLLO
 MANDRIL DE CONTROL

SK (DIN 69871)
 CBT (BT DUAL CONTACT)
 BT (JIS B6339/MAS 403)
 HSK (DIN 69893/ISO 12164)
 STRAIGHT
 ISO, NT, MTA/MTB, GOST
 TOOL HOLDER SET
 BORING SYSTEM
 ACCESSORY & PARTS



Unit : mm

TAPER No.	MODEL No.	EDP No.	D	L	WEIGHT(Kg)
40	BT40-TB40-300	P2802305	40	300	4.59
50	BT50-TB50-300	P2802307	50	300	6.88

YG-1 TOOLING SYSTEM

HSK
 (DIN 69893/ISO 12164)



- HYDRAULIC CHUCK
- SHRINK FIT HOLDER
- ER COLLET CHUCK
- END MILL HOLDER
- SHELL MILL ARBOR
- COMBI-SHELL MILL ARBOR
- POWER MILLING CHUCK
- MORSE TAPER ARBOR
- SK SLIM CHUCK
- SYNCHRO TAPPING CHUCK
- ONE STEP TAPPING CHUCK
- TAPPING ER CHUCK
- TAPPING CHUCK
- FACE MILL ARBOR
- COPY MILL ARBOR
- INDEXABLE DRILL HOLDER
- NC DRILL CHUCK
- BLANK BAR
- TEST BAR