

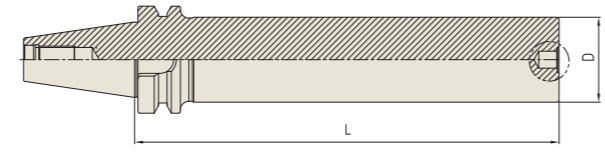


TB

**TEST BAR**

KONTROLLDORN  
MANDRIN DE CONTRÔLE  
MANDRINO DI CONTROLLO  
MANDRIL DE CONTROL

SK (DIN 69871)  
CBT (BT DUAL CONTACT)  
BT (JIS B6339/MAS 403)  
HSK (DIN 69893/ISO 12164)  
STRAIGHT  
ISO, NT, MTA/MTB, GOST  
TOOL HOLDER SET  
BORING SYSTEM  
ACCESSORY & PARTS



Unit : mm

TAPER No.	MODEL No.	EDP No.	D	L	WEIGHT(Kg)
40	BT40-TB40-300	P2802305	40	300	4.59
50	BT50-TB50-300	P2802307	50	300	6.88

YG-1 TOOLING SYSTEM

**HSK**  
(DIN 69893/ISO 12164)

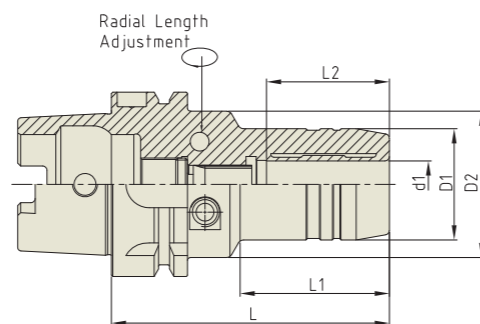


- HYDRAULIC CHUCK
- SHRINK FIT HOLDER
- ER COLLET CHUCK
- END MILL HOLDER
- SHELL MILL ARBOR
- COMBI-SHELL MILL ARBOR
- POWER MILLING CHUCK
- MORSE TAPER ARBOR
- SK SLIM CHUCK
- SYNCHRO TAPPING CHUCK
- ONE STEP TAPPING CHUCK
- TAPPING ER CHUCK
- TAPPING CHUCK
- FACE MILL ARBOR
- COPY MILL ARBOR
- INDEXABLE DRILL HOLDER
- NC DRILL CHUCK
- BLANK BAR
- TEST BAR

**HYDRAULIC CHUCK (RADIAL TOOL LENGTH PRE-SETTING TYPE)**

HYDRAULIK SPANNFUTTER (RADIALE WERKZEUGLÄGEN VOREINSTELLUNG)  
 MANDRIN HYDRAULIQUE (BANC DE PRÉ-RÉGLAGE RADIAL)  
 MANDRINI IDRAULICI (UTENSILI RADIALI PER AZZERAMENTO)  
 PORTAHERRAMIENTAS HIDRAULICO (AJUSTE DE LONGITUD TIPO PRE-SETTING)

**HSK-A**



Unit : mm										
TAPER No.	MODEL No.	EDP No.	d1	D1	D2	L	L1	L2	WEIGHT (Kg)	
40A	HSK40A-HCR6-80	P2770210	6	26	34	80	36	27	0.55	
	HSK40A-HCR8-80	P2770211	8	28	34	80	36	27	0.55	
	HSK40A-HCR10-85	P2770212	10	30	34	85	43	32	0.65	
	HSK40A-HCR12-90	P2770213	12	32	34	90	48	37	0.70	
50A	HSK50A-HCR6-80	P2770214	6	26	40	80	35	27	0.70	
	HSK50A-HCR8-80	P2770215	8	28	40	80	36	27	0.70	
	HSK50A-HCR10-85	P2770216	10	30	40	85	38	32	0.73	
	HSK50A-HCR12-90	P2770217	12	32	40	90	40	37	0.80	
	HSK50A-HCR14-90	P2770218	14	34	40	90	40	42	0.80	
	HSK50A-HCR16-95	P2770219	16	38	53	95	36.5	42	1.00	
	HSK50A-HCR18-95	P2770220	18	40	57	95	36.5	42	1.00	
	HSK50A-HCR20-100	P2770221	20	42	60	100	39	42	1.10	
63A	HSK63A-HCR6-80	P2770205	6	26	50	80	33	27	0.96	
	HSK63A-HCR8-80	P2770206	8	28	50	80	33	27	0.98	
	HSK63A-HCR10-85	P2770207	10	30	50	85	38	32	1.04	
	HSK63A-HCR12-90	P2567011	12	32	50	90	40	37	1.06	
	HSK63A-HCR14-90	P2770202	14	34	50	90	46	37	1.08	
	HSK63A-HCR16-95	P2770209	16	38	50	95	51	42	1.18	
	HSK63A-HCR18-95	P2770203	18	40	50	95	52	42	1.20	
	HSK63A-HCR20-100	P2567012	20	42	50	100	51	42	1.22	
	HSK63A-HCR25-120	P2770204	25	57	63	120	54.5	48	2.20	
	HSK63A-HCR32-125	P2770201	32	64	75	125	57.5	55	2.60	
100A	HSK100A-HCR6-85	P2770222	6	26	63	85	33	27	3.60	
	HSK100A-HCR8-85	P2770223	8	28	63	85	33	27	3.60	
	HSK100A-HCR10-90	P2770224	10	30	63	90	36	32	3.80	
	HSK100A-HCR12-95	P2770225	12	32	63	95	40	37	3.80	
	HSK100A-HCR14-95	P2770226	14	34	63	95	41	37	3.80	
	HSK100A-HCR16-100	P2770227	16	38	63	100	46	42	3.90	
	HSK100A-HCR18-100	P2770228	18	40	63	100	46	42	3.90	
	HSK100A-HCR20-105	P2770229	20	42	75	105	51	42	4.20	
	HSK100A-HCR25-115	P2770230	25	57	75	115	55.5	48	4.40	
	HSK100A-HCR32-120	P2770231	32	64	75	120	63.5	55	4.60	

- ▶ Inch type products are available.
- ▶ Balancing grade G2.5 at 25,000RPM or U max. < 1gmm.
- ▶ Supplied with clamping T-wrench.
- ▶ For applicable Hydraulic Chuck collet, please refer to page D291~D294.

**HYDRAULIC CHUCK (Power E Hydro)**

HYDRAULIK SPANNFUTTER (POWER E HYDRO)  
 MANDRIN HYDRAULIQUE (POWER E HYDRO)  
 MANDRINI IDRAULICI (POWER E HYDRO)  
 PORTAHERRAMIENTAS HIDRAULICO (POWER E HYDRO)

**HSK-A**

FIG.1

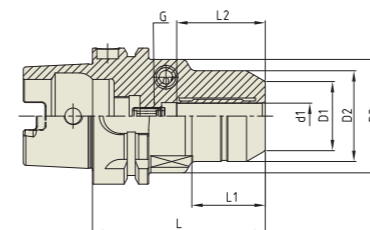
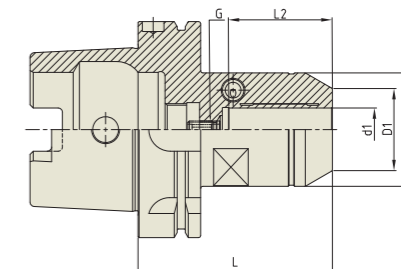


FIG.2



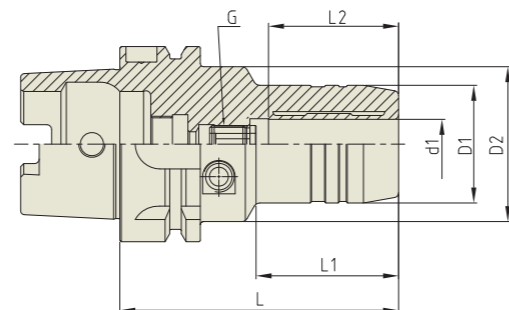
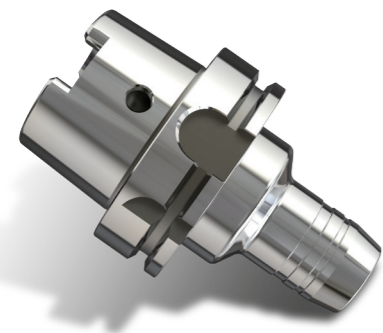
Unit : mm															
TAPER No.	MODEL No.	EDP No.	d1	D1	D2	D3	L	L1	L2	G	FIG.	WEIGHT (Kg)			
63A	HSK63A-HC12P-80	P2770302P	12	32	42	52.5	80	34	41	M8x1.0	1	1.20			
	HSK63A-HC20P-80	P2770301P	20	38	52.5	-	80	-	48	M8x1.0	2	1.30			
100A	HSK100A-HC20P-90	P2770303P	20	38	52.5	-	90	-	48	M8x1.0	2	2.80			
	HSK100A-HC32P-100	P2770304P	32	58.5	72	-	100	-	57	M8x1.0	2	3.70			

- ▶ Inch type products are available.
- ▶ Balancing grade G2.5 at 25,000RPM or U max. < 1gmm.
- ▶ Supplied with clamping T-wrench.
- ▶ For applicable Hydraulic Chuck collet, please refer to page D291~D294.

**HYDRAULIC CHUCK (STANDARD)**

HYDRAULIK SPANNFUTTER (STANDARD)  
 MANDRIN HYDRAULIQUE (STANDARD)  
 MANDRINI IDRAULICI (STANDARD)  
 PORTAHERRAMIENTAS HIDRAULICO (ESTÁNDAR)

**HSK-A**



Unit : mm

TAPER No.	MODEL No.	EDP No.	d1	D1	D2	L	L1	L2	G	WEIGHT (Kg)
32A	HSK32A-HC6-80	P2770413	6	26	40	80	29	27	M5×0.8	0.30
	HSK32A-HC8-80	P2770414	8	28	40	80	29	27	M6×1.0	0.30
	HSK32A-HC10-85	P2770415	10	30	40	85	35	32	M6×1.0	0.30
	HSK32A-HC12-90	P2770416	12	32	40	90	40	37	M6×1.0	0.30
40A	HSK40A-HC6-70	P2770401	6	26	34	70	36	27	M5×0.8	0.50
	HSK40A-HC8-70	P2770402	8	28	34	70	36	27	M6×1.0	0.50
	HSK40A-HC10-75	P2770403	10	30	34	75	42	32	M6×1.0	0.60
	HSK40A-HC12-80	P2770417	12	32	34	80	48	37	M6×1.0	0.65
50A	HSK50A-HC6-70	P2770404	6	26	40	70	28	27	M5×0.8	0.65
	HSK50A-HC8-70	P2770405	8	28	40	70	28	27	M6×1.0	0.65
	HSK50A-HC10-75	P2770406	10	30	40	75	34	32	M8×1.0	0.70
	HSK50A-HC12-85	P2770407	12	32	40	85	44	37	M10×1.0	0.75
	HSK50A-HC14-85	P2770408	14	34	40	85	43	37	M10×1.0	0.75
	HSK50A-HC16-90	P2770409	16	38	53	90	30	42	M12×1.0	0.90
63A	HSK63A-HC6-70	P2567001	6	26	50	70	24	27	M5×0.8	0.53
	HSK63A-HC8-70	P2567002	8	28	50	70	25	27	M6×1.0	0.55
	HSK63A-HC10-80	P2567003	10	30	50	80	35	32	M8×1.0	1.00
	HSK63A-HC12-85	P2567004	12	32	50	85	40	37	M10×1.0	1.03
	HSK63A-HC14-85	P2567005	14	34	50	85	40	37	M10×1.0	1.05
	HSK63A-HC16-90	P2567006	16	38	50	90	46	42	M12×1.0	1.15
	HSK63A-HC18-90	P2567007	18	40	50	90	47	42	M12×1.0	1.15
	HSK63A-HC20-90	P2567008	20	42	50	90	48	42	M16×1.0	1.20
	HSK63A-HC25-120	P2567009	25	57	63	120	59	48	M16×1.0	2.20
	HSK63A-HC32-125	P2567010	32	64	75	125	63	55	M16×1.0	2.40

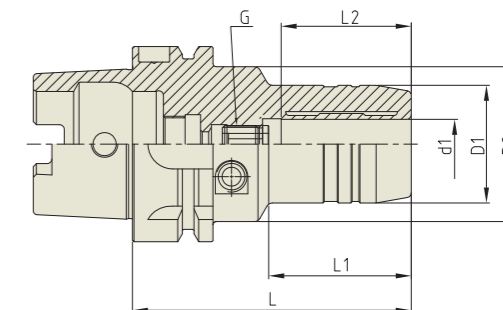
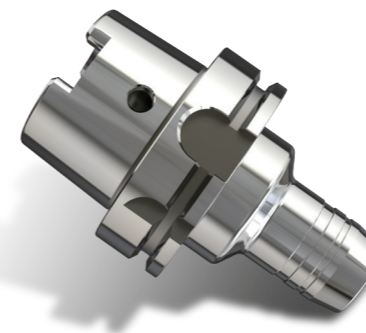
- ▶ Inch type products are available.
- ▶ Balancing grade G2.5 at 25,000RPM or U max. < 1gmm.
- ▶ Supplied with clamping T-wrench.
- ▶ For applicable Hydraulic Chuck collet, please refer to page D291~D294.

▶ NEXT PAGE

**HYDRAULIC CHUCK (STANDARD)**

HYDRAULIK SPANNFUTTER (STANDARD)  
 MANDRIN HYDRAULIQUE (STANDARD)  
 MANDRINI IDRAULICI (STANDARD)  
 PORTAHERRAMIENTAS HIDRAULICO (ESTÁNDAR)

**HSK-A**



Unit : mm

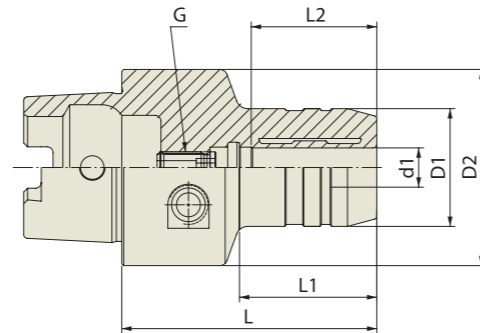
TAPER No.	MODEL No.	EDP No.	d1	D1	D2	L	L1	L2	G	WEIGHT (Kg)
80A	HSK80A-HC12-85	P2770462	12	32	50	85	40	37	M10×1.0	1.60
	HSK80A-HC20-95	P2770463	20	42	50	95	52	42	M16×1.0	1.80
	HSK80A-HC32-125	P2770464	32	64	75	125	63	55	M16×1.0	3.30
100A	HSK100A-HC6-75	P2770420	6	26	50	75	26	27	M5×0.8	3.20
	HSK100A-HC8-75	P2770421	8	28	50	75	26	27	M6×1.0	3.20
	HSK100A-HC10-90	P2770422	10	30	50	90	42	32	M8×1.0	3.40
	HSK100A-HC12-95	P2770410	12	32	50	95	47	37	M10×1.0	3.40
	HSK100A-HC14-95	P2770423	14	34	50	95	47	37	M10×1.0	3.40
	HSK100A-HC16-100	P2770411	16	38	50	100	53	42	M12×1.0	3.50
	HSK100A-HC18-100	P2770424	18	40	50	100	53	42	M12×1.0	3.60
	HSK100A-HC20-105	P2757010	20	42	50	105	59	42	M16×1.0	4.00
	HSK100A-HC25-110	P2770412	25	57	63	110	62	48	M16×1.0	4.20
	HSK100A-HC32-110	P2757020	32	64	75	110	62	55	M16×1.0	4.30

- ▶ Inch type products are available.
- ▶ Balancing grade G2.5 at 25,000RPM or U max. < 1gmm.
- ▶ Supplied with clamping T-wrench.
- ▶ For applicable Hydraulic Chuck collet, please refer to page D291~D294.

**HYDRAULIC CHUCK (STANDARD)**

HYDRAULIK SPANNFUTTER (STANDARD)  
 MANDRIN HYDRAULIQUE (STANDARD)  
 MANDRINI IDRAULICI (STANDARD)  
 PORTAHERRAMIENTAS HIDRAULICO (ESTÁNDAR)

**HSK-C**



Unit : mm

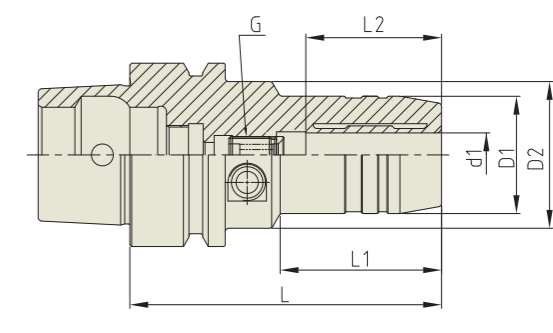
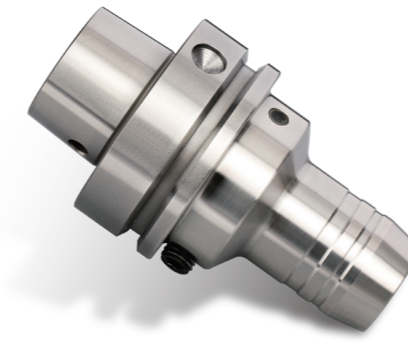
TAPER No.	MODEL No.	EDP No.	d1	D1	D2	L	L1	L2	G	WEIGHT (Kg)
32C	HSK32C-HC6-65	P2770425	6	26	32	65	30	27	M5x0.8	0.30
	HSK32C-HC8-70	P2770426	8	28	32	70	34	27	M6x1.0	0.30
	HSK32C-HC10-75	P2770427	10	30	32	75	39	32	M6x1.0	0.30
	HSK32C-HC12-80	P2770428	12	32	32	80	-	37	M6x1.0	0.30
40C	HSK40C-HC6-60	P2770429	6	26	40	60	36	27	M5x0.8	0.55
	HSK40C-HC8-60	P2770430	8	28	40	60	36	27	M6x1.0	0.55
	HSK40C-HC10-65	P2770431	10	30	40	65	41	32	M6x1.0	0.65
	HSK40C-HC12-70	P2770432	12	32	40	70	47	37	M6x1.0	0.70
50C	HSK50C-HC6-60	P2770433	6	26	50	60	30	27	M5x0.8	0.65
	HSK50C-HC8-60	P2770434	8	28	50	60	30	27	M6x1.0	0.65
	HSK50C-HC10-65	P2770435	10	30	50	65	35	32	M8x1.0	0.70
	HSK50C-HC12-75	P2770436	12	32	50	75	44	37	M10x1.0	0.75
	HSK50C-HC14-75	P2770437	14	34	50	75	46	37	M10x1.0	0.75
	HSK50C-HC16-80	P2770438	16	38	50	80	51	42	M12x1.0	0.90
63C	HSK50C-HC18-80	P2770439	18	40	50	80	51	42	M12x1.0	0.90
	HSK50C-HC20-80	P2770440	20	42	50	80	48	42	M16x1.0	1.00
	HSK63C-HC6-60	P2770441	6	26	63	60	25	27	M5x0.8	0.96
	HSK63C-HC8-60	P2770442	8	28	63	60	25	27	M6x1.0	0.98
	HSK63C-HC10-65	P2770443	10	30	63	65	31	32	M8x1.0	1.04
	HSK63C-HC12-75	P2770444	12	32	63	75	41	37	M10x1.0	1.06
	HSK63C-HC14-75	P2770445	14	34	63	75	42	37	M10x1.0	1.08
	HSK63C-HC16-80	P2770446	16	38	63	80	48	42	M12x1.0	1.18
	HSK63C-HC18-80	P2770447	18	40	63	80	47	42	M12x1.0	1.20
HSK63C-HC20-80	P2770448	20	42	63	80	49	42	M16x1.0	1.22	
	HSK63C-HC25-95	P2770449	25	57	63	95	63	48	M16x1.0	2.20
	HSK63C-HC32-100	P2770450	32	63	63	100	-	55	M16x1.0	2.60

- ▶ Inch type products are available.
- ▶ Balancing grade G2.5 at 25,000RPM or U max. < 1gmm.
- ▶ Supplied with clamping T-wrench.
- ▶ For applicable Hydraulic Chuck collet, please refer to page D291~D294.

**HYDRAULIC CHUCK (STANDARD)**

HYDRAULIK SPANNFUTTER (STANDARD)  
 MANDRIN HYDRAULIQUE (STANDARD)  
 MANDRINI IDRAULICI (STANDARD)  
 PORTAHERRAMIENTAS HIDRAULICO (ESTÁNDAR)

**HSK-E**



Unit : mm

TAPER No.	MODEL No.	EDP No.	d1	D1	D2	L	L1	L2	G	WEIGHT (Kg)
40E	HSK40E-HC6-70	P2770451	6	26	34	70	36	27	M5x0.8	0.55
	HSK40E-HC8-70	P2770452	8	28	34	70	36	27	M6x1.0	0.55
	HSK40E-HC10-75	P2770453	10	30	34	75	42	32	M6x1.0	0.65
	HSK40E-HC12-80	P2770454	12	32	34	80	48	37	M6x1.0	0.70
50E	HSK50E-HC6-70	P2770455	6	26	40	70	28	27	M5x0.8	0.65
	HSK50E-HC8-70	P2770456	8	28	40	70	28	27	M6x1.0	0.65
	HSK50E-HC10-75	P2770457	10	30	40	75	34	32	M8x1.0	0.70
	HSK50E-HC12-85	P2770458	12	32	40	85	44	37	M10x1.0	0.75
	HSK50E-HC16-90	P2770459	16	38	53	90	30	42	M12x1.0	0.90
63F	HSK63F-HC20-85	P2770461	20	42	60	90	29	42	M16x1.0	1.00
			20	42	50	85	46	42	M12x1.0	1.20

- ▶ Inch type products are available.
- ▶ Balancing grade G2.5 at 25,000RPM or U max. < 1gmm.
- ▶ Supplied with clamping T-wrench.
- ▶ For applicable Hydraulic Chuck collet, please refer to page D291~D294.

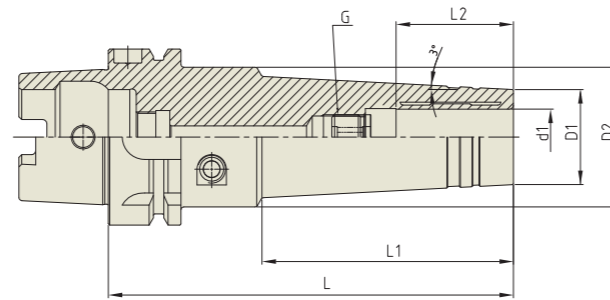
**YG HYDRAULIC CHUCK**

**HMC**

**HYDRAULIC CHUCK (SLIM)**

HYDRAULIK SPANNFUTTER FÜR DEN FORMENBAU  
MANDRIN HYDRAULIQUE POUR MOULISTE  
MANDRINI IDRAULICI PER STAMPAGGIO  
PORTAHERRAMIENTAS HIDRAULICO PARA MOLDES

**HSK-A**



Unit : mm

TAPER No.	MODEL No.	EDP No.	d1	D1	D2	L	L1	L2	G	WEIGHT (Kg)
63A	HSK63A-HMC6-145	P2770801	6	20	50	145	90	27	M5×0.8	1.40
	HSK63A-HMC8-145	P2770802	8	22	50	145	90	27	M6×1.0	1.40
	HSK63A-HMC10-145	P2770803	10	24	50	145	90	32	M8×1.0	1.40
	HSK63A-HMC12-145	P2770804	12	25	50	145	90	37	M10×1.0	1.40
	HSK63A-HMC14-145	P2770814	14	27	50	145	90	37	M10×1.0	1.40
	HSK63A-HMC16-145	P2770805	16	32	50	145	90	42	M12×1.0	1.45
	HSK63A-HMC20-145	P2770806	20	34	50	145	90	42	M16×1.0	1.50
100A	HSK100A-HMC6-150	P2770812	6	20	50	150	90	27	M5×0.8	4.50
	HSK100A-HMC8-150	P2770807	8	22	50	150	90	27	M6×1.0	4.50
	HSK100A-HMC10-150	P2770808	10	24	50	150	90	32	M8×1.0	4.50
	HSK100A-HMC12-150	P2770809	12	25	50	150	90	37	M10×1.0	4.50
	HSK100A-HMC14-150	P2770815	14	27	50	150	90	37	M10×1.0	4.50
	HSK100A-HMC16-150	P2770810	16	32	50	150	90	42	M12×1.0	4.70
	HSK100A-HMC20-150	P2770811	20	34	50	150	90	42	M16×1.0	5.00

- ▶ Inch type products are available.
- ▶ Balancing grade G2.5 at 25,000RPM or U max. < 1gmm.
- ▶ Supplied with clamping T-wrench.
- ▶ For applicable Hydraulic Chuck collet, please refer to page D291~D294.

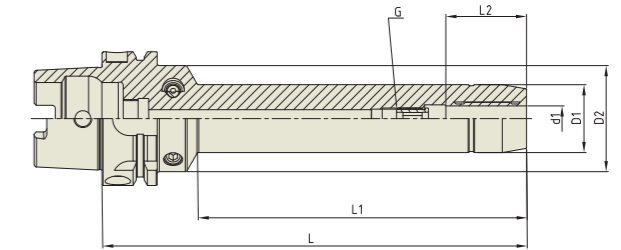
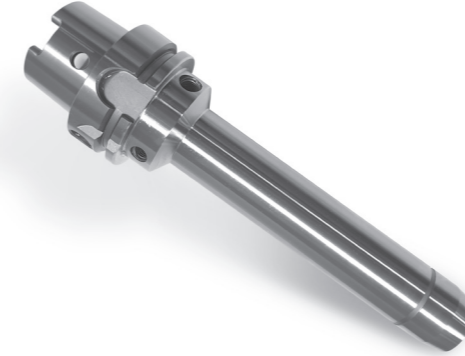
**YG HYDRAULIC CHUCK**

**HC-LS**

**HYDRAULIC CHUCK (LONG & SLIM)**

HYDRAULIK SPANNFUTTER (LANG & SCHLANK)  
MANDRIN HYDRAULIQUE (LONGUE ET MINCE)  
MANDRINI IDRAULICI (LUNGO E SOTTILE)  
PORTAHERRAMIENTAS HIDRAULICO (LARGO Y DELGADO)

**HSK-A**



Unit : mm

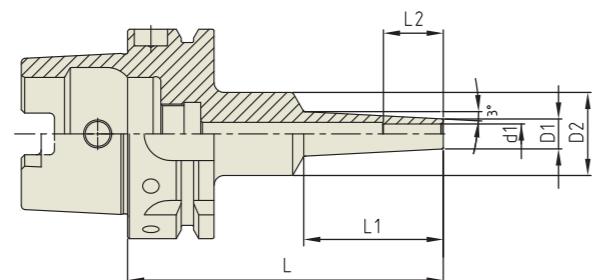
TAPER No.	MODEL No.	EDP No.	d1	D1	D2	L	L1	L2	G	WEIGHT (Kg)
63A	HSK63A-HC6LS-150	P2770483	6	26	50	150	103	25	M5×0.8	1.40
	HSK63A-HC6LS-200	P2770484	6	26	50	200	153	25	M5×0.8	1.60
	HSK63A-HC8LS-150	P2770485	8	28	50	150	104	25	M6×1.0	1.40
	HSK63A-HC8LS-200	P2770486	8	28	50	200	154	25	M6×1.0	1.60
	HSK63A-HC10LS-150	P2770487	10	30	50	150	104	29	M8×1.0	1.50
	HSK63A-HC10LS-200	P2770488	10	30	50	200	154	29	M8×1.0	1.70
	HSK63A-HC12LS-150	P2770489	12	32	50	150	105	34	M10×1.0	1.50
	HSK63A-HC12LS-200	P2770490	12	32	50	200	155	34	M10×1.0	1.80
	HSK63A-HC14LS-150	P2770491	14	34	50	150	105	34.5	M10×1.0	1.60
	HSK63A-HC16LS-150	P2770492	16	38	50	150	106	39	M12×1.0	1.80
	HSK63A-HC16LS-200	P2770493	16	38	50	200	156	39	M12×1.0	2.20
	HSK63A-HC18LS-150	P2770494	18	40	50	150	107	40.5	M12×1.0	1.80
	HSK63A-HC20LS-150	P2770495	20	42	50	150	108	40.5	M16×1.0	1.90
	HSK63A-HC20LS-200	P2770496	20	42	50	200	158	40.5	M16×1.0	2.40

- ▶ Balancing grade G2.5 at 25,000RPM or U max. < 1gmm.
- ▶ Supplied with clamping T-wrench.
- ▶ For applicable Hydraulic Chuck collet, please refer to page D291~D294.

**SHRINK FIT HOLDER (EXTRA SLIM)**

SCHRUMPFUTTER  
MANDRIN DE FRETAGE  
MADRINI PER CALLETAMENTO A CALDO  
PORTAHERRAMIENTAS DE COMPRESION POR CALOR

HSK-A



Unit : mm									
TAPER No.	MODEL No.	EDP No.	d1	D1	D2	L	L1	L2	WEIGHT (Kg)
40A	HSK40A-SFHS3-60	P2779801S	3	6	20	60	22	9	-
	HSK40A-SFHS3-90	P2779802S	3	6	25	80	42	9	-
	HSK40A-SFHS4-60	P2779803S	4	7	20	60	22	12	-
	HSK40A-SFHS4-90	P2779804S	4	7	25	80	42	12	-
	HSK40A-SFHS6-60	P2779805S	6	9	20	60	22	18	-
	HSK40A-SFHS6-90	P2779806S	6	9	25	80	42	18	-
50A	HSK50A-SFHS3-95	P2779807S	3	6	25	95	42	9	-
	HSK50A-SFHS3-120	P2779808S	3	6	25	120	67	9	-
	HSK50A-SFHS4-95	P2779809S	4	7	25	95	42	12	-
	HSK50A-SFHS4-120	P2779810S	4	7	25	120	67	12	-
	HSK50A-SFHS6-95	P2779811S	6	9	25	95	42	18	-
	HSK50A-SFHS6-120	P2779812S	6	9	25	120	67	18	-
	HSK50A-SFHS8-95	P2779813S	8	11	32	95	42	24	-
	HSK50A-SFHS8-120	P2779814S	8	11	32	120	67	24	-
	HSK50A-SFHS10-95	P2779815S	10	13	32	95	42	30	-
	HSK50A-SFHS10-120	P2779816S	10	13	32	120	67	30	-
63A	HSK63A-SFHS3-95	P2779817S	3	6	25	95	42	9	0.75
	HSK63A-SFHS3-120	P2779818S	3	6	25	120	67	9	0.77
	HSK63A-SFHS4-95	P2779819S	4	7	25	95	42	12	0.75
	HSK63A-SFHS4-120	P2779820S	4	7	25	120	67	12	0.78
	HSK63A-SFHS6-95	P2779821S	6	9	25	95	42	18	0.76
	HSK63A-SFHS6-120	P2779822S	6	9	25	120	97	18	0.78
	HSK63A-SFHS8-95	P2779823S	8	11	25	95	42	24	0.75
	HSK63A-SFHS8-160	P2779824S	8	11	32	160	97	24	0.97
	HSK63A-SFHS10-95	P2779825S	10	13	25	95	42	30	0.76
	HSK63A-SFHS10-160	P2779826S	10	13	32	160	97	30	1.00
	HSK63A-SFHS12-95	P2779827S	12	15	32	95	42	30	0.83
	HSK63A-SFHS12-160	P2779828S	12	15	32	160	97	30	1.04

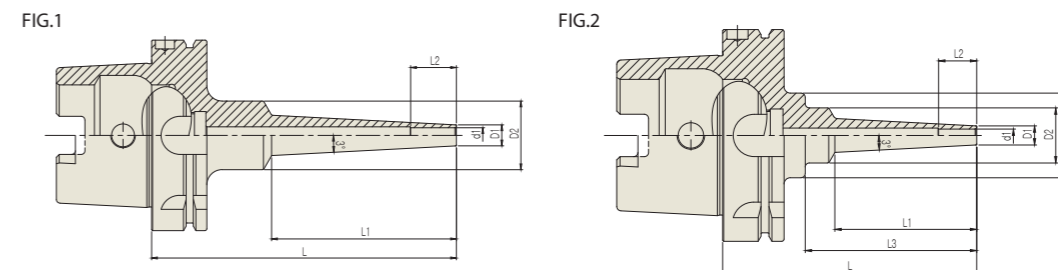
► Inch type products are available.  
► Balancing grade G2.5 at 25,000RPM or U max. < 1gmm.

► NEXT PAGE

**SHRINK FIT HOLDER (EXTRA SLIM)**

SCHRUMPFUTTER  
MANDRIN DE FRETAGE  
MADRINI PER CALLETAMENTO A CALDO  
PORTAHERRAMIENTAS DE COMPRESION POR CALOR

HSK-A



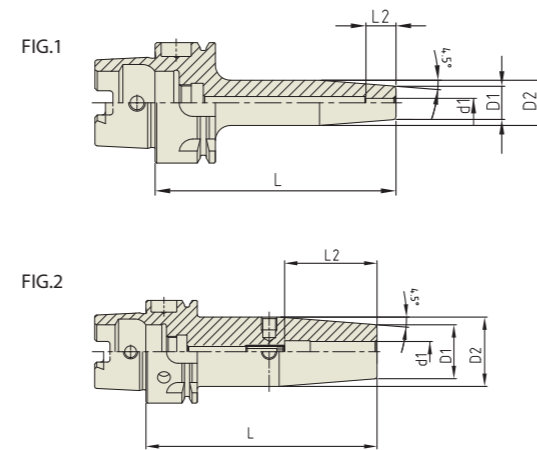
Unit : mm												
TAPER No.	MODEL No.	EDP No.	d1	D1	D2	D2	L	L1	L2	L3	FIG.	WEIGHT (Kg)
100A	HSK100A-SFHS3-95	P2779829S	3	6	26	40	95	42	9	56	2	2.12
	HSK100A-SFHS3-120	P2779830S	3	6	26	40	120	67	9	81	2	2.14
	HSK100A-SFHS4-95	P2779831S	4	7	26	40	95	42	12	56	2	2.12
	HSK100A-SFHS4-120	P2779832S	4	7	26	40	120	67	12	81	2	2.14
	HSK100A-SFHS6-95	P2779833S	6	9	26	40	95	42	18	56	2	2.12
	HSK100A-SFHS6-120	P2779834S	6	9	26	40	120	67	18	81	2	2.15
	HSK100A-SFHS8-95	P2779835S	8	11	36	-	95	42	24	-	1	2.18
	HSK100A-SFHS8-160	P2779836S	8	11	36	-	160	97	24	-	1	2.33
	HSK100A-SFHS10-95	P2779837S	10	13	36	-	95	42	31	-	1	2.19
	HSK100A-SFHS10-160	P2779838S	10	13	36	-	160	97	31	-	1	2.34
	HSK100A-SFHS12-95	P2779839S	12	15	36	-	95	42	32	-	1	2.20
	HSK100A-SFHS12-160	P2779840S	12	15	36	-	160	97	32	-	1	2.38

► Inch type products are available.  
► Balancing grade G2.5 at 25,000RPM or U max. < 1gmm.

**SHRINK FIT HOLDER**

SCHRUMPFUTTER  
MANDRIN DE FRETTAGE  
MADRINI PER CALLETAMENTO A CALDO  
PORTAHERRAMIENTAS DE COMPRESION POR CALOR

HSK-A



Unit : mm

TAPER No.	MODEL No.	EDP No.	d1	D1	D2	L	L2	G	FIG.	WEIGHT (Kg)
40A	HSK40A-SFH3-60	P2771408	3	11	15	60	10	-	1	0.30
	HSK40A-SFH3-80	P2771409	3	11	15	80	10	-	1	0.40
	HSK40A-SFH4-60	P2771410	4	11	15	60	12	-	1	0.30
	HSK40A-SFH4-80	P2771411	4	11	15	80	12	-	1	0.40
	HSK40A-SFH5-60	P2771412	5	11	15	60	15	-	1	0.30
	HSK40A-SFH5-80	P2771413	5	11	15	80	15	-	1	0.40
	HSK40A-SFH6-60	P2771414	6	21	27	60	36	M5×0.8	2	0.40
	HSK40A-SFH6-80	P2771415	6	21	27	80	36	M5×0.8	2	0.50
	HSK40A-SFH8-70	P2771416	8	21	27	70	36	M5×0.8	2	0.40
	HSK40A-SFH8-90	P2771417	8	21	27	90	36	M5×0.8	2	0.50
	HSK40A-SFH10-70	P2771418	10	24	32	70	42	M5×0.8	2	0.50
	HSK40A-SFH10-90	P2771419	10	24	32	90	42	M5×0.8	2	0.60
50A	HSK50A-SFH3-80	P2771444	3	11	15	80	10	-	1	0.54
	HSK50A-SFH4-80	P2771445	4	11	15	80	12	-	1	0.55
	HSK50A-SFH5-80	P2771446	5	11	15	80	15	-	1	0.56
	HSK50A-SFH6-80	P2776901	6	21	27	80	36	M5×0.8	2	0.57
	HSK50A-SFH8-80	P2771447	8	21	27	80	36	M6×1.0	2	0.58
	HSK50A-SFH10-85	P2771448	10	24	32	85	42	M8×1.0	2	0.65
	HSK50A-SFH12-90	P2771449	12	24	32	90	47	M10×1.0	2	0.67
	HSK50A-SFH14-90	P2771450	14	27	34	90	47	M10×1.0	2	0.72
	HSK50A-SFH16-95	P2771451	16	27	34	95	50	M12×1.0	2	0.73
	HSK50A-SFH18-95	P2771452	18	33	42	95	50	M12×1.0	2	0.9
	HSK50A-SFH20-100	P2771453	20	33	42	100	52	M16×1.0	2	0.92

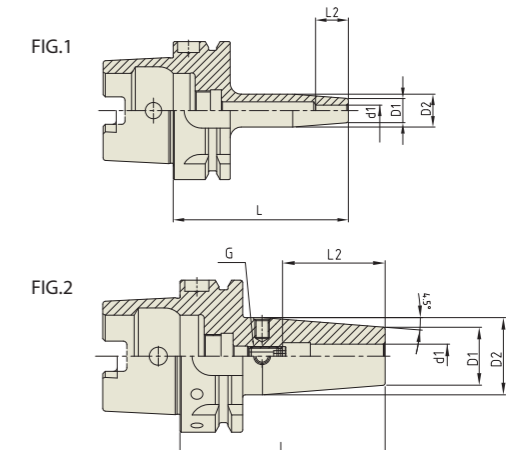
- ▶ Inch type products are available.
- ▶ Supplied without balancing screws.
- ▶ Balancing grade G2.5 at 25,000RPM or U max. < 1gmm.

▶ NEXT PAGE

**SHRINK FIT HOLDER**

SCHRUMPFUTTER  
MANDRIN DE FRETTAGE  
MADRINI PER CALLETAMENTO A CALDO  
PORTAHERRAMIENTAS DE COMPRESION POR CALOR

HSK-A



Unit : mm

TAPER No.	MODEL No.	EDP No.	d1	D1	D2	L	L2	G	FIG.	WEIGHT (Kg)
63A	HSK63A-SFH3-80	P2771401	3	11	15	80	10	-	1	0.70
	HSK63A-SFH4-80	P2771402	4	11	15	80	12	-	1	0.70
	HSK63A-SFH5-80	P2771403	5	11	15	80	15	-	1	0.70
	HSK63A-SFH6-80	P2565057	6	21	27	80	36	M5×0.8	2	0.83
	HSK63A-SFH6-130	P2860046	6	21	27	130	36	M5×0.8	2	-
	HSK63A-SFH6-160	P2771404	6	21	27	160	36	M5×0.8	2	1.00
	HSK63A-SFH8-80	P2600007	8	21	27	80	36	M6×1.0	2	0.83
	HSK63A-SFH8-130	P2860047	8	21	27	130	36	M6×1.0	2	-
	HSK63A-SFH8-160	P2771405	8	21	27	160	36	M6×1.0	2	1.00
	HSK63A-SFH10-85	P2565052	10	24	32	85	42	M8×1.0	2	0.83
	HSK63A-SFH10-130	P2860048	10	24	32	130	42	M8×1.0	2	-
	HSK63A-SFH10-160	P2771406	10	24	32	160	42	M8×1.0	2	1.00
	HSK63A-SFH12-90	P2600003	12	24	32	90	47	M10×1.0	2	0.83
	HSK63A-SFH12-130	P2860049	12	24	32	130	47	M10×1.0	2	-
	HSK63A-SFH12-160	P2771407	12	24	32	160	47	M10×1.0	2	1.00
	HSK63A-SFH14-90	P2771454	14	27	34	90	47	M10×1.0	2	0.91
	HSK63A-SFH14-130	P2860050	14	27	34	130	47	M10×1.0	2	-
	HSK63A-SFH14-160	P2771455	14	27	34	160	47	M10×1.0	2	1.30
	HSK63A-SFH16-95	P2565054	16	27	34	95	50	M12×1.0	2	0.98
	HSK63A-SFH16-130	P2860051	16	27	34	130	50	M12×1.0	2	-
	HSK63A-SFH16-160	P2565053	16	27	34	160	50	M12×1.0	2	1.40
	HSK63A-SFH18-95	P2771456	18	33	42	95	50	M12×1.0	2	0.98
	HSK63A-SFH18-130	P2860052	18	33	42	130	50	M12×1.0	2	-
	HSK63A-SFH18-160	P2771457	18	33	42	160	50	M12×1.0	2	1.40
	HSK63A-SFH20-100	P2600005	20	33	42	100	52	M16×1.0	2	1.00
	HSK63A-SFH20-130	P2860053	20	33	42	130	52	M16×1.0	2	-
	HSK63A-SFH20-160	P2565055	20	33	42	160	52	M16×1.0	2	1.40
	HSK63A-SFH25-115	P2771458	25	44	53	115	58	M16×1.0	2	1.40
	HSK63A-SFH25-130	P2860054	25	44	53	130	58	M16×1.0	2	-
	HSK63A-SFH25-160	P2771459	25	44	53	160	58	M16×1.0	2	1.80

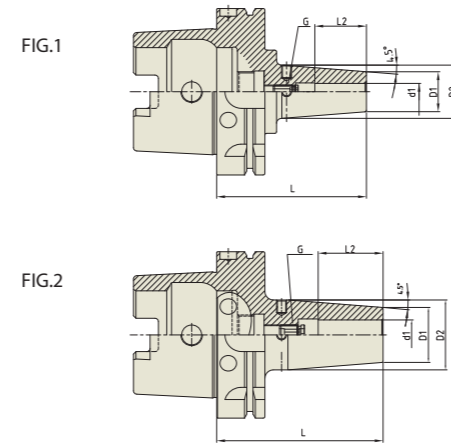
- ▶ Inch type products are available.
- ▶ Supplied without balancing screws.
- ▶ Balancing grade G2.5 at 25,000RPM or U max. < 1gmm.

▶ NEXT PAGE

**SHRINK FIT HOLDER**

SCHRUMPFUTTER  
MANDRIN DE FRETTAGE  
MADRINI PER CALLETAMENTO A CALDO  
PORTAHERRAMIENTAS DE COMPRESION POR CALOR

HSK-A



Unit : mm

TAPER No.	MODEL No.	EDP No.	d1	D1	D2	L	L2	G	FIG.	WEIGHT (Kg)
80A	HSK80A-SFH6-85	P2771460	6	21	27	85	36	M5x0.8	1	-
	HSK80A-SFH8-85	P2771461	8	21	27	85	36	M6x1.0	1	-
	HSK80A-SFH10-90	P2771462	10	24	32	90	41	M8x1.0	2	-
	HSK80A-SFH12-95	P2771463	12	24	32	95	46	M10x1.0	2	-
	HSK80A-SFH14-95	P2771464	14	27	34	95	46	M10x1.0	2	-
	HSK80A-SFH16-100	P2771465	16	27	34	100	49	M12x1.0	2	-
	HSK80A-SFH18-100	P2771466	18	33	42	100	49	M12x1.0	2	-
	HSK80A-SFH20-105	P2771467	20	33	42	105	51	M16x1.0	2	-
	HSK80A-SFH25-115	P2771468	25	44	53	115	57	M16x1.0	2	-
100A	HSK100A-SFH3-85	P2771469	3	11	15	85	10	-	1	1.30
	HSK100A-SFH4-85	P2771470	4	11	15	85	12	-	1	1.30
	HSK100A-SFH5-85	P2771471	5	11	15	85	15	-	1	1.30
	HSK100A-SFH6-85	P2777301	6	21	27	85	36	M5x0.8	1	1.30
	HSK100A-SFH6-130	P2860055	6	21	27	130	36	M5x0.8	1	-
	HSK100A-SFH6-160	P2771472	6	21	27	160	36	M5x0.8	1	1.80
	HSK100A-SFH6-200	P2860006	6	21	27	200	36	M5x0.8	1	-
	HSK100A-SFH8-85	P2777302	8	21	27	85	36	M6x1.0	1	1.30
	HSK100A-SFH8-130	P2860056	8	21	27	130	36	M6x1.0	1	-
	HSK100A-SFH8-160	P2771473	8	21	27	160	36	M6x1.0	1	1.80
	HSK100A-SFH8-200	P2860007	8	21	27	200	36	M6x1.0	1	-
	HSK100A-SFH10-90	P2777303	10	24	32	90	42	M8x1.0	1	1.30
	HSK100A-SFH10-130	P2860057	10	24	32	130	42	M8x1.0	1	-
	HSK100A-SFH10-160	P2771474	10	24	32	160	42	M8x1.0	1	1.80
	HSK100A-SFH10-200	P2860008	10	24	32	200	42	M8x1.0	1	-
	HSK100A-SFH12-95	P2777304	12	24	32	95	47	M10x1.0	1	1.30
	HSK100A-SFH12-130	P2860058	12	24	32	130	47	M10x1.0	1	-
	HSK100A-SFH12-160	P2771475	12	24	32	160	47	M10x1.0	1	1.80
	HSK100A-SFH12-200	P2860009	12	24	32	200	47	M10x1.0	1	-

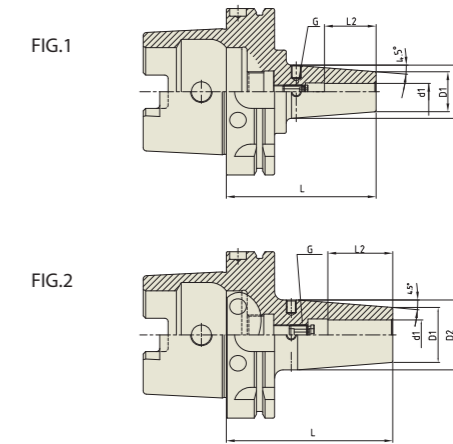
- ▶ Inch type products are available.
- ▶ Supplied without balancing screws.
- ▶ Balancing grade G2.5 at 25,000RPM or U max. < 1gmm.

▶ NEXT PAGE

**SHRINK FIT HOLDER**

SCHRUMPFUTTER  
MANDRIN DE FRETTAGE  
MADRINI PER CALLETAMENTO A CALDO  
PORTAHERRAMIENTAS DE COMPRESION POR CALOR

HSK-A



Unit : mm

TAPER No.	MODEL No.	EDP No.	d1	D1	D2	L	L2	G	FIG.	WEIGHT (Kg)
100A	HSK100A-SFH14-95	P2771476	14	27	34	95	47	M10x1.0	1	1.40
	HSK100A-SFH14-130	P2860059	14	27	34	130	47	M10x1.0	1	-
	HSK100A-SFH14-160	P2771477	14	27	34	160	47	M10x1.0	1	1.90
	HSK100A-SFH14-200	P2860060	14	27	34	200	47	M10x1.0	1	-
	HSK100A-SFH16-100	P2771478	16	27	34	100	50	M12x1.0	1	1.40
	HSK100A-SFH16-130	P2860061	16	27	34	130	50	M12x1.0	1	-
	HSK100A-SFH16-160	P2771479	16	27	34	160	50	M12x1.0	1	1.90
	HSK100A-SFH16-200	P2860062	16	27	34	200	50	M12x1.0	1	-
	HSK100A-SFH18-100	P2771480	18	33	42	100	50	M12x1.0	2	1.50
	HSK100A-SFH18-130	P2860063	18	33	42	130	50	M12x1.0	2	-
	HSK100A-SFH18-160	P2771481	18	33	42	160	50	M12x1.0	2	2.00
	HSK100A-SFH18-200	P2860064	18	33	42	200	50	M12x1.0	2	-
	HSK100A-SFH20-100	P2771482	20	33	42	100	52	M16x1.0	2	1.50
	HSK100A-SFH20-130	P2860065	20	33	42	130	52	M16x1.0	2	-
	HSK100A-SFH20-160	P2771483	20	33	42	160	52	M16x1.0	2	2.00
	HSK100A-SFH20-200	P2860066	20	33	42	200	52	M16x1.0	2	-
	HSK100A-SFH25-115	P2771484	25	44	53	115	58	M16x1.0	2	1.80
	HSK100A-SFH25-130	P2860067	25	44	53	130	58	M16x1.0	2	-
	HSK100A-SFH25-160	P2771485	25	44	53	160	58	M16x1.0	2	2.30
	HSK100A-SFH25-200	P2860068	25	44	53	200	58	M16x1.0	2	-

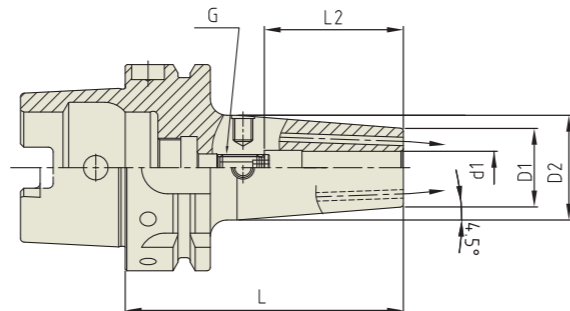
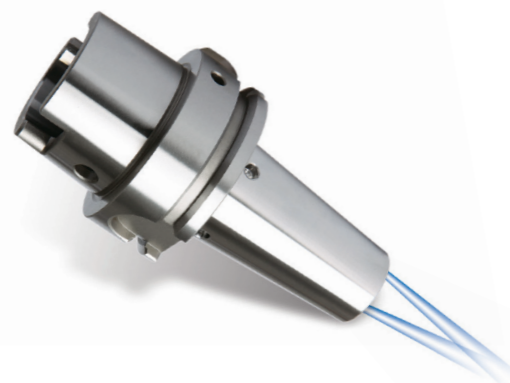
- ▶ Inch type products are available.
- ▶ Supplied without balancing screws.
- ▶ Balancing grade G2.5 at 25,000RPM or U max. < 1gmm.



**SHRINK FIT HOLDER (COOLANT CHANNEL)**

SCHRUMPFUTTER  
MANDRIN DE FRETAGE  
MADRINI PER CALLETAMENTO A CALDO  
PORTAHERRAMIENTAS DE COMPRESION POR CALOR

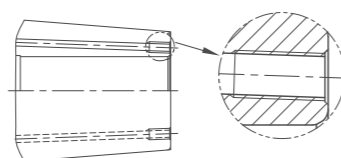
HSK-A



Unit : mm

TAPER No.	MODEL No.	EDP No.	d1	D1	D2	L	L2	G	WEIGHT (Kg)
63A	HSK63A-SFH3C-80*1	P2862131C	3	12	17	80	10	-	-
	HSK63A-SFH4C-80*1	P2862132C	4	12	17	80	12	-	-
	HSK63A-SFH5C-80*1	P2862133C	5	12	17	80	15	-	-
	HSK63A-SFH6C-80	P2862013C	6	21	27	80	36	M5x0.8	0.83
	HSK63A-SFH6C-130	P2863400C	6	21	27	130	36	M5x0.8	-
	HSK63A-SFH6C-160	P2862014C	6	21	27	160	36	M5x0.8	1.00
	HSK63A-SFH8C-80	P2862015C	8	21	27	80	36	M6x1.0	0.83
	HSK63A-SFH8C-130	P2863401C	8	21	27	130	36	M6x1.0	-
	HSK63A-SFH8C-160	P2862016C	8	21	27	160	36	M6x1.0	1.00
	HSK63A-SFH10C-85	P2862017C	10	24	32	85	42	M8x1.0	0.83
	HSK63A-SFH10C-130	P2863402C	10	24	32	130	42	M8x1.0	-
	HSK63A-SFH10C-160	P2862018C	10	24	32	160	42	M8x1.0	1.00
	HSK63A-SFH12C-90	P2862019C	12	24	32	90	47	M10x1.0	0.83
	HSK63A-SFH12C-130	P2863403C	12	24	32	130	47	M10x1.0	-
	HSK63A-SFH12C-160	P2862020C	12	24	32	160	47	M10x1.0	1.00
	HSK63A-SFH14C-90	P2862021C	14	27	34	90	47	M10x1.0	0.91
	HSK63A-SFH14C-130	P2863404C	14	27	34	130	47	M10x1.0	-
	HSK63A-SFH14C-160	P2862022C	14	27	34	160	47	M10x1.0	1.30
	HSK63A-SFH16C-95	P2862023C	16	27	34	95	50	M12x1.0	0.98
	HSK63A-SFH16C-130	P2863405C	16	27	34	130	50	M12x1.0	-
	HSK63A-SFH16C-160	P2862024C	16	27	34	160	50	M12x1.0	1.40
	HSK63A-SFH18C-95	P2862025C	18	33	42	95	50	M12x1.0	0.98
	HSK63A-SFH18C-130	P2863406C	18	33	42	130	50	M12x1.0	-
	HSK63A-SFH18C-160	P2862026C	18	33	42	160	50	M12x1.0	1.40
	HSK63A-SFH20C-100	P2862027C	20	33	42	100	52	M16x1.0	1.00
HSK63A-SFH20C-130	P2863407C	20	33	42	130	52	M16x1.0	-	
HSK63A-SFH20C-160	P2862028C	20	33	42	160	52	M16x1.0	1.40	
HSK63A-SFH25C-115	P2862029C	25	44	53	115	58	M16x1.0	1.40	
HSK63A-SFH25C-130	P2862142C	25	44	53	130	58	M16x1.0	-	
HSK63A-SFH25C-160	P2862030C	25	44	53	160	58	M16x1.0	1.80	

- ▶ Inch type products are available.
- ▶ Supplied without balancing screws.
- ▶ Balancing grade G2.5 at 25,000RPM or U max. < 1gmm.
- ▶ With two coolant channel bores.
- ▶ Resealable coolant channel type is available upon request. (Thread for plugging screw & 2 screws)
- ▶ \*1 Resealable type is not available.

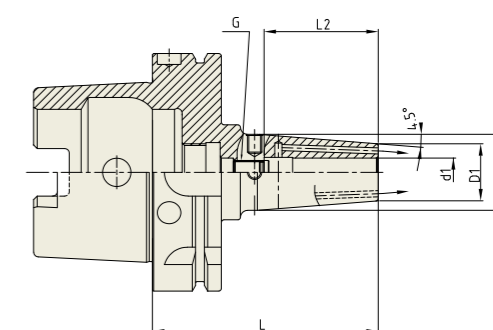
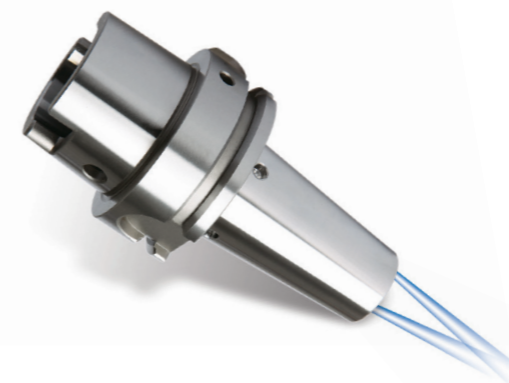


▶ NEXT PAGE

**SHRINK FIT HOLDER (COOLANT CHANNEL)**

SCHRUMPFUTTER  
MANDRIN DE FRETAGE  
MADRINI PER CALLETAMENTO A CALDO  
PORTAHERRAMIENTAS DE COMPRESION POR CALOR

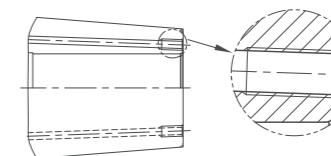
HSK-A



Unit : mm

TAPER No.	MODEL No.	EDP No.	d1	D1	D2	L	L2	G	WEIGHT (Kg)
100A	HSK100A-SFH3C-85*1	P2862143C	3	12	17	85	10	-	-
	HSK100A-SFH4C-85*1	P2862144C	4	12	17	85	12	-	-
	HSK100A-SFH5C-85*1	P2862145C	5	12	17	85	15	-	-
	HSK100A-SFH6C-85	P2862031C	6	21	27	85	36	M5x0.8	1.30
	HSK100A-SFH6C-130	P2863408C	6	21	27	130	36	M5x0.8	-
	HSK100A-SFH6C-160	P2862032C	6	21	27	160	36	M5x0.8	1.80
	HSK100A-SFH6C-200	P2863409C	6	21	27	200	36	M5x0.8	-
	HSK100A-SFH8C-85	P2862033C	8	21	27	85	36	M6x1.0	1.30
	HSK100A-SFH8C-130	P2863410C	8	21	27	130	36	M6x1.0	-
	HSK100A-SFH8C-160	P2862034C	8	21	27	160	36	M6x1.0	1.80
	HSK100A-SFH8C-200	P2863411C	8	21	27	200	36	M6x1.0	-
	HSK100A-SFH10C-90	P2862035C	10	24	32	90	42	M8x1.0	1.30
	HSK100A-SFH10C-130	P2863412C	10	24	32	130	42	M8x1.0	-
	HSK100A-SFH10C-160	P2862036C	10	24	32	160	42	M8x1.0	1.80
	HSK100A-SFH10C-200	P2863413C	10	24	32	200	42	M8x1.0	-
	HSK100A-SFH12C-95	P2862037C	12	24	32	95	47	M10x1.0	1.30
	HSK100A-SFH12C-130	P2863414C	12	24	32	130	47	M10x1.0	-
	HSK100A-SFH12C-160	P2862038C	12	24	32	160	47	M10x1.0	1.80
	HSK100A-SFH12C-200	P2863415C	12	24	32	200	47	M10x1.0	-
	HSK100A-SFH14C-95	P2862039C	14	27	34	95	47	M10x1.0	1.40
	HSK100A-SFH14C-130	P2863416C	14	27	34	130	47	M10x1.0	-
	HSK100A-SFH14C-160	P2862040C	14	27	34	160	47	M10x1.0	1.90
	HSK100A-SFH14C-200	P2863417C	14	27	34	200	47	M10x1.0	-
	HSK100A-SFH16C-100	P2862041C	16	27	34	100	50	M12x1.0	1.40
	HSK100A-SFH16C-130	P2863418C	16	27	34	130	50	M12x1.0	-
HSK100A-SFH16C-160	P2862042C	16	27	34	160	50	M12x1.0	1.90	
HSK100A-SFH16C-200	P2863419C	16	27	34	200	50	M12x1.0	-	

- ▶ Inch type products are available.
- ▶ Supplied without balancing screws.
- ▶ Balancing grade G2.5 at 25,000RPM or U max. < 1gmm.
- ▶ With two coolant channel bores.
- ▶ Resealable coolant channel type is available upon request. (Thread for plugging screw & 2 screws)
- ▶ \*1 Resealable type is not available.

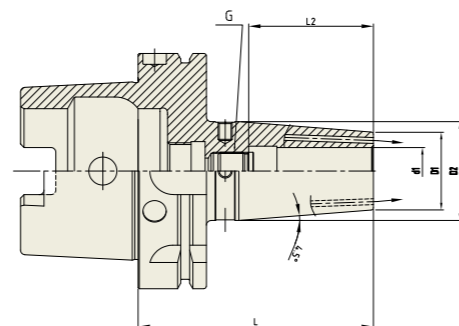
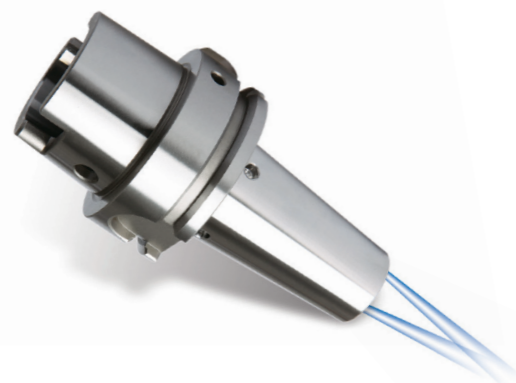


▶ NEXT PAGE

**SHRINK FIT HOLDER (COOLANT CHANNEL)**

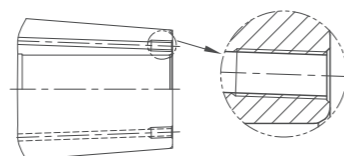
SCHRUMPFUTTER  
MANDRIN DE FRETAGE  
MADRINI PER CALLETAMENTO A CALDO  
PORTAHERRAMIENTAS DE COMPRESION POR CALOR

**HSK-A**



Unit : mm									
TAPER No.	MODEL No.	EDP No.	d1	D1	D2	L	L2	G	WEIGHT (Kg)
100A	HSK100A-SFH18C-100	P2862043C	18	33	42	100	50	M12x1.0	1.50
	HSK100A-SFH18C-130	P2863420C	18	33	42	130	50	M12x1.0	-
	HSK100A-SFH18C-160	P2862044C	18	33	42	160	50	M12x1.0	2.00
	HSK100A-SFH18C-200	P2863421C	18	33	42	200	50	M12x1.0	-
	HSK100A-SFH20C-100	P2862045C	20	33	42	100	52	M16x1.0	1.50
	HSK100A-SFH20C-130	P2863422C	20	33	42	130	52	M16x1.0	-
	HSK100A-SFH20C-160	P2862046C	20	33	42	160	52	M16x1.0	2.00
	HSK100A-SFH20C-200	P2863423C	20	33	42	200	52	M16x1.0	-
	HSK100A-SFH25C-115	P2862047C	25	44	53	115	58	M16x1.0	1.80
	HSK100A-SFH25C-130	P2863424C	25	44	53	130	58	M16x1.0	-
	HSK100A-SFH25C-160	P2862048C	25	44	53	160	58	M16x1.0	2.30
	HSK100A-SFH25C-200	P2863425C	25	44	53	200	58	M16x1.0	-

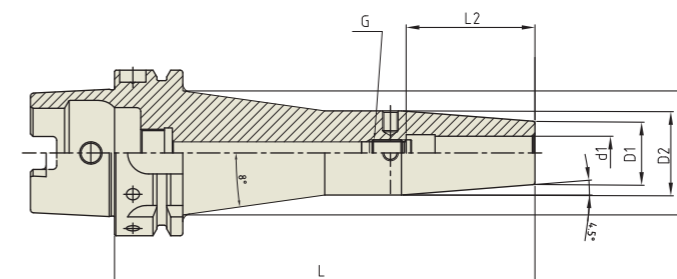
- ▶ Inch type products are available.
- ▶ Supplied without balancing screws.
- ▶ Balancing grade G2.5 at 25,000RPM or U max. < 1gmm.
- ▶ With two coolant channel bores.
- ▶ Resealable coolant channel type is available upon request. (Thread for plugging screw & 2 screws)



**SHRINK FIT HOLDER (REINFORCED)**

SCHRUMPFUTTER  
MANDRIN DE FRETAGE  
MADRINI PER CALLETAMENTO A CALDO  
PORTAHERRAMIENTAS DE COMPRESION POR CALOR

**HSK-A**



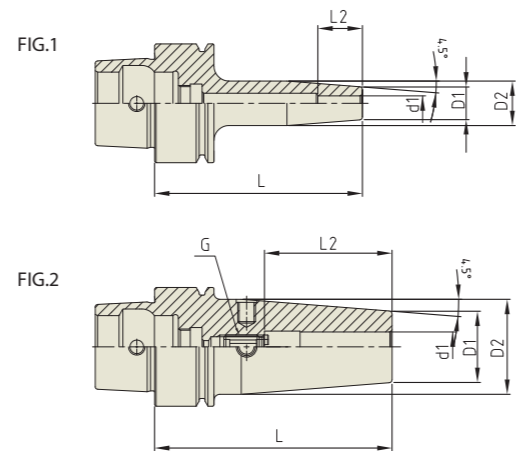
Unit : mm										
TAPER No.	MODEL No.	EDP No.	d1	D1	D2	D3	L	L2	G	WEIGHT (Kg)
63A	HSK63A-SFH6 TW-160	P2801501TW	6	21	27	42.2	160	36	M5x0.8	1.36
	HSK63A-SFH8 TW-160	P2801502TW	8	21	27	42.2	160	36	M6x1.0	1.35
	HSK63A-SFH10 TW-160	P2801503TW	10	24	32	47.2	160	42	M8x1.0	1.56
	HSK63A-SFH12 TW-160	P2801504TW	12	24	32	47.2	160	47	M10x1.0	1.55
	HSK63A-SFH14 TW-160	P2801505TW	14	27	34	49.2	160	47	M10x1.0	1.52
	HSK63A-SFH16 TW-160	P2801506TW	16	27	34	49.2	160	50	M12x1.0	1.64
100A	HSK100A-SFH6 TW-160	P2801507TW	6	21	27	41.3	160	36	M5x0.8	2.73
	HSK100A-SFH8 TW-160	P2801508TW	8	21	27	41.3	160	36	M6x1.0	2.72
	HSK100A-SFH10 TW-160	P2801509TW	10	24	32	46.3	160	42	M8x1.0	2.92
	HSK100A-SFH12 TW-160	P2801510TW	12	24	32	46.3	160	47	M10x1.0	2.9
	HSK100A-SFH14 TW-160	P2801511TW	14	27	34	48.3	160	47	M10x1.0	3.05
	HSK100A-SFH16 TW-160	P2801512TW	16	27	34	48.3	160	50	M12x1.0	3.03
	HSK100A-SFH18 TW-160	P2801513TW	18	33	42	56.3	160	50	M12x1.0	3.39
	HSK100A-SFH20 TW-160	P2801514TW	20	33	42	56.3	160	52	M16x1.0	3.36

- ▶ Inch type products are available.
- ▶ Supplied without balancing screws.
- ▶ Balancing grade G2.5 at 25,000RPM or U max. < 1gmm.

**SHRINK FIT HOLDER**

SCHRUMPFUTTER  
MANDRIN DE FRETAGE  
MADRINI PER CALLETAMENTO A CALDO  
PORTAHERRAMIENTAS DE COMPRESION POR CALOR

**HSK-E**



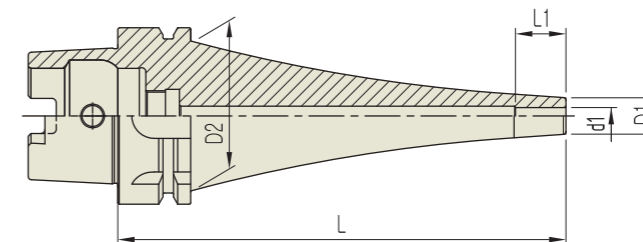
Unit : mm										
TAPER No.	MODEL No.	EDP No.	d1	D1	D2	L	L2	G	FIG.	WEIGHT (Kg)
25E	HSK25E-SFH3-45	P2771420	3	11	15	45	10	-	1	-
	HSK25E-SFH4-45	P2771421	4	11	15	45	12	-	1	-
	HSK25E-SFH5-45	P2771422	5	11	15	45	15	-	1	-
	HSK25E-SFH6-45	P2771423	6	12	17	45	18	-	2	-
	HSK25E-SFH8-45	P2771424	8	14	18	45	30	-	2	-
	HSK25E-SFH10-50	P2771425	10	16	20	50	37	-	2	-
32E	HSK32E-SFH3-60	P2771426	3	11	15	60	10	-	1	0.40
	HSK32E-SFH4-60	P2771427	4	11	15	60	12	-	1	0.50
	HSK32E-SFH5-60	P2771428	5	11	15	60	15	-	1	0.40
	HSK32E-SFH6-70	P2771429	6	12	17	70	18	-	2	0.50
	HSK32E-SFH8-70	P2771430	8	14	18	70	30	-	2	0.50
	HSK32E-SFH10-80	P2771431	10	16	20	80	37	-	2	0.60
40E	HSK40E-SFH3-60	P2771432	3	11	15	60	10	-	1	0.30
	HSK40E-SFH3-80	P2771433	3	11	15	80	10	-	1	0.40
	HSK40E-SFH4-60	P2771434	4	11	15	60	12	-	1	0.30
	HSK40E-SFH4-80	P2771435	4	11	15	80	12	-	1	0.40
	HSK40E-SFH5-60	P2771436	5	11	15	60	15	-	1	0.30
	HSK40E-SFH5-80	P2771437	5	11	15	80	15	-	1	0.40
	HSK40E-SFH6-60	P2771438	6	21	27	60	36	M5×0.8	2	0.40
	HSK40E-SFH6-80	P2771439	6	21	27	80	36	M5×0.8	2	0.50
	HSK40E-SFH8-70	P2771440	8	21	27	70	36	M6×1.0	2	0.40
	HSK40E-SFH8-90	P2771441	8	21	27	90	36	M6×1.0	2	0.50
	HSK40E-SFH10-70	P2771442	10	24	32	70	42	M8×1.0	2	0.50
	HSK40E-SFH10-90	P2771443	10	24	32	90	42	M8×1.0	2	0.60

- ▶ Inch type products are available.
- ▶ Supplied without balancing screws.
- ▶ Balancing grade G2.5 at 25,000RPM or U max. < 1gmm.

**SHRINK FIT HOLDER (CURVED)**

SCHRUMPFUTTER (GEBOGEN)  
MANDRIN DE FRETAGE (INCURVÉ)  
MADRINI PER CALLETAMENTO A CALDO (CURVO)  
PORTAHERRAMIENTAS DE COMPRESION POR CALOR (CURVADO)

**HSK-A**



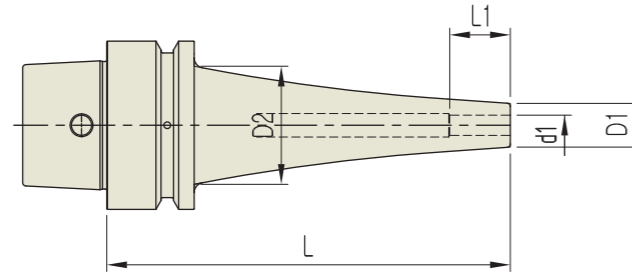
Unit : mm								
TAPER No.	MODEL No.	EDP No.	d1	D1	D2	L	L1	WEIGHT (Kg)
63A	HSK63A-SFH4CV-120	P2785100CV	4	10	53	120	12	-
	HSK63A-SFH4CV-150	P2785101CV	4	10	53	150	12	-
	HSK63A-SFH6CV-90	P2785102CV	6	13	53	90	18	-
	HSK63A-SFH6CV-120	P2785103CV	6	13	53	120	18	-
	HSK63A-SFH6CV-150	P2785104CV	6	13	53	150	18	-
	HSK63A-SFH8CV-90	P2785105CV	8	16	53	90	24	-
	HSK63A-SFH8CV-120	P2785106CV	8	16	53	120	24	-
	HSK63A-SFH8CV-150	P2785107CV	8	16	53	150	24	-
	HSK63A-SFH10CV-90	P2785108CV	10	19	53	90	30	-
	HSK63A-SFH10CV-120	P2785109CV	10	19	53	120	30	-
	HSK63A-SFH10CV-150	P2785110CV	10	19	53	150	30	-
	HSK63A-SFH12CV-90	P2785111CV	12	22	53	90	30	-
	HSK63A-SFH12CV-120	P2785112CV	12	22	53	120	30	-
	HSK63A-SFH12CV-150	P2785113CV	12	22	53	150	30	-
100A	HSK100A-SFH8CV-195	P2785114CV	8	16	85	195	24	-
	HSK100A-SFH8CV-225	P2785115CV	8	16	85	225	24	-
	HSK100A-SFH10CV-165	P2785116CV	10	19	85	165	30	-
	HSK100A-SFH10CV-195	P2785117CV	10	19	85	195	30	-
	HSK100A-SFH10CV-225	P2785118CV	10	19	85	225	30	-
	HSK100A-SFH12CV-165	P2785119CV	12	22	85	165	30	-
	HSK100A-SFH12CV-195	P2785120CV	12	22	85	195	30	-
	HSK100A-SFH12CV-225	P2785121CV	12	22	85	225	30	-

- ▶ Inch type products are available.
- ▶ Balancing grade G2.5 at 25,000RPM or U max. < 1gmm.

**SHRINK FIT HOLDER (CURVED)**

SCHRUMPFUTTER (GEBOGEN)  
 MANDRIN DE FRETAGE (INCURVÉ)  
 MADRINI PER CALLETAMENTO A CALDO (CURVO)  
 PORTAHERRAMIENTAS DE COMPRESION POR CALOR (CURVADO)

HSK-E



Unit : mm

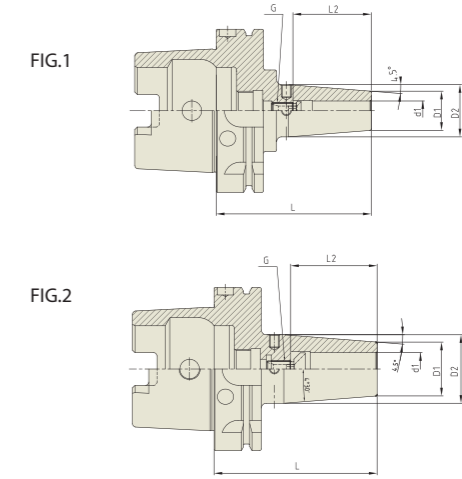
TAPER No.	MODEL No.	EDP No.	d1	D1	D2	L	L1	WEIGHT (Kg)
40E	HSK40E-SFH4CV-90	P2785122CV	4	10	34	90	12	-
	HSK40E-SFH4CV-120	P2785123CV	4	10	34	120	12	-
	HSK40E-SFH6CV-90	P2785124CV	6	13	34	90	18	-
	HSK40E-SFH6CV-120	P2785125CV	6	13	34	120	18	-
	HSK40E-SFH8CV-90	P2785126CV	8	16	34	90	24	-
	HSK40E-SFH8CV-120	P2785127CV	8	16	34	120	24	-
	HSK40E-SFH10CV-90	P2785128CV	10	19	34	90	30	-
50E	HSK40E-SFH10CV-120	P2785129CV	10	19	34	120	30	-
	HSK50E-SFH4CV-120	P2785130CV	4	10	42	120	12	-
	HSK50E-SFH4CV-150	P2785131CV	4	10	42	150	12	-
	HSK50E-SFH6CV-120	P2785132CV	6	13	42	120	18	-
	HSK50E-SFH6CV-150	P2785133CV	6	13	42	150	18	-
	HSK50E-SFH8CV-120	P2785134CV	8	16	42	120	24	-
	HSK50E-SFH8CV-150	P2785135CV	8	16	42	150	24	-
	HSK50E-SFH10CV-150	P2785136CV	10	19	42	150	30	-

- ▶ Inch type products are available.
- ▶ Balancing grade G2.5 at 25,000RPM or U max. < 1gmm.

**SHRINK FIT HOLDER (MQL1)**

SCHRUMPFUTTER  
 MANDRIN DE FRETAGE  
 MADRINI PER CALLETAMENTO A CALDO  
 PORTAHERRAMIENTAS DE COMPRESION POR CALOR

HSK-A



Unit : mm

TAPER No.	MODEL No.	EDP No.	d1	D1	D2	L	L2	G	FIG.	WEIGHT (Kg)
63A	HSK63A-SFH6-80 M1	P2860010	6	21	27	80	36	M5×0.8	2	0.83
	HSK63A-SFH6-160 M1	P2860011	6	21	27	160	36	M5×0.8	2	1.00
	HSK63A-SFH8-80 M1	P2860012	8	21	27	80	36	M6×1.0	2	0.83
	HSK63A-SFH8-160 M1	P2860013	8	21	27	160	36	M6×1.0	2	1.00
	HSK63A-SFH10-85 M1	P2860014	10	24	32	85	42	M8×1.0	2	0.83
	HSK63A-SFH10-160 M1	P2860015	10	24	32	160	42	M8×1.0	2	1.00
	HSK63A-SFH12-90 M1	P2860016	12	24	32	90	47	M10×1.0	2	0.83
	HSK63A-SFH12-160 M1	P2860017	12	24	32	160	47	M10×1.0	2	1.00
	HSK63A-SFH14-90 M1	P2860018	14	27	34	90	47	M10×1.0	2	0.91
	HSK63A-SFH14-160 M1	P2860019	14	27	34	160	47	M10×1.0	2	1.30
	HSK63A-SFH16-95 M1	P2860020	16	27	34	95	50	M10×1.0	2	0.98
	HSK63A-SFH16-160 M1	P2860021	16	27	34	160	50	M10×1.0	2	1.40
	HSK63A-SFH18-95 M1	P2860022	18	33	42	95	50	M10×1.0	2	0.98
	HSK63A-SFH18-160 M1	P2860023	18	33	42	160	50	M10×1.0	2	1.40
	HSK63A-SFH20-100 M1	P2860024	20	33	42	100	52	M10×1.0	2	1.00
	HSK63A-SFH20-160 M1	P2860025	20	33	42	160	52	M10×1.0	2	1.40
	HSK63A-SFH25-115 M1	P2860026	25	44	53	115	58	M10×1.0	2	1.40
	HSK63A-SFH25-160 M1	P2860027	25	44	53	160	58	M10×1.0	2	1.80

- ▶ Inch type products are available.
- ▶ Supplied without balancing screws.
- ▶ Balancing grade G2.5 at 25,000RPM or U max. < 1gmm.

▶ NEXT PAGE

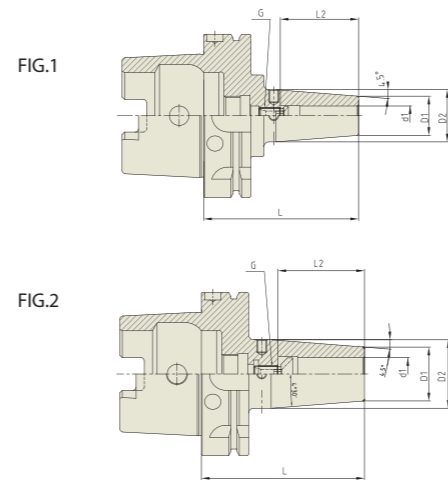
# SHRINK FIT HOLDER

SFH

## SHRINK FIT HOLDER (MQL1)

SCHRUMPFUTTER  
MANDRIN DE FRETAGE  
MADRINI PER CALLETAMENTO A CALDO  
PORTAHERRAMIENTAS DE COMPRESION POR CALOR

HSK-A



Unit : mm										
TAPER No.	MODEL No.	EDP No.	d1	D1	D2	L	L2	G	FIG.	WEIGHT (Kg)
100A	HSK100A-SFH6-85 M1	P2860028	6	21	27	85	36	M5×0.8	1	1.30
	HSK100A-SFH6-160 M1	P2860029	6	21	27	160	36	M5×0.8	1	1.80
	HSK100A-SFH8-85 M1	P2860030	8	21	27	85	36	M6×1.0	1	1.30
	HSK100A-SFH8-160 M1	P2860031	8	21	27	160	36	M6×1.0	1	1.80
	HSK100A-SFH10-90 M1	P2860032	10	24	32	90	42	M8×1.0	1	1.30
	HSK100A-SFH10-160 M1	P2860033	10	24	32	160	42	M8×1.0	1	1.80
	HSK100A-SFH12-95 M1	P2860034	12	24	32	95	47	M10×1.0	1	1.30
	HSK100A-SFH12-160 M1	P2860035	12	24	32	160	47	M10×1.0	1	1.80
	HSK100A-SFH14-95 M1	P2860036	14	27	34	95	47	M10×1.0	1	1.40
	HSK100A-SFH14-160 M1	P2860037	14	27	34	160	47	M10×1.0	1	1.90
	HSK100A-SFH16-100 M1	P2860038	16	27	34	100	50	M10×1.0	1	1.40
	HSK100A-SFH16-160 M1	P2860039	16	27	34	160	50	M10×1.0	1	1.90
	HSK100A-SFH18-100 M1	P2860040	18	33	42	100	50	M10×1.0	2	1.50
	HSK100A-SFH18-160 M1	P2860041	18	33	42	160	50	M10×1.0	2	2.00
	HSK100A-SFH20-100 M1	P2860042	20	33	42	100	52	M10×1.0	2	1.50
	HSK100A-SFH20-160 M1	P2860043	20	33	42	160	52	M10×1.0	2	2.00
	HSK100A-SFH25-115 M1	P2860044	25	44	53	115	58	M10×1.0	2	1.80
	HSK100A-SFH25-160 M1	P2860045	25	44	53	160	58	M10×1.0	2	2.30

- ▶ Inch type products are available.
- ▶ Supplied without balancing screws.
- ▶ Balancing grade G2.5 at 25,000RPM or U max. < 1gmm.

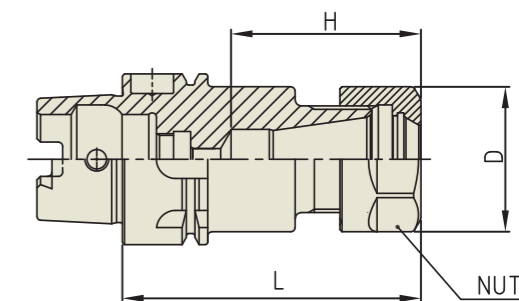
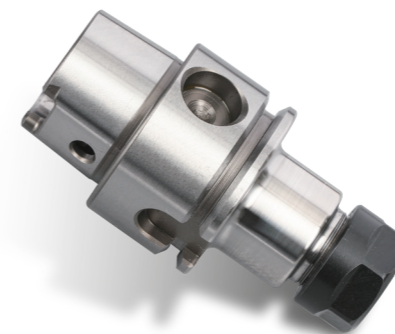
# ER COLLET CHUCK

ER

## ER COLLET CHUCK

SPANN FUTTER-ER  
MANDRIN À PINCES-ER  
MANDRINO PORTA PINZE-ER  
PORTAPINZAS-ER

HSK-A



Unit : mm								
TAPER No.	MODEL No.	EDP No.	CLAMPING RANGE	L	D	H	NUT / COLLET	WEIGHT (Kg)
32A	HSK32A-ER11-50	P2774908	0.5 - 7.0	50	19	23.6	ER11	0.18
	HSK32A-ER16-60	P2774909	0.5 - 10.0	60	28	43.0	ER16	0.21
40A	HSK40A-ER11-60	P2774910	0.5 - 7.0	60	19	28.6	ER11	0.40
	HSK40A-ER16-60	P2774911	0.5 - 10.0	60	28	36.6	ER16	0.50
	HSK40A-ER20-70	P2774912	0.5 - 13.0	70	34	44.5	ER20	0.80

- ▶ Balancing grade G2.5 at 25,000RPM or U max. < 1gmm.



Unit : mm								
TAPER No.	MODEL No.	EDP No.	CLAMPING RANGE	L	D	H	NUT / COLLET	WEIGHT (Kg)
32A	HSK32A-ER11-50	P2771908	0.5 - 7.0	50	19	28.6	ER11	0.18
	HSK32A-ER16-60	P2771909	0.5 - 10.0	60	28	36.6	ER16	0.21
40A	HSK40A-ER11-60	P2771901	0.5 - 7.0	60	19	28.6	ER11	0.40
	HSK40A-ER16-60	P2771902	0.5 - 10.0	60	28	36.6	ER16	0.50
	HSK40A-ER20-70	P2771903	0.5 - 13.0	70	34	44.5	ER20	0.80

- ▶ Inch type products are available.
- ▶ For applicable ER collet, please refer to page D296~D304.
- ▶ For applicable ER nut, Sealing disk and Spanner, please refer to page D305~D309.

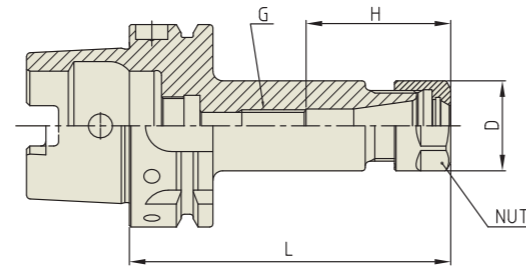
**YG ER COLLET CHUCK**

**ER**

**ER COLLET CHUCK**

SPANN FUTTER - ER  
MANDRIN À PINCES - ER  
MANDRINO PORTA PINZE - ER  
PORTAPINZAS - ER

**HSK-A**



Unit : mm

TAPER No.	MODEL No.	EDP No.	CLAMPING RANGE	L	D	G	H	NUT / COLLET	WEIGHT (Kg)
50A	HSK50A-ER16-100	P2774938	0.5 - 10.0	100	28	M10	45	ER16	0.70
	HSK50A-ER20-100	P2774939	0.5 - 13.0	100	35	M12	50	ER20	0.90
	HSK50A-ER25-100	P2774940	1.0 - 16.0	100	42	M12	50	ER25	1.20
	HSK50A-ER32-100	P2774941	1.0 - 20.0	100	50	M12	47	ER32	1.50
63A	HSK63A-ER16-100	P2774901	0.5 - 10.0	100	28	M10	45	ER16	1.20
	HSK63A-ER16-130	P2774966	0.5 - 10.0	130	28	M10	45	ER16	-
	HSK63A-ER16-160	P2771977	0.5 - 10.0	160	28	M10	45	ER16	-
	HSK63A-ER20-100	P2774942	0.5 - 13.0	100	35	M12	50	ER20	1.50
	HSK63A-ER20-130	P2774967	0.5 - 13.0	130	35	M12	50	ER20	-
	HSK63A-ER20-160	P2774968	0.5 - 13.0	160	35	M12	50	ER20	-
	HSK63A-ER25-100	P2774902	1.0 - 16.0	100	42	M12	57	ER25	1.80
	HSK63A-ER25-130	P2774969	1.0 - 16.0	130	42	M12	57	ER25	-
	HSK63A-ER25-160	P2774970	1.0 - 16.0	160	42	M12	57	ER25	-
	HSK63A-ER32-100	P2774903	1.0 - 20.0	100	50	M12	60	ER32	2.00
	HSK63A-ER32-130	P2774971	1.0 - 20.0	130	50	M12	60	ER32	-
	HSK63A-ER32-160	P2774954	1.0 - 20.0	160	50	M12	60	ER32	-
	HSK63A-ER40-120	P2774904	2.0 - 30.0	120	63	M12	69	ER40	2.30
	HSK63A-ER40-160	P2774972	2.0 - 30.0	160	63	M12	69	ER40	-

- ▶ Inch type products are available.
- ▶ Balancing grade G2.5 at 25,000RPM or U max. < 1gmm.
- ▶ For applicable ER collet, please refer to page D296~D304.
- ▶ For applicable ER nut, Sealing disk and Spanner, please refer to page D305~D309.

▶ NEXT PAGE

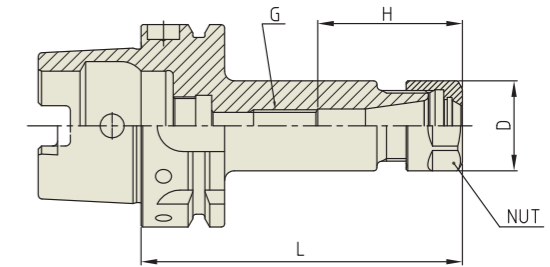
**YG ER COLLET CHUCK**

**ER**

**ER COLLET CHUCK**

SPANN FUTTER - ER  
MANDRIN À PINCES - ER  
MANDRINO PORTA PINZE - ER  
PORTAPINZAS - ER

**HSK-A**



Unit : mm

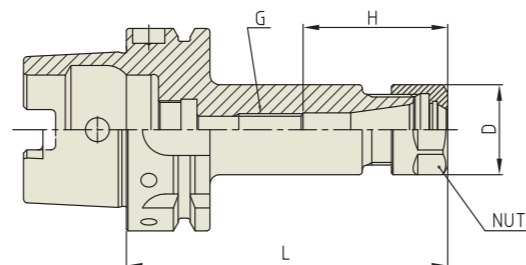
TAPER No.	MODEL No.	EDP No.	CLAMPING RANGE	L	D	G	H	NUT / COLLET	WEIGHT (Kg)
80A	HSK80A-ER16-100	P2774943	0.5 - 10.0	100	28	M10	45	ER16	1.77
	HSK80A-ER25-100	P2774944	1.0 - 16.0	100	42	M12	47	ER20	1.79
	HSK80A-ER32-100	P2774945	1.0 - 20.0	100	50	M12	53	ER25	1.95
100A	HSK100A-ER16-100	P2774905	0.5 - 10.0	100	28	M10	45	ER16	2.60
	HSK100A-ER16-130	P2774973	0.5 - 10.0	130	28	M10	45	ER16	-
	HSK100A-ER16-160	P2782001	0.5 - 10.0	160	28	M10	45	ER16	-
	HSK100A-ER20-100	P2774946	0.5 - 13.0	100	35	M12	50	ER20	2.70
	HSK100A-ER20-130	P2774974	0.5 - 13.0	130	35	M12	50	ER20	-
	HSK100A-ER20-160	P2782002	0.5 - 13.0	160	35	M12	50	ER20	-
	HSK100A-ER25-100	P2774906	1.0 - 16.0	100	42	M12	57	ER25	2.90
	HSK100A-ER25-130	P2774975	1.0 - 16.0	130	42	M12	57	ER25	-
	HSK100A-ER25-160	P2782003	1.0 - 16.0	160	42	M12	57	ER25	-
	HSK100A-ER32-100	P2774907	1.0 - 20.0	100	50	M12	65	ER32	3.10
	HSK100A-ER32-130	P2774976	1.0 - 20.0	130	50	M12	65	ER32	-
	HSK100A-ER32-160	P2774977	1.0 - 20.0	160	50	M12	65	ER32	-
	HSK100A-ER40-120	P2774947	1.0 - 20.0	120	63	M12	69	ER40	3.30
	HSK100A-ER40-160	P2774978	1.0 - 20.0	160	63	M12	69	ER40	-

- ▶ Inch type products are available.
- ▶ Balancing grade G2.5 at 25,000RPM or U max. < 1gmm.
- ▶ For applicable ER collet, please refer to page D296~D304.
- ▶ For applicable ER nut, Sealing disk and Spanner, please refer to page D305~D309.

**ER COLLET CHUCK**

SPANN FUTTER-ER  
MANDRIN À PINCES-ER  
MANDRINO PORTA PINZE-ER  
PORTAPINZAS-ER

HSK-A



Unit : mm

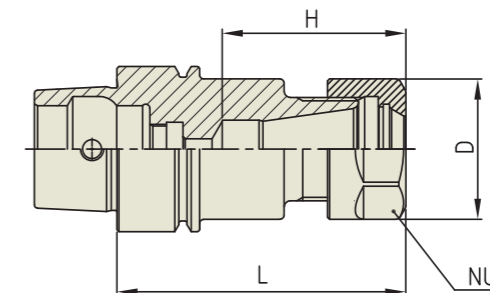
TAPER No.	MODEL No.	EDP No.	CLAMPING RANGE	L	D	G	H	NUT / COLLET	WEIGHT (Kg)
50A	HSK50A-ER16-100	P2771927	0.5 - 10.0	100	28	M10	45	ER16	0.70
	HSK50A-ER20-100	P2771928	0.5 - 13.0	100	35	M12	50	ER20	0.90
	HSK50A-ER25-100	P2771929	1.0 - 16.0	100	42	M12	50	ER25	1.20
	HSK50A-ER32-100	P2771930	1.0 - 20.0	100	50	M12	65	ER32	1.50
63A	HSK63A-ER16-100	P2564001	0.5 - 10.0	100	28	M10	45	ER16	1.20
	HSK63A-ER16-130	P2782007	0.5 - 10.0	130	28	M10	45	ER16	-
	HSK63A-ER16-160	P2771977	0.5 - 10.0	160	28	M10	45	ER16	-
	HSK63A-ER20-100	P2564005	0.5 - 13.0	100	35	M12	50	ER20	1.50
	HSK63A-ER20-130	P2782008	0.5 - 13.0	130	35	M12	50	ER20	-
	HSK63A-ER20-160	P2782009	0.5 - 13.0	160	35	M12	50	ER20	-
	HSK63A-ER25-100	P2564002	1.0 - 16.0	100	42	M12	57	ER25	1.80
	HSK63A-ER25-130	P2782010	1.0 - 16.0	130	42	M12	57	ER25	-
	HSK63A-ER25-160	P2782011	1.0 - 16.0	160	42	M12	57	ER25	-
	HSK63A-ER32-100	P2564003	1.0 - 20.0	100	50	M12	60	ER32	2.00
	HSK63A-ER32-130	P2782012	1.0 - 20.0	130	50	M12	60	ER32	-
	HSK63A-ER32-160	P2774954	1.0 - 20.0	160	50	M12	60	ER32	-
	HSK63A-ER40-120	P2564004	2.0 - 30.0	120	63	M12	75	ER40	2.30
	HSK63A-ER40-160	P2782013	2.0 - 30.0	160	63	M12	75	ER40	-
80A	HSK80A-ER16-100	P2771932	0.5 - 10.0	100	28	M10	45	ER16	1.77
	HSK80A-ER25-100	P2771933	1.0 - 16.0	100	42	M12	47	ER20	1.79
	HSK80A-ER32-100	P2771934	1.0 - 20.0	100	50	M12	53	ER25	1.95
100A	HSK100A-ER16-100	P2564011	0.5 - 10.0	100	28	M10	45	ER16	2.60
	HSK100A-ER16-130	P2782014	0.5 - 10.0	130	28	M10	45	ER16	-
	HSK100A-ER16-160	P2782001	0.5 - 10.0	160	28	M10	45	ER16	-
	HSK100A-ER20-100	P2564015	0.5 - 13.0	100	35	M12	50	ER20	2.70
	HSK100A-ER25-100	P2564012	1.0 - 16.0	100	42	M12	57	ER25	2.90
	HSK100A-ER25-130	P2782015	1.0 - 16.0	130	42	M12	57	ER25	-
	HSK100A-ER25-160	P2782003	1.0 - 16.0	160	42	M12	57	ER25	-
	HSK100A-ER32-100	P2564013	1.0 - 20.0	100	50	M12	65	ER32	3.10
	HSK100A-ER32-130	P2782016	1.0 - 20.0	130	50	M12	65	ER32	-
	HSK100A-ER32-160	P2782017	1.0 - 20.0	160	50	M12	65	ER32	-
	HSK100A-ER40-120	P2564014	2.0 - 30.0	120	63	M12	69	ER40	3.30
	HSK100A-ER40-160	P2782018	2.0 - 30.0	160	63	M12	69	ER40	-

- ▶ Inch type products are available.
- ▶ For applicable ER collet, please refer to page D296~D304.
- ▶ For applicable ER nut, Sealing disk and Spanner, please refer to page D305~D309.

**ER COLLET CHUCK**

SPANN FUTTER-ER  
MANDRIN À PINCES-ER  
MANDRINO PORTA PINZE-ER  
PORTAPINZAS-ER

HSK-E



Unit : mm

TAPER No.	MODEL No.	EDP No.	CLAMPING RANGE	L	D	H	NUT / COLLET	WEIGHT (Kg)
25E	HSK25E-ER11-40	P2774921	0.5 - 7.0	40	19	26.6	ER11	0.15
	HSK25E-ER16-50	P2774922	0.5 - 10.0	50	28	34.6	ER16	0.18
32E	HSK32E-ER11-50	P2774923	0.5 - 7.0	50	19	23.6	ER11	0.18
	HSK32E-ER16-60	P2774924	0.5 - 10.0	60	28	41.0	ER16	0.21
40E	HSK40E-ER11-60	P2774925	0.5 - 7.0	60	19	40.0	ER11	0.40
	HSK40E-ER16-60	P2774926	0.5 - 10.0	60	28	41.0	ER16	0.50
	HSK40E-ER20-70	P2774927	0.5 - 13.0	70	34	50.0	ER20	0.80

- ▶ Balancing grade G2.5 at 25,000RPM or U max. < 1gmm.



Unit : mm

TAPER No.	MODEL No.	EDP No.	CLAMPING RANGE	L	D	H	NUT / COLLET	WEIGHT (Kg)
25E	HSK25E-ER11-40	P2771935	0.5 - 7.0	40	19	26.6	ER11	0.16
	HSK25E-ER16-50	P2771936	0.5 - 10.0	50	28	34.6	ER16	0.16
32E	HSK32E-ER11-50	P2771918	0.5 - 7.0	50	19	23.6	ER11	0.18
	HSK32E-ER16-60	P2771919	0.5 - 10.0	60	28	41.0	ER16	0.21
40E	HSK40E-ER11-60	P2771920	0.5 - 7.0	60	19	40.0	ER11	0.40
	HSK40E-ER16-60	P2771921	0.5 - 10.0	60	28	41.0	ER16	0.50
	HSK40E-ER20-70	P2771922	0.5 - 13.0	70	34	50.0	ER20	0.80

- ▶ Inch type products are available.
- ▶ For applicable ER collet, please refer to page D296~D304.
- ▶ For applicable ER nut, Sealing disk and Spanner, please refer to page D305~D309.

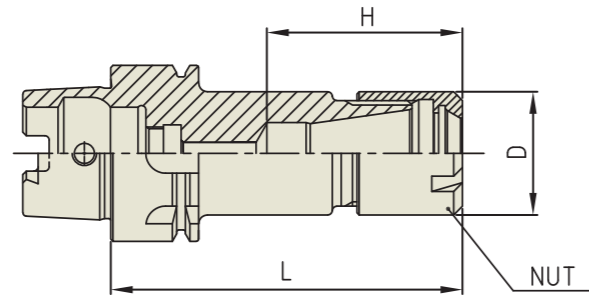
**YG ER COLLET CHUCK**

ER

**ER COLLET CHUCK (SLIM)**

SPANN FUTTER-ER  
MANDRIN À PINCES-ER  
MANDRINO PORTA PINZE-ER  
PORTAPINZAS-ER

HSK-A



Unit : mm

TAPER No.	MODEL No.	EDP No.	CLAMPING RANGE	L	D	H	NUT / COLLET	WEIGHT (Kg)
32A	HSK32A-ER8M-40	P2774913	0.5 - 5.0	40	12	21.0	ER8M / ER8	0.18
	HSK32A-ER11M-40	P2774914	0.5 - 7.0	40	16	23.0	ER11M / ER11	0.18
	HSK32A-ER16M-60	P2774915	0.5 - 10.0	60	22	38.0	ER16M / ER16	0.21
	HSK32A-ER20M-60	P2774916	0.5 - 13.0	60	28	38.0	ER20M / ER20	0.21
40A	HSK40A-ER11M-75	P2774917	0.5 - 7.0	75	16	29.5	ER11M / ER11	0.40
	HSK40A-ER16M-80	P2774918	0.5 - 10.0	80	22	38.0	ER16M / ER16	0.50
	HSK40A-ER20M-80	P2774919	0.5 - 13.0	80	28	44.5	ER20M / ER20	0.70
	HSK40A-ER25M-80	P2774920	1.0 - 16.0	80	35	52.0	ER25M / ER25	0.80

▶ Balancing grade G2.5 at 25,000RPM or U max. < 1gmm.



Unit : mm

TAPER No.	MODEL No.	EDP No.	CLAMPING RANGE	L	D	H	NUT / COLLET	WEIGHT (Kg)
32A	HSK32A-ER8M-40	P2771910	0.5 - 5.0	40	12	21.0	ER8M / ER8	0.15
	HSK32A-ER11M-40	P2771911	0.5 - 7.0	40	16	23.0	ER11M / ER11	0.15
	HSK32A-ER16M-60	P2771912	0.5 - 10.0	60	22	38.0	ER16M / ER16	0.21
	HSK32A-ER20M-60	P2771913	0.5 - 13.0	60	28	39.5	ER20M / ER20	0.20
40A	HSK40A-ER11M-75	P2771914	0.5 - 7.0	75	16	29.5	ER11M / ER11	0.40
	HSK40A-ER16M-80	P2771915	0.5 - 10.0	80	22	38.0	ER16M / ER16	0.50
	HSK40A-ER20M-80	P2771916	0.5 - 13.0	80	28	44.5	ER20M / ER20	0.70
	HSK40A-ER25M-80	P2771917	1.0 - 16.0	80	35	52.0	ER25M / ER25	0.80

▶ Inch type products are available.  
▶ For applicable ER collet, please refer to page D296~D304.  
▶ For applicable ER nut, Sealing disk and Spanner, please refer to page D307 & D309.

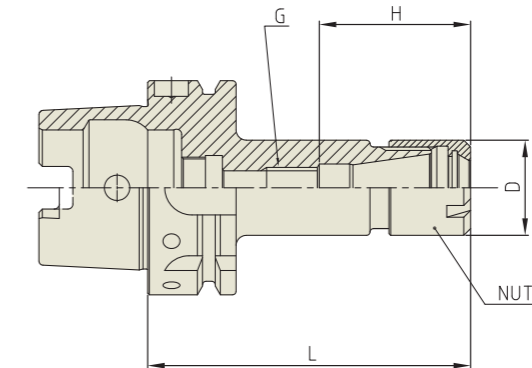
**YG ER COLLET CHUCK**

ER

**ER COLLET CHUCK (SLIM)**

SPANN FUTTER-ER  
MANDRIN À PINCES-ER  
MANDRINO PORTA PINZE-ER  
PORTAPINZAS-ER

HSK-A



Unit : mm

TAPER No.	MODEL No.	EDP No.	CLAMPING RANGE	L	D	G	H	NUT / COLLET	WEIGHT (Kg)
50A	HSK50A-ER11M-75	P2802501	0.5 ~ 7.0	75.00	16	M6	29.5	ER11M / ER11	0.30
	HSK50A-ER16M-85	P2802502	0.5 ~ 10.0	85.00	22	M10	38.0	ER16M / ER16	0.40
	HSK50A-ER20M-90	P2802503	0.5 ~ 13.0	90.00	28	M12	44.5	ER20M / ER20	0.80
	HSK50A-ER25M-105	P2802504	1.0 ~ 16.0	105.00	35	M12	52.0	ER25M / ER25	1.20
63A	HSK63A-ER11M-75	P2802505	0.5 ~ 7.0	75	16	M6	29.5	ER11M / ER11	0.80
	HSK63A-ER11M-100	P2774963	0.5 ~ 7.0	100	16	M6	29.5	ER11M / ER11	-
	HSK63A-ER11M-130	P2802758	0.5 ~ 7.0	130	16	M6	29.5	ER11M / ER11	-
	HSK63A-ER11M-160	P2802759	0.5 ~ 7.0	160	16	M6	29.5	ER11M / ER11	-
	HSK63A-ER16M-85	P2802506	0.5 ~ 10.0	85	22	M10	38.0	ER16M / ER16	1.00
	HSK63A-ER16M-100	P2802760	0.5 ~ 10.0	100	22	M10	38.0	ER16M / ER16	-
	HSK63A-ER16M-130	P2802761	0.5 ~ 10.0	130	22	M10	38.0	ER16M / ER16	-
	HSK63A-ER16M-160	P2802762	0.5 ~ 10.0	160	22	M10	38.0	ER16M / ER16	-
	HSK63A-ER20M-95	P2802507	0.5 ~ 13.0	95	28	M12	44.5	ER20M / ER20	1.20
	HSK63A-ER20M-130	P2802763	0.5 ~ 13.0	130	28	M12	44.5	ER20M / ER20	-
	HSK63A-ER20M-160	P2802764	0.5 ~ 13.0	160	28	M12	44.5	ER20M / ER20	-
	HSK63A-ER25M-105	P2802508	1.0 ~ 16.0	105	35	M12	52.0	ER25M / ER25	1.40
100A	HSK63A-ER25M-130	P2802765	1.0 ~ 16.0	130	35	M12	52.0	ER25M / ER25	-
	HSK63A-ER25M-160	P2802766	1.0 ~ 16.0	160	35	M12	52.0	ER25M / ER25	-
	HSK100A-ER11M-85	P2802509	0.5 ~ 7.0	85	16	M6	29.5	ER11M / ER11	2.40
	HSK100A-ER16M-95	P2802510	0.5 ~ 10.0	95	22	M10	38.0	ER16M / ER16	2.70
	HSK100A-ER20M-100	P2802511	0.5 ~ 13.0	100	28	M12	44.5	ER20M / ER20	3.00
	HSK100A-ER25M-120	P2802512	1.0 ~ 16.0	120	35	M12	52.0	ER25M / ER25	3.20

▶ Inch type products are available.  
▶ Balancing grade G2.5 at 25,000RPM or U max. < 1gmm.  
▶ For applicable ER collet, please refer to page D296~D304.  
▶ For applicable ER nut, Sealing disk and Spanner, please refer to page D307 & D309.



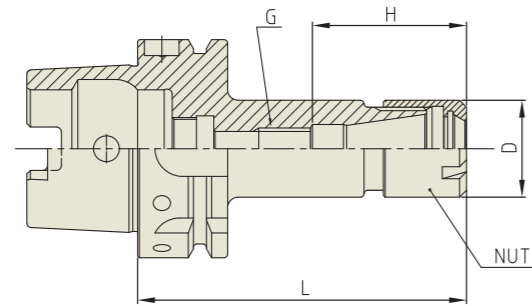
**YG ER COLLET CHUCK**

ER

**ER COLLET CHUCK (SLIM)**

SPANN FUTTER - ER  
MANDRIN À PINCES - ER  
MANDRINO PORTA PINZE - ER  
PORTAPINZAS - ER

HSK-A



Unit : mm

TAPER No.	MODEL No.	EDP No.	CLAMPING RANGE	L	D	G	H	NUT / COLLET	WEIGHT (Kg)
50A	HSK50A-ER11M-75	P2802501	0.5 - 7.0	75	16	M6	29.5	ER11M / ER11	0.30
	HSK50A-ER16M-85	P2802502	0.5 - 10.0	85	22	M10	38.0	ER16M / ER16	0.40
	HSK50A-ER20M-90	P2802503	0.5 - 13.0	90	28	M12	44.5	ER20M / ER20	0.80
	HSK50A-ER25M-105	P2802504	1.0 - 16.0	105	35	M12	52.0	ER25M / ER25	1.20
63A	HSK63A-ER11M-75	P2802505	0.5 - 7.0	75	16	M6	29.5	ER11M / ER11	0.80
	HSK63A-ER11M-100	P2774963	0.5 - 7.0	100	16	M6	29.5	ER11M / ER11	-
	HSK63A-ER11M-130	P2802767	0.5 - 7.0	130	16	M6	29.5	ER11M / ER11	-
	HSK63A-ER11M-160	P2802768	0.5 - 7.0	160	16	M6	29.5	ER11M / ER11	-
	HSK63A-ER16M-85	P2802506	0.5 - 10.0	85	22	M10	38.0	ER16M / ER16	1.00
	HSK63A-ER16M-100	P2802769	0.5 - 10.0	100	22	M10	38.0	ER16M / ER16	-
	HSK63A-ER16M-130	P2802770	0.5 - 10.0	130	22	M10	38.0	ER16M / ER16	-
	HSK63A-ER16M-160	P2802771	0.5 - 10.0	160	22	M10	38.0	ER16M / ER16	-
	HSK63A-ER20M-95	P2802507	0.5 - 13.0	95	28	M12	44.5	ER20M / ER20	1.20
	HSK63A-ER20M-130	P2802772	0.5 - 13.0	130	28	M12	44.5	ER20M / ER20	-
	HSK63A-ER20M-160	P2802773	0.5 - 13.0	160	28	M12	44.5	ER20M / ER20	-
	HSK63A-ER25M-105	P2802508	1.0 - 16.0	105	35	M12	52.0	ER25M / ER25	1.40
100A	HSK63A-ER25M-130	P2802774	1.0 - 16.0	130	35	M12	52.0	ER25M / ER25	-
	HSK63A-ER25M-160	P2802775	1.0 - 16.0	160	35	M12	52.0	ER25M / ER25	-
	HSK100A-ER11M-85	P2802509	0.5 - 7.0	85	16	M6	29.5	ER11M / ER11	2.40
	HSK100A-ER16M-95	P2802510	0.5 - 10.0	95	22	M10	38.0	ER16M / ER16	2.70
	HSK100A-ER20M-100	P2802511	0.5 - 13.0	100	28	M12	44.5	ER20M / ER20	3.00
	HSK100A-ER25M-120	P2802512	1.0 - 16.0	120	35	M12	52.0	ER25M / ER25	3.20

- ▶ Inch type products are available.
- ▶ For applicable ER collet, please refer to page D296~D304.
- ▶ For applicable ER nut, Sealing disk and Spanner, please refer to page D307 & D309.

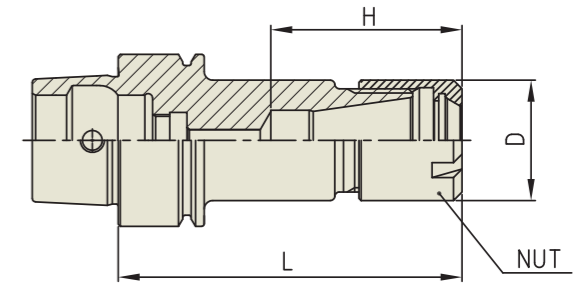
**YG ER COLLET CHUCK**

ER

**ER COLLET CHUCK (SLIM)**

SPANN FUTTER - ER  
MANDRIN À PINCES - ER  
MANDRINO PORTA PINZE - ER  
PORTAPINZAS - ER

HSK-E



Unit : mm

TAPER No.	MODEL No.	EDP No.	CLAMPING RANGE	L	D	H	NUT / COLLET	WEIGHT (Kg)
25E	HSK25E-ER8M-35	P2774928	0.5 - 5.0	35	12	21.0	ER8M / ER8	0.15
	HSK25E-ER11M-40	P2774929	0.5 - 7.0	40	16	24.5	ER11M / ER11	0.18
32E	HSK32E-ER8M-40	P2774930	0.5 - 5.0	40	12	21.0	ER8M / ER8	0.15
	HSK32E-ER11M-40	P2774931	0.5 - 7.0	40	16	23.0	ER11M / ER11	0.18
	HSK32E-ER16M-60	P2774932	0.5 - 10.0	60	22	38.0	ER16M / ER16	0.21
40E	HSK32E-ER20M-60	P2774933	0.5 - 13.0	60	28	39.5	ER20M / ER20	0.21
	HSK40E-ER11M-75	P2774934	0.5 - 7.0	75	16	29.5	ER11M / ER11	0.40
	HSK40E-ER16M-80	P2774935	0.5 - 10.0	80	22	38.0	ER16M / ER16	0.50
	HSK40E-ER20M-80	P2774936	0.5 - 13.0	80	28	44.5	ER20M / ER20	0.70
	HSK40E-ER25M-80	P2774937	1.0 - 16.0	80	35	52.0	ER25M / ER25	0.80

▶ Balancing grade G2.5 at 25,000RPM or U max. < 1gmm.



Unit : mm

TAPER No.	MODEL No.	EDP No.	CLAMPING RANGE	L	D	H	NUT / COLLET	WEIGHT (Kg)
25E	HSK25E-ER8M-35	P2771937	0.5 - 5.0	35	12	21.0	ER8M / ER8	0.10
	HSK25E-ER11M-40	P2771938	0.5 - 7.0	40	16	24.5	ER11M / ER11	0.10
32E	HSK32E-ER8M-40	P2774948	0.5 - 5.0	40	12	21.0	ER8M / ER8	0.15
	HSK32E-ER11M-40	P2774949	0.5 - 7.0	40	16	23.0	ER11M / ER11	0.15
	HSK32E-ER16M-60	P2774950	0.5 - 10.0	60	22	38.0	ER16M / ER16	0.21
40E	HSK32E-ER20M-60	P2774951	0.5 - 13.0	60	28	39.5	ER20M / ER20	0.20
	HSK40E-ER11M-75	P2771904	0.5 - 7.0	75	16	29.5	ER11M / ER11	0.40
	HSK40E-ER16M-80	P2771905	0.5 - 10.0	80	22	38.0	ER16M / ER16	0.50
	HSK40E-ER20M-80	P2771906	0.5 - 13.0	80	28	44.5	ER20M / ER20	0.70
	HSK40E-ER25M-80	P2771907	1.0 - 16.0	80	35	52.0	ER25M / ER25	0.80

- ▶ Inch type products are available.
- ▶ For applicable ER collet, please refer to page D296~D304.
- ▶ For applicable ER nut, Sealing disk and Spanner, please refer to page D307 & D309.

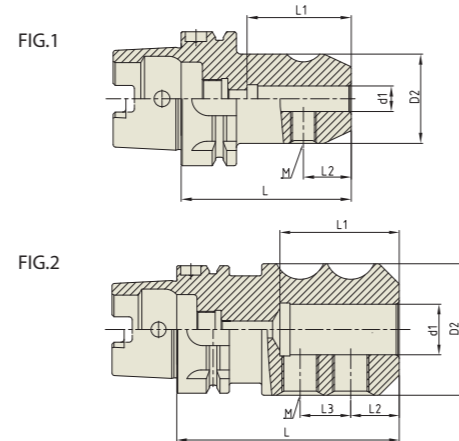


EMH

### END MILL HOLDER

FRÄSERFUTTER UND FLÄCHENSPANNFUTTER  
MANDRIN PORTE FRAISE À QUEUE CYLINDRIQUE, À MÉPLAT  
MANDRINI PORTA FRESA TIPO WELDON  
PORTAFRESAS Y EJES DE SUJECCION LATERAL

HSK-A



Unit : mm											
TAPER No.	MODEL No.	EDP No.	d1	D2	L	L1	L2	L3	M	FIG.	WEIGHT (Kg)
40A	HSK40A-EMH6-60	P2775522	6	25	60	38	18	-	M6	1	0.30
	HSK40A-EMH8-60	P2775523	8	28	60	38	18	-	M8	1	0.30
	HSK40A-EMH10-60	P2775524	10	35	60	42	20	-	M10	1	0.30
	HSK40A-EMH12-70	P2775525	12	42	70	47	22.5	-	M12	1	0.40
	HSK40A-EMH14-70	P2775526	14	44	70	47	22.5	-	M12	1	0.40
	HSK40A-EMH16-80	P2775527	16	48	80	50	24	-	M14	1	0.60
50A	HSK50A-EMH6-65	P2775528	6	25	65	38	18	-	M6	1	0.70
	HSK50A-EMH8-65	P2775529	8	28	65	38	18	-	M8	1	0.80
	HSK50A-EMH10-65	P2775530	10	35	65	42	20	-	M10	1	0.80
	HSK50A-EMH12-80	P2775531	12	42	80	47	22.5	-	M12	1	1.20
	HSK50A-EMH14-80	P2775532	14	44	80	47	22.5	-	M12	1	1.30
	HSK50A-EMH16-80	P2775533	16	48	80	50	24	-	M14	1	1.30
63A	HSK50A-EMH18-80	P2775534	18	50	80	50	24	-	M14	1	1.40
	HSK50A-EMH20-80	P2775535	20	52	80	52	25	-	M16	1	1.50
	HSK63A-EMH6-65	P2775501	6	25	65	35	18	-	M6	1	0.80
	HSK63A-EMH8-65	P2775502	8	28	65	38	18	-	M8	1	0.80
	HSK63A-EMH10-65	P2775503	10	35	65	42	20	-	M10	1	0.90
	HSK63A-EMH12-80	P2775504	12	42	80	47	22.5	-	M12	1	1.10
100A	HSK63A-EMH14-80	P2775505	14	44	80	47	22.5	-	M12	1	1.20
	HSK63A-EMH16-80	P2775506	16	48	80	50	24	-	M14	1	1.30
	HSK63A-EMH18-80	P2775507	18	50	80	50	24	-	M14	1	1.40
	HSK63A-EMH20-80	P2775508	20	52	80	52	25	-	M16	1	1.50
	HSK63A-EMH25-110	P2775509	25	65	110	60	24	25	M18	2	2.30
	HSK63A-EMH32-110	P2775510	32	72	110	64	24	28	M20	2	2.60
100A	HSK100A-EMH6-80	P2775511	6	25	80	35	18	-	M6	1	0.80
	HSK100A-EMH8-80	P2775512	8	28	80	35	18	-	M8	1	0.80
	HSK100A-EMH10-80	P2775513	10	35	80	39	20	-	M10	1	0.90
	HSK100A-EMH12-80	P2775514	12	42	80	47	22.5	-	M12	1	1.10
	HSK100A-EMH14-80	P2775515	14	44	80	47	22.5	-	M12	1	1.20
	HSK100A-EMH16-100	P2775516	16	48	100	50	24	-	M14	1	1.30
	HSK100A-EMH18-100	P2775517	18	50	100	50	24	-	M14	1	1.40
	HSK100A-EMH20-100	P2775518	20	52	100	52	25	-	M16	1	1.50
	HSK100A-EMH25-100	P2775519	25	65	100	60	24	25	M18	2	2.30
	HSK100A-EMH32-100	P2775520	32	72	100	64	24	28	M20	2	2.60
HSK100A-EMH40-120	P2775521	40	80	120	74	30	32	M20	2	2.60	

- ▶ Inch type products are available.
- ▶ Standard End Mill Holder is for a cutting tool with weldon shank and End Mill Holder for a cutting tool with Whistle notch is available upon request.
- ▶ Combi-style Holder with ball jointed clamping screw which can be used with cutting tools with Weldon and Whistle notch shank is available.
- ▶ Balancing grade G2.5 at 25,000RPM or U max. < 1gmm.

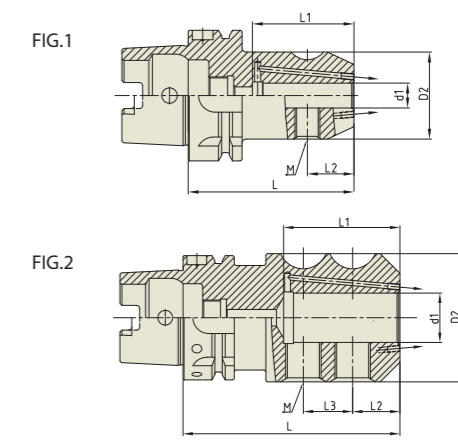


EMH

### END MILL HOLDER (COOLANT CHANNEL)

FRÄSERFUTTER UND FLÄCHENSPANNFUTTER  
MANDRIN PORTE FRAISE À QUEUE CYLINDRIQUE, À MÉPLAT  
MANDRINI PORTA FRESA TIPO WELDON  
PORTAFRESAS Y EJES DE SUJECCION LATERAL

HSK-A



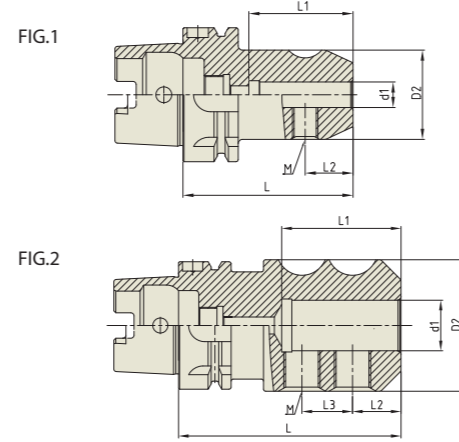
Unit : mm											
TAPER No.	MODEL No.	EDP No.	d1	D2	L	L1	L2	L3	M	FIG.	WEIGHT (Kg)
40A	HSK40A-EMH6C-60	P2563061	6	25	60	38	18	-	M6	1	0.30
	HSK40A-EMH8C-60	P2563062	8	28	60	38	18	-	M8	1	0.30
	HSK40A-EMH10C-60	P2563063	10	35	60	42	20	-	M10	1	0.30
	HSK40A-EMH12C-70	P2563064	12	42	70	47	22.5	-	M12	1	0.40
	HSK40A-EMH14C-70	P2563065	14	44	70	47	22.5	-	M12	1	0.40
	HSK40A-EMH16C-80	P2563066	16	48	80	50	24	-	M14	1	0.60
50A	HSK50A-EMH6C-65	P2563067	6	25	65	38	18	-	M6	1	0.70
	HSK50A-EMH8C-65	P2563068	8	28	65	38	18	-	M8	1	0.80
	HSK50A-EMH10C-65	P2563069	10	35	65	42	20	-	M10	1	0.80
	HSK50A-EMH12C-80	P2563070	12	42	80	47	22.5	-	M12	1	1.20
	HSK50A-EMH14C-80	P2563071	14	44	80	47	22.5	-	M12	1	1.30
	HSK50A-EMH16C-80	P2563072	16	48	80	50	24	-	M14	1	1.30
63A	HSK50A-EMH18C-80	P2563073	18	50	80	50	24	-	M14	1	1.40
	HSK50A-EMH20C-80	P2563074	20	52	80	52	25	-	M16	1	1.50
	HSK63A-EMH6C-65	P2563021	6	25	65	35	18	-	M6	1	0.80
	HSK63A-EMH8C-65	P2563022	8	28	65	40	18	-	M8	1	0.80
	HSK63A-EMH10C-65	P2563023	10	35	65	40.5	20	-	M10	1	0.90
	HSK63A-EMH12C-80	P2563024	12	42	80	49	22.5	-	M12	1	1.10
100A	HSK63A-EMH14C-80	P2563025	14	44	80	49	22.5	-	M12	1	1.20
	HSK63A-EMH16C-80	P2563026	16	48	80	52	24	-	M14	1	1.30
	HSK63A-EMH18C-80	P2563027	18	50	80	52	24	-	M14	1	1.40
	HSK63A-EMH20C-80	P2563028	20	52	80	53	25	-	M16	1	1.50
	HSK63A-EMH25C-110	P2563029	25	65	110	59	24	25	M18	2	2.30
	HSK63A-EMH32C-110	P2563030	32	72	110	63	24	28	M20	2	2.60
100A	HSK100A-EMH6C-80	P2563059	6	25	80	35	18	-	M6	1	0.80
	HSK100A-EMH8C-80	P2563060	8	28	80	35	18	-	M8	1	0.80
	HSK100A-EMH10C-80	P2563052	10	35	80	35.5	20	-	M10	1	0.90
	HSK100A-EMH12C-80	P2563053	12	42	80	49	22.5	-	M12	1	1.10
	HSK100A-EMH14C-80	P2563054	14	44	80	49	22.5	-	M12	1	1.20
	HSK100A-EMH16C-100	P2563055	16	48	100	52	24	-	M14	1	1.30
	HSK100A-EMH18C-100	P2563056	18	50	100	52	24	-	M14	1	1.40
	HSK100A-EMH20C-100	P2563057	20	52	100	53	25	-	M16	1	1.50
	HSK100A-EMH25C-100	P2563058	25	65	100	59	24	25	M18	2	2.30
	HSK100A-EMH32C-100	P2772801	32	72	100	63	24	28	M20	2	2.60
HSK100A-EMH40C-120	P2772802	40	80	120	73	30	32	M20	2	2.60	

- ▶ Inch type products are available.
- ▶ Standard End Mill Holder is for a cutting tool with weldon shank and End Mill Holder for a cutting tool with Whistle notch is available upon request.
- ▶ Combi-style Holder with ball jointed clamping screw which can be used with cutting tools with Weldon and Whistle notch shank is available.
- ▶ Balancing grade G2.5 at 25,000RPM or U max. < 1gmm.

**END MILL HOLDER**

FRÄSERFUTTER UND FLÄCHENSPANNFUTTER  
 MANDRIN PORTE FRAISE À QUEUE CYLINDRIQUE, À MÉPLAT  
 MANDRINI PORTA FRESA TIPO WELDON  
 PORTAFRESAS Y EJES DE SUJECCION LATERAL

HSK-A



Unit : mm

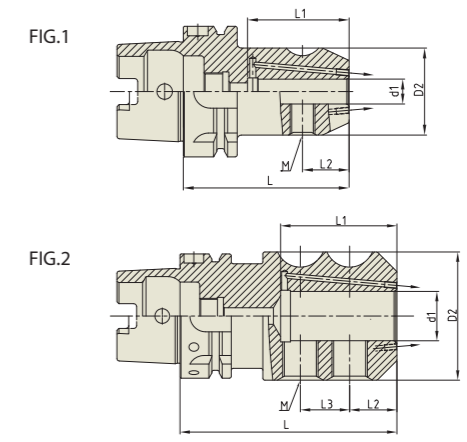
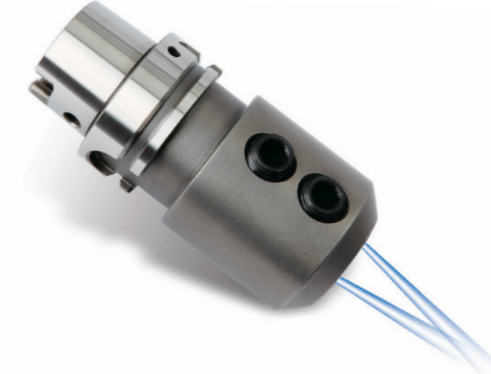
TAPER No.	MODEL No.	EDP No.	d1	D2	L	L1	L2	L3	M	FIG.	WEIGHT (Kg)
40A	HSK40A-EMH6-60	P2775522	6	25	60	38	18	-	M6	1	0.30
	HSK40A-EMH8-60	P2775523	8	28	60	38	18	-	M8	1	0.30
	HSK40A-EMH10-60	P2775524	10	35	60	42	20	-	M10	1	0.30
	HSK40A-EMH12-70	P2775525	12	42	70	47	22.5	-	M12	1	0.40
	HSK40A-EMH14-70	P2775526	14	44	70	47	22.5	-	M12	1	0.40
	HSK40A-EMH16-80	P2775527	16	48	80	50	24	-	M14	1	0.60
50A	HSK50A-EMH6-65	P2775528	6	25	65	38	18	-	M6	1	0.70
	HSK50A-EMH8-65	P2775529	8	28	65	38	18	-	M8	1	0.80
	HSK50A-EMH10-65	P2775530	10	35	65	42	20	-	M10	1	0.80
	HSK50A-EMH12-80	P2775531	12	42	80	47	22.5	-	M12	1	1.20
	HSK50A-EMH14-80	P2775532	14	44	80	47	22.5	-	M12	1	1.30
	HSK50A-EMH16-80	P2775533	16	48	80	50	24	-	M14	1	1.30
	HSK50A-EMH18-80	P2775534	18	50	80	50	24	-	M14	1	1.40
	HSK50A-EMH20-80	P2775535	20	52	80	52	25	-	M16	1	1.50
63A	HSK63A-EMH6-65	P2775501	6	25	65	35	18	-	M6	1	0.80
	HSK63A-EMH8-65	P2775502	8	28	65	38	18	-	M8	1	0.80
	HSK63A-EMH10-65	P2775503	10	35	65	42	20	-	M10	1	0.90
	HSK63A-EMH12-80	P2775504	12	42	80	47	22.5	-	M12	1	1.10
	HSK63A-EMH14-80	P2775505	14	44	80	47	22.5	-	M12	1	1.20
	HSK63A-EMH16-80	P2775506	16	48	80	50	24	-	M14	1	1.30
	HSK63A-EMH18-80	P2775507	18	50	80	50	24	-	M14	1	1.40
	HSK63A-EMH20-80	P2775508	20	52	80	52	25	-	M16	1	1.50
	HSK63A-EMH25-110	P2775509	25	65	110	60	24	25	M18	2	2.30
	HSK63A-EMH32-110	P2775510	32	72	110	64	24	28	M20	2	2.60
100A	HSK100A-EMH6-80	P2775511	6	25	80	35	18	-	M6	1	0.80
	HSK100A-EMH8-80	P2775512	8	28	80	35	18	-	M8	1	0.80
	HSK100A-EMH10-80	P2775513	10	35	80	39	20	-	M10	1	0.90
	HSK100A-EMH12-80	P2775514	12	42	80	47	22.5	-	M12	1	1.10
	HSK100A-EMH14-80	P2775515	14	44	80	47	22.5	-	M12	1	1.20
	HSK100A-EMH16-100	P2775516	16	48	100	50	24	-	M14	1	1.30
	HSK100A-EMH18-100	P2775517	18	50	100	50	24	-	M14	1	1.40
	HSK100A-EMH20-100	P2775518	20	52	100	52	25	-	M16	1	1.50
	HSK100A-EMH25-100	P2775519	25	65	100	60	24	25	M18	2	2.30
	HSK100A-EMH32-100	P2775520	32	72	100	64	24	28	M20	2	2.60
	HSK100A-EMH40-120	P2775521	40	80	120	74	30	32	M20	2	2.60

► Inch type products are available.  
 ► Standard End Mill Holder is for a cutting tool with weldon shank and End Mill Holder for a cutting tool with Whistle notch is available upon request.  
 ► Combi-style Holder with ball jointed clamping screw which can be used with cutting tools with Weldon and Whistle notch shank is available.

**END MILL HOLDER (COOLANT CHANNEL)**

FRÄSERFUTTER UND FLÄCHENSPANNFUTTER  
 MANDRIN PORTE FRAISE À QUEUE CYLINDRIQUE, À MÉPLAT  
 MANDRINI PORTA FRESA TIPO WELDON  
 PORTAFRESAS Y EJES DE SUJECCION LATERAL

HSK-A



Unit : mm

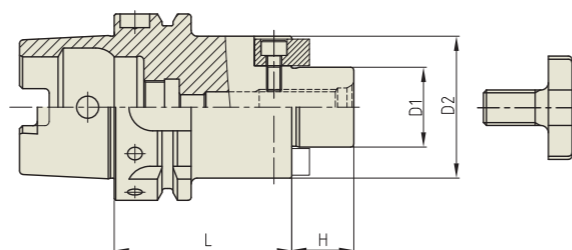
TAPER No.	MODEL No.	EDP No.	d1	D2	L	L1	L2	L3	M	FIG.	WEIGHT (Kg)	
40A	HSK40A-EMH6C-60	P2777222	6	25	60	38	18	-	M6	1	0.30	
	HSK40A-EMH8C-60	P2777223	8	28	60	38	18	-	M8	1	0.30	
	HSK40A-EMH10C-60	P2777224	10	35	60	42	20	-	M10	1	0.30	
	HSK40A-EMH12C-70	P2777225	12	42	70	47	22.5	-	M12	1	0.40	
	HSK40A-EMH14C-70	P2777226	14	44	70	47	22.5	-	M12	1	0.40	
	HSK40A-EMH16C-80	P2777227	16	48	80	50	24	-	M14	1	0.60	
50A	HSK50A-EMH6C-65	P2777228	6	25	65	38	18	-	M6	1	0.70	
	HSK50A-EMH8C-65	P2777229	8	28	65	38	18	-	M8	1	0.80	
	HSK50A-EMH10C-65	P2777230	10	35	65	42	20	-	M10	1	0.80	
	HSK50A-EMH12C-80	P2777231	12	42	80	47	22.5	-	M12	1	1.20	
	HSK50A-EMH14C-80	P2777232	14	44	80	47	22.5	-	M12	1	1.30	
	HSK50A-EMH16C-80	P2777233	16	48	80	50	24	-	M14	1	1.30	
	HSK50A-EMH18C-80	P2777234	18	50	80	50	24	-	M14	1	1.40	
	HSK50A-EMH20C-80	P2777235	20	52	80	52	25	-	M16	1	1.50	
	63A	HSK63A-EMH6C-65	P2777201	6	25	65	35	18	-	M6	1	0.80
		HSK63A-EMH8C-65	P2777202	8	28	65	38	18	-	M8	1	0.80
HSK63A-EMH10C-65		P2777203	10	35	65	42	20	-	M10	1	0.90	
HSK63A-EMH12C-80		P2777204	12	42	80	47	22.5	-	M12	1	1.10	
HSK63A-EMH14C-80		P2777206	14	44	80	47	22.5	-	M12	1	1.20	
HSK63A-EMH16C-80		P2777205	16	48	80	50	24	-	M14	1	1.30	
HSK63A-EMH18C-80		P2777207	18	50	80	50	24	-	M14	1	1.40	
HSK63A-EMH20C-80		P2777208	20	52	80	52	25	-	M16	1	1.50	
HSK63A-EMH25C-110		P2777209	25	65	110	60	24	25	M18	2	2.30	
HSK63A-EMH32C-110		P2777210	32	72	110	64	24	28	M20	2	2.60	
100A	HSK100A-EMH6C-80	P2777211	6	25	80	35	18	-	M6	1	0.80	
	HSK100A-EMH8C-80	P2777212	8	28	80	35	18	-	M8	1	0.80	
	HSK100A-EMH10C-80	P2777213	10	35	80	35.5	20	-	M10	1	0.90	
	HSK100A-EMH12C-80	P2777214	12	42	80	49	22.5	-	M12	1	1.10	
	HSK100A-EMH14C-80	P2777215	14	44	80	49	22.5	-	M12	1	1.20	
	HSK100A-EMH16C-100	P2777216	16	48	100	52	24	-	M14	1	1.30	
	HSK100A-EMH18C-100	P2777217	18	50	100	52	24	-	M14	1	1.40	
	HSK100A-EMH20C-100	P2777218	20	52	100	53	25	-	M16	1	1.50	
	HSK100A-EMH25C-100	P2777219	25	65	100	59	24	25	M18	2	2.30	
	HSK100A-EMH32C-100	P2777220	32	72	100	63	24	28	M20	2	2.60	
	HSK100A-EMH40C-120	P2777221	40	80	120	73	30	32	M20	2	2.60	

► Inch type products are available.  
 ► Standard End Mill Holder is for a cutting tool with weldon shank and End Mill Holder for a cutting tool with Whistle notch is available upon request.  
 ► Combi-style Holder with ball jointed clamping screw which can be used with cutting tools with Weldon and Whistle notch shank is available.

**SHELL MILL ARBOR**

AUFNAHMEDORN FÜR FRÄSER MIT BOHRUNG  
MANDRIN PORTE-FRAISES  
MANDRINO CON TRASCINAMENTO FISSO  
PORTA FRESAS

**HSK-A**



Unit : mm

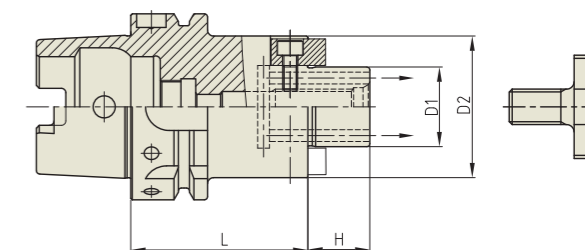
TAPER No.	MODEL No.	EDP No.	D1	D2	L	H	BOLT	WEIGHT (Kg)
40A	HSK40A-SMA16-50	P2778201	16	32	50	17	M8x16L	0.40
	HSK40A-SMA22-50	P2778202	22	40	50	19	M10x18L	0.50
	HSK40A-SMA27-60	P2778203	27	48	60	21	M12x22L	0.60
50A	HSK50A-SMA16-50	P2778204	16	32	50	17	M8x16L	0.50
	HSK50A-SMA22-60	P2778205	22	40	60	19	M10x18L	0.57
	HSK50A-SMA27-60	P2778206	27	48	60	21	M12x22L	0.75
63A	HSK50A-SMA32-60	P2778207	32	58	60	24	M16x26L	0.90
	HSK63A-SMA16-50	P2566001	16	32	50	17	M8x16L	0.81
	HSK63A-SMA22-50	P2566002	22	40	50	19	M10x18L	0.93
	HSK63A-SMA27-60	P2566003	27	48	60	21	M12x22L	1.22
100A	HSK63A-SMA32-60	P2566004	32	58	60	24	M16x26L	1.46
	HSK63A-SMA40-60	P2566005	40	70	60	27	M20x30L	1.80
	HSK100A-SMA16-50	P2566011	16	32	50	17	M8x16L	2.14
	HSK100A-SMA22-50	P2566012	22	40	50	19	M10x18L	2.25
100A	HSK100A-SMA27-50	P2566013	27	48	50	21	M12x22L	2.40
	HSK100A-SMA32-50	P2566014	32	58	50	24	M16x26L	2.60
	HSK100A-SMA40-60	P2566015	40	70	60	27	M20x30L	3.25
	HSK100A-SMA50-70	P2778209	50	90	70	30	M24x36L	5.40

- ▶ Inch type products are available.
- ▶ For parts, please refer to page D311.

**SHELL MILL ARBOR (COOLANT CHANNEL & SMALL FACE)**

AUFNAHMEDORN FÜR FRÄSER MIT BOHRUNG  
MANDRIN PORTE-FRAISES  
MANDRINO CON TRASCINAMENTO FISSO  
PORTA FRESAS

**HSK-A**



Unit : mm

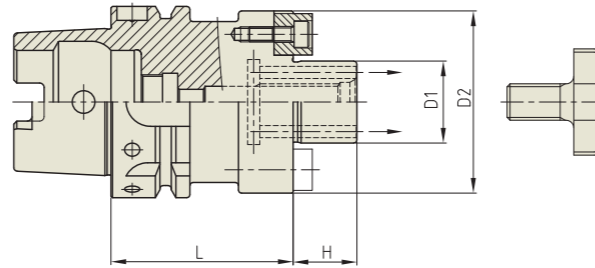
TAPER No.	MODEL No.	EDP No.	D1	D2	L	H	BOLT	WEIGHT (Kg)	
63A	HSK63A-SMA16C-50	P2566001C	16	32	50	17	M8x16L	0.80	
	HSK63A-SMA22C-50	P2566002C	22	40	50	19	M10x18L	0.92	
	HSK63A-SMA22C-100	P2801101C	22	40	100	19	M10x18L	1.40	
	HSK63A-SMA22C-160	P2803202C	22	40	160	19	M10x18L	1.97	
	HSK63A-SMA27C-60	P2566003C	27	48	60	21	M12x22L	1.19	
	HSK63A-SMA27C-100	P2801102C	27	48	100	21	M12x22L	1.74	
	HSK63A-SMA27C-160	P2803204C	27	48	160	21	M12x22L	2.55	
	HSK63A-SMA32C-60	P2566004C	32	58	60	24	M16x26L	1.50	
	HSK63A-SMA32C-100	P2801103C	32	58	100	24	M16x26L	2.72	
	HSK63A-SMA40C-60	P2566005C	40	70	60	27	M20x30L	1.66	
	100A	HSK100A-SMA16C-50	P2566011C	16	32	50	17	M8x16L	2.25
		HSK100A-SMA22C-50	P2566012C	22	40	50	19	M10x18L	2.25
HSK100A-SMA22C-100		P2801105C	22	40	100	19	M10x18L	2.72	
HSK100A-SMA22C-160		P2803206C	22	40	160	19	M10x18L	3.28	
HSK100A-SMA27C-50		P2566013C	27	48	50	21	M12x22L	2.40	
HSK100A-SMA27C-100		P2801106C	27	48	100	21	M12x22L	3.12	
HSK100A-SMA27C-160		P2803207C	27	48	160	21	M12x22L	4.01	
HSK100A-SMA32C-50		P2566014C	32	58	50	24	M16x26L	2.55	
HSK100A-SMA32C-100		P2801107C	32	58	100	24	M16x26L	3.49	
HSK100A-SMA32C-160		P2803208C	32	58	160	24	M16x26L	4.66	
HSK100A-SMA40C-60		P2566015C	40	70	60	27	M20x30L	3.10	
HSK100A-SMA40C-100		P2801108C	40	70	100	27	M20x30L	4.19	
HSK100A-SMA40C-160	P2803209C	40	70	160	27	M20x30L	5.88		

- ▶ Inch type products are available.
- ▶ With "Coolant Through" by coolant channels.
- ▶ For parts, please refer to page D311.

**SHELL MILL ARBOR (COOLANT CHANNEL & LARGE FACE)**

AUFNAHMEDORN FÜR FRÄSER MIT BOHRUNG  
MANDRIN PORTE-FRAISES  
MANDRINO CON TRASCINAMENTO FISSO  
PORTA FRESAS

**HSK-A**



Unit : mm

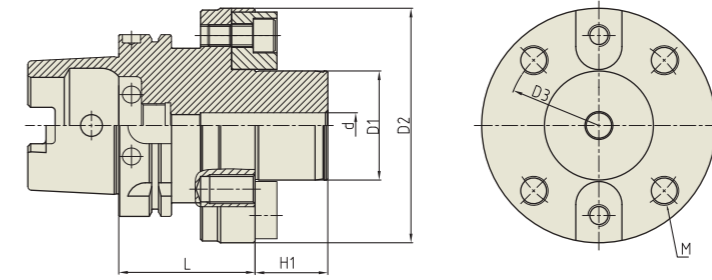
TAPER No.	MODEL No.	EDP No.	D1	D2	L	H	BOLT	WEIGHT (Kg)
63A	HSK63A-SMA16CE-50	P2803301CE	16	38	50	17	M8x16L	0.86
	HSK63A-SMA16CE-100	P2803302CE	16	38	100	17	M8x16L	1.29
	HSK63A-SMA16CE-145	P2803303CE	16	38	145	17	M8x16L	1.68
	HSK63A-SMA22CE-50	P2803304CE	22	48	50	19	M10x18L	1.02
	HSK63A-SMA22CE-100	P2803305CE	22	48	100	19	M10x18L	1.71
	HSK63A-SMA22CE-160	P2803306CE	22	48	160	19	M10x18L	2.54
	HSK63A-SMA27CE-60	P2803307CE	27	60	60	21	M12x22L	1.39
	HSK63A-SMA27CE-100	P2803308CE	27	60	100	21	M12x22L	2.25
	HSK63A-SMA27CE-160	P2803309CE	27	60	160	21	M12x22L	3.54
	HSK63A-SMA32CE-60	P2803310CE	32	78	60	24	M16x26L	1.70
	HSK63A-SMA32CE-100	P2803311CE	32	78	100	24	M16x26L	3.40
HSK63A-SMA40CE-60	P2803312CE	40	89	60	27	M20x30L	1.99	
100A	HSK100A-SMA16CE-100	P2803313CE	16	38	100	17	M8x16L	2.63
	HSK100A-SMA22CE-50	P2803314CE	22	48	50	19	M10x18L	2.34
	HSK100A-SMA22CE-100	P2803315CE	22	48	100	19	M10x18L	3.02
	HSK100A-SMA22CE-160	P2803316CE	22	48	160	19	M10x18L	3.85
	HSK100A-SMA27CE-50	P2803317CE	27	60	50	21	M12x22L	2.54
	HSK100A-SMA27CE-100	P2803318CE	27	60	100	21	M12x22L	3.60
	HSK100A-SMA27CE-160	P2803319CE	27	60	160	21	M12x22L	4.90
	HSK100A-SMA32CE-50	P2803320CE	32	78	50	24	M16x26L	2.90
	HSK100A-SMA32CE-100	P2803321CE	32	78	100	24	M16x26L	4.68
	HSK100A-SMA32CE-160	P2803322CE	32	78	160	24	M16x26L	6.86
	HSK100A-SMA40CE-60	P2803323CE	40	89	60	27	M20x30L	3.68
	HSK100A-SMA40CE-100	P2803324CE	40	89	100	27	M20x30L	5.51
	HSK100A-SMA40CE-160	P2803325CE	40	89	160	27	M20x30L	8.32

- ▶ Inch type products are available.
- ▶ With "Coolant Through" by coolant channels.
- ▶ For parts, please refer to page D311.

**SHELL MILL ARBOR (FLANGE MOUNTING)**

AUFNAHMEDORN FÜR FRÄSER MIT BOHRUNG  
MANDRIN PORTE-FRAISES  
MANDRINO CON TRASCINAMENTO FISSO  
PORTA FRESAS

**HSK-A**



Unit : mm

TAPER No.	MODEL No.	EDP No.	d	D1	D2	D3	L	H1	M (TAP)	DRIVE KEY & BOLT	WEIGHT (Kg)
100A	HSK100A-SMF60-75	P2524025	14	60	129	101.6	75	40	4-M16	25.4 x 25.4 x 31.5, M12-25L	-

- ▶ Inch type products are available.

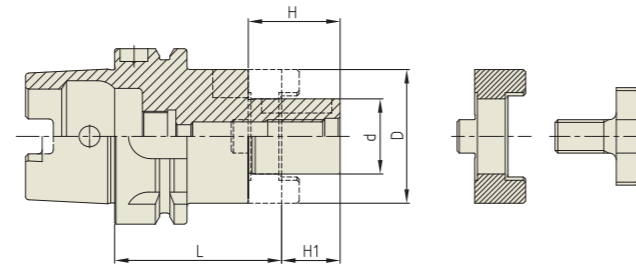
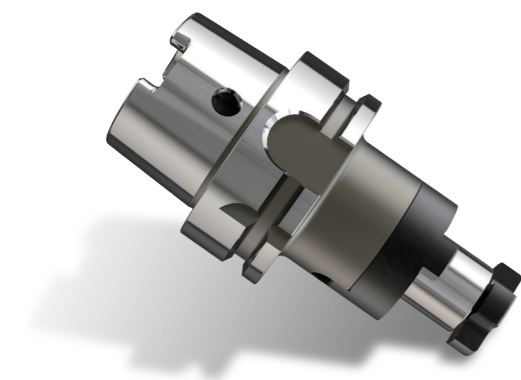
# YIG COMBI-SHELL MILL ARBOR

CMA

## COMBI-SHELL MILL ARBOR

KOMBI-AUFNAHMEDORN FÜR FRÄSER MIT BOHRUNG  
MANDRIN PORTE-FRAISES COMBINÉS  
MANDRINO PORTA FRESE  
PORTA FRESAS COMBINADO

HSK-A



Unit : mm								
TAPER No.	MODEL No.	EDP No.	d	L	D	H1	H	WEIGHT (Kg)
50A	HSK50A-CMA16-50	P2562006	16	50	32	17	27	0.56
	HSK50A-CMA22-50	P2562007	22	50	40	19	31	0.66
	HSK50A-CMA27-65	P2562008	27	65	48	21	33	0.96
	HSK50A-CMA32-65	P2562009	32	65	58	24	38	1.15
63A	HSK63A-CMA16-60	P2562001	16	60	32	17	27	0.88
	HSK63A-CMA22-60	P2562002	22	60	40	19	31	1.02
	HSK63A-CMA27-60	P2562003	27	60	48	21	33	1.20
	HSK63A-CMA32-60	P2562004	32	60	53	24	38	1.43
	HSK63A-CMA40-70	P2562005	40	70	70	27	41	1.93
100A	HSK100A-CMA16-60	P2562011	16	60	32	17	27	2.22
	HSK100A-CMA22-60	P2562012	22	60	40	19	31	2.34
	HSK100A-CMA27-60	P2562013	27	60	48	21	33	2.56
	HSK100A-CMA32-60	P2562014	32	60	58	24	38	2.69
	HSK100A-CMA40-70	P2562015	40	70	70	27	41	3.39
	HSK100A-CMA50-80	P2562010	50	80	90	30	46	4.50

► Inch type products are available.  
► For parts, please refer to page D312.

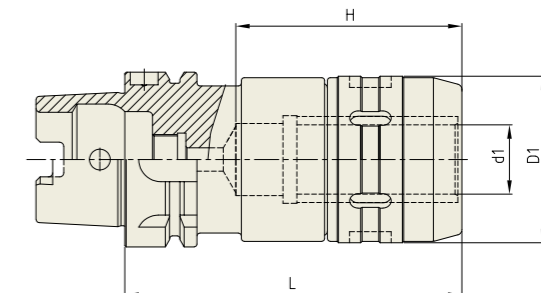
# YIG POWER MILLING CHUCK

C

## HIGH-SPEED POWER MILLING CHUCK

HOCHGESCHWINDIGKEITS FRÄSERFUTTER  
MANDRIN PORTE FRAISE À GRANDE VITESSE  
MANDRINI PORTA FRESE PER ALTA VELOCITÀ  
PORTAHERRAMIENTAS PARA FRESADO DE ALTA VELOCIDAD

HSK-A



Unit : mm							
TAPER No.	MODEL No.	EDP No.	d1	D1	L	H	WEIGHT (Kg)
50A	HSK50A-C20-100HS	P2773102	20	54	100	70	1.30
63A	HSK63A-C20-105HS	P2562016	20	54	105	70	1.50
	HSK63A-C25-120HS	P2773103	25	62	120	80	2.20
100A	HSK63A-C32-130HS	P2562017	32	72	130	100	2.70
	HSK100A-C20-110HS	P2773104	20	54	110	70	3.50
	HSK100A-C25-130HS	P2773105	25	62	130	80	3.80
	HSK100A-C32-135HS	P2773101	32	72	135	100	4.20
	HSK100A-C42-135HS	P2773106	42	72	135	100	5.30

► Inch type products are available.  
► Balancing Grade is adjusted on Basic holder only without Clamping Cap.  
► For applicable collet and spanner, please refer to the page D314.

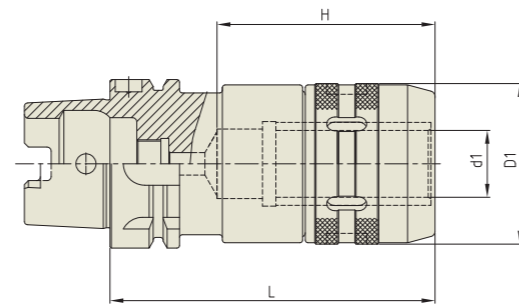
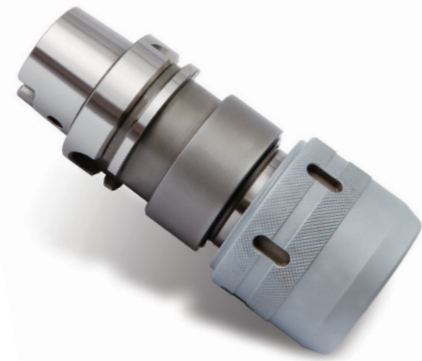
**YG POWER MILLING CHUCK**

**C**

**POWER MILLING CHUCK**

FRÄSERSPANNFUTTER  
MANDRIN PORTE FRAISE  
MANDRINI PORTA FRESA  
PORTAHERRAMIENTAS PARA FRESADO

**HSK-A**



Unit : mm

TAPER No.	MODEL No.	EDP No.	d1	D1	L	H	WEIGHT (Kg)
50A	HSK50A-C20-100	P2773151	20	54	100	70	1.30
63A	HSK63A-C20-105	P2773152	20	54	105	70	1.50
	HSK63A-C32-130	P2600032	32	72	130	100	2.70
100A	HSK100A-C20-110	P2773153	20	54	110	70	3.50
	HSK100A-C32-135	P2773154	32	72	135	100	4.20
	HSK100A-C42-135	P2773155	42	92	135	100	5.30

- ▶ Inch type products are available.
- ▶ For applicable collet and spanner, please refer to the page D314.

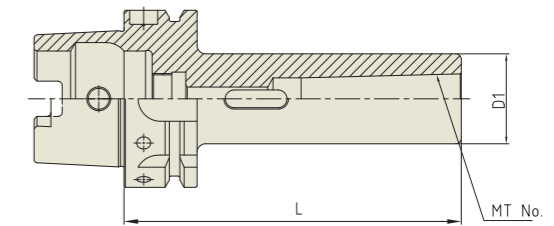
**YG MORSE TAPER ARBOR**

**MTA**

**MORSE TAPER ARBOR**

EINSATZHÜLSEN FÜR MORSEEGEL  
DOUILLES DE RÉDUCTION CÔNE MORSE  
MANDRINO RIDUZIONE CONO MORSE  
REDUCTORES A MORSE

**HSK-A**



Unit : mm

TAPER No.	MODEL No.	EDP No.	MT No.	D1	L	WEIGHT (Kg)
50A	HSK50A-MTA1-100	P2565005	1	25	100	0.67
	HSK50A-MTA2-120	P2565006	2	32	120	0.78
	HSK50A-MTA3-140	P2565007	3	40	140	0.91
63A	HSK63A-MTA1-100	P2565001	1	25	100	0.87
	HSK63A-MTA2-120	P2565002	2	32	120	1.28
	HSK63A-MTA3-140	P2565003	3	40	140	1.44
	HSK63A-MTA4-160	P2565004	4	48	160	1.86
100A	HSK100A-MTA1-110	P2565011	1	25	110	2.12
	HSK100A-MTA2-120	P2565012	2	32	120	2.41
	HSK100A-MTA3-150	P2565013	3	40	150	2.82
	HSK100A-MTA4-170	P2565014	4	48	170	3.63
	HSK100A-MTA5-200	P2565015	5	63	200	4.80

- ▶ Inch type products are available.

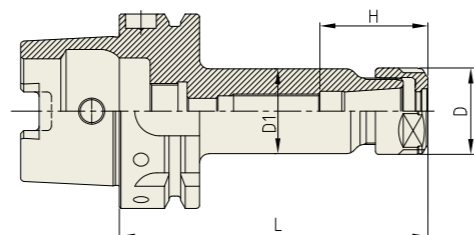
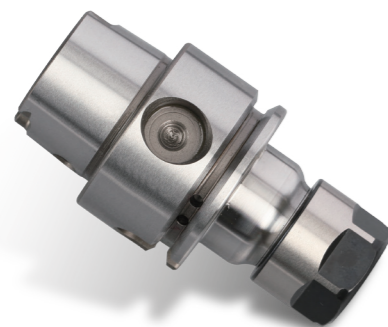


SKA

**SK SLIM CHUCK**

SK SCHLANKE FUTTER  
MANDRIN TYPE SK MINCE  
SK MANDRINI SOTTILI  
PORTAHERRAMIENTAS SK EJE REDUCIDO

HSK-A



Unit : mm

TAPER No.	MODEL No.	EDP No.	CLAMPING RANGE	L	D	D1	H	COLLET	WEIGHT (Kg)
32A	HSK32A-SKA06-50	P2775860	1.8 - 6.0	50	20	19.5	31	SKC6	0.50
	HSK32A-SKA10-60	P2775861	1.75 - 10.0	60	28	26	35	SKC10	0.70
40A	HSK40A-SKA06-60	P2775862	1.8 - 6.0	60	20	19.5	31	SKC6	0.70
	HSK40A-SKA10-60	P2775863	1.75 - 10.0	60	28	27.5	35	SKC10	0.90
	HSK40A-SKA13-80	P2775864	2.75 - 13.0	80	33	33	43.6	SKC13	1.00
50A	HSK50A-SKA06-80	P2775865	1.8 - 6.0	80	20	19.5	31	SKC6	0.90
	HSK50A-SKA10-100	P2775866	1.75 - 10.0	100	28	27.5	35	SKC10	1.10
	HSK50A-SKA13-100	P2775867	2.75 - 13.0	100	33	33	43.6	SKC13	1.20
63A	HSK63A-SKA06-100	P2775868	1.8 - 6.0	100	20	19.5	31	SKC6	1.40
	HSK63A-SKA10-100	P2775869	1.75 - 10.0	100	28	27.5	35	SKC10	1.60
	HSK63A-SKA13-100	P2775870	2.75 - 13.0	100	33	33	43.6	SKC13	1.70
	HSK63A-SKA16-120	P2775871	2.75 - 16.0	120	40	40	52	SKC16	1.70
	HSK63A-SKA20-120	P2775872	3.5 - 20.0	120	48.5	48.5	59.6	SKC20	2.10
80A	HSK80A-SKA06-120	P2775893	1.8 - 6.0	120	20	19.5	31	SKC6	1.60
	HSK80A-SKA10-120	P2775875	1.75 - 10.0	120	28	27.5	35	SKC10	1.72
	HSK80A-SKA13-120	P2775876	2.75 - 13.0	120	33	33	43.6	SKC13	1.79
	HSK80A-SKA16-120	P2775877	2.75 - 16.0	120	40	40	52	SKC16	1.96
	HSK80A-SKA20-130	P2775878	3.5 - 20.0	130	48.5	48.5	59.6	SKC20	2.39
100A	HSK100A-SKA06-120	P2775880	1.8 - 6.0	120	20	19.5	31	SKC6	4.00
	HSK100A-SKA10-150	P2775881	1.75 - 10.0	150	28	27.5	35	SKC10	4.50
	HSK100A-SKA13-150	P2775882	2.75 - 13.0	150	33	33	43.6	SKC13	4.60
	HSK100A-SKA16-150	P2775883	2.75 - 16.0	150	40	40	52	SKC16	5.10
	HSK100A-SKA20-150	P2775884	3.5 - 20.0	150	48.5	48.5	59.6	SKC20	5.40
	HSK100A-SKA25-160	P2775885	16.0 - 25.4	160	55	55	63.4	SKC25	5.50

- ▶ Inch type products are available.
- ▶ Balancing grade G2.5 at 25,000RPM or U max. < 1gmm.
- ▶ For applicable Collet, Nut and Spanner, please refer to page D315~D317.

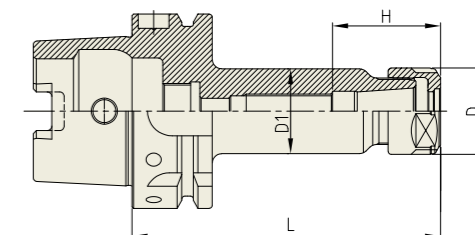
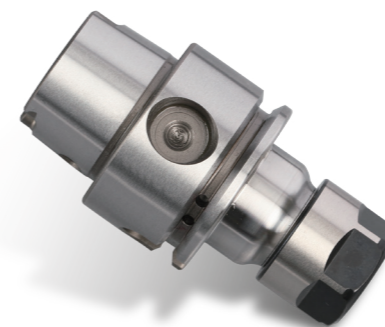


SKA

**SK SLIM CHUCK**

SK SCHLANKE FUTTER  
MANDRIN TYPE SK MINCE  
SK MANDRINI SOTTILI  
PORTAHERRAMIENTAS SK EJE REDUCIDO

HSK-A



Unit : mm

TAPER No.	MODEL No.	EDP No.	CLAMPING RANGE	L	D	D1	H	COLLET	WEIGHT (Kg)
32A	HSK32A-SKA06-50	P2775860	1.8 - 6.0	50	20	19.5	31	SKC6	0.50
	HSK32A-SKA10-60	P2775861	1.75 - 10.0	60	28	26	35	SKC10	0.70
40A	HSK40A-SKA06-60	P2775862	1.8 - 6.0	60	20	19.5	31	SKC6	0.70
	HSK40A-SKA10-60	P2775863	1.75 - 10.0	60	28	27.5	35	SKC10	0.90
	HSK40A-SKA13-80	P2775864	2.75 - 13.0	80	33	33	43.6	SKC13	1.00
50A	HSK50A-SKA06-80	P2775865	1.8 - 6.0	80	20	19.5	31	SKC6	0.90
	HSK50A-SKA10-100	P2775866	1.75 - 10.0	100	28	27.5	35	SKC10	1.10
	HSK50A-SKA13-100	P2775867	2.75 - 13.0	100	33	33	43.6	SKC13	1.20
63A	HSK63A-SKA06-100	P2775868	1.8 - 6.0	100	20	19.5	31	SKC6	1.40
	HSK63A-SKA10-100	P2775869	1.75 - 10.0	100	28	27.5	35	SKC10	1.60
	HSK63A-SKA13-100	P2775870	2.75 - 13.0	100	33	33	43.6	SKC13	1.70
	HSK63A-SKA16-120	P2775871	2.75 - 16.0	120	40	40	52	SKC16	1.70
	HSK63A-SKA20-120	P2775872	3.5 - 20.0	120	48.5	48.5	59.6	SKC20	2.10
80A	HSK80A-SKA06-120	P2775893	1.8 - 6.0	120	20	19.5	31	SKC6	1.60
	HSK80A-SKA10-120	P2775875	1.75 - 10.0	120	28	27.5	35	SKC10	1.72
	HSK80A-SKA13-120	P2775876	2.75 - 13.0	120	33	33	43.6	SKC13	1.79
	HSK80A-SKA16-120	P2775877	2.75 - 16.0	120	40	40	52	SKC16	1.96
	HSK80A-SKA20-130	P2775878	3.5 - 20.0	130	48.5	48.5	59.6	SKC20	2.39
100A	HSK100A-SKA06-120	P2775880	1.8 - 6.0	120	20	19.5	31	SKC6	4.00
	HSK100A-SKA10-150	P2775881	1.75 - 10.0	150	28	27.5	35	SKC10	4.50
	HSK100A-SKA13-150	P2775882	2.75 - 13.0	150	33	33	43.6	SKC13	4.60
	HSK100A-SKA16-150	P2775883	2.75 - 16.0	150	40	40	52	SKC16	5.10
	HSK100A-SKA20-150	P2775884	3.5 - 20.0	150	48.5	48.5	59.6	SKC20	5.40
	HSK100A-SKA25-160	P2775885	16.0 - 25.4	160	55	55	63.4	SKC25	5.50

- ▶ Inch type products are available.
- ▶ For applicable Collet, Nut and Spanner, please refer to page D315~D317.



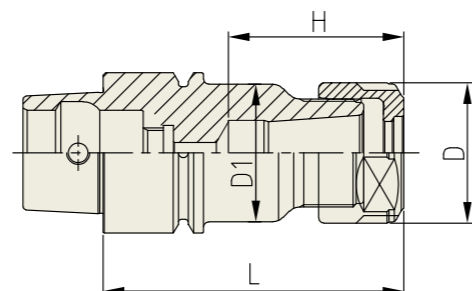


SKA

### SK SLIM CHUCK

SK SCHLANKE FUTTER  
MANDRIN TYPE SK MINCE  
SK MANDRINI SOTTILI  
PORTAHERRAMIENTAS SK EJE REDUCIDO

HSK-E



Unit : mm

TAPER No.	MODEL No.	EDP No.	CLAMPING RANGE	L	D	D1	H	COLLET	WEIGHT (Kg)
25E	HSK25E-SKA06-45	P2775886	1.8 - 6.0	45	20	19.5	31	SKC6	0.12
	HSK25E-SKA10-50	P2775887	1.75 - 10.0	50	28	21.5	35	SKC10	0.14
32E	HSK32E-SKA06-50	P2775888	1.8 - 6.0	50	20	19.5	31	SKC6	0.50
	HSK32E-SKA10-60	P2775889	1.75 - 10.0	60	28	26	35	SKC10	0.70
40E	HSK40E-SKA06-60	P2775890	1.8 - 6.0	60	20	19.5	31	SKC6	0.70
	HSK40E-SKA10-60	P2775891	1.75 - 10.0	60	28	27.5	35	SKC10	0.90
	HSK40E-SKA13-80	P2775892	2.75 - 13.0	80	33	33	43.6	SKC13	1.00

► Balancing grade G2.5 at 25,000RPM or U max. < 1gmm.



Unit : mm

TAPER No.	MODEL No.	EDP No.	CLAMPING RANGE	L	D	D1	H	COLLET	WEIGHT (Kg)
25E	HSK25E-SKA06-45	P2773523	1.8 - 6.0	45	20	19.5	31	SKC6	0.12
	HSK25E-SKA10-50	P2773524	1.75 - 10.0	50	28	21.5	35	SKC10	0.14
32E	HSK32E-SKA06-50	P2773525	1.8 - 6.0	50	20	19.5	31	SKC6	0.50
	HSK32E-SKA10-60	P2773526	1.75 - 10.0	60	28	26	35	SKC10	0.70
40E	HSK40E-SKA06-60	P2773527	1.8 - 6.0	60	20	19.5	31	SKC6	0.70
	HSK40E-SKA10-60	P2773528	1.75 - 10.0	60	28	27.5	35	SKC10	0.90
	HSK40E-SKA13-80	P2773529	2.75 - 13.0	80	33	33	43.6	SKC13	1.00

► Inch type products are available.

► For applicable Collet, Nut and Spanner, please refer to page D315~D317.

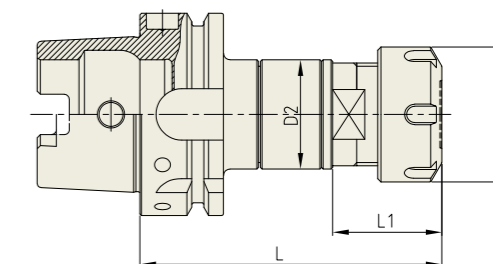
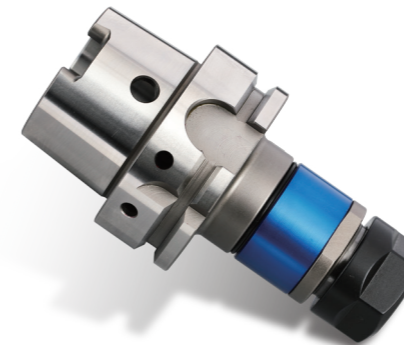


SYTER

### SYNCHRO TAPPING CHUCK (ER TYPE)

SYNCHRO GEWINDESCHNEIDFUTTER (ER)  
SYNCHRO TARAUDER (ER)  
SINCRO MANDRINI PER MASCHIATURA (ER)  
SINCRO PORTAMACHOS (ER)

HSK-A



Unit : mm

TAPER No.	MODEL No.	EDP No.	TAP SIZE	NUT/COLLET	D1	D2	L	L1	TENSION/COMPRESSION	WEIGHT (Kg)
63A	HSK63A-SYTER12-105	P2773812	M3-M12	ER16	28	34	105	31	±0.2	-
	HSK63A-SYTER16-106	P2773808	M3-M16	ER20	34	34	106	31	±0.2	0.95
	HSK63A-SYTER16-120	P2773804	M3-M16	ER20	34	34	120	31	±0.2	-
	HSK63A-SYTER20-110	P2773809	M3-M20	ER25	42	34	110	37.5	±0.2	0.95
	HSK63A-SYTER20-120	P2773805	M3-M20	ER25	42	34	120	37.5	±0.2	-
	HSK63A-SYTER27-115	P2773810	M4-M27	ER32	50	45	115	41	±0.2	1.34
	HSK63A-SYTER27-155	P2773813	M4-M27	ER32	50	45	155	41	±0.2	-
100A	HSK63A-SYTER33-130	P2773814	M4-M33	ER40	63	62	130	60	±0.2	-
	HSK100A-SYTER20-106	P2773807	M3-M20	ER25	42	34	106	36	±0.2	0.95
	HSK100A-SYTER27-124	P2773815	M4-M27	ER32	50	45	124	41	±0.2	-
	HSK100A-SYTER27-155	P2773816	M4-M27	ER32	50	45	155	41	±0.2	-
	HSK100A-SYTER33-135	P2773817	M4-M33	ER40	63	62	135	60	±0.2	-

► Feature :

- Compensation for synchronization errors to extend tap life and to improve thread quality.
  - To compensate for pitch tolerances of taps.
  - For machine with synchronized spindle.
- Inch type products are available.
- ER collet of page D296~D302, and Tap ER collet of page D303~D304 are applicable.

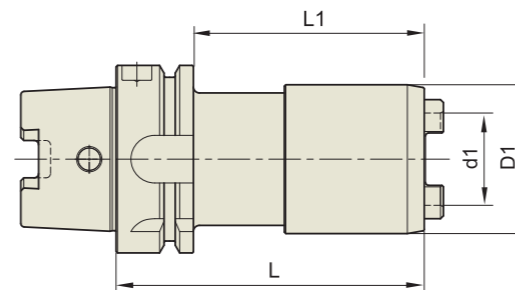
# SYNCHRO TAPPING CHUCK

SYTC

## SYNCHRO TAPPING CHUCK (QUICK CHANGE TYPE)

SYNCHRO GEWINDESCHNEID-SCHNELLWECHSELFUTTER  
 SYNCHRO TARAUDER À CHANGEMENT RAPIDE  
 SINCRO MANDRINO PER MASCHIARE  
 SINCRO PORTAMACHOS DE CAMBIO RAPIDO

HSK-A



Unit : mm

TAPER No.	MODEL No.	EDP No.	TAP SIZE	TAP ADAPTOR	d1	D1	L	L1	WEIGHT (Kg)
32A	HSK32A-SYTC12-75	P2774314	M3-M12	TCS12	19	36	75	55	0.32
50A	HSK50A-SYTC12-72	P2774315	M3-M12	TCS12	19	36	72	46	0.54
	HSK50A-SYTC20-91	P2774316	M6-M24	TCS24	31	50	91	65	0.70
63A	HSK63A-SYTC12-75	P2774301	M3-M12	TCS12	19	36	75	49	0.82
	HSK63A-SYTC12-80	P2774302	M3-M12	TCS12	19	36	80	54	0.85
	HSK63A-SYTC12-120	P2774303	M3-M12	TCS12	19	36	120	94	1.08
	HSK63A-SYTC12-152	P2774304	M3-M12	TCS12	19	36	152	126	1.27
	HSK63A-SYTC12-180	P2774305	M3-M12	TCS12	19	36	180	154	1.44
	HSK63A-SYTC20-89	P2774306	M6-M24	TCS24	31	50	89	63	0.84
	HSK63A-SYTC33-121	P2774307	M18-M38	TCS38	48	74	121	95	1.45
	100A	HSK100A-SYTC12-75	P2774308	M3-M12	TCS12	19	36	75	43
HSK100A-SYTC12-160		P2774309	M3-M12	TCS12	19	36	160	131	2.60
HSK100A-SYTC20-94		P2774310	M6-M24	TCS24	31	50	94	65	2.39
HSK100A-SYTC20-160		P2774311	M6-M24	TCS24	31	50	160	131	2.99
HSK100A-SYTC33-127		P2774312	M18-M38	TCS38	48	74	127	98	3.11
	HSK100A-SYTC33-160	P2774313	M18-M38	TCS38	48	74	160	131	4.03

- Feature :
- Compensation for synchronization errors to extend tap life and to improve thread quality.
  - To compensate for pitch tolerances of taps.
  - For machine with synchronized spindle.
- For applicable Tap Adaptor, please refer to page D318~D319.

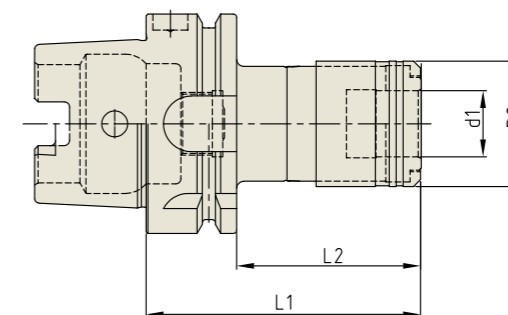
# ONE STEP TAPPING CHUCK

OTC

## ONE STEP TAPPING CHUCK

GEWINDE-SCHNELLWECHSELFUTTER  
 MANDRIN DE TARAUDAGE À CHANGEMENT RAPIDE  
 PORTAMASCHI A CAMBIO RAPIDO  
 MANDRINO DE CAMBIO RÁPIDO CON ROSCA

HSK-A



Unit : mm

TAPER No.	MODEL No.	EDP No.	d1	D2	L1	L2	LENGTH COMPENSATION		WEIGHT (Kg)
							Compression	Tension	
63A	HSK63A-OTC-M3-M12-77	P2802401	19	36	77	51	7.5	7.5	1.10
	HSK63A-OTC-M8-M20-110	P2802402	31	53	110	84	12.5	12.5	1.50
	HSK63A-OTC-M14-M36-155	P2802403	48	78	155	129	20	20	3.30
100A	HSK100A-OTC-M3-M12-85.5	P2802404	19	36	85.5	56.5	7.5	7.5	3.00
	HSK100A-OTC-M8-M20-119.5	P2802405	31	53	119.5	90.5	12.5	12.5	3.30
	HSK100A-OTC-M14-M36-161	P2802406	48	78	161	132	20	20	5.20

► For applicable Tap Adaptor, please refer to page D318~D319.

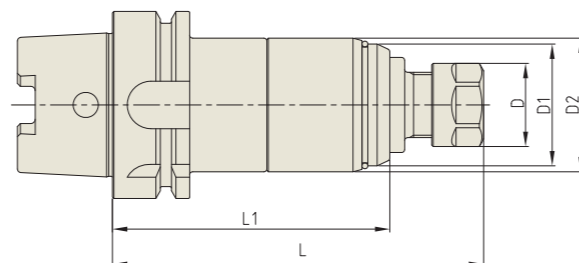
**YIG TAPPING ER CHUCK**

**TER**

**TAPPING ER CHUCK**

ER - GEWINDESCHNEIDFUTTER  
 MANDRIN DE TARAUDAGE PINCE ER  
 MANDRINI PORTAPINZA ER PER MASCHIATURA  
 PORTAPINZAS ER PARA MACHOS

**HSK-A**



Unit : mm

TAPER No.	MODEL No.	EDP No.	D	D1	D2	L	L1	NUT / COLLET	WEIGHT (Kg)
50A	HSK50A-TER16-125	P2774107	28	41	45	125	93.4	ER16	1.20
	HSK50A-TER16-150	P2774108	28	41	45	150	118.4	ER16	1.30
63A	HSK63A-TER16-125	P2774101	28	41	45	125	93.4	ER16	1.70
	HSK63A-TER16-150	P2774102	28	41	45	150	118.4	ER16	1.85
	HSK63A-TER32-150	P2774103	50	58	63	150	112	ER32	2.10
	HSK63A-TER32-180	P2774109	50	58	63	180	142	ER32	2.30
100A	HSK100A-TER16-130	P2774104	28	41	45	130	98.4	ER16	4.00
	HSK100A-TER16-150	P2774105	28	41	45	150	118.4	ER16	4.20
	HSK100A-TER32-150	P2774106	50	58	63	150	112	ER32	4.40
	HSK100A-TER32-180	P2774110	50	58	63	180	142	ER32	4.60

► Inch type products are available.  
 ► ER collet of page D296~D302 and Tap ER collet of page D303~D304 are applicable.

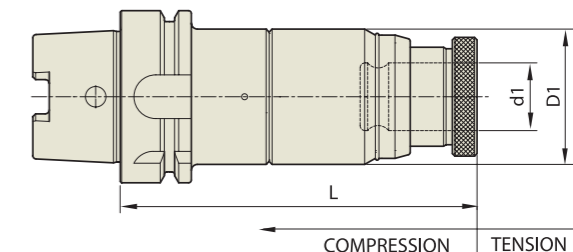
**YIG TAPPING CHUCK**

**TC**

**TAPPING CHUCK**

GEWINDESCHNEID - SCHNELLWECHSELFUTTER  
 TARAUDER À CHANGEMENT RAPIDE  
 MANDRINO PER MASCHIARE  
 PORTAMACHOS DE CAMBIO RAPIDO

**HSK-A**



Unit : mm

TAPER No.	MODEL No.	EDP No.	TAP SIZE	TAP ADAPTOR	LENGTH COMPENSATION		d1	D1	L	WEIGHT (Kg)
					Compression	Tension				
50A	HSK50A-TC12-120	P2774506	M3-M12	TCS12	5	15	19	45	120	0.80
	HSK63A-TC12-120	P2774501	M3-M12	TCS12	5	15	19	45	120	1.00
63A	HSK63A-TC12-150	P2774507	M3-M12	TCS12	5	15	19	45	150	1.70
	HSK63A-TC24-142	P2774502	M6-M24	TCS24	5	20	31	63	142	2.40
	HSK63A-TC24-172	P2774508	M6-M24	TCS24	5	20	31	63	172	2.70
100A	HSK100A-TC12-130	P2774503	M3-M12	TCS12	5	15	19	45	130	4.30
	HSK100A-TC12-175	P2774509	M3-M12	TCS12	5	15	19	45	175	4.80
	HSK100A-TC12-220	P2774510	M3-M12	TCS12	5	15	19	45	220	5.30
	HSK100A-TC24-142	P2774504	M6-M24	TCS24	5	20	31	63	142	5.20
	HSK100A-TC24-187	P2774511	M6-M24	TCS24	5	20	31	63	187	6.60
	HSK100A-TC38-200	P2774505	M18-M38	TCS38	10	25	48	98	200	8.00

► For applicable Tap Adaptor, please refer to page D318~D319.

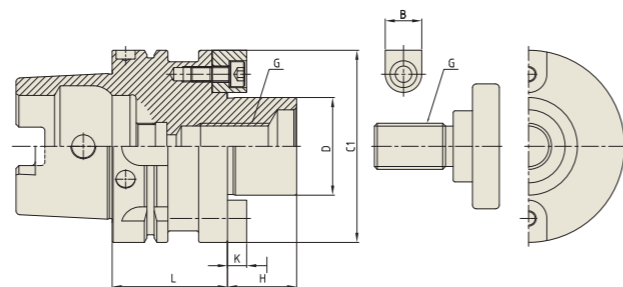
**YG** FACE MILL ARBOR

FMA

**FACE MILL ARBOR**

AUFNAHMEDORN FÜR MESSERKÖPFE  
ARBRE PORTE FRAISE À ALÉSAGE  
MANDRINO PORTA FRESE FRONTALE  
EJE PARA PLATOS DE PLACAS

HSK-A



Unit : mm

TAPER No.	MODEL No.	EDP No.	D	L	C1	H	B	K	G	WEIGHT (Kg)
40A	HSK40A-FMA25.4-50	P2779243	25.4	50	50	22	9.52	4.8	M12	0.61
50A	HSK50A-FMA25.4-60	P2779244	25.4	60	50	22	9.52	4.8	M12	0.90
63A	HSK63A-FMA25.4-45	P2779245	25.4	45	50	22	9.52	4.8	M12	1.03
	HSK63A-FMA31.75-50	P2779246	31.75	50	60	30	12.7	6.35	M16	1.26
100A	HSK100A-FMA25.4-45	P2779247	25.4	45	50	22	9.52	4.8	M12	2.31
	HSK100A-FMA31.75-50	P2779248	31.75	50	60	30	12.7	6.35	M16	2.61
	HSK100A-FMA38.1-55	P2779249	38.1	55	80	34	15.87	7.8	M20	3.22
	HSK100A-FMA50.8-60	P2779250	50.8	60	100	36	19.05	11	M24	4.06

► For parts, please refer to page D313.

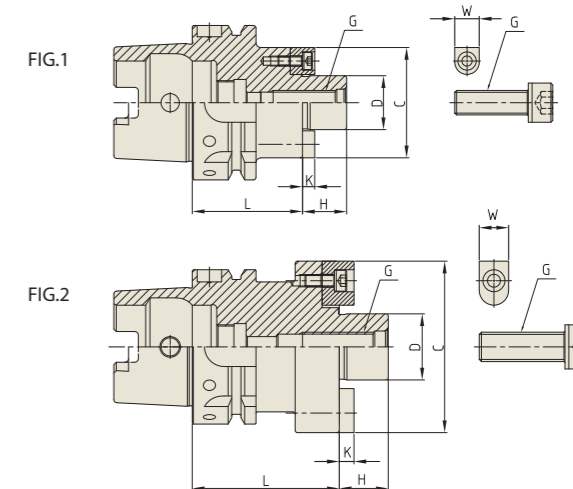
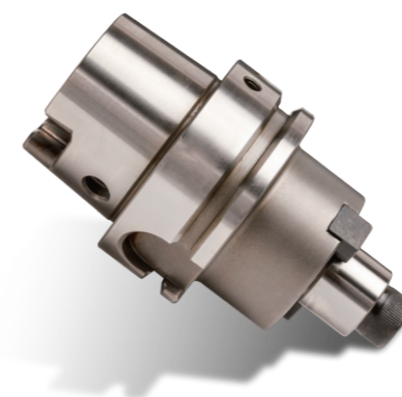
**YG** FACE MILL ARBOR

FMC

**FACE MILL ARBOR**

AUFNAHMEDORN FÜR MESSERKÖPFE  
ARBRE PORTE FRAISE À ALÉSAGE  
MANDRINO PORTA FRESE FRONTALE  
EJE PARA PLATOS DE PLACAS

HSK-A



Unit : mm

TAPER No.	MODEL No.	EDP No.	D	L	C	H	W	K	G	FIG.	WEIGHT (Kg)
40A	HSK40A-FMC16-45	P2774707	16	45	34	17	8	4	M8	1	0.43
	HSK40A-FMC22-50	P2774708	22	50	45	18	10	5	M10	2	0.56
	HSK40A-FMC27-60	P2774709	27	60	70	20	12	6	M12	2	1.02
50A	HSK50A-FMC16-40	P2774710	16	40	34	17	8	4	M8	1	0.54
	HSK50A-FMC22-50	P2774711	22	50	45	18	10	5	M10	2	0.73
	HSK50A-FMC27-60	P2774712	27	60	70	20	12	6	M12	2	1.20
63A	HSK63A-FMC22-45	P2774701	22	45	45	18	10	5	M10	1	0.97
	HSK63A-FMC27-60	P2774702	27	60	70	20	12	6	M12	2	1.57
	HSK63A-FMC32-60	P2774703	32	60	83	22	14	7	M16	2	1.81
100A	HSK100A-FMC22-50	P2774704	22	50	45	18	10	5	M10	1	2.33
	HSK100A-FMC27-60	P2774705	27	60	70	20	12	6	M12	1	3.02
	HSK100A-FMC32-60	P2774706	32	60	85	22	14	7	M16	1	3.41

► For parts, please refer to page D313.

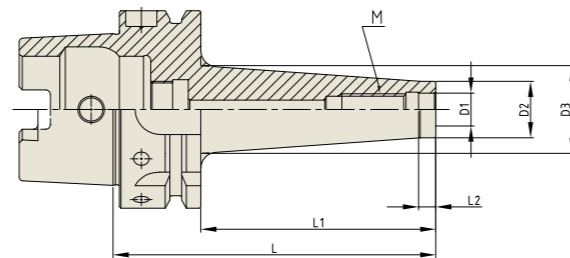
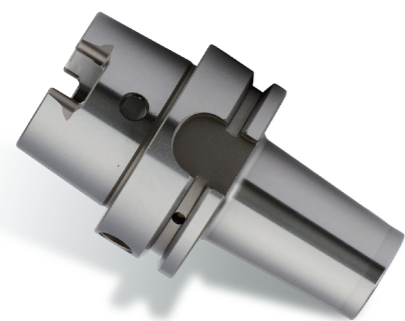
# YIG COPY MILL ARBOR

M

## COPY MILL ARBOR

WERKZEUGAUFNAHME FÜR EINSCHRAUBFRÄSER MIT GEWINDE  
 MANDRIN POUR FRAISES À QUEUE FILETÉE AVEC FILETAGE  
 MANDRINO PER FRESE MODULARI FILETTATE  
 PORTAHERRAMIENTAS PARA FRESAS DE ENROSCAR CON ROSCA

HSK-A



Unit : mm									
TAPER No.	MODEL No. (M-L1)	EDP No.	D1	D2	D3	L	L1	L2	WEIGHT (Kg)
63A	HSK63A-M5-25	P2801801	5.5	10	13	51	25	5	0.77
	HSK63A-M6-25	P2801802	6.5	10	13	51	25	5	0.77
	HSK63A-M8-25	P2801803	8.5	13	15	51	25	5	0.81
	HSK63A-M8-50	P2801804	8.5	13	23	76	50	5	1.09
	HSK63A-M8-75	P2801805	8.5	13	23	101	75	5	1.29
	HSK63A-M10-25	P2801806	10.5	18	20	51	25	5	0.90
	HSK63A-M10-50	P2801807	10.5	18	23	76	50	5	1.20
	HSK63A-M10-75	P2801808	10.5	18	28	101	75	5	1.33
	HSK63A-M10-100	P2801809	10.5	18	32	126	100	5	1.45
	HSK63A-M10-150	P2801810	10.5	18	36.5	176	150	5	1.60
	HSK63A-M12-25	P2801811	12.5	21	24	51	25	5	0.98
	HSK63A-M12-50	P2801812	12.5	21	24	76	50	5	1.29
	HSK63A-M12-75	P2801813	12.5	21	31	101	75	5	1.92
	HSK63A-M12-100	P2801814	12.5	21	33	126	100	5	2.48
	HSK63A-M12-150	P2801815	12.5	21	40	176	150	5	4.19
	HSK63A-M16-25	P2801816	17	29	29	51	25	5	0.78
	HSK63A-M16-50	P2801817	17	29	34	76	50	5	1.85
	HSK63A-M16-75	P2801818	17	29	34	101	75	5	2.46
	HSK63A-M16-100	P2801819	17	29	36	126	100	5	3.23
	HSK63A-M16-150	P2801820	17	29	42.5	176	150	5	5.39
100A	HSK100A-M8-50	P2801821	8.5	13	23	79	50	5	2.33
	HSK100A-M10-50	P2801822	10.5	18	23	79	50	5	2.35
	HSK100A-M10-100	P2801823	10.5	18	32	129	100	10	2.59
	HSK100A-M10-150	P2801824	10.5	18	36.5	179	150	10	2.90
	HSK100A-M12-50	P2801825	12.5	21	24	79	50	5	2.37
	HSK100A-M12-100	P2801826	12.5	21	33	129	100	10	2.64
	HSK100A-M12-150	P2801827	12.5	21	40	179	150	10	3.05
	HSK100A-M16-50	P2801828	17	29	34	79	50	5	2.48
	HSK100A-M16-100	P2801829	17	29	36	129	100	10	2.81
	HSK100A-M16-150	P2801830	17	29	42.5	179	150	10	3.32

► Balancing grade G2.5 at 25,000RPM or U max. < 1gmm.  
 ► For the screw-in milling cutters with thread.

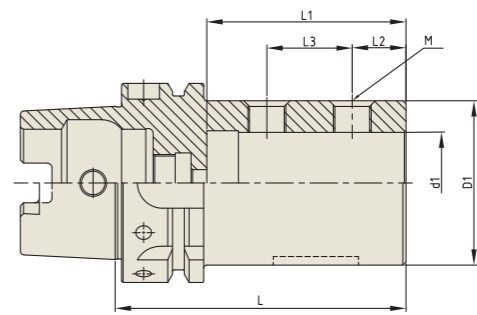
# YIG INDEXABLE DRILL HOLDER

SL

## INDEXABLE DRILL HOLDER

WERKZEUGHALTER FÜR VOLLBOHRER  
 MANDRIN POUR FORETS À PLAQUETTES  
 MANDRINO PER PUNTE A INSERTI  
 SOPORTE PARA HERRAMIENTAS PARA BROCAS DE ACERO MACIZO

HSK-A



Unit : mm										
TAPER No.	MODEL No.	EDP No.	d1	D1	L	L1	L2	L3	M	WEIGHT (Kg)
63A	HSK63A-SL20-80	P2802051	20	40	80	54	15	20	M10	1.04
	HSK63A-SL25-90	P2802052	25	45	90	59	17	23	M12	1.21
	HSK63A-SL32-90	P2802053	32	52	90	63	17	27	M12	1.30
	HSK63A-SL40-105	P2802054	40	60	105	73	22	28	M16	1.58
100A	HSK100A-SL20-90	P2802055	20	40	90	54	15	20	M10	2.71
	HSK100A-SL25-95	P2802056	25	45	95	59	17	23	M12	2.84
	HSK100A-SL32-100	P2802057	32	52	100	63	17	27	M12	3.03
	HSK100A-SL40-110	P2802058	40	60	110	73	22	28	M16	3.32

► Inch type products are available.  
 ► For the indexable drills with parallel shank.

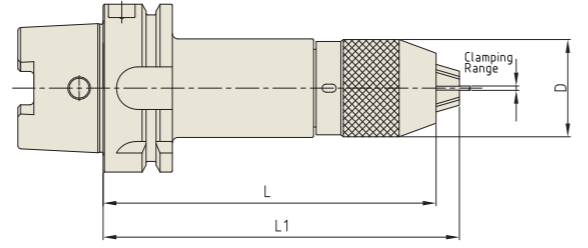


**NPU**

**NC DRILL CHUCK (KEYLESS TYPE)**

NC - BOHRFUTTER  
MANDRIN DE PERÇAGE NC  
NC MANDRINI PORTA PUNTE  
PORTABROCAS PARA BROCAS NC

**HSK-A**



Unit : mm

TAPER No.	MODEL No.	EDP No.	CLAMPING RANGE	D	L (Min.)	L1 (Max.)	WEIGHT (Kg)
40A	HSK40A-NPU8-120	P2775202	0.3 - 8.0	36.5	120	125.7	1.00
50A	HSK50A-NPU8-120	P2775203	0.3 - 8.0	36.5	120	125.7	1.20
	HSK50A-NPU13-150	P2775201	0.3 - 13.0	50.4	150	160	2.10
63A	HSK63A-NPU8-125	P2775204	0.3 - 8.0	36.5	125	130.7	2.10
	HSK63A-NPU13-150	P2775205	0.3 - 13.0	50.4	150	160	3.00
100A	HSK100A-NPU8-130	P2775206	0.3 - 8.0	36.5	130	135.7	4.80
	HSK100A-NPU13-150	P2775207	0.3 - 13.0	50.4	150	160	5.50

► Supplied with hook wrench. (Size NPU 8 : 8S, NPU 13 : 13S)

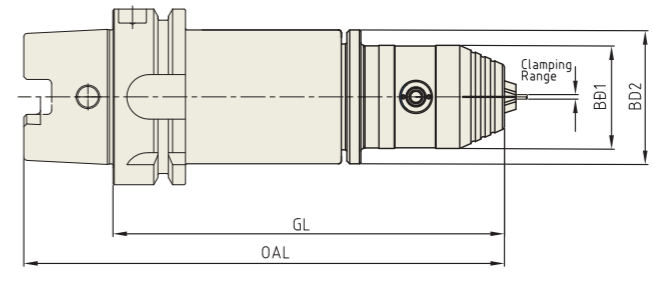


**HKD**

**NC DRILL CHUCK (HEX. KEY TYPE)**

NC - BOHRFUTTER  
MANDRIN DE PERÇAGE NC  
NC MANDRINI PORTA PUNTE  
PORTABROCAS PARA BROCAS NC

**HSK-A**



Unit : mm

TAPER No.	MODEL No.	EDP No.	CLAMPING RANGE	OAL	GL	BD1	BD2	WEIGHT (Kg)
63A	HSK63A-HKD8-155	P2804009	0.3 - 8.0	187	155	37	48	-
	HSK63A-HKD13-175	P2804010	0.3 - 13.0	207	175	50.1	50.1	-

► Supplied with hex. wrench. (Size HKD 8 : 4mm, HKD 13 : 6mm)

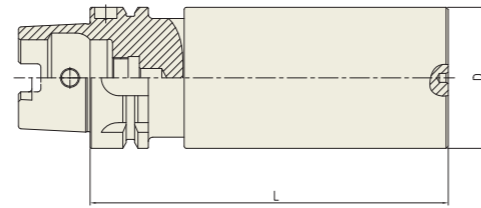
**YG** BLANK BAR

BL

**BLANK BAR**

BOHRSTANGENROHLING  
EBAUCHE DE BARRES D'ALÉSAGE  
BARRA ALESATRICE GREZZA  
PIEZA EN BRUTO PARA BARRAS DE MANDRINAR

HSK-A



Unit : mm

TAPER No.	MODEL No.	EDP No.	D	L	WEIGHT(Kg)
63A	HSK63A-BL63-160	P2779198	63	160	3.91
100A	HSK100A-BL97-250	P2779199	97	250	17.70

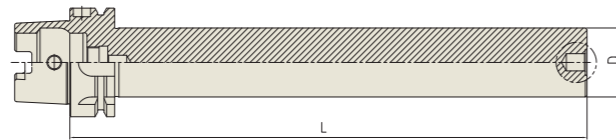
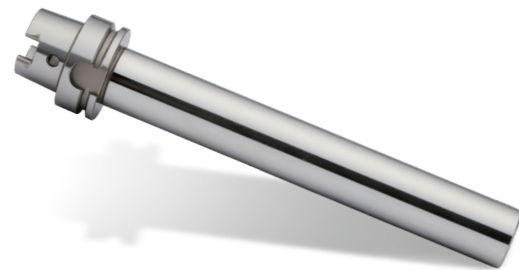
**YG** TEST BAR

TB

**TEST BAR**

KONTROLLDORN  
MANDRIN DE CONTRÔLE  
MANDRINO DI CONTROLLO  
MANDRIL DE CONTROL

HSK-A



Unit : mm

TAPER No.	MODEL No.	EDP No.	D	L	WEIGHT(Kg)
63A	HSK63A-TB40-300	P2802303	40	300	2.90
100A	HSK100A-TB50-300	P2802304	50	300	6.17

YG-1 TOOLING SYSTEM

**STRAIGHT**



- SHRINK FIT HOLDER - EXTENSION
- ER COLLET CHUCK
- SK SLIM CHUCK
- SYNCHRO TAPPING CHUCK
- ONE STEP TAPPING CHUCK
- TAPPING CHUCK
- NC DRILL CHUCK (KEYLESS TYPE)