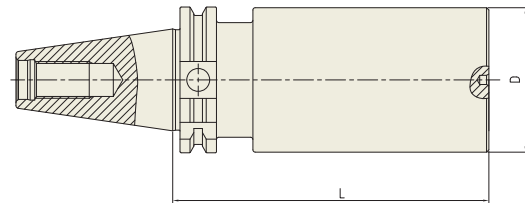


**YG** BLANK BAR

**BL**

**BLANK BAR**

BOHRSTANGENROHLING  
EBAUCHE DE BARRES D ALÉSAGE  
BARRA ALESATRICE GREZZA  
PIEZA EN BRUTO PARA BARRAS DE MANDRINAR



Unit : mm

TAPER No.	MODEL No.	EDP No.	D	L	WEIGHT(Kg)
40	SK40A-BL63-250	P2779196	63	250	6.18
50	SK50A-BL97-315	P2779197	97	315	18.67

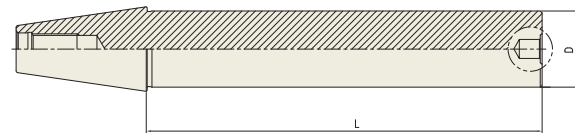
► CAT(ASME B5.50) taper and Inch type products are available.

**YG** TEST BAR

**TB**

**TEST BAR**

KONTROLLDORN  
MANDRIN DE CONTRÔLE  
MANDRINO DI CONTROLLO  
MANDRIL DE CONTROL



Unit : mm

TAPER No.	MODEL No.	EDP No.	D	L	WEIGHT(Kg)
40	SK40A-TB40-300	P2802301	40	300	3.45
50	SK50A-TB50-300	P2803302	50	300	6.44

► CAT(ASME B5.50) taper and Inch type products are available.

**YG-1 TOOLING SYSTEM**

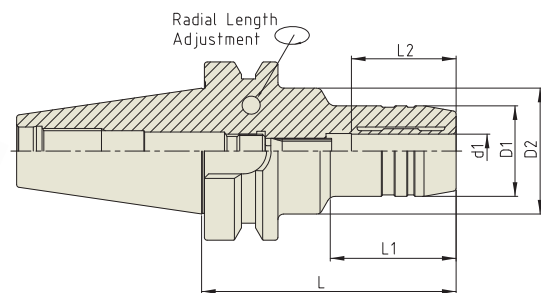
**CBT**  
(BT DUAL CONTACT)



- HYDRAULIC CHUCK
- SHRINK FIT HOLDER
- ER COLLET CHUCK
- END MILL HOLDER (SIDE LOCK ARBOR)
- SHELL MILL ARBOR
- COMBI-SHELL MILL ARBOR
- POWER MILLING CHUCK
- SK SLIM CHUCK
- TAPPING ER CHUCK
- FACE MILL ARBOR
- NC DRILL CHUCK

**HYDRAULIC CHUCK (RADIAL TOOL LENGTH PRE-SETTING TYPE)**

HYDRAULIK SPANNFUTTER (RADIALE WERKZEUGLÄGEN VOREINSTELLUNG)  
 MANDRIN HYDRAULIQUE (BANC DE PRÉ-RÉGLAGE RADIAL)  
 MANDRINI IDRAULICI (UTENSILI RADIALI PER AZZERAMENTO)  
 PORTAHERRAMIENTAS HIDRAULICO (AJUSTE DE LONGITUD TIPO PRE-SETTING)



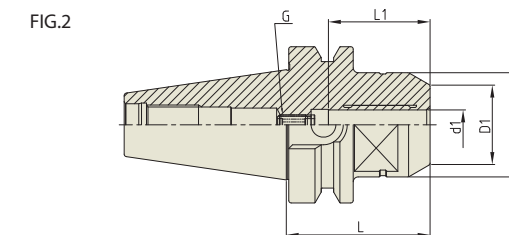
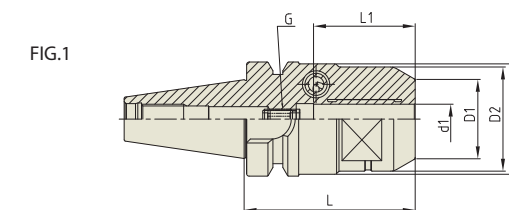
Unit : mm

TAPER No.	MODEL No.	EDP No.	d1	D1	D2	L	L1	L2	WEIGHT (Kg)
30	CBT30-HCR12-85	P2770551	12	32	44.5	85	40	37	0.90
	CBT30-HCR20-85	P2770552	20	44	44	85	-	42	1.00
40	CBT40-HCR12-90	P2770553	12	32	44.5	90	42.5	37	1.50
	CBT40-HCR20-90	P2770554	20	42	44.5	90	47.5	42	1.60
	CBT40-HCR32-105	P2770555	32	60	60	105	-	55	2.20
50	CBT50-HCR12-95	P2770556	12	32	44.5	95	34	37	3.90
	CBT50-HCR20-100	P2770557	20	42	44.5	100	44	42	4.00
	CBT50-HCR32-115	P2770558	32	60	60	115	-	55	4.10

- ▶ Inch type products are available.
- ▶ Balancing grade G2.5 at 25,000RPM or U max. < 1gmm.
- ▶ Supplied with clamping T-wrench.
- ▶ For applicable Hydraulic Chuck collet, please refer to page D291~D294.

**HYDRAULIC CHUCK (Power E Hydro)**

HYDRAULIK SPANNFUTTER (POWER E HYDRO)  
 MANDRIN HYDRAULIQUE (POWER E HYDRO)  
 MANDRINI IDRAULICI (POWER E HYDRO)  
 PORTAHERRAMIENTAS HIDRAULICO (POWER E HYDRO)



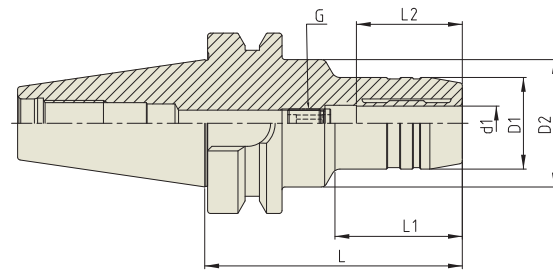
Unit : mm

TAPER No.	MODEL No.	EDP No.	d1	D1	D2	D3	L	L1	G	FIG.	WEIGHT (Kg)
30	CBT30-HC12P-69	P2776606P	12	32	42	44.5	69	41	M8x1.0	1	0.80
	CBT30-HC20P-90	P2776607P	20	38	42	44.5	90	48	M8x1.0	1	0.90
40	CBT40-HC12P-58	P2776608P	12	32	42	-	58	41	M8x1.0	2	1.10
	CBT40-HC20P-72.5	P2776609P	20	38	49.25	-	72.5	48	M8x1.0	2	1.40

- ▶ Inch type products are available.
- ▶ Balancing grade G2.5 at 25,000RPM or U max. < 1gmm.
- ▶ Supplied with clamping T-wrench.
- ▶ For applicable Hydraulic Chuck collet, please refer to page D291~D294.

**HYDRAULIC CHUCK (STANDARD)**

HYDRAULIK SPANNFUTTER (STANDARD)  
 MANDRIN HYDRAULIQUE (STANDARD)  
 MANDRINI IDRAULICI (STANDARD)  
 PORTAHERRAMIENTAS HIDRAULICO (ESTÁNDAR)



Unit : mm

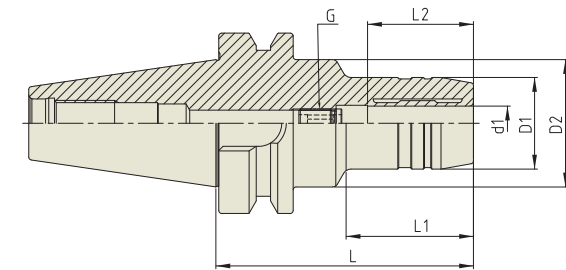
TAPER No.	MODEL No.	EDP No.	d1	D1	D2	L	L1	L2	G	WEIGHT (Kg)
30	CBT30-HC6-70	P2770503	6	26	44.5	70	29.5	27	M5x0.8	0.65
	CBT30-HC8-70	P2770504	8	28	44.5	70	30	27	M6x1.0	0.65
	CBT30-HC10-75	P2770505	10	30	44.5	75	31	32	M8x1.0	0.73
	CBT30-HC12-85	P2770506	12	32	45	85	45	37	M10x1.0	0.80
	CBT30-HC14-85	P2770507	14	34	45	85	45	37	M10x1.0	0.80
	CBT30-HC16-90	P2770508	16	38	45	90	50	42	M10x1.0	0.90
	CBT30-HC18-90	P2770509	18	40	45	90	50	42	M10x1.0	0.90
	CBT30-HC20-90	P2770510	20	42	45	90	50	42	M6x1.0	0.90
	40	CBT40-HC6-90	P2770511	6	26	44.5	90	43	27	M5x0.8
CBT40-HC8-90		P2770512	8	28	44.5	90	44.5	27	M6x1.0	1.30
CBT40-HC10-90		P2770513	10	30	44.5	90	44.5	32	M8x1.0	1.35
CBT40-HC12-90		P2770501	12	32	44.5	90	44.5	37	M10x1.0	1.35
CBT40-HC14-90		P2770514	14	34	44.5	90	44.5	37	M10x1.0	1.35
CBT40-HC16-90		P2770515	16	38	44.5	90	47.5	42	M12x1.0	1.40
CBT40-HC18-90		P2770516	18	40	44.5	90	47.5	42	M12x1.0	1.45
CBT40-HC20-90		P2770502	20	42	44.5	90	47.5	42	M16x1.0	1.50
CBT40-HC25-100		P2770517	25	50	60	100	47.5	48	M16x1.0	1.70
CBT40-HC32-105		P2770518	32	60	60	105	-	55	M16x1.0	2.10

- ▶ Inch type products are available.
- ▶ Balancing grade G2.5 at 25,000RPM or U max. < 1gmm.
- ▶ Supplied with clamping T-wrench.
- ▶ For applicable Hydraulic Chuck collet, please refer to page D291~D294.

▶ NEXT PAGE

**HYDRAULIC CHUCK (STANDARD)**

HYDRAULIK SPANNFUTTER (STANDARD)  
 MANDRIN HYDRAULIQUE (STANDARD)  
 MANDRINI IDRAULICI (STANDARD)  
 PORTAHERRAMIENTAS HIDRAULICO (ESTÁNDAR)



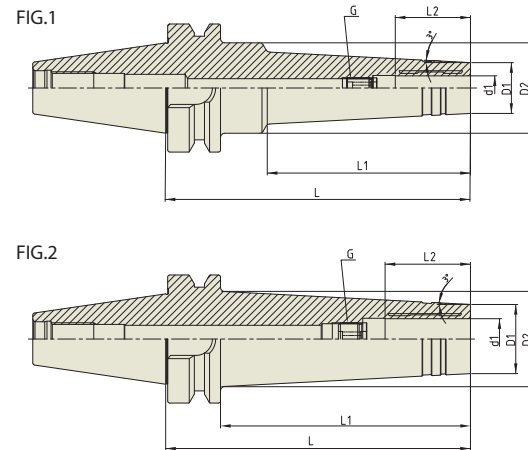
Unit : mm

TAPER No.	MODEL No.	EDP No.	d1	D1	D2	L	L1	L2	G	WEIGHT (Kg)
50	CBT50-HC6-90	P2770519	6	26	44.5	90	34	27	M5x0.8	3.75
	CBT50-HC6-120	P2770520	6	26	44.5	120	34	27	M5x0.8	4.10
	CBT50-HC6-150	P2770521	6	26	44.5	150	34	27	M5x0.8	4.70
	CBT50-HC8-90	P2770522	8	28	44.5	90	34	27	M6x1.0	3.75
	CBT50-HC8-120	P2770523	8	28	44.5	120	34	27	M6x1.0	4.10
	CBT50-HC8-150	P2770524	8	28	44.5	150	34	27	M6x1.0	4.10
	CBT50-HC10-90	P2770525	10	30	44.5	90	34	32	M8x1.0	3.90
	CBT50-HC10-120	P2770526	10	30	44.5	120	34	32	M8x1.0	4.30
	CBT50-HC10-150	P2770527	10	30	44.5	150	34	32	M8x1.0	4.90
	CBT50-HC12-90	P2770528	12	32	44.5	90	34	37	M10x1.0	3.90
	CBT50-HC12-120	P2770529	12	32	44.5	120	34	37	M10x1.0	4.30
	CBT50-HC12-150	P2770530	12	32	44.5	150	34	37	M10x1.0	4.90
	CBT50-HC14-90	P2770531	14	34	44.5	90	34	37	M10x1.0	3.90
	CBT50-HC14-120	P2770532	14	34	44.5	120	34	37	M10x1.0	4.30
	CBT50-HC14-150	P2770533	14	34	44.5	150	34	37	M10x1.0	4.90
	CBT50-HC16-90	P2770534	16	38	44.5	90	34	42	M12x1.0	4.00
	CBT50-HC16-120	P2770535	16	38	44.5	120	34	42	M12x1.0	4.40
	CBT50-HC16-150	P2770536	16	38	44.5	150	34	42	M12x1.0	5.00
	CBT50-HC18-90	P2770537	18	40	44.5	90	34	42	M12x1.0	4.00
	CBT50-HC18-120	P2770538	18	40	44.5	120	34	42	M12x1.0	4.40
	CBT50-HC18-150	P2770539	18	40	44.5	150	34	42	M12x1.0	5.00
	CBT50-HC20-90	P2770540	20	42	44.5	90	34	42	M16x1.0	4.00
	CBT50-HC20-120	P2770541	20	42	44.5	120	34	42	M16x1.0	4.40
	CBT50-HC20-150	P2770542	20	42	44.5	150	34	42	M16x1.0	5.00
	CBT50-HC25-105	P2770543	25	57	63	105	52	48	M16x1.0	4.40
	CBT50-HC25-150	P2770544	25	57	63	150	97	48	M16x1.0	5.60
	CBT50-HC32-115	P2770545	32	64	75	115	62	55	M16x1.0	4.70
	CBT50-HC32-150	P2770546	32	64	75	150	97	55	M16x1.0	6.00

- ▶ Inch type products are available.
- ▶ Balancing grade G2.5 at 25,000RPM or U max. < 1gmm.
- ▶ Supplied with clamping T-wrench.
- ▶ For applicable Hydraulic Chuck collet, please refer to page D291~D294.

**HYDRAULIC CHUCK (SLIM)**

HYDRAULIK SPANNFUTTER FÜR DEN FORMENBAU  
 MANDRIN HYDRAULIQUE POUR MOULISTE  
 MANDRINI IDRAULICI PER STAMPAGGIO  
 PORTAHERRAMIENTAS HIDRAULICO PARA MOLDES



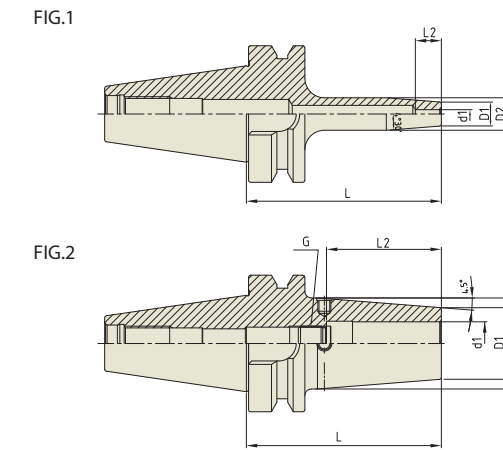
Unit : mm

TAPER No.	MODEL No.	EDP No.	d1	D1	D2	L	L1	L2	G	FIG.	WEIGHT (Kg)
40	CBT40-HMC6-120	P2770921	6	20	44.5	120	70	27	M5×0.8	1	1.40
	CBT40-HMC6-150	P2770922	6	20	44.5	150	100	27	M5×0.8	1	1.65
	CBT40-HMC8-120	P2770923	8	22	44.5	120	70	27	M6×1.0	1	1.40
	CBT40-HMC8-150	P2770924	8	22	44.5	150	100	27	M6×1.0	1	1.65
	CBT40-HMC10-120	P2770925	10	24	44.5	120	70	32	M8×1.0	1	1.40
	CBT40-HMC10-150	P2770926	10	24	44.5	150	100	32	M8×1.0	1	1.65
	CBT40-HMC12-120	P2770927	12	25	44.5	120	70	37	M10×1.0	1	1.40
	CBT40-HMC12-150	P2770928	12	25	44.5	150	100	37	M10×1.0	1	1.65
	CBT40-HMC14-120	P2770939	14	27	44.5	120	70	37	M10×1.0	1	1.50
	CBT40-HMC14-150	P2770940	14	27	44.5	150	100	37	M10×1.0	1	1.65
	CBT40-HMC16-120	P2770929	16	32	44.5	120	70	42	M12×1.0	1	1.45
	CBT40-HMC16-150	P2770930	16	32	44.5	150	100	42	M12×1.0	1	1.70
	CBT40-HMC20-120	P2770931	20	34	43.8	120	93	42	M16×1.0	2	1.50
	CBT40-HMC20-150	P2770932	20	34	46.9	150	123	42	M16×1.0	2	1.80
50	CBT50-HMC6-150	P2770933	6	20	50	150	90	27	M5×0.8	1	4.70
	CBT50-HMC8-150	P2770934	8	22	50	150	90	27	M6×1.0	1	4.70
	CBT50-HMC10-150	P2770935	10	24	50	150	90	32	M8×1.0	1	4.70
	CBT50-HMC12-150	P2770936	12	25	50	150	90	37	M10×1.0	1	4.70
	CBT50-HMC14-150	P2770941	14	27	50	150	100	37	M10×1.0	1	4.80
	CBT50-HMC16-150	P2770937	16	32	50	150	90	42	M12×1.0	1	4.90
CBT50-HMC20-150	P2770938	20	34	50	150	90	42	M16×1.0	1	5.00	

- ▶ Inch type products are available.
- ▶ Balancing grade G2.5 at 25,000RPM or U max. < 1gmm.
- ▶ For applicable Hydraulic Chuck collet, please refer to page D291~D294.

**SHRINK FIT HOLDER**

SCHRUMPFUTTER  
 MANDRIN DE FRETAGE  
 MADRINI PER CALLETAMENTO A CALDO  
 PORTAHERRAMIENTAS DE COMPRESION POR CALOR



Unit : mm

TAPER No.	MODEL No.	EDP No.	d1	D1	D2	L	L2	G	FIG.	WEIGHT (Kg)
30	CBT30-SFH3-60	P2771505	3	11	15	60	10	-	1	0.40
	CBT30-SFH4-60	P2771506	4	11	15	60	12	-	1	0.40
	CBT30-SFH5-60	P2771507	5	11	15	60	15	-	1	0.40
	CBT30-SFH6-60	P2771508	6	21	27	60	36	M5×0.8	2	0.40
	CBT30-SFH8-60	P2771509	8	21	27	60	36	M6×1.0	2	0.40
	CBT30-SFH10-80	P2771510	10	24	32	80	41	M8×1.0	2	0.40
	CBT30-SFH12-80	P2771511	12	24	32	80	48	M10×1.0	2	0.42
	CBT30-SFH14-80	P2771512	14	27	34	80	48	M10×1.0	2	0.42
	CBT30-SFH16-80	P2771513	16	27	34	80	51	M12×1.0	2	0.42
	CBT30-SFH18-80	P2771514	18	27	34	80	51	M12×1.0	2	0.42
	CBT30-SFH20-90	P2771515	20	33	42	90	53	M16×1.0	2	0.44
	CBT40-SFH3-90	P2771516	3	11	15	90	10	-	1	1.00
	CBT40-SFH4-90	P2771517	4	11	15	90	12	-	1	1.00
	CBT40-SFH5-90	P2771518	5	11	15	90	23	-	1	1.00
40	CBT40-SFH6-90	P2771519	6	21	27	90	36	M5×0.8	2	1.10
	CBT40-SFH6-130	P2771564	6	21	27	130	36	M5×0.8	2	-
	CBT40-SFH6-160	P2771520	6	21	27	160	36	M5×0.8	2	1.15
	CBT40-SFH8-90	P2771501	8	21	27	90	36	M6×1.0	2	1.11
	CBT40-SFH8-130	P2771565	8	21	27	130	36	M6×1.0	2	-
	CBT40-SFH8-160	P2771521	8	21	27	160	36	M6×1.0	2	1.15
	CBT40-SFH10-90	P2771502	10	24	32	90	41	M8×1.0	2	1.10
	CBT40-SFH10-130	P2771566	10	24	32	130	41	M8×1.0	2	-
	CBT40-SFH10-160	P2771522	10	24	32	160	41	M8×1.0	2	1.15
	CBT40-SFH12-90	P2771503	12	24	32	90	47	M10×1.0	2	1.10
	CBT40-SFH12-130	P2771567	12	24	32	130	47	M10×1.0	2	-
	CBT40-SFH12-160	P2771523	12	24	32	160	47	M10×1.0	2	1.15
	CBT40-SFH14-90	P2771524	14	27	34	90	47	M10×1.0	2	1.20
	CBT40-SFH14-130	P2771568	14	27	34	130	47	M10×1.0	2	-
CBT40-SFH14-160	P2771525	14	27	34	160	47	M10×1.0	2	1.50	

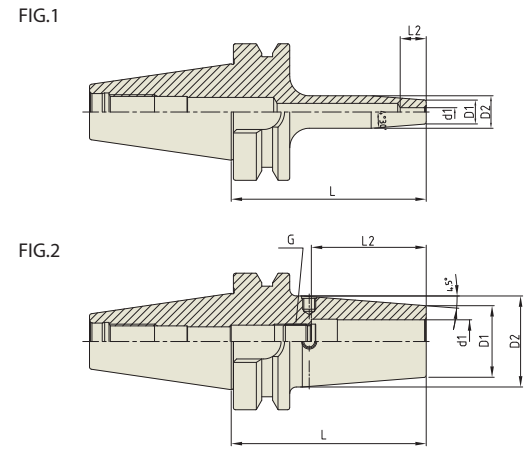
- ▶ Inch type products are available.
- ▶ Supplied without balancing screws.
- ▶ Balancing grade G2.5 at 25,000RPM or U max. < 1gmm.

▶ NEXT PAGE



**SHRINK FIT HOLDER**

SCHRUMPFUTTER  
MANDRIN DE FRETAGE  
MADRINI PER CALLETAMENTO A CALDO  
PORTAHERRAMIENTAS DE COMPRESION POR CALOR



Unit : mm

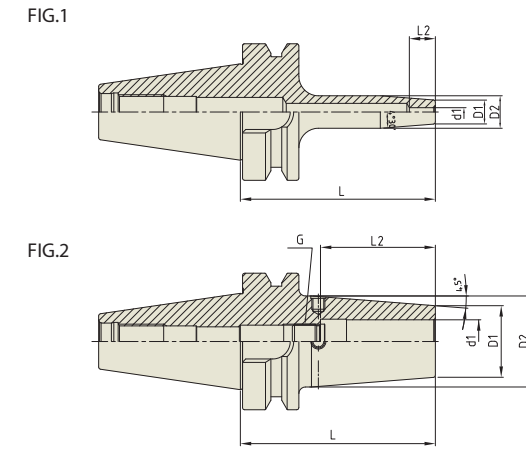
TAPER No.	MODEL No.	EDP No.	d1	D1	D2	L	L2	G	FIG.	WEIGHT (Kg)
40	CBT40-SFH16-90	P2771526	16	27	34	90	50	M12×1.0	2	1.20
	CBT40-SFH16-130	P2771569	16	27	34	130	50	M12×1.0	2	-
	CBT40-SFH16-160	P2771527	16	27	34	160	50	M12×1.0	2	1.50
	CBT40-SFH18-90	P2771528	18	33	42	90	50	M12×1.0	2	1.30
	CBT40-SFH18-130	P2771570	18	33	42	130	50	M12×1.0	2	-
	CBT40-SFH18-160	P2771529	18	33	42	160	50	M12×1.0	2	1.60
	CBT40-SFH20-90	P2771504	20	33	42	90	52	M16×1.0	2	1.40
	CBT40-SFH20-130	P2771571	20	33	42	130	52	M16×1.0	2	-
	CBT40-SFH20-160	P2771530	20	33	42	160	52	M16×1.0	2	1.70
	CBT40-SFH25-100	P2771531	25	44	53	100	58	M16×1.0	2	1.70
	CBT40-SFH25-130	P2771572	25	44	53	130	58	M16×1.0	2	-
	CBT40-SFH25-160	P2771532	25	44	53	160	58	M16×1.0	2	2.00
50	CBT50-SFH3-100	P2771533	3	11	15	100	10	-	1	1.50
	CBT50-SFH4-100	P2771534	4	11	15	100	12	-	1	1.50
	CBT50-SFH5-100	P2771535	5	11	15	100	15	-	1	1.50
	CBT50-SFH6-100	P2771536	6	21	27	100	36	M5×0.8	2	1.50
	CBT50-SFH6-130	P2771573	6	21	27	130	36	M5×0.8	2	-
	CBT50-SFH6-160	P2771537	6	21	27	160	36	M5×0.8	2	2.00
	CBT50-SFH6-200	P2771574	6	21	27	200	36	M5×0.8	2	-
	CBT50-SFH8-100	P2771538	8	21	27	100	36	M6×1.0	2	1.50
	CBT50-SFH8-130	P2771575	8	21	27	130	36	M6×1.0	2	-
	CBT50-SFH8-160	P2771539	8	21	27	160	36	M6×1.0	2	2.00
	CBT50-SFH8-200	P2771576	8	21	27	200	36	M6×1.0	2	-
	CBT50-SFH10-100	P2771540	10	24	32	100	42	M8×1.0	2	1.50
	CBT50-SFH10-130	P2771577	10	24	32	130	42	M8×1.0	2	-
	CBT50-SFH10-160	P2771541	10	24	32	160	42	M8×1.0	2	2.00
	CBT50-SFH10-200	P2771578	10	24	32	200	42	M8×1.0	2	-

- ▶ Inch type products are available.
- ▶ Supplied without balancing screws.
- ▶ Balancing grade G2.5 at 25,000RPM or U max. < 1gmm.

▶ NEXT PAGE

**SHRINK FIT HOLDER**

SCHRUMPFUTTER  
MANDRIN DE FRETAGE  
MADRINI PER CALLETAMENTO A CALDO  
PORTAHERRAMIENTAS DE COMPRESION POR CALOR



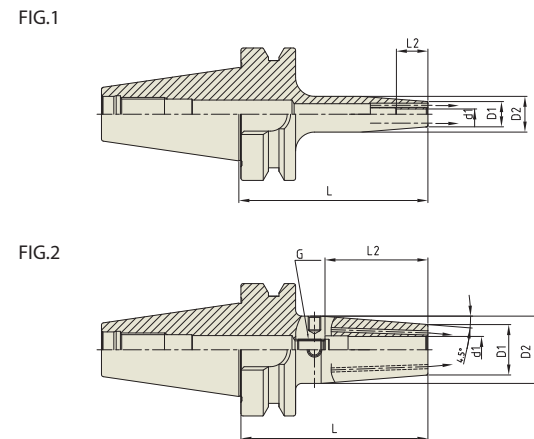
Unit : mm

TAPER No.	MODEL No.	EDP No.	d1	D1	D2	L	L2	G	FIG.	WEIGHT (Kg)
50	CBT50-SFH12-100	P2771542	12	24	32	100	47	M10×1.0	2	1.50
	CBT50-SFH12-130	P2771579	12	24	32	130	47	M10×1.0	2	-
	CBT50-SFH12-160	P2771543	12	24	32	160	47	M10×1.0	2	2.00
	CBT50-SFH12-200	P2771580	12	24	32	200	47	M10×1.0	2	-
	CBT50-SFH14-100	P2771544	14	27	34	100	47	M10×1.0	2	1.60
	CBT50-SFH14-130	P2771581	14	27	34	130	47	M10×1.0	2	-
	CBT50-SFH14-160	P2771545	14	27	34	160	47	M10×1.0	2	2.10
	CBT50-SFH14-200	P2771582	14	27	34	200	47	M10×1.0	2	-
	CBT50-SFH16-100	P2771546	16	27	34	100	50	M12×1.0	2	1.60
	CBT50-SFH16-130	P2771583	16	27	34	130	50	M12×1.0	2	-
	CBT50-SFH16-160	P2771547	16	27	34	160	50	M12×1.0	2	2.10
	CBT50-SFH16-200	P2771584	16	27	34	200	50	M12×1.0	2	-
	CBT50-SFH18-100	P2771548	18	33	42	100	50	M12×1.0	2	1.60
	CBT50-SFH18-130	P2771585	18	33	42	130	50	M12×1.0	2	-
	CBT50-SFH18-160	P2771549	18	33	42	160	50	M12×1.0	2	2.00
	CBT50-SFH18-200	P2771586	18	33	42	200	50	M12×1.0	2	-
	CBT50-SFH20-100	P2771550	20	33	42	100	52	M16×1.0	2	1.80
	CBT50-SFH20-130	P2771587	20	33	42	130	52	M16×1.0	2	-
	CBT50-SFH20-160	P2771551	20	33	42	160	52	M16×1.0	2	2.20
	CBT50-SFH20-200	P2771588	20	33	42	200	52	M16×1.0	2	-
	CBT50-SFH25-100	P2771552	25	44	53	100	58	M16×1.0	2	2.00
	CBT50-SFH25-130	P2771589	25	44	53	130	58	M16×1.0	2	-
	CBT50-SFH25-160	P2771553	25	44	53	160	58	M16×1.0	2	2.40
	CBT50-SFH25-200	P2771590	25	44	53	200	58	M16×1.0	2	-

- ▶ Inch type products are available.
- ▶ Supplied without balancing screws.
- ▶ Balancing grade G2.5 at 25,000RPM or U max. < 1gmm.

**SHRINK FIT HOLDER (COOLANT CHANNEL)**

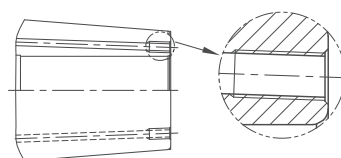
SCHRUMPFUTTER  
MANDRIN DE FRETAGE  
MADRINI PER CALLETAMENTO A CALDO  
PORTAHERRAMIENTAS DE COMPRESION POR CALOR



Unit : mm

TAPER No.	MODEL No.	EDP No.	d1	D1	D2	L	L2	G	FIG.	WEIGHT (Kg)
40	CBT40-SFH3C-90*1	P2862160C	3	12	17	90	10	-	1	-
	CBT40-SFH4C-90*1	P2862161C	4	12	17	90	12	-	1	-
	CBT40-SFH5C-90*1	P2862162C	5	12	17	90	15	-	1	-
	CBT40-SFH6C-90	P2862049C	6	21	27	90	36	M5x0.8	2	1.10
	CBT40-SFH6C-130	P2862184C	6	21	27	130	36	M5x0.8	2	-
	CBT40-SFH6C-160	P2862050C	6	21	27	160	36	M5x0.8	2	1.15
	CBT40-SFH8C-90	P2862051C	8	21	27	90	36	M6x1.0	2	1.11
	CBT40-SFH8C-130	P2862185C	8	21	27	130	36	M6x1.0	2	-
	CBT40-SFH8C-160	P2862052C	8	21	27	160	36	M6x1.0	2	1.15
	CBT40-SFH10C-90	P2862053C	10	24	32	90	41	M8x1.0	2	1.10
	CBT40-SFH10C-130	P2862186C	10	24	32	130	41	M8x1.0	2	-
	CBT40-SFH10C-160	P2862054C	10	24	32	160	41	M8x1.0	2	1.15
	CBT40-SFH12C-90	P2862055C	12	24	32	90	47	M10x1.0	2	1.10
	CBT40-SFH12C-130	P2862187C	12	24	32	130	47	M10x1.0	2	-
	CBT40-SFH12C-160	P2862056C	12	24	32	160	47	M10x1.0	2	1.15
	CBT40-SFH14C-90	P2862057C	14	27	34	90	47	M10x1.0	2	1.20
	CBT40-SFH14C-130	P2862188C	14	27	34	130	47	M10x1.0	2	-
	CBT40-SFH14C-160	P2862058C	14	27	34	160	47	M10x1.0	2	1.50
	CBT40-SFH16C-90	P2862059C	16	27	34	90	50	M12x1.0	2	1.20
	CBT40-SFH16C-130	P2862189C	16	27	34	130	50	M12x1.0	2	-
CBT40-SFH16C-160	P2862060C	16	27	34	160	50	M12x1.0	2	1.50	
CBT40-SFH18C-90	P2862061C	18	33	42	90	50	M12x1.0	2	1.30	
CBT40-SFH18C-130	P2862190C	18	33	42	130	50	M12x1.0	2	-	
CBT40-SFH18C-160	P2862062C	18	33	42	160	50	M12x1.0	2	1.60	

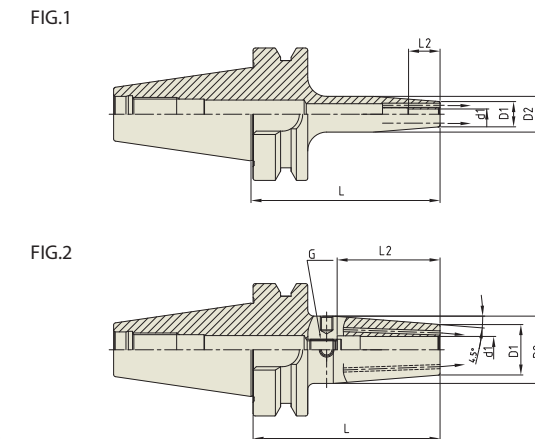
- ▶ Inch type products are available.
- ▶ Supplied without balancing screws.
- ▶ Balancing grade G2.5 at 25,000RPM or U max. < 1gmm.
- ▶ With two coolant channel bores.
- ▶ Resealable coolant channel type is available upon request. (Thread for plugging screw & 2 screws)
- ▶ \*1 Resealable type is not available.



▶ NEXT PAGE

**SHRINK FIT HOLDER (COOLANT CHANNEL)**

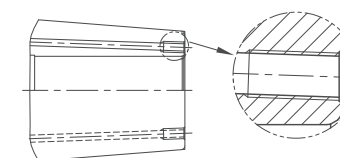
SCHRUMPFUTTER  
MANDRIN DE FRETAGE  
MADRINI PER CALLETAMENTO A CALDO  
PORTAHERRAMIENTAS DE COMPRESION POR CALOR



Unit : mm

TAPER No.	MODEL No.	EDP No.	d1	D1	D2	L	L2	G	FIG.	WEIGHT (Kg)
40	CBT40-SFH20C-90	P2862063C	20	33	42	90	52	M16x1.0	2	1.40
	CBT40-SFH20C-130	P2862191C	20	33	42	130	52	M16x1.0	2	-
	CBT40-SFH20C-160	P2862064C	20	33	42	160	52	M16x1.0	2	1.70
	CBT40-SFH25C-100	P2862065C	25	44	53	100	58	M16x1.0	2	1.70
	CBT40-SFH25C-130	P2862192C	25	44	53	130	58	M16x1.0	2	-
	CBT40-SFH25C-160	P2862066C	25	44	53	160	58	M16x1.0	2	2.00
	CBT50-SFH3C-100*1	P2862172C	3	12	17	100	10	-	1	-
	CBT50-SFH4C-100*1	P2862173C	4	12	17	100	12	-	1	-
	CBT50-SFH5C-100*1	P2862174C	5	12	17	100	15	-	1	-
	CBT50-SFH6C-100	P2862067C	6	21	27	100	36	M5x0.8	2	1.50
50	CBT50-SFH6C-130	P2862193C	6	21	27	130	36	M5x0.8	2	-
	CBT50-SFH6C-160	P2862068C	6	21	27	160	36	M5x0.8	2	2.00
	CBT50-SFH6C-200	P2862194C	6	21	27	200	36	M5x0.8	2	-
	CBT50-SFH8C-100	P2862069C	8	21	27	100	36	M6x1.0	2	1.50
	CBT50-SFH8C-130	P2862195C	8	21	27	130	36	M6x1.0	2	-
	CBT50-SFH8C-160	P2862070C	8	21	27	160	36	M6x1.0	2	2.00
	CBT50-SFH8C-200	P2862196C	8	21	27	200	36	M6x1.0	2	-
	CBT50-SFH10C-100	P2862071C	10	24	32	100	42	M8x1.0	2	1.10
	CBT50-SFH10C-130	P2862197C	10	24	32	130	42	M8x1.0	2	-
	CBT50-SFH10C-160	P2862072C	10	24	32	160	42	M8x1.0	2	1.15
CBT50-SFH10C-200	P2862198C	10	24	32	200	42	M8x1.0	2	-	
CBT50-SFH12C-100	P2862073C	12	24	32	100	47	M10x1.0	2	1.60	
CBT50-SFH12C-130	P2862199C	12	24	32	130	47	M10x1.0	2	-	
CBT50-SFH12C-160	P2862074C	12	24	32	160	47	M10x1.0	2	2.10	

- ▶ Inch type products are available.
- ▶ Supplied without balancing screws.
- ▶ Balancing grade G2.5 at 25,000RPM or U max. < 1gmm.
- ▶ With two coolant channel bores.
- ▶ Resealable coolant channel type is available upon request. (Thread for plugging screw & 2 screws)
- ▶ \*1 Resealable type is not available.



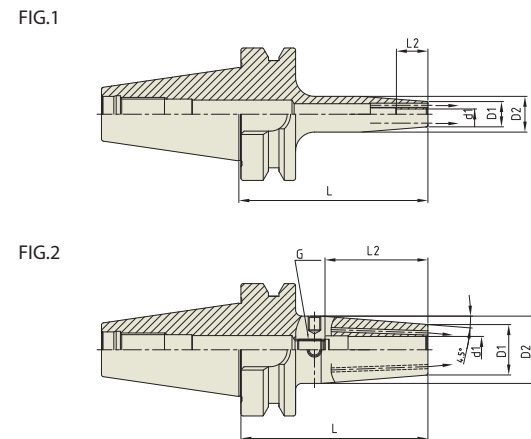
▶ NEXT PAGE

# SHRINK FIT HOLDER

SFH

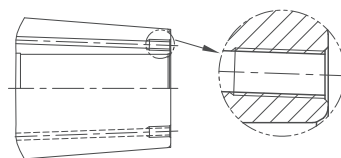
## SHRINK FIT HOLDER (COOLANT CHANNEL)

SCHRUMPFUTTER  
MANDRIN DE FRETTAGE  
MADRINI PER CALLETAMENTO A CALDO  
PORTAHERRAMIENTAS DE COMPRESION POR CALOR



Unit : mm										
TAPER No.	MODEL No.	EDP No.	d1	D1	D2	L	L2	G	FIG.	WEIGHT (Kg)
50	CBT50-SFH12C-200	P2862200C	12	24	32	200	47	M10x1.0	2	-
	CBT50-SFH14C-100	P2862075C	14	27	34	100	47	M10x1.0	2	1.60
	CBT50-SFH14C-130	P2862201C	14	27	34	130	47	M10x1.0	2	-
	CBT50-SFH14C-160	P2862076C	14	27	34	160	47	M10x1.0	2	2.10
	CBT50-SFH14C-200	P2862202C	14	27	34	200	47	M10x1.0	2	-
	CBT50-SFH16C-100	P2862077C	16	27	34	100	50	M12x1.0	2	1.60
	CBT50-SFH16C-130	P2862203C	16	27	34	130	50	M12x1.0	2	-
	CBT50-SFH16C-160	P2862078C	16	27	34	160	50	M12x1.0	2	2.10
	CBT50-SFH16C-200	P2862204C	16	27	34	200	50	M12x1.0	2	-
	CBT50-SFH18C-100	P2862079C	18	33	42	100	50	M12x1.0	2	1.60
	CBT50-SFH18C-130	P2862205C	18	33	42	130	50	M12x1.0	2	-
	CBT50-SFH18C-160	P2862080C	18	33	42	160	50	M12x1.0	2	2.00
CBT50-SFH18C-200	P2862206C	18	33	42	200	50	M12x1.0	2	-	
CBT50-SFH20C-100	P2862081C	20	33	42	100	52	M16x1.0	2	1.80	
CBT50-SFH20C-130	P2862207C	20	33	42	130	52	M16x1.0	2	-	
CBT50-SFH20C-160	P2862082C	20	33	42	160	52	M16x1.0	2	2.20	
CBT50-SFH20C-200	P2862208C	20	33	42	200	52	M16x1.0	2	-	
CBT50-SFH25C-100	P2862083C	25	44	53	100	58	M16x1.0	2	2.00	
CBT50-SFH25C-130	P2862209C	25	44	53	130	58	M16x1.0	2	-	
CBT50-SFH25C-160	P2862084C	25	44	53	160	58	M16x1.0	2	2.40	
CBT50-SFH25C-200	P2862210C	25	44	53	200	58	M16x1.0	2	-	

- ▶ Inch type products are available.
- ▶ Supplied without balancing screws.
- ▶ Balancing grade G2.5 at 25,000RPM or U max. < 1gmm.
- ▶ With two coolant channel bores.
- ▶ Resealable coolant channel type is available upon request. (Thread for plugging screw & 2 screws)

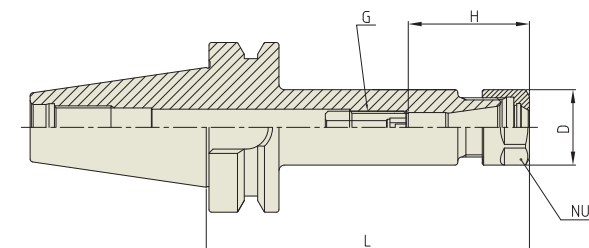


# ER COLLET CHUCK

ER

## ER COLLET CHUCK

SPANN FUTTER - ER  
MANDRIN À PINCES - ER  
MANDRINO PORTA PINZE - ER  
PORTAPINZAS - ER



Unit : mm										
TAPER No.	MODEL No.	EDP No.	CLAMPING RANGE	L	D	G	H	NUT / COLLET	WEIGHT (Kg)	
30	CBT30-ER11-70	P2776802	0.5 - 7.0	70	19	M6	45	ER11	0.50	
	CBT30-ER11-100	P2776803	0.5 - 7.0	100	19	M6	45	ER11	0.50	
	CBT30-ER16-70	P2776804	0.5 - 10.0	70	28	M10	45	ER16	1.00	
	CBT30-ER16-100	P2776805	0.5 - 10.0	100	28	M10	45	ER16	1.10	
	CBT30-ER20-80	P2776806	0.5 - 13.0	80	34	M12	50	ER20	1.20	
	CBT30-ER20-100	P2776807	0.5 - 13.0	100	34	M12	50	ER20	1.30	
	CBT30-ER25-70	P2776808	1.0 - 16.0	70	42	M12	65	ER25	1.20	
	CBT30-ER25-100	P2776809	1.0 - 16.0	100	42	M12	65	ER25	1.30	
	CBT30-ER32-60	P2776801	1.0 - 20.0	60	50	M12	65	ER32	1.40	
	CBT30-ER32-90	P2776810	1.0 - 20.0	90	50	M12	65	ER32	1.90	
	40	CBT40-ER11-75	P2772004	0.5 - 7.0	75	19	M6	45	ER11	1.00
		CBT40-ER11-100	P2772005	0.5 - 7.0	100	19	M6	45	ER11	1.10
CBT40-ER16-75		P2772006	0.5 - 10.0	75	28	M10	45	ER16	1.10	
CBT40-ER16-100		P2772001	0.5 - 10.0	100	28	M10	45	ER16	1.20	
CBT40-ER16-120		P2772007	0.5 - 10.0	120	28	M12	45	ER16	1.40	
CBT40-ER20-75		P2772008	0.5 - 13.0	75	34	M12	50	ER20	1.40	
CBT40-ER20-100		P2772009	0.5 - 13.0	100	34	M12	50	ER20	1.80	
CBT40-ER20-135		P2772010	0.5 - 13.0	135	34	M12	50	ER20	2.20	
CBT40-ER25-75		P2772011	1.0 - 16.0	75	42	M12	65	ER25	1.40	
CBT40-ER25-100		P2772002	1.0 - 16.0	100	42	M12	65	ER25	1.80	
CBT40-ER25-135		P2772012	1.0 - 16.0	135	42	M12	65	ER25	2.20	
CBT40-ER25-150		P2772013	1.0 - 16.0	150	42	M12	65	ER25	2.40	
CBT40-ER32-60		P2772014	1.0 - 20.0	60	50	M12	65	ER32	1.80	
CBT40-ER32-100		P2772003	1.0 - 20.0	100	50	M12	65	ER32	2.20	
CBT40-ER32-120		P2772015	1.0 - 20.0	120	50	M12	65	ER32	2.40	
CBT40-ER32-150		P2772016	1.0 - 20.0	150	50	M12	65	ER32	2.60	
CBT40-ER40-80		P2772017	2.0 - 30.0	80	63	M12	75	ER40	1.50	

- ▶ Balancing grade G2.5 at 25,000RPM or U max. < 1gmm.
- ▶ For applicable ER collet, please refer to page D296~D304.
- ▶ For applicable ER nut, Sealing disk and Spanner, please refer to page D305~D309.

▶ NEXT PAGE

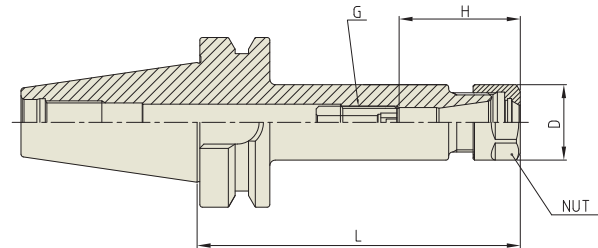


**YG ER COLLET CHUCK**

ER

**ER COLLET CHUCK**

SPANN FUTTER - ER  
MANDRIN À PINCES - ER  
MANDRINO PORTA PINZE - ER  
PORTAPINZAS - ER



Unit : mm									
TAPER No.	MODEL No.	EDP No.	CLAMPING RANGE	L	D	G	H	NUT / COLLET	WEIGHT (Kg)
50	CBT50-ER16-100	P2772018	0.5 - 10.0	100	28	M10	45	ER16	4.20
	CBT50-ER16-120	P2772019	0.5 - 10.0	120	28	M10	45	ER16	4.40
	CBT50-ER16-165	P2772020	0.5 - 10.0	165	28	M10	45	ER16	4.60
	CBT50-ER20-100	P2772021	0.5 - 13.0	100	34	M12	50	ER20	4.60
	CBT50-ER20-135	P2772022	0.5 - 13.0	135	34	M12	50	ER20	4.80
	CBT50-ER20-165	P2772023	0.5 - 13.0	165	34	M12	50	ER20	5.00
	CBT50-ER25-100	P2772024	1.0 - 16.0	100	42	M12	65	ER25	4.70
	CBT50-ER25-135	P2772025	1.0 - 16.0	135	42	M12	65	ER25	4.80
	CBT50-ER25-165	P2772026	1.0 - 16.0	165	42	M12	65	ER25	5.00
	CBT50-ER32-100	P2772027	1.0 - 20.0	100	50	M12	65	ER32	5.20
	CBT50-ER32-135	P2772028	1.0 - 20.0	135	50	M12	65	ER32	5.70
	CBT50-ER32-165	P2772029	1.0 - 20.0	165	50	M12	65	ER32	5.80
	CBT50-ER40-100	P2772030	2.0 - 30.0	100	63	M12	75	ER40	5.60
	CBT50-ER40-150	P2772031	2.0 - 30.0	150	63	M12	75	ER40	6.10
	CBT50-ER50-100	P2772032	4.0 - 34.0	100	78	M16	85	ER50	5.80
	CBT50-ER50-150	P2772033	4.0 - 34.0	150	78	M16	85	ER50	6.30

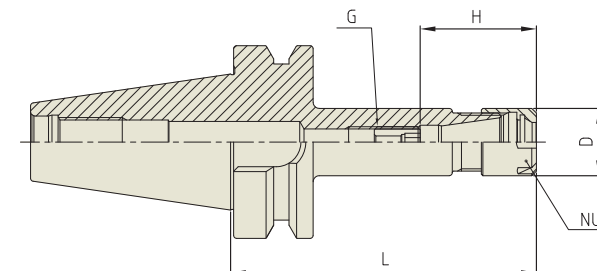
- ▶ Balancing grade G2.5 at 25,000RPM or U max. < 1gmm.
- ▶ For applicable ER collet, please refer to page D296~D304.
- ▶ For applicable ER nut, Sealing disk and Spanner, please refer to page D305~D309.

**YG ER COLLET CHUCK**

ER

**ER COLLET CHUCK (SLIM)**

SPANN FUTTER - ER  
MANDRIN À PINCES - ER  
MANDRINO PORTA PINZE - ER  
PORTAPINZAS - ER



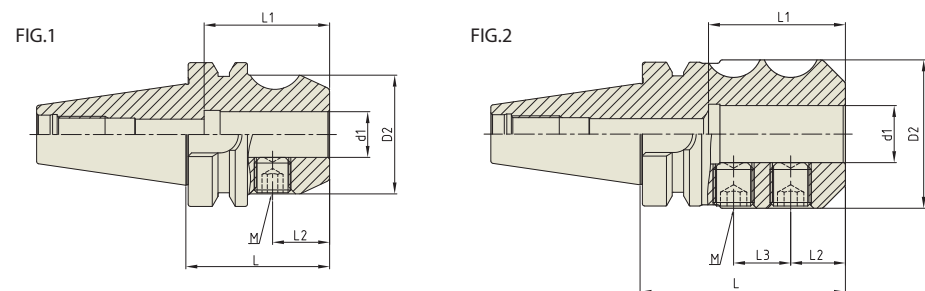
Unit : mm									
TAPER No.	MODEL No.	EDP No.	CLAMPING RANGE	L	D	G	H	NUT / COLLET	WEIGHT (Kg)
30	CBT30-ER11M-70	P2802682	0.5 - 7.0	70	16	M6	29.5	ER11M / ER11	-
	CBT30-ER11M-100	P2802683	0.5 - 7.0	100	16	M6	29.5	ER11M / ER11	-
	CBT30-ER16M-70	P2802684	0.5 - 10.0	70	22	M10	38	ER16M / ER16	-
	CBT30-ER16M-100	P2802685	0.5 - 10.0	100	22	M10	38	ER16M / ER16	-
	CBT30-ER20M-80	P2802686	0.5 - 13.0	80	28	M12	44.5	ER20M / ER20	-
	CBT30-ER20M-100	P2802687	0.5 - 13.0	100	28	M12	44.5	ER20M / ER20	-
	CBT30-ER25M-70	P2802688	1.0 - 16.0	70	35	M12	52	ER25M / ER25	-
	CBT30-ER25M-100	P2802689	1.0 - 16.0	100	35	M12	52	ER25M / ER25	-
40	CBT40-ER11M-75	P2802690	0.5 - 7.0	75	16	M6	29.5	ER11M / ER11	-
	CBT40-ER11M-100	P2802691	0.5 - 7.0	100	16	M6	29.5	ER11M / ER11	-
	CBT40-ER11M-130	P2802692	0.5 - 7.0	130	16	M6	29.5	ER11M / ER11	-
	CBT40-ER11M-160	P2802693	0.5 - 7.0	160	16	M6	29.5	ER11M / ER11	-
	CBT40-ER16M-75	P2802694	0.5 - 10.0	75	22	M10	38	ER16M / ER16	-
	CBT40-ER16M-100	P2802695	0.5 - 10.0	100	22	M10	38	ER16M / ER16	-
	CBT40-ER16M-130	P2802696	0.5 - 10.0	130	22	M10	38	ER16M / ER16	-
	CBT40-ER16M-160	P2802697	0.5 - 10.0	160	22	M10	38	ER16M / ER16	-
	CBT40-ER20M-75	P2802698	0.5 - 13.0	75	28	M12	44.5	ER20M / ER20	-
	CBT40-ER20M-100	P2802699	0.5 - 13.0	100	28	M12	44.5	ER20M / ER20	-
	CBT40-ER20M-130	P2802720	0.5 - 13.0	130	28	M12	44.5	ER20M / ER20	-
	CBT40-ER20M-160	P2802721	0.5 - 13.0	160	28	M12	44.5	ER20M / ER20	-
	CBT40-ER25M-75	P2802722	1.0 - 16.0	75	35	M12	52	ER25M / ER25	-
	CBT40-ER25M-100	P2802723	1.0 - 16.0	100	35	M12	52	ER25M / ER25	-
	CBT40-ER25M-130	P2802724	1.0 - 16.0	130	35	M12	52	ER25M / ER25	-
	CBT40-ER25M-160	P2802725	1.0 - 16.0	160	35	M12	52	ER25M / ER25	-
50	CBT50-ER16M-100	P2802726	0.5 - 10.0	100	22	M10	38	ER16M / ER16	-
	CBT50-ER16M-130	P2802727	0.5 - 10.0	130	22	M10	38	ER16M / ER16	-
	CBT50-ER16M-160	P2802728	0.5 - 10.0	160	22	M10	38	ER16M / ER16	-
	CBT50-ER20M-100	P2802729	0.5 - 13.0	100	28	M12	44.5	ER20M / ER20	-
	CBT50-ER20M-130	P2802730	0.5 - 13.0	130	28	M12	44.5	ER20M / ER20	-
	CBT50-ER20M-160	P2802731	0.5 - 13.0	160	28	M12	44.5	ER20M / ER20	-
	CBT50-ER25M-100	P2802732	1.0 - 16.0	100	35	M12	52	ER25M / ER25	-
	CBT50-ER25M-130	P2802733	1.0 - 16.0	130	35	M12	52	ER25M / ER25	-
CBT50-ER25M-160	P2802734	1.0 - 16.0	160	35	M12	52	ER25M / ER25	-	

- ▶ Balancing grade G2.5 at 25,000RPM or U max. < 1gmm.
- ▶ For applicable ER collet please refer to page D296~D304.
- ▶ For applicable ER nut, Sealing disk, please refer to page D305 & D309.



**END MILL HOLDER**

FRÄSERFUTTER UND FLÄCHENSPANNFUTTER  
 MANDRIN PORTE FRAISE À QUEUE CYLINDRIQUE, À MÉPLAT  
 MANDRINI PORTA FRESA TIPO WELDON  
 PORTAFRESAS Y EJES DE SUJECCION LATERAL



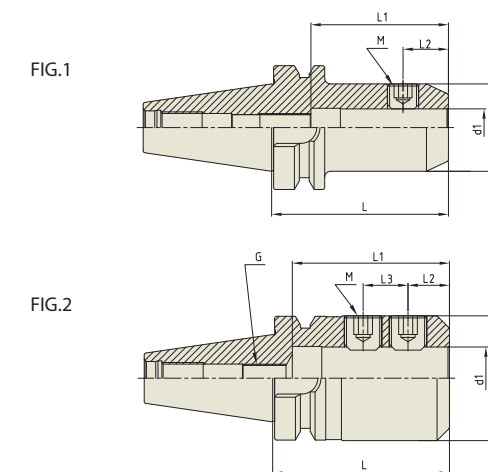
Unit : mm

TAPER No.	MODEL No.	EDP No.	d1	D2	L	L1	L2	L3	M	FIG.	WEIGHT (Kg)
30	CBT30-EMH6-50	P2786001	6	25	50	37	18	-	M6	1	-
	CBT30-EMH8-50	P2786002	8	28	50	37	18	-	M8	1	-
	CBT30-EMH10-50	P2786003	10	35	50	41	20	-	M10	1	-
	CBT30-EMH12-55	P2786004	12	42	55	46	22.5	-	M12	1	-
	CBT30-EMH16-63	P2786005	16	48	63	54	24	-	M14	1	-
	CBT30-EMH20-70	P2786006	20	52	70	53	25	-	M16	1	-
40	CBT40-EMH6-50	P2786007	6	25	50	35	18	-	M6	1	-
	CBT40-EMH6-100	P2786008	6	25	100	35	18	-	M6	1	-
	CBT40-EMH8-50	P2786009	8	28	50	35	18	-	M8	1	-
	CBT40-EMH8-100	P2786010	8	28	100	35	18	-	M8	1	-
	CBT40-EMH10-63	P2786011	10	35	63	36	20	-	M10	1	-
	CBT40-EMH10-100	P2786012	10	35	100	36	20	-	M10	1	-
	CBT40-EMH12-63	P2786013	12	42	63	36	22.5	-	M12	1	-
	CBT40-EMH12-100	P2786014	12	42	100	36	22.5	-	M12	1	-
	CBT40-EMH16-63	P2786015	16	48	63	54	24	-	M14	1	-
	CBT40-EMH16-100	P2786016	16	48	100	54	24	-	M14	1	-
	CBT40-EMH20-63	P2786017	20	52	63	55	25	-	M16	1	-
	CBT40-EMH20-100	P2786018	20	52	100	55	25	-	M16	1	-
50	CBT40-EMH25-90	P2786019	25	65	90	60	24	25	M18	2	-
	CBT50-EMH6-63	P2786020	6	25	63	35	18	-	M6	1	-
	CBT50-EMH8-63	P2786021	8	28	63	35	18	-	M8	1	-
	CBT50-EMH10-70	P2786022	10	35	70	36	20	-	M10	1	-
	CBT50-EMH12-80	P2786023	12	42	80	46	22.5	-	M12	1	-
	CBT50-EMH16-80	P2786024	16	48	80	49	24	-	M14	1	-
	CBT50-EMH20-80	P2786025	20	52	80	52	25	-	M16	1	-
	CBT50-EMH25-100	P2786026	25	65	100	60	24	25	M18	2	-

- ▶ Inch type products are available.
- ▶ Standard End Mill Holder is for a cutting tool with weldon shank and End Mill Holder for a cutting tool with Whistle notch is available upon request.
- ▶ Combi-style Holder with ball jointed clamping screw which can be used with cutting tools with Weldon and Whistle notch shank is available.
- ▶ Balancing grade G2.5 at 25,000RPM or U max. < 1gmm.

**SIDE LOCK ARBOR**

FRÄSERFUTTER UND FLÄCHENSPANNFUTTER  
 MANDRIN PORTE FRAISE À QUEUE CYLINDRIQUE, À MÉPLAT  
 MANDRINI PORTA FRESA TIPO WELDON  
 PORTAFRESAS Y EJES DE SUJECCION LATERAL



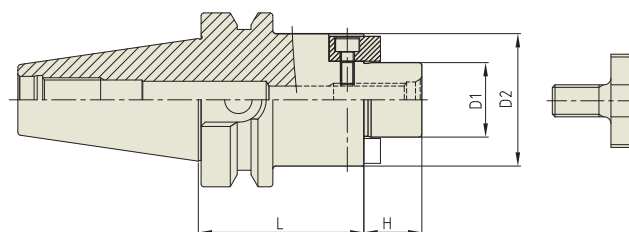
Unit : mm

TAPER No.	MODEL No.	EDP No.	d1	D2	L	L1	L2	L3	M	G	FIG.	WEIGHT (Kg)
30	CBT30-SLA6-60	P2772918	6	25	60	35	18	-	M5	M5	1	0.70
	CBT30-SLA8-60	P2772919	8	28	60	35	18	-	M6	M6	1	0.80
	CBT30-SLA10-60	P2772920	10	35	60	50	14	13	M8	M8	2	0.90
	CBT30-SLA12-60	P2772921	12	40	60	50	14	13	M10	M10	2	1.10
	CBT30-SLA14-60	P2772922	14	40	60	50	14	13	M10	M10	2	1.20
	CBT30-SLA16-75	P2772923	16	40	75	70	25	20	M12	M12	2	1.30
	CBT30-SLA20-75	P2772924	20	50	75	70	25	20	M12	M12	2	1.40
	CBT30-SLA25-75	P2772925	25	50	75	70	25	20	M14	M12	2	1.50
	CBT30-SLA32-105	P2772926	32	60	105	80	25	25	M16	M12	2	1.60
	CBT40-SLA6-60	P2772927	6	25	60	35	18	-	M5	M5	1	1.10
	CBT40-SLA8-60	P2772928	8	28	60	35	18	-	M6	M6	1	1.10
	CBT40-SLA10-60	P2772929	10	35	60	50	14	13	M8	M8	2	1.20
40	CBT40-SLA12-60	P2772930	12	40	60	50	14	13	M10	M10	2	1.40
	CBT40-SLA16-90	P2772931	16	40	90	70	25	20	M12	M10	2	1.50
	CBT40-SLA20-90	P2772901	20	50	90	70	25	20	M12	M12	2	1.80
	CBT40-SLA25-90	P2772902	25	50	90	70	25	20	M14	M12	2	1.70
	CBT40-SLA32-90	P2772903	32	60	90	80	25	25	M16	M12	2	1.90
	CBT40-SLA40-90	P2772904	40	63	90	80	25	25	M16	M12	2	1.80
	CBT40-SLA42-90	P2772905	42	63	90	80	25	25	M16	M12	2	1.80
	CBT50-SLA6-90	P2772906	6	25	90	40	18	-	M5	M5	1	3.70
	CBT50-SLA8-90	P2772907	8	28	90	40	18	-	M6	M6	1	3.90
	CBT50-SLA10-90	P2772908	10	35	90	50	15	15	M8	M8	2	4.10
	CBT50-SLA12-90	P2772909	12	40	90	55	15	15	M10	M10	2	4.30
	CBT50-SLA14-90	P2772910	14	40	90	55	15	15	M10	M10	2	4.30
50	CBT50-SLA16-105	P2772911	16	40	105	70	25	20	M12	M12	2	4.40
	CBT50-SLA20-105	P2772912	20	50	105	70	25	20	M12	M12	2	4.80
	CBT50-SLA25-105	P2772913	25	50	105	70	25	20	M14	M12	2	4.70
	CBT50-SLA32-105	P2772914	32	60	105	80	25	25	M16	M12	2	4.00
	CBT50-SLA40-105	P2772915	40	70	105	80	25	25	M16	M12	2	4.50
	CBT50-SLA42-105	P2772916	42	70	105	80	25	25	M16	M12	2	4.70
	CBT50-SLA50.8-121	P2772917	50.8	95	121	87	33.9	35.8	M20	-	2	5.00

- ▶ Inch type products are available.
- ▶ Standard design of Side Lock Arbor is for cutting tools with straight shank having flat face.
- ▶ Side Lock Arbor is Non-Balancing.

**SHELL MILL ARBOR**

AUFNAHMEDORN FÜR FRÄSER MIT BOHRUNG  
 MANDRIN PORTE-FRAISES  
 MANDRINO CON TRASCINAMENTO FISSO  
 PORTA FRESAS



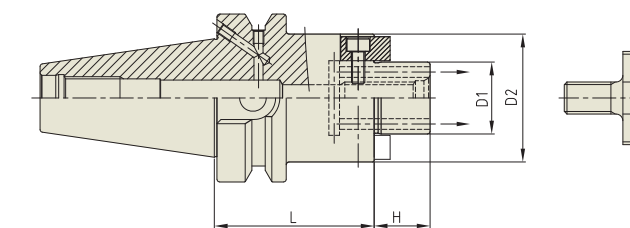
Unit : mm

TAPER No.	MODEL No.	EDP No.	D1	D2	L	H	BOLT	WEIGHT (Kg)
30	CBT30-SMA16-50	P2778701	16	32	50	17	M8x16L	0.58
	CBT30-SMA22-50	P2778702	22	40	50	19	M10x18L	0.70
	CBT30-SMA27-50	P2778703	27	48	50	21	M12x22L	0.85
40	CBT40-SMA16-60	P2778704	16	32	60	17	M8x16L	1.17
	CBT40-SMA16-120	P2778715	16	32	120	17	M8x16L	1.50
	CBT40-SMA22-60	P2778705	22	40	60	19	M10x18L	1.31
	CBT40-SMA22-120	P2778716	22	40	120	19	M10x18L	1.85
	CBT40-SMA27-60	P2778706	27	48	60	21	M12x22L	1.48
	CBT40-SMA27-120	P2778717	27	48	120	21	M12x22L	2.27
50	CBT40-SMA32-60	P2778707	32	58	60	24	M16x26L	1.72
	CBT40-SMA32-120	P2778718	32	58	120	24	M16x26L	2.90
	CBT40-SMA40-60	P2778708	40	70	60	27	M20x30L	2.00
	CBT50-SMA16-75	P2778709	16	32	75	17	M8x16L	3.75
	CBT50-SMA16-120	P2778719	16	32	120	17	M8x16L	4.03
	CBT50-SMA22-75	P2778710	22	40	75	19	M10x18L	3.90
	CBT50-SMA22-120	P2778720	22	40	120	19	M10x18L	4.25
	CBT50-SMA27-75	P2778711	27	48	75	21	M12x22L	4.09
	CBT50-SMA27-120	P2778721	27	48	120	21	M12x22L	4.56
	CBT50-SMA32-75	P2778712	32	58	75	24	M16x26L	4.35
CBT50-SMA32-120	P2778722	32	58	120	24	M16x26L	5.22	
CBT50-SMA40-75	P2778713	40	70	75	27	M20x30L	4.77	
CBT50-SMA40-120	P2778723	40	70	120	27	M20x30L	6.04	
CBT50-SMA50-75	P2778714	50	90	75	30	M24x36L	5.63	

- ▶ Inch type products are available.
- ▶ Balancing grade G2.5 at 25,000RPM or U max. < 1gmm.
- ▶ For parts, please refer to page D311.

**SHELL MILL ARBOR (COOLANT CHANNEL & SMALL FACE)**

AUFNAHMEDORN FÜR FRÄSER MIT BOHRUNG  
 MANDRIN PORTE-FRAISES  
 MANDRINO CON TRASCINAMENTO FISSO  
 PORTA FRESAS



Unit : mm

TAPER No.	MODEL No.	EDP No.	D1	D2	L	H	BOLT	WEIGHT (Kg)
40	CBT40AD/B-SMA16C-60	P2801047C	16	32	60	17	M8x16L	1.20
	CBT40AD/B-SMA16C-120	P2801058C	16	32	120	17	M8x16L	1.20
	CBT40AD/B-SMA22C-60	P2801048C	22	40	60	19	M10x18L	1.27
	CBT40AD/B-SMA22C-120	P2801059C	22	40	120	19	M10x18L	1.84
	CBT40AD/B-SMA27C-60	P2801049C	27	48	60	21	M12x22L	1.44
	CBT40AD/B-SMA27C-120	P2801060C	27	48	120	21	M12x22L	2.26
50	CBT50AD/B-SMA16C-60	P2803407C	16	32	60	17	M8x16L	3.00
	CBT50AD/B-SMA16C-120	P2801062C	16	32	120	17	M8x16L	3.30
	CBT50AD/B-SMA22C-75	P2801053C	22	40	75	19	M10x18L	3.83
	CBT50AD/B-SMA22C-120	P2801063C	22	40	120	19	M10x18L	4.24
	CBT50AD/B-SMA27C-75	P2801054C	27	48	75	21	M12x22L	4.03
	CBT50AD/B-SMA27C-120	P2801064C	27	48	120	21	M12x22L	4.64
	CBT50AD/B-SMA32C-75	P2801055C	32	58	75	24	M16x26L	4.31
	CBT50AD/B-SMA32C-120	P2801065C	32	58	120	24	M16x26L	5.19
	CBT50AD/B-SMA40C-75	P2801056C	40	70	75	27	M20x30L	4.75
	CBT50AD/B-SMA40C-120	P2801066C	40	70	120	27	M20x30L	6.02

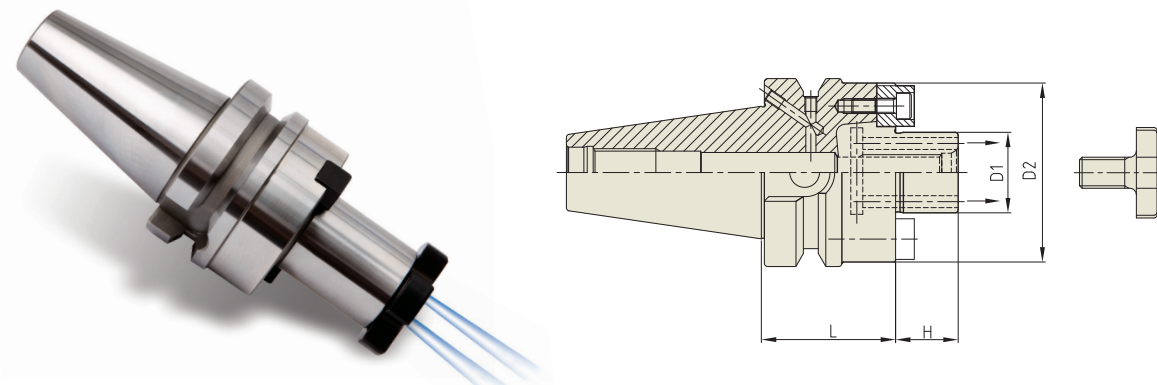
- ▶ Inch type products are available.
- ▶ With "Coolant Through" by coolant channels.
- ▶ Balancing grade G2.5 at 25,000RPM or U max. < 1gmm.
- ▶ For parts, please refer to page D311.

**YIG SHELL MILL ARBOR**

**SMA**

**SHELL MILL ARBOR (COOLANT CHANNEL & LARGE FACE)**

AUFNAHMEDORN FÜR FRÄSER MIT BOHRUNG  
MANDRIN PORTE-FRAISES  
MANDRINO CON TRASCINAMENTO FISSO  
PORTA FRESAS



Unit : mm

TAPER No.	MODEL No.	EDP No.	D1	D2	L	H	BOLT	WEIGHT (Kg)
30	CBT30-SMA16CE-40	P2803501CE	16	38	40	17	M8x16L	0.55
	CBT30-SMA22CE-40	P2803502CE	22	48	40	19	M10x18L	0.69
	CBT30-SMA27CE-40	P2803503CE	27	60	40	21	M12x22L	0.85
	CBT30-SMA32CE-45	P2803504CE	32	78	45	24	M16x26L	1.32
40	CBT40AD/B-SMA16CE-50	P2803505CE	16	38	50	17	M10x18L	1.14
	CBT40AD/B-SMA22CE-45	P2803506CE	22	48	45	19	M10x18L	1.22
	CBT40AD/B-SMA27CE-45	P2803507CE	27	60	45	21	M12x22L	1.39
	CBT40AD/B-SMA32CE-50	P2803508CE	32	78	50	24	M16x26L	1.80
	CBT40AD/B-SMA40CE-50	P2803509CE	40	89	50	27	M20x30L	2.05
50	CBT50AD/B-SMA22CE-55	P2803510CE	22	48	55	19	M10x18L	3.72
	CBT50AD/B-SMA27CE-55	P2803511CE	27	60	55	21	M12x22L	3.89
	CBT50AD/B-SMA32CE-55	P2803512CE	32	78	55	24	M16x26L	4.21
	CBT50AD/B-SMA40CE-55	P2803513CE	40	89	55	27	M20x30L	4.52

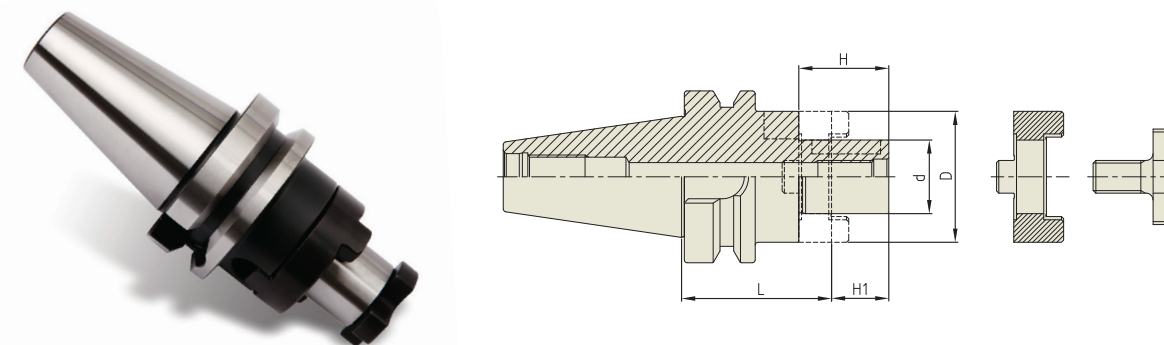
- ▶ Inch type products are available.
- ▶ With "Coolant Through" by coolant channels.
- ▶ Balancing grade G2.5 at 25,000RPM or U max. < 1gmm.
- ▶ For parts, please refer to page D311.

**YIG COMBI-SHELL MILL ARBOR**

**CMA**

**COMBI-SHELL MILL ARBOR**

KOMBI-AUFNAHMEDORN FÜR FRÄSER MIT BOHRUNG  
MANDRIN PORTE-FRAISES COMBINÉS  
MANDRINO PORTA FRESE  
PORTA FRESAS COMBINADO



Unit : mm

TAPER No.	MODEL No.	EDP No.	d	L	D	H1	H	WEIGHT (Kg)
30	CBT30-CMA16-50	P2775601	16	50	32	17	27	0.61
	CBT30-CMA22-50	P2775602	22	50	40	19	31	0.70
	CBT30-CMA27-55	P2775624	27	55	48	21	33	0.92
40	CBT40-CMA16-55	P2775604	16	55	32	17	27	1.14
	CBT40-CMA16-100	P2775615	16	100	32	17	27	1.41
	CBT40-CMA22-55	P2775605	22	55	40	19	31	1.26
	CBT40-CMA22-100	P2775616	22	100	40	19	31	1.68
	CBT40-CMA27-55	P2775606	27	55	48	21	33	1.42
	CBT40-CMA27-100	P2775617	27	100	48	21	33	2.02
	CBT40-CMA32-60	P2775607	32	60	58	24	38	1.72
50	CBT40-CMA32-100	P2775618	32	100	58	24	38	2.51
	CBT40-CMA40-70	P2775625	40	70	70	27	41	2.46
	CBT50-CMA16-70	P2775609	16	70	32	17	27	3.74
	CBT50-CMA16-100	P2775619	16	100	32	17	27	3.92
	CBT50-CMA22-70	P2775610	22	70	40	19	31	3.86
	CBT50-CMA22-100	P2775620	22	100	40	19	31	4.15
	CBT50-CMA27-70	P2775611	27	70	48	21	33	4.04
	CBT50-CMA27-100	P2775621	27	100	48	21	33	4.45
	CBT50-CMA32-70	P2775612	32	70	58	24	38	4.28
	CBT50-CMA32-100	P2775622	32	100	58	24	38	4.86
	CBT50-CMA40-70	P2775613	40	70	70	27	41	4.62
	CBT50-CMA40-100	P2775623	40	100	70	27	41	5.47
	CBT50-CMA50-70	P2775614	50	70	90	30	46	5.48

- ▶ Inch type products are available.
- ▶ Balancing grade G2.5 at 25,000RPM or U max. < 1gmm.
- ▶ For parts, please refer to page D312.

SK (DIN 69871)

CBT (BT DUAL CONTACT)

BT (JIS B6339/MAS 403)

HSK (DIN 69893/ISO 12164)

STRAIGHT

ISO, NT, MTA/MTB, GOST

TOOL HOLDER SET

BORING SYSTEM

ACCESSORY & PARTS

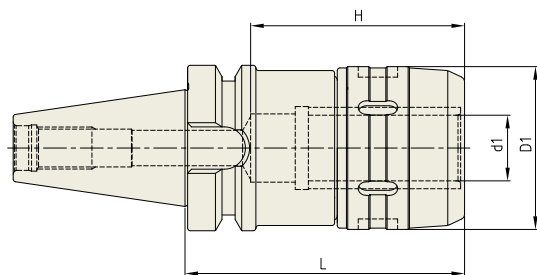


**YG POWER MILLING CHUCK**

**C**

**HIGH-SPEED POWER MILLING CHUCK**

HOCHGESCHWINDIGKEITS FRÄSERFUTTER  
 MANDRIN PORTE FRAISE À GRANDE VITESSE  
 MANDRINI PORTA FRESA PER ALTA VELOCITÀ  
 PORTAHERRAMIENTAS PARA FRESADO DE ALTA VELOCIDAD



Unit : mm

TAPER No.	MODEL No.	EDP No.	d1	D1	L	H	WEIGHT (Kg)
30	CBT30-C20-75HS	P2773251	20	54	75	70	1.50
	CBT30-C25-80HS	P2773252	25	62	80	70	2.00
40	CBT40-C20-80HS	P2773253	20	54	80	70	2.00
	CBT40-C20-105HS	P2773254	20	54	105	70	2.10
	CBT40-C25-105HS	P2773255	25	62	105	80	2.50
	CBT40-C32-90HS	P2773256	32	72	90	100	3.00
	CBT40-C32-105HS	P2773257	32	72	105	100	3.10
	CBT40-C32-135HS	P2773258	32	72	135	100	3.30
50	CBT50-C20-105HS	P2773259	20	54	105	70	4.50
	CBT50-C20-135HS	P2773260	20	54	135	70	4.90
	CBT50-C20-165HS	P2773261	20	54	165	70	5.40
	CBT50-C25-105HS	P2773262	25	62	105	80	5.20
	CBT50-C25-135HS	P2773263	25	62	135	80	5.80
	CBT50-C25-165HS	P2773264	25	62	165	80	6.20
	CBT50-C32-105HS	P2773265	32	72	105	100	6.00
	CBT50-C32-135HS	P2773266	32	72	135	100	6.70
	CBT50-C32-165HS	P2773267	32	72	165	100	7.40
	CBT50-C42-115HS	P2773268	42	92	115	110	6.70
	CBT50-C42-135HS	P2773269	42	92	135	110	7.60
	CBT50-C42-165HS	P2773270	42	92	165	110	8.30

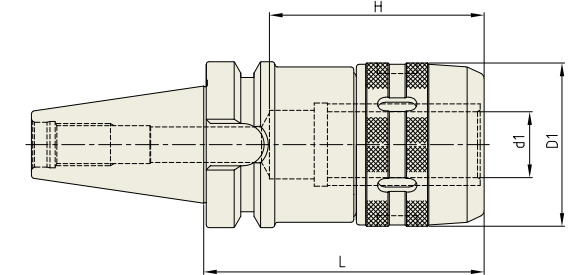
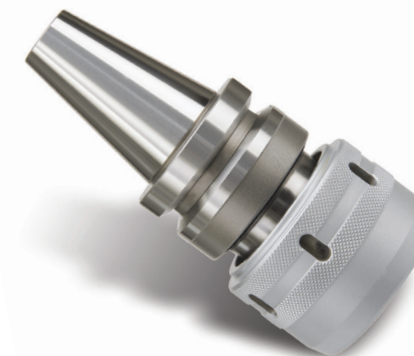
- ▶ Inch type products are available.
- ▶ Balancing Grade is adjusted on Basic holder only without Clamping Cap.
- ▶ For applicable collet and spanner, please refer to the page D314.

**YG POWER MILLING CHUCK**

**C**

**POWER MILLING CHUCK**

FRÄSERSPANNFUTTER  
 MANDRIN PORTE FRAISE  
 MANDRINI PORTA FRESA  
 PORTAHERRAMIENTAS PARA FRESADO



Unit : mm

TAPER No.	MODEL No.	EDP No.	d1	D1	L	H	WEIGHT (Kg)
30	CBT30-C20-75	P2773204	20	54	75	70	1.50
	CBT30-C25-80	P2773205	25	62	80	70	2.00
40	CBT40-C20-80	P2773201	20	54	80	70	2.00
	CBT40-C20-105	P2773206	20	54	105	70	2.10
	CBT40-C25-105	P2773207	25	62	105	80	2.50
	CBT40-C32-90	P2773202	32	72	90	100	3.00
	CBT40-C32-105	P2773203	32	72	105	100	3.10
	CBT40-C32-135	P2773208	32	72	135	100	3.30
50	CBT50-C20-105	P2773209	20	54	105	70	4.50
	CBT50-C20-135	P2773210	20	54	135	70	4.90
	CBT50-C20-165	P2773211	20	54	165	70	5.40
	CBT50-C25-105	P2773212	25	62	105	80	5.20
	CBT50-C25-135	P2773213	25	62	135	80	5.80
	CBT50-C25-165	P2773214	25	62	165	80	6.20
	CBT50-C32-105	P2773215	32	72	105	100	6.00
	CBT50-C32-115	P2773216	32	72	115	100	6.20
	CBT50-C32-135	P2773217	32	72	135	100	6.70
	CBT50-C32-165	P2773218	32	72	165	100	7.40
	CBT50-C42-115	P2773219	42	92	115	110	6.70
	CBT50-C42-135	P2773220	42	92	135	110	7.60
CBT50-C42-165	P2773221	42	92	165	110	8.30	

- ▶ Inch type products are available.
- ▶ For applicable collet and spanner, please refer to the page D314.

SK (DIN 69871)

CBT (BT DUAL CONTACT)

BT (JIS B6339/ MAS 403)

HSK (DIN 69893/ ISO 12164)

STRAIGHT

ISO, NT, MTA/MTB, GOST

TOOL HOLDER SET

BORING SYSTEM

ACCESSORY & PARTS

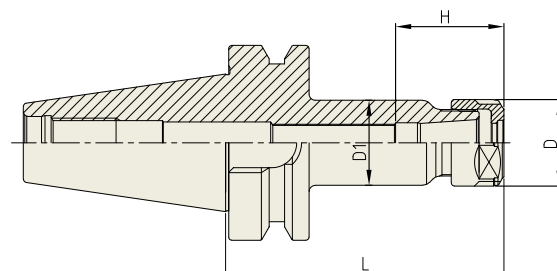




SKA

**SK SLIM CHUCK**

SK SCHLANKE FUTTER  
MANDRIN TYPE SK MINCE  
SK MANDRINI SOTTILI  
PORTAHERRAMIENTAS SK EJE REDUCIDO



TAPER No.	MODEL No.	EDP No.	CLAMPING RANGE	L	D	D1	H	COLLET	WEIGHT (Kg)
30	CBT30-SKA06-60	P2775701	1.8 - 6.0	60	20	19.5	31	SKC6	0.70
	CBT30-SKA06-90	P2775702	1.8 - 6.0	90	20	19.5	31	SKC6	0.80
	CBT30-SKA10-60	P2775703	1.75 - 10.0	60	28	27.5	35	SKC10	0.90
	CBT30-SKA10-90	P2775704	1.75 - 10.0	90	28	27.5	35	SKC10	1.00
	CBT30-SKA13-60	P2775705	2.75 - 13.0	60	33	33	43.6	SKC13	1.00
	CBT30-SKA13-90	P2775706	2.75 - 13.0	90	33	33	43.6	SKC13	1.10
	CBT30-SKA16-60	P2775707	2.75 - 16.0	60	40	40	52	SKC16	1.10
	CBT30-SKA16-90	P2775708	2.75 - 16.0	90	40	40	52	SKC16	1.20
	CBT30-SKA20-60	P2775709	3.5 - 20.0	60	48.5	40	59.6	SKC20	1.30
	CBT30-SKA20-90	P2775710	3.5 - 20.0	90	48.5	40	59.6	SKC20	1.40
	CBT30-SKA25-90	P2775711	16.0 - 25.4	90	55	45	63.4	SKC25	1.50
	40	CBT40-SKA06-90	P2775712	1.8 - 6.0	90	20	19.5	31	SKC6
CBT40-SKA06-120		P2775713	1.8 - 6.0	120	20	19.5	31	SKC6	1.40
CBT40-SKA06-150		P2775714	1.8 - 6.0	150	20	19.5	31	SKC6	1.50
CBT40-SKA10-90		P2775715	1.75 - 10.0	90	28	27.5	35	SKC10	1.20
CBT40-SKA10-120		P2775716	1.75 - 10.0	120	28	27.5	35	SKC10	1.40
CBT40-SKA10-150		P2775717	1.75 - 10.0	150	28	27.5	35	SKC10	1.60
CBT40-SKA13-90		P2775718	2.75 - 13.0	90	33	33	43.6	SKC13	1.40
CBT40-SKA13-120		P2775719	2.75 - 13.0	120	33	33	43.6	SKC13	1.60
CBT40-SKA13-150		P2775720	2.75 - 13.0	150	33	33	43.6	SKC13	1.80
CBT40-SKA16-90		P2775721	2.75 - 16.0	90	40	40	52	SKC16	1.50
CBT40-SKA16-120		P2775722	2.75 - 16.0	120	40	40	52	SKC16	1.70
CBT40-SKA16-150		P2775723	2.75 - 16.0	150	40	40	52	SKC16	1.90
50	CBT40-SKA20-90	P2775724	3.5 - 20.0	90	48.5	48.5	59.6	SKC20	1.60
	CBT40-SKA20-120	P2775725	3.5 - 20.0	120	48.5	48.5	59.6	SKC20	2.00
	CBT40-SKA20-150	P2775726	3.5 - 20.0	150	48.5	48.5	59.6	SKC20	2.40
	CBT40-SKA25-90	P2775727	16.0 - 25.4	90	55	55	63.4	SKC25	1.80
	CBT40-SKA25-120	P2775728	16.0 - 25.4	120	55	55	63.4	SKC25	2.00
	CBT40-SKA25-150	P2775729	16.0 - 25.4	150	55	55	63.4	SKC25	2.30

- ▶ Inch type products are available.
- ▶ Balancing grade G2.5 at 25,000RPM or U max. < 1gmm.
- ▶ For applicable Collet, Nut and Spanner, please refer to page D315~D317.

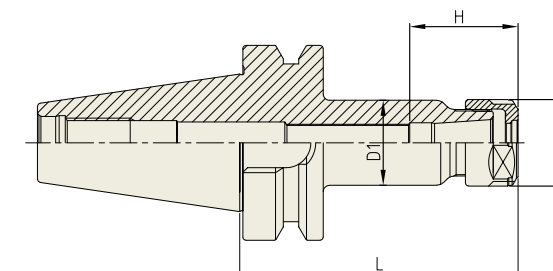
▶ NEXT PAGE



SKA

**SK SLIM CHUCK**

SK SCHLANKE FUTTER  
MANDRIN TYPE SK MINCE  
SK MANDRINI SOTTILI  
PORTAHERRAMIENTAS SK EJE REDUCIDO



TAPER No.	MODEL No.	EDP No.	CLAMPING RANGE	L	D	D1	H	COLLET	WEIGHT (Kg)
30	CBT30-SKA06-60	P2775701	1.8 - 6.0	60	20	19.5	31	SKC6	0.70
	CBT30-SKA06-90	P2775702	1.8 - 6.0	90	20	19.5	31	SKC6	0.80
	CBT30-SKA10-60	P2775703	1.75 - 10.0	60	28	27.5	35	SKC10	0.90
	CBT30-SKA10-90	P2775704	1.75 - 10.0	90	28	27.5	35	SKC10	1.00
	CBT30-SKA13-60	P2775705	2.75 - 13.0	60	33	33	43.6	SKC13	1.00
	CBT30-SKA13-90	P2775706	2.75 - 13.0	90	33	33	43.6	SKC13	1.10
	CBT30-SKA16-60	P2775707	2.75 - 16.0	60	40	40	52	SKC16	1.10
	CBT30-SKA16-90	P2775708	2.75 - 16.0	90	40	40	52	SKC16	1.20
	CBT30-SKA20-60	P2775709	3.5 - 20.0	60	48.5	40	59.6	SKC20	1.30
	CBT30-SKA20-90	P2775710	3.5 - 20.0	90	48.5	40	59.6	SKC20	1.40
	CBT30-SKA25-90	P2775711	16.0 - 25.4	90	55	45	63.4	SKC25	1.50
	40	CBT40-SKA06-90	P2775712	1.8 - 6.0	90	20	19.5	31	SKC6
CBT40-SKA06-120		P2775713	1.8 - 6.0	120	20	19.5	31	SKC6	1.40
CBT40-SKA06-150		P2775714	1.8 - 6.0	150	20	19.5	31	SKC6	1.50
CBT40-SKA10-90		P2775715	1.75 - 10.0	90	28	27.5	35	SKC10	1.20
CBT40-SKA10-120		P2775716	1.75 - 10.0	120	28	27.5	35	SKC10	1.40
CBT40-SKA10-150		P2775717	1.75 - 10.0	150	28	27.5	35	SKC10	1.60
CBT40-SKA13-90		P2775718	2.75 - 13.0	90	33	33	43.6	SKC13	1.40
CBT40-SKA13-120		P2775719	2.75 - 13.0	120	33	33	43.6	SKC13	1.60
CBT40-SKA13-150		P2775720	2.75 - 13.0	150	33	33	43.6	SKC13	1.80
CBT40-SKA16-90		P2775721	2.75 - 16.0	90	40	40	52	SKC16	1.50
CBT40-SKA16-120		P2775722	2.75 - 16.0	120	40	40	52	SKC16	1.70
CBT40-SKA16-150		P2775723	2.75 - 16.0	150	40	40	52	SKC16	1.90
50	CBT40-SKA20-90	P2775724	3.5 - 20.0	90	48.5	48.5	59.6	SKC20	1.60
	CBT40-SKA20-120	P2775725	3.5 - 20.0	120	48.5	48.5	59.6	SKC20	2.00
	CBT40-SKA20-150	P2775726	3.5 - 20.0	150	48.5	48.5	59.6	SKC20	2.40
	CBT40-SKA25-90	P2775727	16.0 - 25.4	90	55	55	63.4	SKC25	1.80
	CBT40-SKA25-120	P2775728	16.0 - 25.4	120	55	55	63.4	SKC25	2.00
	CBT40-SKA25-150	P2775729	16.0 - 25.4	150	55	55	63.4	SKC25	2.30

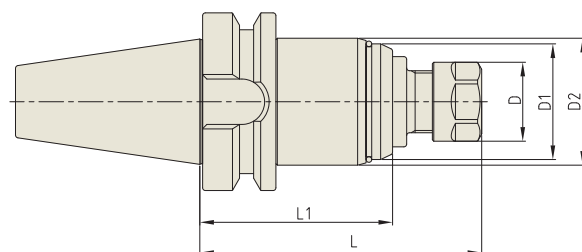
- ▶ Inch type products are available.
- ▶ Balancing grade G2.5 at 25,000RPM or U max. < 1gmm.
- ▶ For applicable Collet, Nut and Spanner, please refer to page D315~D317.

# YG TAPPING ER CHUCK

TER

## TAPPING ER CHUCK

ER - GEWINDESCHNEIDFUTTER  
 MANDRIN DE TARAUDAGE PINCE ER  
 MANDRINI PORTAPINZA ER PER MASCHIATURA  
 PORTAPINZAS ER PARA MACHOS



Unit : mm

TAPER No.	MODEL No.	EDP No.	D	D1	D2	L	L1	NUT / COLLET	WEIGHT (Kg)
40	CBT40-TER16-100	P2774151	28	41	45	100	68.4	ER16	1.45
	CBT40-TER16-150	P2774152	28	41	45	150	118.4	ER16	2.00
	CBT40-TER32-110	P2774153	50	58	63	110	72	ER32	2.20
50	CBT40-TER32-150	P2774154	50	58	63	150	112	ER32	2.70
	CBT50-TER16-115	P2774155	28	41	45	115	79.4	ER16	3.95
	CBT50-TER16-150	P2774156	28	41	45	150	114.4	ER16	4.35
	CBT50-TER32-120	P2774157	50	58	63	120	83	ER32	4.70
	CBT50-TER32-150	P2774158	50	58	63	150	113	ER32	5.20

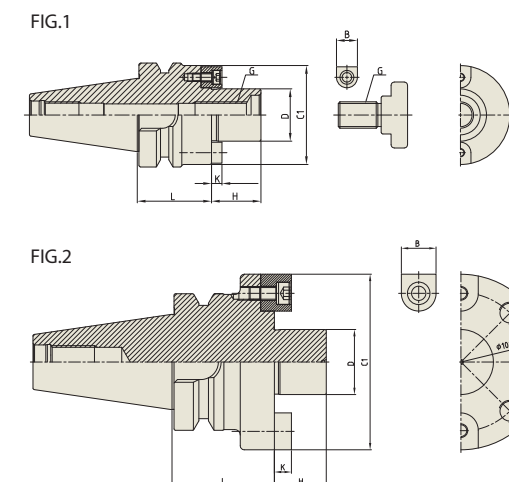
- ▶ Inch type products are available.
- ▶ ER collet of page D296~D302 and Tap ER collet of page D303~D304 are applicable.

# YG FACE MILL ARBOR

FMA

## FACE MILL ARBOR

AUFNAHMEDORN FÜR MESSERKÖPFE  
 ARBRE PORTE FRAISE À ALÉSAGE  
 MANDRINO PORTA FRESE FRONTALE  
 EJE PARA PLATOS DE PLACAS



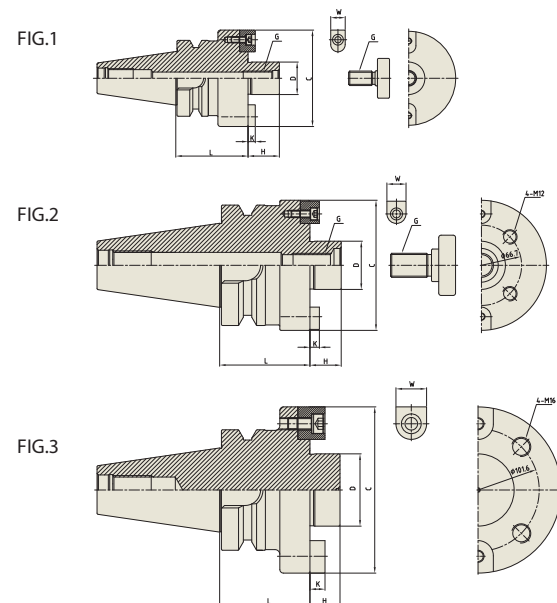
Unit : mm

TAPER No.	MODEL No.	EDP No.	D	L	C1	H	B	K	G	FIG.	WEIGHT (Kg)
30	CBT30-FMA25.4-45	P2779201	25.4	45	50	22	9.52	4.8	M12	1	1.10
	CBT30-FMA31.75-45	P2779202	31.75	45	60	30	12.7	6.35	M16	1	1.20
40	CBT40-FMA25.4-45	P2779203	25.4	45	50	22	9.52	4.8	M12	1	1.50
	CBT40-FMA25.4-90	P2779204	25.4	90	50	22	9.52	4.8	M12	1	3.10
	CBT40-FMA31.75-45	P2779205	31.75	45	60	30	12.7	6.35	M16	1	1.90
	CBT40-FMA31.75-75	P2779206	31.75	75	60	30	12.7	6.35	M16	1	2.70
	CBT40-FMA38.1-60	P2779207	38.1	60	80	34	15.87	8.87	M20	1	2.90
	CBT50-FMA25.4-45	P2779208	25.4	45	50	22	9.52	4.8	M12	1	3.70
	CBT50-FMA25.4-90	P2779209	25.4	90	50	22	9.52	4.8	M12	1	4.60
	CBT50-FMA25.4-150	P2779210	25.4	150	50	22	9.52	4.8	M12	1	5.50
	CBT50-FMA31.75-45	P2779211	31.75	45	60	30	12.7	6.35	M16	1	4.50
	CBT50-FMA31.75-75	P2779212	31.75	75	60	30	12.7	6.35	M16	1	5.30
50	CBT50-FMA31.75-105	P2779213	31.75	105	60	30	12.7	6.35	M16	1	5.80
	CBT50-FMA31.75-150	P2779214	31.75	150	60	30	12.7	6.35	M16	1	6.30
	CBT50-FMA38.1-45	P2779215	38.1	45	80	34	15.87	8.87	M20	1	4.30
	CBT50-FMA38.1-75	P2779216	38.1	75	80	34	15.87	8.87	M20	1	5.60
	CBT50-FMA38.1-105	P2779217	38.1	105	80	34	15.87	8.87	M20	1	6.00
	CBT50-FMA38.1-150	P2779218	38.1	150	80	34	15.87	8.87	M20	1	6.50
	CBT50-FMA50.8-45	P2779219	50.8	45	98	36	19.05	11	M24	1	4.90
	CBT50-FMA50.8-75	P2779220	50.8	75	98	36	19.05	11	M24	1	6.80
	CBT50-FMA47.625-75	P2779221	47.625	75	128.57	38	25.4	12.5	-	2	7.70

- ▶ Fig. 2 : Without "Coolant Through".
- ▶ Balancing grade G2.5 at 25,000RPM or U max. < 1gmm.
- ▶ For parts, please refer to page D313.

**FACE MILL ARBOR**

AUFNAHMEDORN FÜR MESSERKÖPFE  
ARBRE PORTE FRAISE À ALÉSAGE  
MANDRINO PORTA FRESE FRONTALE  
EJE PARA PLATOS DE PLACAS



◆ METRIC TYPE

Unit : mm

TAPER No.	MODEL No.	EDP No.	D	L	C	H	W	K	G	FIG.	WEIGHT (Kg)
30	CBT30-FMB27-45	P2779316	27	45	80	26	12	6	M12	1	2.10
	CBT40-FMB27-60	P2779269	27	60	80	26	12	6	M12	1	2.50
40	CBT40-FMB27-90	P2779270	27	90	80	26	12	6	M12	1	4.70
	CBT40-FMB40-60	P2779271	40	60	85	26	15.87	7	M20	1	7.40
50	CBT50-FMB27-45	P2779272	27	45	80	26	12	6	M12	1	4.00
	CBT50-FMB27-90	P2779273	27	90	80	26	12	6	M12	1	5.80
	CBT50-FMB27-150	P2779274	27	150	80	26	12	6	M12	1	8.20
	CBT50-FMB40-45	P2779275	40	45	85	26	15.87	7.8	M20	1	4.70
	CBT50-FMB40-75	P2779276	40	75	85	26	15.87	7	M20	1	6.10
	CBT50-FMB40-105	P2779277	40	105	85	26	15.87	7	M20	1	8.10
	CBT50-FMB40F-75	P2779278	40	75	108	26	15.87	7.87	M20	2	6.60
	CBT50-FMB60-75	P2779279	60	75	138	25	25.4	12.5	-	3	7.90

◆ INCH TYPE

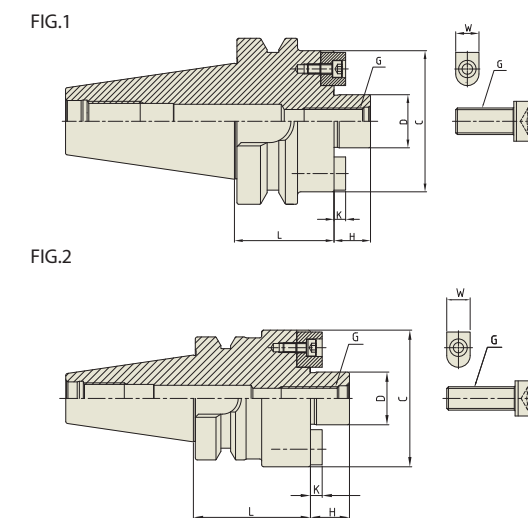
Unit : mm

TAPER No.	MODEL No.	EDP No.	D	L	C	H	W	K	G	FIG.	WEIGHT (Kg)
30	CBT30-FMB25.4-45	P2779314	25.4	45	80	26	9.5	5	M12	1	2.10
	CBT40-FMB25.4-60	P2779281	25.4	60	80	26	9.5	5	M12	1	2.50
40	CBT40-FMB25.4-90	P2779282	25.4	90	80	26	9.5	5	M12	1	4.70
	CBT40-FMB38.1-60	P2779283	38.1	60	85	26	15.9	9	M20	1	7.40
50	CBT50-FMB25.4-45	P2779284	25.4	45	80	26	9.5	5	M12	1	4.00
	CBT50-FMB25.4-90	P2779285	25.4	90	80	26	9.5	5	M12	1	5.80
	CBT50-FMB25.4-150	P2779286	25.4	150	80	26	9.5	5	M12	1	8.20
	CBT50-FMB38.1-45	P2779287	38.1	45	85	26	15.9	9	M20	1	4.70
	CBT50-FMB38.1-75	P2779288	38.1	75	85	26	15.9	9	M20	1	6.10
	CBT50-FMB38.1-105	P2779289	38.1	105	85	26	15.9	9	M20	1	8.70
	CBT50-FMB38.1F-75	P2779290	38.1	75	110	26	15.9	9	M20	2	6.60

- ▶ Fig. 3 : Without "Coolant Through".
- ▶ Balancing grade G2.5 at 25,000RPM or U max. < 1gmm.
- ▶ For parts, please refer to page D313.

**FACE MILL ARBOR**

AUFNAHMEDORN FÜR MESSERKÖPFE  
ARBRE PORTE FRAISE À ALÉSAGE  
MANDRINO PORTA FRESE FRONTALE  
EJE PARA PLATOS DE PLACAS



◆ METRIC TYPE

Unit : mm

TAPER No.	MODEL No.	EDP No.	D	L	C	H	W	K	G	FIG.	WEIGHT (Kg)
30	CBT30-FMC22-45	P2776131	22	45	45	18	10	5	M10	1	0.80
	CBT40-FMC22-45	P2776132	22	45	45	18	10	5	M10	1	1.30
40	CBT40-FMC27-60	P2776133	27	60	70	20	12	6	M12	2	1.50
	CBT40-FMC32-60	P2776134	32	60	83	22	14	7	M16	2	2.30
	CBT50-FMC22-60	P2776135	22	60	45	18	10	5	M10	1	4.20
50	CBT50-FMC22-105	P2776136	22	105	45	18	10	5	M10	1	4.70
	CBT50-FMC22-150	P2776137	22	150	45	18	10	5	M10	1	5.30
	CBT50-FMC27-45	P2776138	27	45	70	20	12	6	M12	1	4.10
	CBT50-FMC27-90	P2776139	27	90	70	20	12	6	M12	1	5.50
	CBT50-FMC27-150	P2776140	27	150	70	20	12	6	M12	1	7.30
	CBT50-FMC32-60	P2776141	32	60	85	22	14	7	M16	1	4.20
	CBT50-FMC32-105	P2776142	32	105	85	22	14	7	M16	1	5.50
	CBT50-FMC32-150	P2776143	32	150	85	22	14	7	M16	1	7.00

◆ INCH TYPE

Unit : mm

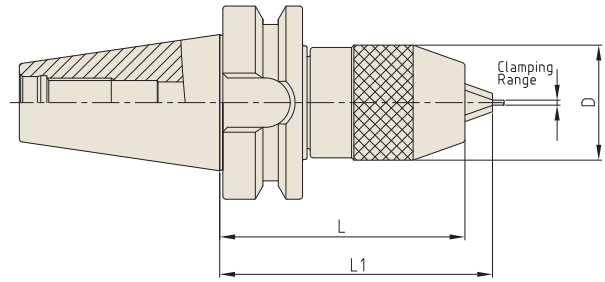
TAPER No.	MODEL No.	EDP No.	D	L	C	H	W	K	G	FIG.	WEIGHT (Kg)
30	CBT30-FMC25.4-45	P2776144	25.4	45	70	20	9.5	6	M12	2	1.10
	CBT40-FMC25.4-60	P2776145	25.4	60	70	20	9.5	6	M12	2	1.50
40	CBT40-FMC25.4-90	P2776146	25.4	90	70	20	9.5	6	M12	2	2.20
	CBT40-FMC38.1-60	P2776147	38.1	60	85	22	15.9	7	M16	2	2.30
	CBT40-FMC38.1-75	P2776148	38.1	75	85	22	15.9	7	M16	2	2.60
50	CBT50-FMC25.4-45	P2776149	25.4	45	70	20	9.5	6	M12	1	4.10
	CBT50-FMC25.4-90	P2776150	25.4	90	70	20	9.5	6	M12	1	5.50
	CBT50-FMC25.4-150	P2776151	25.4	150	70	20	9.5	6	M12	1	7.30
	CBT50-FMC38.1-45	P2776152	38.1	45	85	22	15.9	7	M16	1	4.20
	CBT50-FMC38.1-75	P2776153	38.1	75	85	22	15.9	7	M16	1	5.50
	CBT50-FMC38.1-105	P2776154	38.1	105	85	22	15.9	7	M16	1	7.00

- ▶ Balancing grade G2.5 at 25,000RPM or U max. < 1gmm.
- ▶ For parts, please refer to page D313.



**NC DRILL CHUCK (KEYLESS TYPE)**

NC - BOHRFUTTER  
MANDRIN DE PERÇAGE NC  
NC MANDRINI PORTA PUNTE  
PORTABROCAS PARA BROCAS NC



Unit : mm

TAPER No.	MODEL No.	EDP No.	CLAMPING RANGE	D	L (Min.)	L1 (Max.)	WEIGHT (Kg)
30	CBT30-NPU8-75	P2776066	0.3 - 8.0	36.5	75	80.7	0.80
	CBT30-NPU13-105	P2776067	1.0 - 13.0	50.4	105	115	1.80
40	CBT40-NPU8-80	P2776068	0.3 - 8.0	36.5	80	85.7	1.50
	CBT40-NPU8-110	P2776054	0.3 - 8.0	36.5	110	115.7	1.80
	CBT40-NPU8-150	P2776055	0.3 - 8.0	36.5	150	155.7	2.60
	CBT40-NPU13-95	P2776069	1.0 - 13.0	50.4	95	105	2.10
	CBT40-NPU13-130	P2776057	1.0 - 13.0	50.4	130	140	2.70
	CBT40-NPU13-150	P2776058	1.0 - 13.0	50.4	150	160	3.40
50	CBT50-NPU8-90	P2776059	0.3 - 8.0	36.5	90	95.7	4.20
	CBT50-NPU8-110	P2776060	0.3 - 8.0	36.5	110	115.7	4.50
	CBT50-NPU8-170	P2776061	0.3 - 8.0	36.5	170	175.7	5.20
	CBT50-NPU13-105	P2776070	1.0 - 13.0	50.4	105	115	4.80
	CBT50-NPU13-130	P2776063	1.0 - 13.0	50.4	130	140	5.20
	CBT50-NPU13-150	P2776064	1.0 - 13.0	50.4	150	160	5.50
	CBT50-NPU13-190	P2776065	1.0 - 13.0	50.4	190	200	5.90

► Supplied with hook wrench. (Size NPU 8 : 8S, NPU 13 : 13S)

**YG-1 TOOLING SYSTEM**

**BT**  
**(JIS B6339/MAS 403)**



- HYDRAULIC CHUCK
- SHRINK FIT HOLDER
- ER COLLET CHUCK
- END MILL HOLDER (SIDE LOCK ARBOR)
- SHELL MILL ARBOR
- COMBI-SHELL MILL ARBOR
- POWER MILLING CHUCK
- MORSE TAPER ARBOR
- SK SLIM CHUCK
- SYNCHRO TAPPING CHUCK
- ONE STEP TAPPING CHUCK
- TAPPING ER CHUCK
- TAPPING CHUCK
- FACE MILL ARBOR
- COPY MILL ARBOR
- INDEXABLE DRILL HOLDER
- NC DRILL CHUCK
- SIDE CUTTER ARBOR
- JACOBS TAPER ARBOR
- BLANK BAR
- TEST BAR