

**ACCESSORY & PARTS**

Description	HYD. CHUCK - Test Piece	HYD. CHUCK - Reduction Sleeve	SHRINK FIT - Heating Machine
Page	D290	HK : D291 HS : D292 HF : D293 HR : D294	D295
			
ER COLLET CHUCK - Collet & Nut	END MILL HOLDER - Side Lock Bolt	SHELL MILL ARBOR - Bolt & Key	FACE MILL ARBOR - Bolt & Key
COLLET : D296 - 304 NUT : D305 - 308 SPANNER : D309	D310	SMA : D311 CMA : D312	D313
			
POWER MILLING CHUCK - Collet & Spanner	SK SLIM CHUCK - Collet & Nut	TAPPING CHUCK - Tap Adaptor	PULL STUD BOLT
D314	COLLET : D315 - 316 NUT & SPANNER : D317	D318 - 319	D320 - 321
			
TOOL CLAMP	HEIGHT PRESETTER	COOLANT TUBE & SPANNER (HSK)	ADJUST BOLT (HSK MQL1)
D322	D322	D323	D324
			

**YG-1 TOOLING SYSTEM**

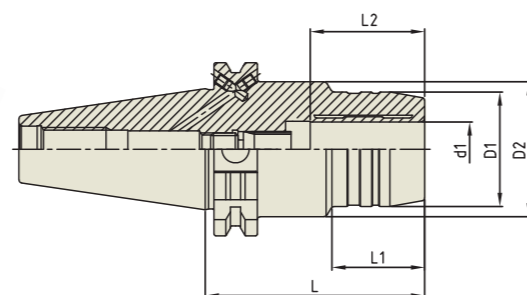
**SK  
(DIN 69871)**



- HYDRAULIC CHUCK
- SHRINK FIT HOLDER
- ER COLLET CHUCK
- END MILL HOLDER
- SHELL MILL ARBOR
- COMBI-SHELL MILL ARBOR
- POWER MILLING CHUCK
- MORSE TAPER ARBOR
- SK SLIM CHUCK
- SYNCHRO TAPPING CHUCK
- ONE STEP TAPPING CHUCK
- TAPPING ER CHUCK
- TAPPING CHUCK
- COPY MILL ARBOR
- INDEXABLE DRILL HOLDER
- NC DRILL CHUCK
- BLANK BAR
- TEST BAR

**HYDRAULIC CHUCK (RADIAL TOOL LENGTH PRE-SETTING TYPE)**

HYDRAULIK SPANNFUTTER (RADIALE WERKZEUGLÄGEN VOREINSTELLUNG)  
 MANDRIN HYDRAULIQUE (BANC DE PRÉ-RÉGLAGE RADIAL)  
 MANDRINI IDRAULICI (UTENSILI RADIALI PER AZZERAMENTO)  
 PORTAHERRAMIENTAS HIDRAULICO (AJUSTE DE LONGITUD TIPO PRE-SETTING)

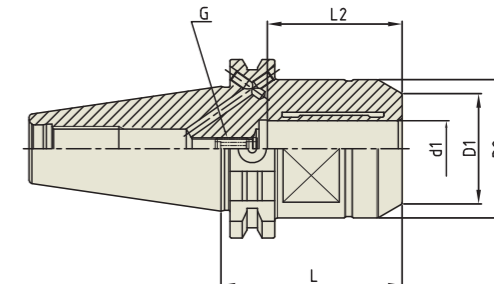
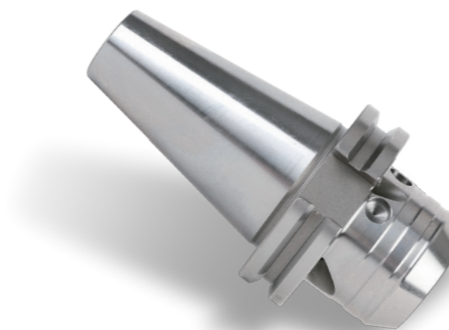


Unit : mm									
TAPER No.	MODEL No.	EDP No.	d1	D1	D2	L	L1	L2	WEIGHT(Kg)
30	SK30-HCR12-85	P2770001	12	32	44.5	85	40	37	0.90
	SK30-HCR20-85	P2770003	20	44	-	85	-	42	1.00
40	SK40AD/B-HCR12-80.5	P2554018	12	32	49.5	80.5	31.5	37	1.50
	SK40AD/B-HCR20-80.5	P2554019	20	42	49.5	80.5	34	42	1.60
	SK40AD/B-HCR32-110	P2770004	32	63	80	110	50	55	2.20
50	SK50AD/B-HCR12-80.5	P2770005	12	32	49.5	80.5	35	37	3.90
	SK50AD/B-HCR20-80.5	P2770006	20	42	44.5	80.5	44	42	4.00
	SK50AD/B-HCR32-100	P2770002	32	60	-	100	-	55	4.70

- ▶ CAT(ASME B5.50) taper and Inch type products are available.
- ▶ Balancing grade G2.5 at 25,000RPM or U max. < 1gmm.
- ▶ Supplied with clamping T-wrench.
- ▶ For applicable Hydraulic Chuck collet, please refer to page D291~D294.

**HYDRAULIC CHUCK (Power E Hydro)**

HYDRAULIK SPANNFUTTER (POWER E HYDRO)  
 MANDRIN HYDRAULIQUE (POWER E HYDRO)  
 MANDRINI IDRAULICI (POWER E HYDRO)  
 PORTAHERRAMIENTAS HIDRAULICO (POWER E HYDRO)

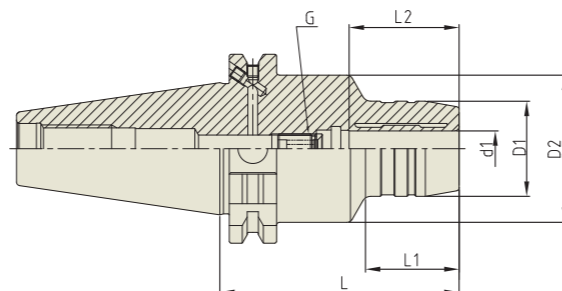


Unit : mm									
TAPER No.	MODEL No.	EDP No.	d1	D1	D2	L	L2	G	WEIGHT (Kg)
40	SK40AD/B-HC12P-50	P2776651P	12	32	42	50	41	M8x1.0	1.00
	SK40AD/B-HC20P-64.5	P2534001P	20	39.3	49.3	64.5	48	M8x1.0	1.20
50	SK50AD/B-HC20P-64.5	P2756010P	20	39.3	49.3	64.5	48	M8x1.0	2.80
	SK50AD/B-HC32P-81	P2534002P	32	58.5	72	81	57	M8x1.0	3.90

- ▶ CAT(ASME B5.50) taper and Inch type products are available.
- ▶ Balancing grade G2.5 at 25,000RPM or U max. < 1gmm.
- ▶ Supplied with clamping T-wrench.
- ▶ For applicable Hydraulic Chuck collet, please refer to page D291~D294.

**HYDRAULIC CHUCK (STANDARD)**

HYDRAULIK SPANNFUTTER (STANDARD)  
 MANDRIN HYDRAULIQUE (STANDARD)  
 MANDRINI IDRAULICI (STANDARD)  
 PORTAHERRAMIENTAS HIDRAULICO (ESTÁNDAR)



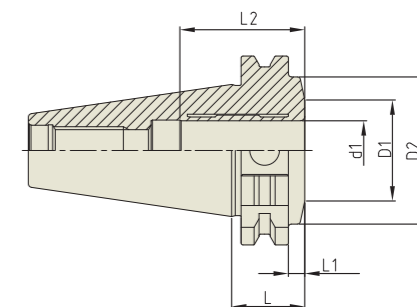
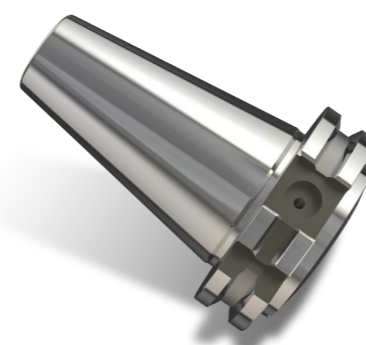
Unit : mm

TAPER No.	MODEL No.	EDP No.	d1	D1	D2	L	L1	L2	G	WEIGHT (Kg)
30	SK30-HC6-70	P2770101	6	26	45	70	20	27	M5x0.8	0.65
	SK30-HC8-70	P2770110	8	28	45	70	20	27	M6x1.0	0.65
	SK30-HC10-75	P2770102	10	30	45	75	21	32	M8x1.0	0.73
	SK30-HC12-85	P2770111	12	32	45	85	40	37	M10x1.0	0.80
	SK30-HC14-85	P2770112	14	34	45	85	22	37	M10x1.0	0.80
	SK30-HC16-90	P2770113	16	38	45	90	50	42	M6x1.0	0.90
	SK30-HC18-90	P2770114	18	40	45	90	50	42	M10x1.0	0.90
	SK30-HC20-90	P2770115	20	42	45	90	50	42	M6x1.0	0.90
40	SK40AD/B-HC6-80.5	P2554017	6	26	49.5	80.5	30	27	M5x0.8	1.31
	SK40AD/B-HC6-110	P2554016	6	26	49.5	110	29.5	27	M5x0.8	1.76
	SK40AD/B-HC8-80.5	P2554025	8	28	49.5	80.5	30	27	M6x1.0	1.34
	SK40AD/B-HC8-110	P2770117	8	28	49.5	110	30	27	M6x1.0	1.76
	SK40AD/B-HC10-80.5	P2554004	10	30	49.5	80.5	31	32	M8x1.0	1.34
	SK40AD/B-HC10-110	P2554009	10	30	49.5	110	31	32	M8x1.0	1.76
	SK40AD/B-HC12-80.5	P2554011	12	32	49.5	80.5	31.5	37	M10x1.0	1.34
	SK40AD/B-HC12-110	P2554010	12	32	49.5	110	31.5	37	M10x1.0	1.76
	SK40AD/B-HC14-80.5	P2776653	14	34	49.5	80.5	32	37	M10x1.0	1.35
	SK40AD/B-HC14-110	P2776654	14	34	49.5	110	32	37	M10x1.0	1.75
	SK40AD/B-HC16-80.5	P2554013	16	38	49.5	80.5	33	42	M12x1.0	1.34
	SK40AD/B-HC16-110	P2554012	16	38	49.5	110	33	42	M12x1.0	1.76
	SK40AD/B-HC20-80.5	P2554015	20	42	49.5	80.5	34	42	M16x1.0	1.35
	SK40AD/B-HC20-110	P2554014	20	42	49.5	110	34	42	M16x1.0	1.78
SK40AD/B-HC25-80.5	P2770103	25	55	66	80.5	22	48	M16x1.0	1.75	
SK40AD/B-HC32-110	P2770126	32	63	80	110	25.5	55	M16x1.0	2.60	
50	SK50AD/B-HC6-80.5	P2770104	6	26	49.5	80.5	30	27	M5x0.8	3.00
	SK50AD/B-HC8-80.5	P2770116	8	28	49.5	80.5	30	27	M6x1.0	3.00
	SK50AD/B-HC10-80.5	P2770106	10	30	49.5	80.5	32	32	M8x1.0	3.00
	SK50AD/B-HC12-80.5	P2770118	12	32	49.5	80.5	35	37	M10x1.0	3.05
	SK50AD/B-HC14-80.5	P2776655	14	34	49.5	80.5	37	37	M10x1.0	3.07
	SK50AD/B-HC16-80.5	P2770108	16	38	49.5	80.5	40	42	M12x1.0	3.10
SK50AD/B-HC20-80.5	P2770119	20	42	49.5	80.5	40	42	M16x1.0	3.15	

- ▶ CAT(ASME B5.50) taper and Inch type products are available.
- ▶ Balancing grade G2.5 at 25,000RPM or U max. < 1gmm.
- ▶ Supplied with clamping T-wrench.
- ▶ For applicable Hydraulic Chuck collet, please refer to page D291~D294.

**HYDRAULIC CHUCK (ULTRA SHORT)**

HYDRAULIK SPANNFUTTER (KURZ)  
 MANDRIN HYDRAULIQUE (COURT)  
 MANDRINI IDRAULICI (CORTO)  
 PORTAHERRAMIENTAS HIDRAULICO (CORTO)



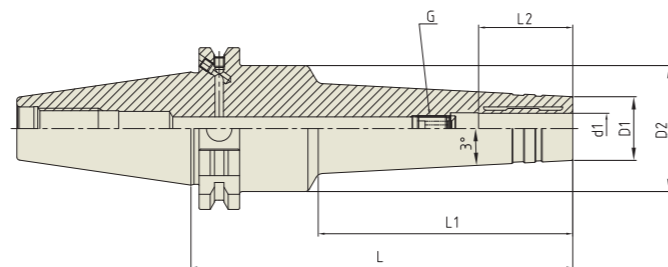
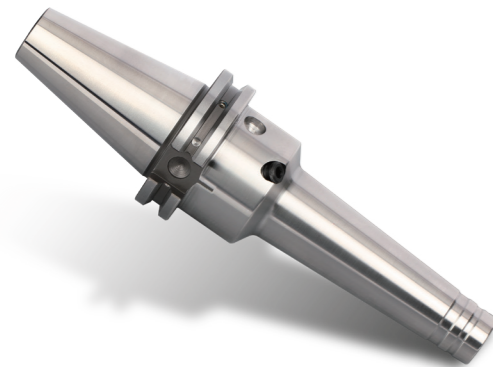
Unit : mm

TAPER No.	MODEL No.	EDP No.	d1	D1	D2	L	L1	L2	WEIGHT (Kg)
40	SK40-HC20-24.6	P2770120	20	34	49.5	24.6	5.5	42	0.81
50	SK50-HC32-30.9	P2770121	32	49	70.5	30.9	11.85	55	2.63

- ▶ CAT(ASME B5.50) taper and Inch type products are available.
- ▶ Balancing grade G2.5 at 25,000RPM or U max. < 1gmm.
- ▶ Supplied with clamping T-wrench.
- ▶ For applicable Hydraulic Chuck collet, please refer to page D291~D294.

**HYDRAULIC CHUCK (SLIM)**

HYDRAULIK SPANNFUTTER (SCHLANK)  
 MANDRIN HYDRAULIQUE (MINCE)  
 MANDRINI IDRAULICI (SOTTILE)  
 PORTAHERRAMIENTAS HIDRAULICO (DELGADO)



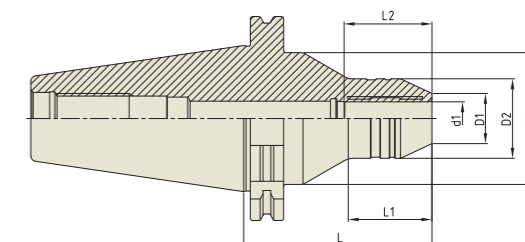
Unit : mm

TAPER No.	MODEL No.	EDP No.	d1	D1	D2	L	L1	L2	G	WEIGHT (Kg)
40	SK40AD/B-HMC6-120	P2770701	6	20	49.5	120	70	27	M5×0.8	1.40
	SK40AD/B-HMC6-150	P2770702	6	20	49.5	150	100	27	M5×0.8	1.65
	SK40AD/B-HMC8-120	P2770703	8	22	49.5	120	70	27	M6×1.0	1.40
	SK40AD/B-HMC8-150	P2770704	8	22	49.5	150	100	27	M6×1.0	1.65
	SK40AD/B-HMC10-120	P2770705	10	24	49.5	120	70	32	M8×1.0	1.40
	SK40AD/B-HMC10-150	P2770706	10	24	44.5	150	100	32	M8×1.0	1.65
	SK40AD/B-HMC12-120	P2770707	12	25	49.5	120	70	37	M10×1.0	1.40
	SK40AD/B-HMC12-150	P2770708	12	25	44.5	150	100	37	M10×1.0	1.65
	SK40AD/B-HMC14-120	P2770719	14	27	49.5	120	70	37	M10×1.0	1.50
	SK40AD/B-HMC14-150	P2770720	14	27	49.5	150	100	37	M10×1.0	1.70
	SK40AD/B-HMC16-120	P2770709	16	32	49.5	120	70	42	M12×1.0	1.45
	SK40AD/B-HMC16-150	P2770710	16	32	49.5	150	100	42	M12×1.0	1.70
SK40AD/B-HMC20-120	P2770711	20	34	49.5	120	70	42	M16×1.0	1.50	
SK40AD/B-HMC20-150	P2770712	20	34	49.5	150	100	42	M16×1.0	1.70	
50	SK50AD/B-HMC6-150	P2770713	6	20	44.5	150	100	27	M5×0.8	4.50
	SK50AD/B-HMC8-150	P2770714	8	22	44.5	150	100	27	M6×1.0	4.50
	SK50AD/B-HMC10-150	P2770715	10	24	44.5	150	100	32	M8×1.0	4.50
	SK50AD/B-HMC12-150	P2770716	12	25	44.5	150	100	37	M10×1.0	4.50
	SK50AD/B-HMC14-150	P2770721	14	27	44.5	150	100	37	M10×1.0	4.60
	SK50AD/B-HMC16-150	P2770717	16	32	44.5	150	100	42	M12×1.0	4.70
SK50AD/B-HMC20-150	P2770718	20	34	44.5	150	100	42	M16×1.0	5.00	

- ▶ CAT(ASME B5.50) taper and Inch type products are available.
- ▶ Balancing grade G2.5 at 25,000RPM or U max. < 1gmm.
- ▶ Supplied with clamping T-wrench.
- ▶ For applicable Hydraulic Chuck collet, please refer to page D291~D294.

**HYDRAULIC CHUCK (For GRINDER)**

HYDRAULIK SPANNFUTTER FÜR DEN FORMENBAU  
 MANDRIN HYDRAULIQUE POUR MOULISTE  
 MANDRINI IDRAULICI PER STAMPAGGIO  
 PORTAHERRAMIENTAS HIDRAULICO PARA MOLDES



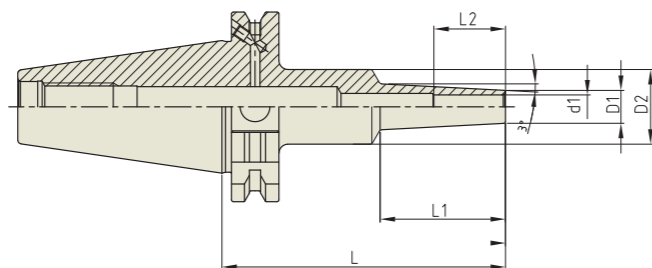
Unit : mm

TAPER No.	MODEL No.	EDP No.	d1	D1	D2	D3	L	L1	L2	WEIGH (Kg)
50	SK50-HC6G-90	P2770951	6	14	30	63	90	30	27	3.00
	SK50-HC8G-90	P2770952	8	16	30	63	90	30	27	3.00
	SK50-HC10G-90	P2770953	10	18	30	63	90	30	32	3.00
	SK50-HC12G-90	P2770954	12	21	33	63	90	35	37	3.05
	SK50-HC14G-90	P2770955	14	22	35	63	90	35	37	3.10
	SK50-HC16G-90	P2770956	16	24	38	63	90	40	42	3.10
	SK50-HC18G-90	P2770957	18	26	40	63	90	40	42	3.10
	SK50-HC20G-110	P2770958	20	29	42	63	110	40	42	3.30
	SK50-HC25G-110	P2770959	25	34	50	70	110	45	48	3.60
	SK50-HC32G-110	P2770960	32	42	56	80	110	50	55	4.20

- ▶ Supplied with clamping T-wrench.
- ▶ For applicable Hydraulic Chuck collet, please refer to page D291~D294.

**SHRINK FIT HOLDER (EXTRA SLIM)**

SCHRUMPFUTTER  
MANDRIN DE FRETTAGE  
MADRINI PER CALLETAMENTO A CALDO  
PORTAHERRAMIENTAS DE COMPRESION POR CALOR



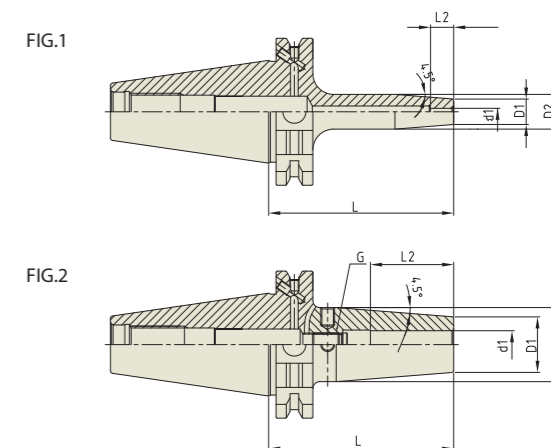
Unit : mm

TAPER No.	MODEL No.	EDP No.	d1	D1	D2	L	L1	L2	WEIGHT (Kg)
30	SK30-SFHS3-60	P2771332S	3	6	20	60	22	9	-
	SK30-SFHS3-80	P2771333S	3	6	25	80	42	9	-
	SK30-SFHS4-60	P2771334S	4	7	20	60	22	12	-
	SK30-SFHS4-80	P2771335S	4	7	25	80	42	12	-
	SK30-SFHS6-60	P2771336S	6	9	20	60	22	18	-
	SK30-SFHS6-80	P2771337S	6	9	25	80	42	18	-
40	SK40AD/B-SFHS3-95	P2771338S	3	6	25	95	42	9	0.89
	SK40AD/B-SFHS3-120	P2771339S	3	6	25	120	67	9	0.91
	SK40AD/B-SFHS4-95	P2771340S	4	7	25	95	42	12	0.90
	SK40AD/B-SFHS4-120	P2771341S	4	7	25	120	67	12	0.92
	SK40AD/B-SFHS6-95	P2771342S	6	9	25	95	42	18	0.90
	SK40AD/B-SFHS6-120	P2771343S	6	9	25	120	67	18	0.93
	SK40AD/B-SFHS8-95	P2771344S	8	11	25	95	42	24	0.90
	SK40AD/B-SFHS8-120	P2771345S	8	11	32	120	67	24	1.01
	SK40AD/B-SFHS10-95	P2771346S	10	13	25	95	42	30	0.91
	SK40AD/B-SFHS10-120	P2771347S	10	13	32	120	67	30	1.02
	SK40AD/B-SFHS12-95	P2771348S	12	15	32	95	42	30	0.99
	SK40AD/B-SFHS12-120	P2771349S	12	15	32	120	67	30	1.02
50	SK50AD/B-SFHS3-110	P2771350S	3	6	25	110	42	9	2.77
	SK50AD/B-SFHS3-160	P2771351S	3	6	25	160	97	9	2.79
	SK50AD/B-SFHS4-110	P2771352S	4	7	25	110	42	12	2.75
	SK50AD/B-SFHS4-160	P2771353S	4	7	25	160	97	12	2.80
	SK50AD/B-SFHS6-110	P2771354S	6	9	26	110	42	18	2.74
	SK50AD/B-SFHS6-160	P2771355S	6	9	26	160	97	18	2.85
	SK50AD/B-SFHS8-110	P2771356S	8	11	36	110	42	24	2.84
	SK50AD/B-SFHS8-160	P2771357S	8	11	36	160	97	24	2.92
	SK50AD/B-SFHS10-110	P2771358S	10	13	36	110	42	30	2.85
	SK50AD/B-SFHS10-160	P2771359S	10	13	36	160	97	30	2.93
	SK50AD/B-SFHS12-110	P2771360S	12	15	36	110	42	30	2.85
	SK50AD/B-SFHS12-160	P2771361S	12	15	36	160	97	30	2.96

▶ CAT(ASME B5.50) taper and Inch type products are available.  
▶ Balancing grade G2.5 at 25,000RPM or U max. < 1gmm.

**SHRINK FIT HOLDER**

SCHRUMPFUTTER  
MANDRIN DE FRETTAGE  
MADRINI PER CALLETAMENTO A CALDO  
PORTAHERRAMIENTAS DE COMPRESION POR CALOR



Unit : mm

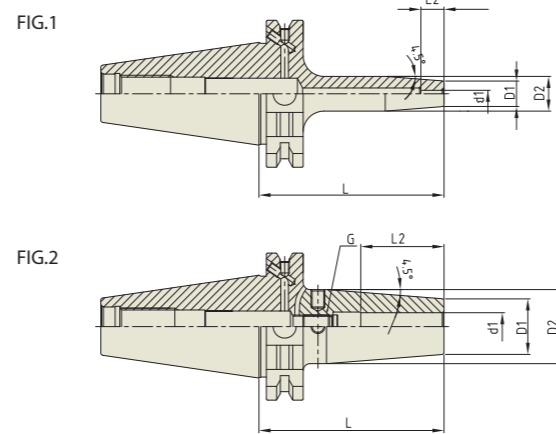
TAPER No.	MODEL No.	EDP No.	d1	D1	D2	L	L2	G	FIG.	WEIGHT (Kg)
30	SK30-SFH3-60	P2771308A	3	11	15	60	10	-	1	0.40
	SK30-SFH4-60	P2771309A	4	11	15	60	12	-	1	0.40
	SK30-SFH5-60	P2771310A	5	11	15	60	15	-	1	0.40
	SK30-SFH6-60	P2771311A	6	21	27	60	36	M5x0.8	2	0.40
	SK30-SFH8-60	P2771312A	8	21	27	60	36	M6x1.0	2	0.40
	SK30-SFH10-80	P2771313A	10	24	32	80	42	M8x1.0	2	0.40
	SK30-SFH12-80	P2771314A	12	24	32	80	47	M10x1.0	2	0.42
	SK30-SFH14-80	P2771315A	14	27	34	80	47	M10x1.0	2	-
	SK30-SFH16-80	P2771316A	16	27	34	80	50	M12x1.0	2	0.42
	SK30-SFH18-80	P2771319A	18	33	42	80	50	M12x1.0	2	-
	SK30-SFH20-90	P2771318A	20	33	42	90	52	M16x1.0	2	0.44
	40	SK40AD/B-SFH3-80	P2771301	3	11	15	80	10	-	1
SK40AD/B-SFH4-80		P2771302	4	11	15	80	12	-	1	1.00
SK40AD/B-SFH5-80		P2771303	5	11	15	80	15	-	1	1.00
SK40AD/B-SFH6-80		P2554058	6	21	27	80	36	M5x0.8	2	1.10
SK40AD/B-SFH6-130		P2771320A	6	21	27	130	36	M5x0.8	2	-
SK40AD/B-SFH6-160		P2771304	6	21	27	160	36	M5x0.8	2	1.15
SK40AD/B-SFH8-80		P2600009	8	21	27	80	36	M6x1.0	2	1.11
SK40AD/B-SFH8-130		P2771321A	8	21	27	130	36	M6x1.0	2	-
SK40AD/B-SFH8-160		P2771305	8	21	27	160	36	M6x1.0	2	1.15
SK40AD/B-SFH10-80		P2554052	10	24	32	80	42	M8x1.0	2	1.10
SK40AD/B-SFH10-130		P2771322A	10	24	32	130	42	M8x1.0	2	-
SK40AD/B-SFH10-160		P2771306	10	24	32	160	42	M8x1.0	2	1.15
SK40AD/B-SFH12-80		P2600008	12	24	32	80	47	M10x1.0	2	1.10
SK40AD/B-SFH12-130		P2771323A	12	24	32	130	47	M10x1.0	2	-
SK40AD/B-SFH12-160		P2771307	12	24	32	160	47	M10x1.0	2	1.15
SK40AD/B-SFH14-80		P2771319	14	27	34	80	47	M10x1.0	2	1.20
SK40AD/B-SFH14-130		P2771324A	14	27	34	130	47	M10x1.0	2	-
SK40AD/B-SFH14-160		P2771320	14	27	34	160	47	M10x1.0	2	1.50

▶ CAT(ASME B5.50) taper and Inch type products are available.  
▶ Supplied without balancing screws.  
▶ Balancing grade G2.5 at 25,000RPM or U max. < 1gmm.

▶ NEXT PAGE

**SHRINK FIT HOLDER**

SCHRUMPFUTTER  
MANDRIN DE FRETTAGE  
MADRINI PER CALLETAMENTO A CALDO  
PORTAHERRAMIENTAS DE COMPRESION POR CALOR



Unit : mm

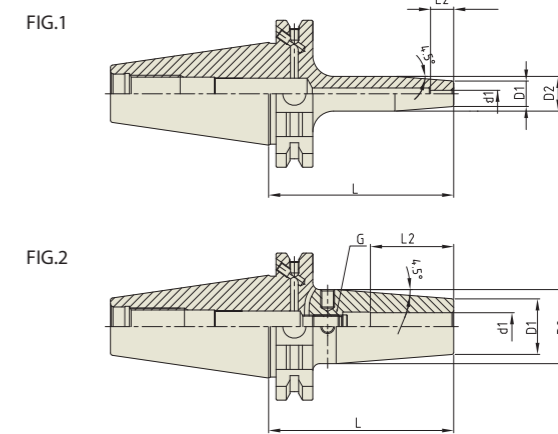
TAPER No.	MODEL No.	EDP No.	d1	D1	D2	L	L2	G	FIG.	WEIGHT (Kg)
40	SK40AD/B-SFH16-80	P2554054	16	27	34	80	50	M12x1.0	2	1.20
	SK40AD/B-SFH16-130	P2771325A	16	27	34	130	50	M12x1.0	2	-
	SK40AD/B-SFH16-160	P2554053	16	27	34	160	50	M12x1.0	2	1.50
	SK40AD/B-SFH18-80	P2771321	18	33	42	80	50	M12x1.0	2	1.30
	SK40AD/B-SFH18-130	P2771326A	18	33	42	130	50	M12x1.0	2	-
	SK40AD/B-SFH18-160	P2771322	18	33	42	160	50	M12x1.0	2	1.60
	SK40AD/B-SFH20-80	P2554056	20	33	42	80	52	M16x1.0	2	1.40
	SK40AD/B-SFH20-130	P2771327A	20	33	42	130	52	M16x1.0	2	-
	SK40AD/B-SFH20-160	P2554055	20	33	42	160	52	M16x1.0	2	1.70
	SK40AD/B-SFH25-90	P2771323	25	44	53	90	58	M16x1.0	2	1.70
	SK40AD/B-SFH25-130	P2771328A	25	44	53	130	58	M16x1.0	2	-
	SK40AD/B-SFH25-160	P2771324	25	44	53	160	58	M16x1.0	2	2.00
50	SK50AD/B-SFH3-80	P2771325	3	11	15	80	10	-	1	1.50
	SK50AD/B-SFH4-80	P2771326	4	11	15	80	12	-	1	1.50
	SK50AD/B-SFH5-80	P2771327	5	11	15	80	15	-	1	1.50
	SK50AD/B-SFH6-80	P2771328	6	21	27	80	36	M5x0.8	2	1.50
	SK50AD/B-SFH6-130	P2771329A	6	21	27	130	36	M5x0.8	2	-
	SK50AD/B-SFH6-160	P2771329	6	21	27	160	36	M5x0.8	2	2.00
	SK50AD/B-SFH6-200	P2771330A	6	21	27	200	36	M5x0.8	2	-
	SK50AD/B-SFH8-80	P2760010	8	21	27	80	36	M6x1.0	2	1.50
	SK50AD/B-SFH8-130	P2771331A	8	21	27	130	36	M6x1.0	2	-
	SK50AD/B-SFH8-160	P2760015	8	21	27	160	36	M6x1.0	2	2.00
	SK50AD/B-SFH8-200	P2771332A	8	21	27	200	36	M6x1.0	2	-
	SK50AD/B-SFH10-80	P2761010	10	24	32	80	42	M8x1.0	2	1.50
	SK50AD/B-SFH10-130	P2771333A	10	24	32	130	42	M8x1.0	2	-
	SK50AD/B-SFH10-160	P2761015	10	24	32	160	42	M8x1.0	2	2.00
	SK50AD/B-SFH10-200	P2771334A	10	24	32	200	42	M8x1.0	2	-
	SK50AD/B-SFH12-80	P2762010	12	24	32	80	47	M10x1.0	2	1.50
	SK50AD/B-SFH12-130	P2771335A	12	24	32	130	47	M10x1.0	2	-

- ▶ CAT(ASME B5.50) taper and Inch type products are available.
- ▶ Supplied without balancing screws.
- ▶ Balancing grade G2.5 at 25,000RPM or U max. < 1gmm.

▶ NEXT PAGE

**SHRINK FIT HOLDER**

SCHRUMPFUTTER  
MANDRIN DE FRETTAGE  
MADRINI PER CALLETAMENTO A CALDO  
PORTAHERRAMIENTAS DE COMPRESION POR CALOR



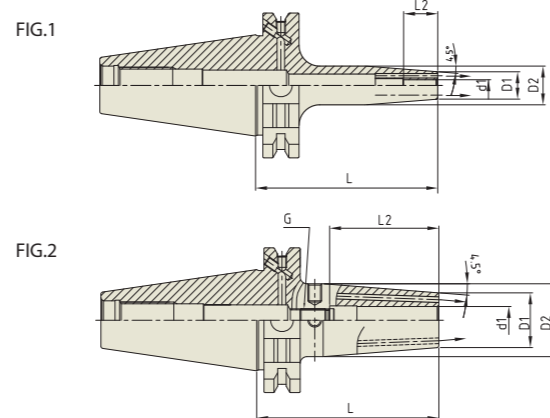
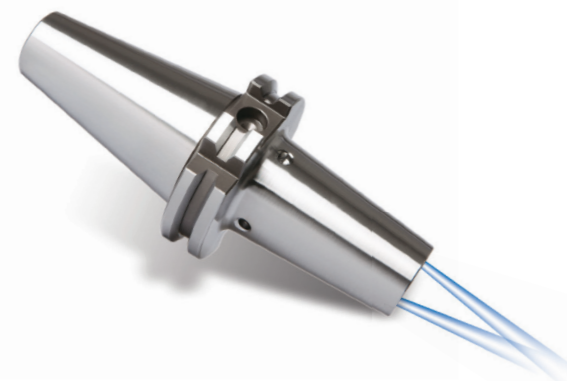
Unit : mm

TAPER No.	MODEL No.	EDP No.	d1	D1	D2	L	L2	G	FIG.	WEIGHT (Kg)
50	SK50AD/B-SFH12-160	P2762015	12	24	32	160	47	M10x1.0	2	2.00
	SK50AD/B-SFH12-200	P2771336A	12	24	32	200	47	M10x1.0	2	-
	SK50AD/B-SFH14-80	P2763010	14	27	34	80	47	M10x1.0	2	1.60
	SK50AD/B-SFH14-130	P2771337A	14	27	34	130	47	M10x1.0	2	-
	SK50AD/B-SFH14-160	P2763015	14	27	34	160	47	M10x1.0	2	2.10
	SK50AD/B-SFH14-200	P2771338A	14	27	34	200	47	M10x1.0	2	-
	SK50AD/B-SFH16-80	P2764010	16	27	34	80	50	M12x1.0	2	1.60
	SK50AD/B-SFH16-130	P2771339A	16	27	34	130	50	M12x1.0	2	-
	SK50AD/B-SFH16-160	P2764015	16	27	34	160	50	M12x1.0	2	2.10
	SK50AD/B-SFH16-200	P2771340A	16	27	34	200	50	M12x1.0	2	-
	SK50AD/B-SFH18-80	P2765010	18	33	42	80	50	M12x1.0	2	1.60
	SK50AD/B-SFH18-130	P2771341A	18	33	42	130	50	M12x1.0	2	-
	SK50AD/B-SFH18-160	P2765015	18	33	42	160	50	M12x1.0	2	2.00
	SK50AD/B-SFH18-200	P2771342A	18	33	42	200	50	M12x1.0	2	-
	SK50AD/B-SFH20-80	P2766010	20	33	42	80	52	M16x1.0	2	1.80
	SK50AD/B-SFH20-130	P2771343A	20	33	42	130	52	M16x1.0	2	-
	SK50AD/B-SFH20-160	P2766015	20	33	42	160	52	M16x1.0	2	2.20
	SK50AD/B-SFH20-200	P2771344A	20	33	42	200	52	M16x1.0	2	-
	SK50AD/B-SFH25-90	P2771330	25	44	53	90	58	M16x1.0	2	2.00
	SK50AD/B-SFH25-130	P2771345A	25	44	53	130	58	M16x1.0	2	-
SK50AD/B-SFH25-160	P2771331	25	44	53	160	58	M16x1.0	2	2.40	
SK50AD/B-SFH25-200	P2771346A	25	44	53	200	58	M16x1.0	2	-	

- ▶ CAT(ASME B5.50) taper and Inch type products are available.
- ▶ Supplied without balancing screws.
- ▶ Balancing grade G2.5 at 25,000RPM or U max. < 1gmm.

**SHRINK FIT HOLDER (COOLANT CHANNEL)**

SCHRUMPFUTTER  
MANDRIN DE FRETAGE  
MADRINI PER CALLETAMENTO A CALDO  
PORTAHERRAMIENTAS DE COMPRESION POR CALOR

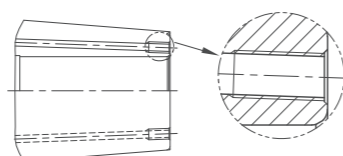


Unit : mm

TAPER No.	MODEL No.	EDP No.	d1	D1	D2	L	L2	G	FIG.	WEIGHT (Kg)
40	SK40AD/B-SFH3C-80*1	P2801337C	3	12	17	80	10	-	1	-
	SK40AD/B-SFH4C-80*1	P2801337C	4	12	17	80	12	-	1	-
	SK40AD/B-SFH5C-80*1	P2801340C	5	12	17	80	15	-	1	-
	SK40AD/B-SFH6C-80	P2801301C	6	21	27	80	36	M5x0.8	2	1.10
	SK40AD/B-SFH6C-130	P2801342C	6	21	27	130	36	M5x0.8	2	-
	SK40AD/B-SFH6C-160	P2801302C	6	21	27	160	36	M5x0.8	2	1.15
	SK40AD/B-SFH8C-80	P2801303C	8	21	27	80	36	M6x1.0	2	1.11
	SK40AD/B-SFH8C-130	P2801343C	8	21	27	130	36	M6x1.0	2	-
	SK40AD/B-SFH8C-160	P2801304C	8	21	27	160	36	M6x1.0	2	1.15
	SK40AD/B-SFH10C-80	P2801305C	10	24	32	80	42	M8x1.0	2	1.10
	SK40AD/B-SFH10C-130	P2801344C	10	24	32	130	42	M8x1.0	2	-
	SK40AD/B-SFH10C-160	P2801306C	10	24	32	160	42	M8x1.0	2	1.15
	SK40AD/B-SFH12C-80	P2801307C	12	24	32	80	47	M10x1.0	2	1.10
	SK40AD/B-SFH12C-130	P2801345C	12	24	32	130	47	M10x1.0	2	-
	SK40AD/B-SFH12C-160	P2801308C	12	24	32	160	47	M10x1.0	2	1.15
	SK40AD/B-SFH14C-80	P2801309C	14	27	34	80	47	M10x1.0	2	1.20
	SK40AD/B-SFH14C-130	P2801346C	14	27	34	130	47	M10x1.0	2	-
	SK40AD/B-SFH14C-160	P2801310C	14	27	34	160	47	M10x1.0	2	1.50
	SK40AD/B-SFH16C-80	P2801311C	16	27	34	80	50	M12x1.0	2	1.20
	SK40AD/B-SFH16C-130	P2801347C	16	27	34	130	50	M12x1.0	2	-
	SK40AD/B-SFH16C-160	P2801312C	16	27	34	160	50	M12x1.0	2	1.50
	SK40AD/B-SFH18C-80	P2801313C	18	33	42	80	50	M12x1.0	2	1.30
	SK40AD/B-SFH18C-130	P2801348C	18	33	42	130	50	M12x1.0	2	-
	SK40AD/B-SFH18C-160	P2801314C	18	33	42	160	50	M12x1.0	2	1.60
	SK40AD/B-SFH20C-80	P2801315C	20	33	42	80	52	M16x1.0	2	1.40
SK40AD/B-SFH20C-130	P2801349C	20	33	42	130	52	M16x1.0	2	-	
SK40AD/B-SFH20C-160	P2801316C	20	33	42	160	52	M16x1.0	2	1.70	
SK40AD/B-SFH25C-90	P2801317C	25	44	53	90	58	M16x1.0	2	1.70	
SK40AD/B-SFH25C-130	P2801350C	25	44	53	130	58	M16x1.0	2	-	
SK40AD/B-SFH25C-160	P2801318C	25	44	53	160	58	M16x1.0	2	2.00	

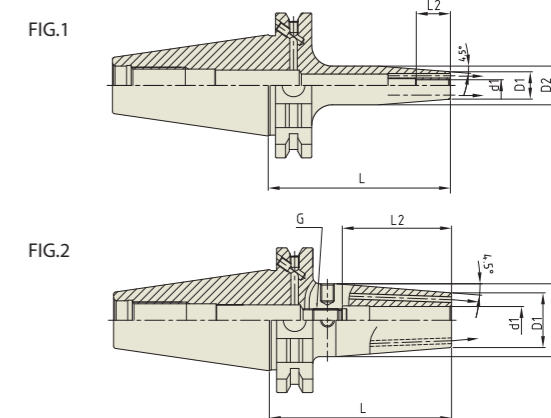
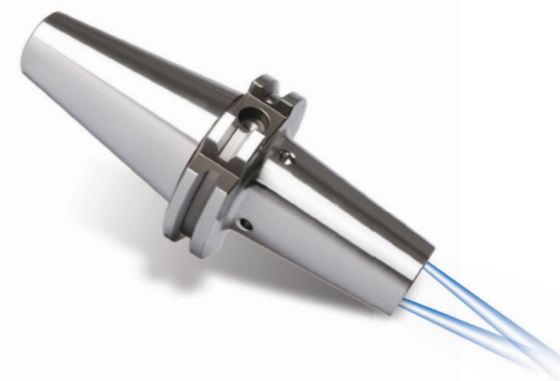
▶ NEXT PAGE

- ▶ CAT(ASME B5.50) taper and Inch type products are available.
- ▶ Supplied without balancing screws.
- ▶ Balancing grade G2.5 at 25,000RPM or U max. < 1gmm.
- ▶ With two coolant channel bores.
- ▶ Resealable coolant channel type is available upon request. (Thread for plugging screw & 2 screws)
- ▶ \*1 Resealable type is not available.



**SHRINK FIT HOLDER (COOLANT CHANNEL)**

SCHRUMPFUTTER  
MANDRIN DE FRETAGE  
MADRINI PER CALLETAMENTO A CALDO  
PORTAHERRAMIENTAS DE COMPRESION POR CALOR

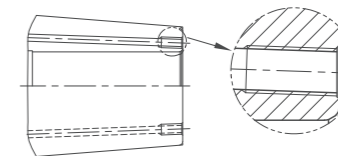


Unit : mm

TAPER No.	MODEL No.	EDP No.	d1	D1	D2	L	L2	G	FIG.	WEIGHT (Kg)
50	SK50AD/B-SFH3C-80*1	P2801338C	3	12	17	80	10	-	1	-
	SK50AD/B-SFH4C-80*1	P2801339C	4	12	17	80	12	-	1	-
	SK50AD/B-SFH5C-80*1	P2801341C	5	12	17	80	15	-	1	-
	SK50AD/B-SFH6C-80	P2801319C	6	21	27	80	36	M5x0.8	2	1.50
	SK50AD/B-SFH6C-130	P2801351C	6	21	27	130	36	M5x0.8	2	-
	SK50AD/B-SFH6C-160	P2801320C	6	21	27	160	36	M5x0.8	2	2.00
	SK50AD/B-SFH6C-200	P2801352C	6	21	27	200	36	M5x0.8	2	-
	SK50AD/B-SFH8C-80	P2801321C	8	21	27	80	36	M6x1.0	2	1.50
	SK50AD/B-SFH8C-130	P2801353C	8	21	27	130	36	M6x1.0	2	-
	SK50AD/B-SFH8C-160	P2801322C	8	21	27	160	36	M6x1.0	2	2.00
	SK50AD/B-SFH8C-200	P2801354C	8	21	27	200	36	M6x1.0	2	-
	SK50AD/B-SFH10C-80	P2801323C	10	24	32	80	42	M8x1.0	2	1.50
	SK50AD/B-SFH10C-130	P2801355C	10	24	32	130	42	M8x1.0	2	-
	SK50AD/B-SFH10C-160	P2801324C	10	24	32	160	42	M8x1.0	2	2.00
	SK50AD/B-SFH10C-200	P2801356C	10	24	32	200	42	M8x1.0	2	-
	SK50AD/B-SFH12C-80	P2801325C	12	24	32	80	47	M10x1.0	2	1.60
	SK50AD/B-SFH12C-130	P2801357C	12	24	32	130	47	M10x1.0	2	-
	SK50AD/B-SFH12C-160	P2801326C	12	24	32	160	47	M10x1.0	2	2.10
	SK50AD/B-SFH12C-200	P2801358C	12	24	32	200	47	M10x1.0	2	-
	SK50AD/B-SFH14C-80	P2801327C	14	27	34	80	47	M10x1.0	2	1.60
	SK50AD/B-SFH14C-130	P2801359C	14	27	34	130	47	M10x1.0	2	-
	SK50AD/B-SFH14C-160	P2801328C	14	27	34	160	47	M10x1.0	2	2.10
	SK50AD/B-SFH14C-200	P2801360C	14	27	34	200	47	M10x1.0	2	-
	SK50AD/B-SFH16C-80	P2801329C	16	27	34	80	50	M12x1.0	2	1.60
	SK50AD/B-SFH16C-130	P2801361C	16	27	34	130	50	M12x1.0	2	-
SK50AD/B-SFH16C-160	P2801330C	16	27	34	160	50	M12x1.0	2	2.10	
SK50AD/B-SFH16C-200	P2801362C	16	27	34	200	50	M12x1.0	2	-	

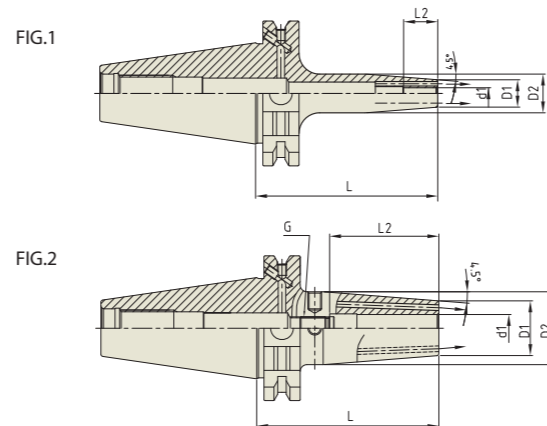
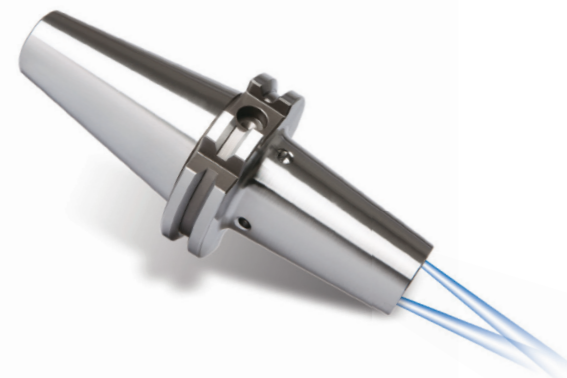
▶ NEXT PAGE

- ▶ CAT(ASME B5.50) taper and Inch type products are available.
- ▶ Supplied without balancing screws.
- ▶ Balancing grade G2.5 at 25,000RPM or U max. < 1gmm.
- ▶ With two coolant channel bores.
- ▶ Resealable coolant channel type is available upon request. (Thread for plugging screw & 2 screws)
- ▶ \*1 Resealable type is not available.



**SHRINK FIT HOLDER (COOLANT CHANNEL)**

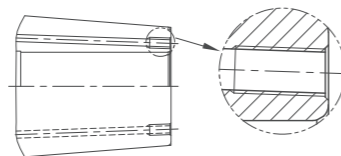
SCHRUMPFUTTER  
 MANDRIN DE FRETAGE  
 MADRINI PER CALLETAMENTO A CALDO  
 PORTAHERRAMIENTAS DE COMPRESION POR CALOR



Unit : mm

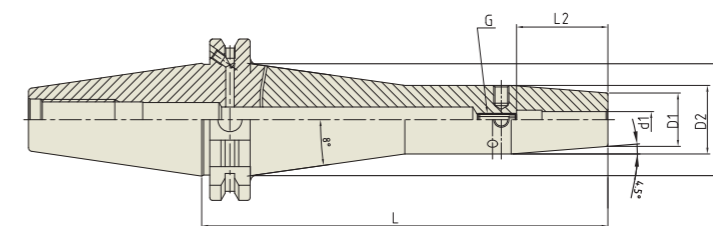
TAPER No.	MODEL No.	EDP No.	d1	D1	D2	L	L2	G	FIG.	WEIGHT (Kg)
50	SK50AD/B-SFH18C-80	P2801331C	18	33	42	80	50	M12x1.0	2	1.60
	SK50AD/B-SFH18C-130	P2801363C	18	33	42	130	50	M12x1.0	2	-
	SK50AD/B-SFH18C-160	P2801332C	18	33	42	160	50	M12x1.0	2	2.00
	SK50AD/B-SFH18C-200	P2801364C	18	33	42	200	50	M12x1.0	2	-
	SK50AD/B-SFH20C-80	P2801333C	20	33	42	80	52	M16x1.0	2	1.80
	SK50AD/B-SFH20C-130	P2801365C	20	33	42	130	52	M16x1.0	2	-
	SK50AD/B-SFH20C-160	P2801334C	20	33	42	160	52	M16x1.0	2	2.20
	SK50AD/B-SFH20C-200	P2801366C	20	33	42	200	52	M16x1.0	2	-
	SK50AD/B-SFH25C-90	P2801335C	25	44	53	90	58	M16x1.0	2	2.00
	SK50AD/B-SFH25C-130	P2801367C	25	44	53	130	58	M16x1.0	2	-
SK50AD/B-SFH25C-160	P2801336C	25	44	53	160	58	M16x1.0	2	2.40	
SK50AD/B-SFH25C-200	P2801368C	25	44	53	200	58	M16x1.0	2	-	

- ▶ CAT(ASME B5.50) taper and Inch type products are available.
- ▶ Supplied without balancing screws.
- ▶ Balancing grade G2.5 at 25,000RPM or U max. < 1gmm.
- ▶ With two coolant channel bores.
- ▶ Resealable coolant channel type is available upon request.  
(Thread for plugging screw & 2 screws)
- ▶ \*1 Resealable type is not available.



**SHRINK FIT HOLDER (REINFORCED)**

SCHRUMPFUTTER (VERSTÄRKT)  
 MANDRIN DE FRETAGE (RENFORCÉ)  
 MADRINI PER CALLETAMENTO A CALDO (RINFORZATO)  
 PORTAHERRAMIENTAS DE COMPRESION POR CALOR (REFORZADO)



Unit : mm

TAPER No.	MODEL No.	EDP No.	d1	D1	D2	D3	L	L2	G	WEIGHT (Kg)
40	SK40AD/B-SFH6 TW-160	P2801401TW	6	21	27	44.1	160	36	M5x0.8	1.56
	SK40AD/B-SFH8 TW-160	P2801402TW	8	21	27	44.1	160	36	M6x1.0	1.56
	SK40AD/B-SFH10 TW-160	P2801403TW	10	24	32	49.1	160	42	M8x1.0	1.78
	SK40AD/B-SFH12 TW-160	P2801404TW	12	24	32	49.1	160	47	M10x1.0	1.77
	SK40AD/B-SFH14 TW-160	P2801405TW	14	27	34	51.1	160	47	M10x1.0	1.74
	SK40AD/B-SFH16 TW-160	P2801406TW	16	27	34	51.1	160	50	M12x1.0	1.72
50	SK50AD/B-SFH6 TW-160	P2801407TW	6	21	27	44.1	160	36	M5x0.8	3.32
	SK50AD/B-SFH8 TW-160	P2801408TW	8	21	27	44.1	160	36	M6x1.0	3.32
	SK50AD/B-SFH10 TW-160	P2801409TW	10	24	32	49.1	160	42	M8x1.0	3.54
	SK50AD/B-SFH12 TW-160	P2801410TW	12	24	32	49.1	160	47	M10x1.0	3.54
	SK50AD/B-SFH14 TW-160	P2801411TW	14	27	34	51.1	160	47	M10x1.0	3.50
	SK50AD/B-SFH16 TW-160	P2801412TW	16	27	34	51.1	160	50	M12x1.0	3.48
SK50AD/B-SFH20 TW-160	P2801413TW	20	33	42	59.1	160	52	M16x1.0	3.88	

- ▶ CAT(ASME B5.50) taper and Inch type products are available.
- ▶ Supplied without balancing screws.
- ▶ Coolant channel type is available upon request.
- ▶ Balancing grade G2.5 at 25,000RPM or U max. < 1gmm.

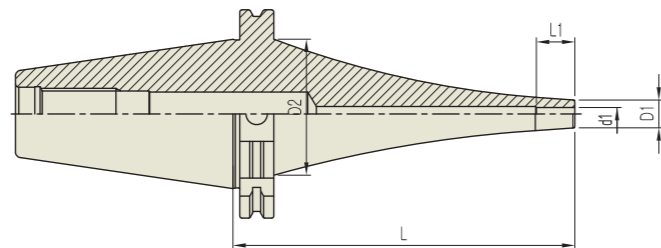


# YG SHRINK FIT HOLDER

SFH

## SHRINK FIT HOLDER (CURVED)

SCHRUMPFUTTER (GEBOGEN)  
 MANDRIN DE FRETTAGE (INCURVÉ)  
 MADRINI PER CALLETAMENTO A CALDO (CURVO)  
 PORTAHERRAMIENTAS DE COMPRESION POR CALOR (CURVADO)



Unit : mm								
TAPER No.	MODEL No.	EDP No.	d1	D1	D2	L	L2	WEIGHT (Kg)
50	SK50AD/B-SFH8CV-195	P2785067CV	8	16	70	195	24	-
	SK50AD/B-SFH10CV-165	P2785068CV	10	19	70	165	30	-
	SK50AD/B-SFH10CV-195	P2785069CV	10	19	70	195	30	-
	SK50AD/B-SFH12CV-165	P2785070CV	12	22	70	165	30	-
	SK50AD/B-SFH12CV-195	P2785071CV	12	22	70	195	30	-

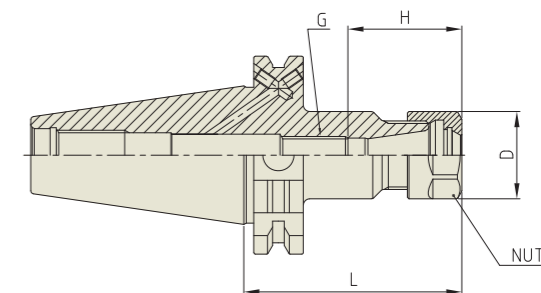
- ▶ CAT(ASME B5.50) taper and Inch type products are available.
- ▶ Supplied without balancing screws.
- ▶ Balancing grade G2.5 at 25,000RPM or U max. < 1gmm.

# YG ER COLLET CHUCK

ER

## ER COLLET CHUCK

SPANN FUTTER - ER  
 MANDRIN À PINCES - ER  
 MANDRINO PORTA PINZE - ER  
 PORTAPINZAS - ER



Unit : mm									
TAPER No.	MODEL No.	EDP No.	CLAMPING RANGE	L	D	G	H	NUT / COLLET	WEIGHT (Kg)
40	SK40AD/B-ER11-70	P2774812	0.5 - 7.0	70	19	M6	45	ER11	0.90
	SK40AD/B-ER11-100	P2774826	0.5 - 7.0	100	19	M6	45	ER11	0.95
	SK40AD/B-ER16-70	P2774801	0.5 - 10.0	70	28	M10	36	ER16	0.44
	SK40AD/B-ER16-100	P2774804	0.5 - 10.0	100	28	M10	36	ER16	0.56
	SK40AD/B-ER16-130	P2774827	0.5 - 10.0	130	28	M10	36	ER16	0.69
	SK40AD/B-ER16-160	P2774828	0.5 - 10.0	160	28	M10	36	ER16	0.81
	SK40AD/B-ER20-70	P2774813	0.5 - 13.0	70	34	M12	44.5	ER20	0.47
	SK40AD/B-ER20-100	P2774820	0.5 - 13.0	100	34	M12	44.5	ER20	0.64
	SK40AD/B-ER20-130	P2774829	0.5 - 13.0	130	34	M12	44.5	ER20	0.80
	SK40AD/B-ER20-160	P2774830	0.5 - 13.0	160	34	M12	44.5	ER20	1.00
	SK40AD/B-ER25-70	P2774802	1.0 - 16.0	70	42	M12	52	ER25	0.56
	SK40AD/B-ER25-100	P2774805	1.0 - 16.0	100	42	M12	52	ER25	0.84
	SK40AD/B-ER25-130	P2774831	1.0 - 16.0	130	42	M12	52	ER25	1.14
	SK40AD/B-ER25-160	P2774832	1.0 - 16.0	160	42	M12	52	ER25	1.44
	SK40AD/B-ER32-70	P2774803	1.0 - 20.0	70	50	M12	60	ER32	0.51
	SK40AD/B-ER32-100	P2774806	1.0 - 20.0	100	50	M12	60	ER32	0.88
	SK40AD/B-ER32-130	P2774833	1.0 - 20.0	130	50	M12	60	ER32	1.21
	SK40AD/B-ER32-160	P2774834	1.0 - 20.0	160	50	M12	60	ER32	1.54
	SK40AD/B-ER40-80	P2774814	2.0 - 30.0	80	63	M12	53	ER40	0.65
	SK40AD/B-ER40-100	P2774835	2.0 - 30.0	100	63	M12	75	ER40	0.90
SK40AD/B-ER40-130	P2774836	2.0 - 30.0	130	63	M12	75	ER40	1.34	
SK40AD/B-ER40-160	P2774837	2.0 - 30.0	160	63	M12	75	ER40	1.77	

- ▶ CAT(ASME B5.50) taper and Inch type products are available.
- ▶ Balancing grade G2.5 at 25,000RPM or U max. < 1gmm.
- ▶ For applicable ER collet, please refer to page D296~D304.
- ▶ For applicable ER nut, Sealing disk and Spanner, please refer to page D305~D309.

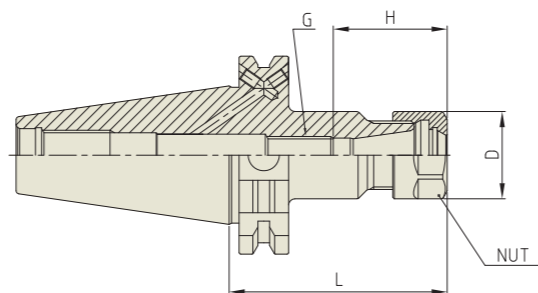
▶ NEXT PAGE

# ER COLLET CHUCK

ER

## ER COLLET CHUCK

SPANN FUTTER-ER  
MANDRIN À PINCES-ER  
MANDRINO PORTA PINZE-ER  
PORTAPINZAS-ER



TAPER No.	MODEL No.	EDP No.	CLAMPING RANGE	L	D	G	H	NUT / COLLET	WEIGHT (Kg)
50	SK50AD/B-ER16-70	P2774815	0.5 - 10.0	70	28	M10	36	ER16	2.71
	SK50AD/B-ER16-100	P2774821	0.5 - 10.0	100	28	M10	45	ER16	2.82
	SK50AD/B-ER16-130	P2774838	0.5 - 10.0	130	28	M10	36	ER16	2.92
	SK50AD/B-ER16-160	P2774839	0.5 - 10.0	160	28	M10	36	ER16	3.01
	SK50AD/B-ER20-70	P2774816	0.5 - 13.0	70	34	M12	44.5	ER20	2.78
	SK50AD/B-ER20-100	P2774822	0.5 - 13.0	100	34	M12	50	ER20	2.88
	SK50AD/B-ER20-130	P2774840	0.5 - 13.0	130	34	M12	50	ER20	3.02
	SK50AD/B-ER20-160	P2774841	0.5 - 13.0	160	34	M12	50	ER20	3.16
	SK50AD/B-ER25-70	P2774817	1.0 - 16.0	70	42	M12	65	ER25	2.75
	SK50AD/B-ER25-100	P2774823	1.0 - 16.0	100	42	M12	52	ER25	3.06
	SK50AD/B-ER25-130	P2774842	1.0 - 16.0	130	42	M12	42	ER25	3.32
	SK50AD/B-ER25-160	P2774843	1.0 - 16.0	160	42	M12	42	ER25	3.57
	SK50AD/B-ER32-70	P2774818	1.0 - 20.0	70	50	M12	60	ER32	2.84
	SK50AD/B-ER32-100	P2774824	1.0 - 20.0	100	50	M12	60	ER32	3.29
	SK50AD/B-ER32-130	P2774844	1.0 - 20.0	130	50	M12	73	ER32	3.67
	SK50AD/B-ER32-160	P2774845	1.0 - 20.0	160	50	M12	73	ER32	4.06
	SK50AD/B-ER40-80	P2774819	2.0 - 30.0	80	63	M12	69	ER40	3.10
	SK50AD/B-ER40-100	P2774825	2.0 - 30.0	100	63	M12	75	ER40	3.56
	SK50AD/B-ER40-130	P2774846	2.0 - 30.0	130	63	M12	75	ER40	4.22
	SK50AD/B-ER40-160	P2774847	2.0 - 30.0	160	63	M12	75	ER40	4.88

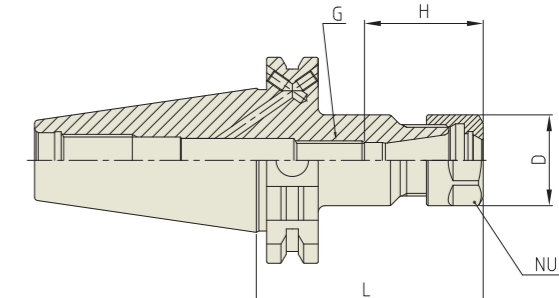
- ▶ CAT(ASME B5.50) taper and Inch type products are available.
- ▶ Balancing grade G2.5 at 25,000RPM or U max. < 1gmm.
- ▶ For applicable ER collet, please refer to page D296~D304.
- ▶ For applicable ER nut, Sealing disk and Spanner, please refer to page D305~D309.

# ER COLLET CHUCK

ER

## ER COLLET CHUCK

SPANN FUTTER-ER  
MANDRIN À PINCES-ER  
MANDRINO PORTA PINZE-ER  
PORTAPINZAS-ER



TAPER No.	MODEL No.	EDP No.	CLAMPING RANGE	L	D	G	H	NUT / COLLET	WEIGHT (Kg)
40	SK40AD/B-ER11-70	P2537006	0.5 - 7.0	70	19	M6	45	ER11	0.90
	SK40AD/B-ER11-100	P2771802	0.5 - 7.0	100	19	M6	45	ER11	0.95
	SK40AD/B-ER16-70	P2537033	0.5 - 10.0	70	28	M10	36	ER16	0.44
	SK40AD/B-ER16-100	P2537017	0.5 - 10.0	100	28	M10	36	ER16	0.56
	SK40AD/B-ER16-130	P2771803	0.5 - 10.0	130	28	M10	36	ER16	0.69
	SK40AD/B-ER16-160	P2771804	0.5 - 10.0	160	28	M10	36	ER16	0.81
	SK40AD/B-ER20-70	P2537034	0.5 - 13.0	70	34	M12	44.5	ER20	0.47
	SK40AD/B-ER20-100	P2537018	0.5 - 13.0	100	34	M12	44.5	ER20	0.64
	SK40AD/B-ER20-130	P2771805	0.5 - 13.0	130	34	M12	44.5	ER20	0.80
	SK40AD/B-ER20-160	P2771806	0.5 - 13.0	160	34	M12	44.5	ER20	1.00
	SK40AD/B-ER25-70	P2537009	1.0 - 16.0	70	42	M12	52	ER25	0.56
	SK40AD/B-ER25-100	P2537019	1.0 - 16.0	100	42	M12	52	ER25	0.84
	SK40AD/B-ER25-130	P2771807	1.0 - 16.0	130	42	M12	52	ER25	1.14
	SK40AD/B-ER25-160	P2771808	1.0 - 16.0	160	42	M12	52	ER25	1.44
	SK40AD/B-ER32-70	P2537032	1.0 - 20.0	70	50	M12	60	ER32	0.51
	SK40AD/B-ER32-100	P2537020	1.0 - 20.0	100	50	M12	60	ER32	0.88
	SK40AD/B-ER32-130	P2771809	1.0 - 20.0	130	50	M12	60	ER32	1.21
	SK40AD/B-ER32-160	P2771810	1.0 - 20.0	160	50	M12	60	ER32	1.54
	SK40AD/B-ER40-80	P2537011	2.0 - 30.0	80	63	M12	53	ER40	0.65
	SK40AD/B-ER40-100	P2771811	2.0 - 30.0	100	63	M12	75	ER40	0.90
SK40AD/B-ER40-130	P2771812	2.0 - 30.0	130	63	M12	75	ER40	1.34	
SK40AD/B-ER40-160	P2771813	2.0 - 30.0	160	63	M12	75	ER40	1.77	

- ▶ CAT(ASME B5.50) taper and Inch type products are available.
- ▶ For applicable ER collet, please refer to page D296~D304.
- ▶ For applicable ER nut, Sealing disk and Spanner, please refer to page D305~D309.

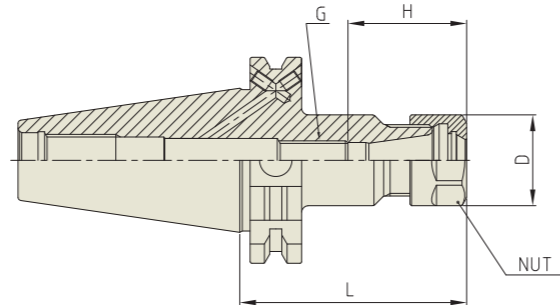
▶ NEXT PAGE

**YG ER COLLET CHUCK**

ER

**ER COLLET CHUCK**

SPANN FUTTER - ER  
MANDRIN À PINCES - ER  
MANDRINO PORTA PINZE - ER  
PORTAPINZAS - ER



TAPER No.	MODEL No.	EDP No.	CLAMPING RANGE	L	D	G	H	NUT / COLLET	WEIGHT (Kg)
50	SK50AD/B-ER16-70	P2537012	0.5 - 10.0	70	28	M10	36	ER16	2.71
	SK50AD/B-ER16-100	P2537021	0.5 - 10.0	100	28	M10	45	ER16	2.82
	SK50AD/B-ER16-130	P2771814	0.5 - 10.0	130	28	M10	36	ER16	2.92
	SK50AD/B-ER16-160	P2771815	0.5 - 10.0	160	28	M10	36	ER16	3.01
	SK50AD/B-ER20-70	P2771801	0.5 - 13.0	70	34	M12	44.5	ER20	2.78
	SK50AD/B-ER20-100	P2537022	0.5 - 13.0	100	34	M12	50	ER20	2.88
	SK50AD/B-ER20-130	P2771816	0.5 - 13.0	130	34	M12	50	ER20	3.02
	SK50AD/B-ER20-160	P2771817	0.5 - 13.0	160	34	M12	50	ER20	3.16
	SK50AD/B-ER25-70	P2600030	1.0 - 16.0	70	42	M12	65	ER25	2.75
	SK50AD/B-ER25-100	P2537023	1.0 - 16.0	100	42	M12	52	ER25	3.06
	SK50AD/B-ER25-130	P2771818	1.0 - 16.0	130	42	M12	42	ER25	3.32
	SK50AD/B-ER25-160	P2771819	1.0 - 16.0	160	42	M12	42	ER25	3.57
	SK50AD/B-ER32-70	P2537035	1.0 - 20.0	70	50	M12	60	ER32	2.84
	SK50AD/B-ER32-100	P2537024	1.0 - 20.0	100	50	M12	60	ER32	3.29
	SK50AD/B-ER32-130	P2771820	1.0 - 20.0	130	50	M12	73	ER32	3.67
	SK50AD/B-ER32-160	P2771821	1.0 - 20.0	160	50	M12	73	ER32	4.06
SK50AD/B-ER40-80	P2537016	2.0 - 30.0	80	63	M12	69	ER40	3.10	
SK50AD/B-ER40-100	P2537025	2.0 - 30.0	100	63	M12	75	ER40	3.56	
SK50AD/B-ER40-130	P2771822	2.0 - 30.0	130	63	M12	75	ER40	4.22	
SK50AD/B-ER40-160	P2771823	2.0 - 30.0	160	63	M12	75	ER40	4.88	

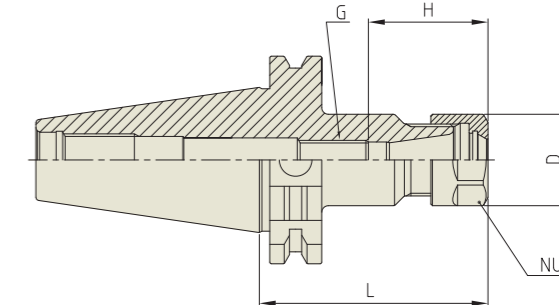
- ▶ CAT(ASME B5.50) taper and Inch type products are available.
- ▶ For applicable ER collet, please refer to page D296~D304.
- ▶ For applicable ER nut, Sealing disk and Spanner, please refer to page D305~D309.

**YG ER COLLET CHUCK**

ER

**ER COLLET CHUCK**

SPANN FUTTER - ER  
MANDRIN À PINCES - ER  
MANDRINO PORTA PINZE - ER  
PORTAPINZAS - ER



TAPER No.	MODEL No.	EDP No.	CLAMPING RANGE	L	D	G	H	NUT / COLLET	WEIGHT (Kg)
30	SK30-ER11-55	P2527001	0.5 - 7.0	55	19	M6	45	ER11	0.43
	SK30-ER16-55	P2527002	0.5 - 10.0	55	28	M10	45	ER16	0.44
	SK30-ER20-55	P2527003	0.5 - 13.0	55	34	M12	50	ER20	0.44
	SK30-ER25-55	P2527004	1.0 - 16.0	55	42	M12	65	ER25	0.42
	SK30-ER32-60	P2527005	1.0 - 20.0	60	50	M12	65	ER32	0.46
	SK40-ER11-70	P2527006	0.5 - 7.0	70	19	M6	45	ER11	0.90
40	SK40-ER11-100	P2527027	0.5 - 7.0	100	19	M6	45	ER11	0.95
	SK40-ER16-70	P2776417	0.5 - 10.0	70	28	M10	45	ER16	0.44
	SK40-ER16-100	P2527018	0.5 - 10.0	100	28	M10	45	ER16	0.56
	SK40-ER16-130	P2527028	0.5 - 10.0	130	28	M10	45	ER16	0.69
	SK40-ER16-160	P2527029	0.5 - 10.0	160	28	M10	45	ER16	0.81
	SK40-ER20-70	P2776418	0.5 - 13.0	70	34	M12	50	ER20	0.47
	SK40-ER20-100	P2527019	0.5 - 13.0	100	34	M12	50	ER20	0.64
	SK40-ER20-130	P2527030	0.5 - 13.0	130	34	M12	50	ER20	0.80
	SK40-ER20-160	P2527031	0.5 - 13.0	160	34	M12	50	ER20	1.00
	SK40-ER25-70	P2776419	1.0 - 16.0	70	42	M12	65	ER25	0.56
	SK40-ER25-100	P2776429	1.0 - 16.0	100	42	M12	65	ER25	0.84
	SK40-ER25-130	P2527032	1.0 - 16.0	130	42	M12	65	ER25	1.14
	SK40-ER25-160	P2527033	1.0 - 16.0	160	42	M12	65	ER25	1.44
	SK40-ER32-70	P2776420	1.0 - 20.0	70	50	M12	65	ER32	0.51
	SK40-ER32-100	P2776430	1.0 - 20.0	100	50	M12	65	ER32	0.88
	SK40-ER32-130	P2527034	1.0 - 20.0	130	50	M12	65	ER32	1.21
	SK40-ER32-160	P2527035	1.0 - 20.0	160	50	M12	65	ER32	1.54
	SK40-ER40-80	P2527011	2.0 - 30.0	80	63	M12	69	ER40	0.65
	SK40-ER40-100	P2527036	2.0 - 30.0	100	63	M12	69	ER40	0.90
	SK40-ER40-130	P2527037	2.0 - 30.0	130	63	M12	69	ER40	1.34
	SK40-ER40-160	P2527038	2.0 - 30.0	160	63	M12	69	ER40	1.77

- ▶ CAT(ASME B5.50) taper and Inch type products are available.
- ▶ For applicable ER collet, please refer to page D296~D304.
- ▶ For applicable ER nut, Sealing disk and Spanner, please refer to page D305~D309.

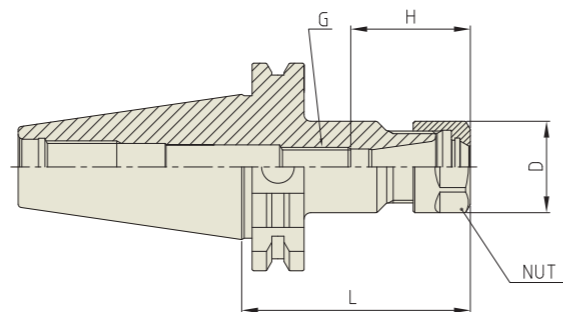
▶ NEXT PAGE

**YG ER COLLET CHUCK**

ER

**ER COLLET CHUCK**

SPANN FUTTER - ER  
MANDRIN À PINCES - ER  
MANDRINO PORTA PINZE - ER  
PORTAPINZAS - ER



Unit : mm									
TAPER No.	MODEL No.	EDP No.	CLAMPING RANGE	L	D	G	H	NUT / COLLET	WEIGHT (Kg)
50	SK50-ER16-70	P2527012	0.5 - 10.0	70	28	M10	45	ER16	2.71
	SK50-ER16-100	P2527022	0.5 - 10.0	100	28	M10	45	ER16	2.82
	SK50-ER16-130	P2527039	0.5 - 10.0	130	28	M10	45	ER16	2.92
	SK50-ER16-160	P2527040	0.5 - 10.0	160	28	M10	45	ER16	3.01
	SK50-ER20-70	P2776423	0.5 - 13.0	70	34	M12	50	ER20	2.78
	SK50-ER20-100	P2527023	0.5 - 13.0	100	34	M12	40.5	ER20	2.88
	SK50-ER20-130	P2527041	0.5 - 13.0	130	34	M12	50	ER20	3.02
	SK50-ER20-160	P2527042	0.5 - 13.0	160	34	M12	50	ER20	3.16
	SK50-ER25-70	P2776424	1.0 - 16.0	70	42	M12	65	ER25	2.75
	SK50-ER25-100	P2527024	1.0 - 16.0	100	42	M12	65	ER25	3.06
	SK50-ER25-130	P2527043	1.0 - 16.0	130	42	M12	65	ER25	3.32
	SK50-ER25-160	P2527044	1.0 - 16.0	160	42	M12	65	ER25	3.57
	SK50-ER32-70	P2776425	1.0 - 20.0	70	50	M12	65	ER32	2.84
	SK50-ER32-100	P2527025	1.0 - 20.0	100	50	M12	65	ER32	3.29
	SK50-ER32-130	P2527045	1.0 - 20.0	130	50	M12	65	ER32	3.67
	SK50-ER32-160	P2527046	1.0 - 20.0	160	50	M12	65	ER32	4.06
	SK50-ER40-80	P2527016	2.0 - 30.0	80	63	M12	75	ER40	3.10
	SK50-ER40-100	P2527026	2.0 - 30.0	100	63	M12	75	ER40	3.56
	SK50-ER40-130	P2527047	2.0 - 30.0	130	63	M12	75	ER40	4.22
	SK50-ER40-160	P2527048	2.0 - 30.0	160	63	M12	75	ER40	4.88

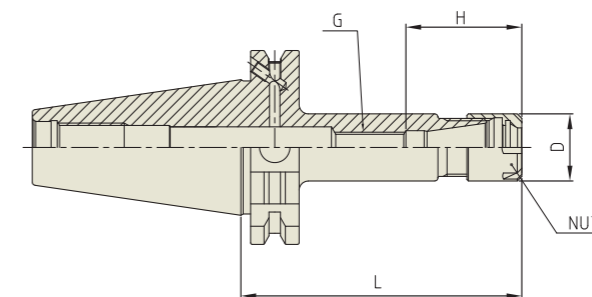
- ▶ CAT(ASME B5.50) taper and Inch type products are available.
- ▶ For applicable ER collet, please refer to page D296~D304.
- ▶ For applicable ER nut, Sealing disk and Spanner, please refer to page D305~D309.

**YG ER COLLET CHUCK**

ER

**ER COLLET CHUCK (SLIM)**

SPANN FUTTER - ER  
MANDRIN À PINCES - ER  
MANDRINO PORTA PINZE - ER  
PORTAPINZAS - ER



Unit : mm									
TAPER No.	MODEL No.	EDP No.	CLAMPING RANGE	L	D	G	H	NUT / COLLET	WEIGHT (Kg)
40	SK40AD/B-ER11M-100	P2802640	0.5 - 7.0	100	16	M6	29.5	ER11M / ER11	-
	SK40AD/B-ER11M-130	P2802641	0.5 - 7.0	130	16	M6	29.5	ER11M / ER11	-
	SK40AD/B-ER11M-160	P2802642	0.5 - 7.0	160	16	M6	29.5	ER11M / ER11	-
	SK40AD/B-ER16M-100	P2802643	0.5 - 10.0	100	22	M10	38	ER16M / ER16	-
	SK40AD/B-ER16M-130	P2802644	0.5 - 10.0	130	22	M10	38	ER16M / ER16	-
	SK40AD/B-ER16M-160	P2802645	0.5 - 10.0	160	22	M10	38	ER16M / ER16	-
	SK40AD/B-ER20M-100	P2802646	0.5 - 13.0	100	28	M12	44.5	ER20M / ER20	-
	SK40AD/B-ER20M-130	P2802647	0.5 - 13.0	130	28	M12	44.5	ER20M / ER20	-
	SK40AD/B-ER20M-160	P2802648	0.5 - 13.0	160	28	M12	44.5	ER20M / ER20	-
	SK40AD/B-ER25M-100	P2802649	0.5 - 16.0	100	35	M12	52	ER25M / ER25	-
	SK40AD/B-ER25M-130	P2802650	0.5 - 16.0	130	35	M12	52	ER25M / ER25	-
	SK40AD/B-ER25M-160	P2802651	0.5 - 16.0	160	35	M12	52	ER25M / ER25	-
	SK50AD/B-ER16M-100	P2802652	0.5 - 10.0	100	22	M10	38	ER16M / ER16	-
	SK50AD/B-ER16M-130	P2802653	0.5 - 10.0	130	22	M10	38	ER16M / ER16	-
SK50AD/B-ER16M-160	P2802654	0.5 - 10.0	160	22	M10	38	ER16M / ER16	-	
SK50AD/B-ER20M-100	P2802655	0.5 - 13.0	100	28	M12	44.5	ER20M / ER20	-	
SK50AD/B-ER20M-130	P2802656	0.5 - 13.0	130	28	M12	44.5	ER20M / ER20	-	
SK50AD/B-ER20M-160	P2802657	0.5 - 13.0	160	28	M12	44.5	ER20M / ER20	-	
SK50AD/B-ER25M-100	P2802658	0.5 - 16.0	100	35	M12	52	ER25M / ER25	-	
SK50AD/B-ER25M-130	P2802659	0.5 - 16.0	130	35	M12	52	ER25M / ER25	-	
SK50AD/B-ER25M-160	P2802660	0.5 - 16.0	160	35	M12	52	ER25M / ER25	-	

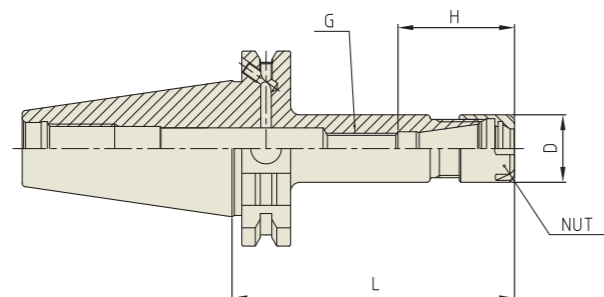
- ▶ CAT(ASME B5.50) taper and Inch type products are available.
- ▶ Balancing grade G2.5 at 25,000RPM or U max. < 1gmm.
- ▶ For applicable ER collet, please refer to page D296~D304.
- ▶ For applicable ER nut, Sealing disk and Spanner, please refer to page D307 & D309.

# ER COLLET CHUCK

ER

## ER COLLET CHUCK (SLIM)

SPANN FUTTER - ER  
MANDRIN À PINCES - ER  
MANDRINO PORTA PINZE - ER  
PORTAPINZAS - ER



Unit : mm									
TAPER No.	MODEL No.	EDP No.	CLAMPING RANGE	L	D	G	H	NUT / COLLET	WEIGHT (Kg)
40	SK40AD/B-ER11M-100	P2802661	0.5 - 7.0	100	16	M6	29.5	ER11M / ER11	-
	SK40AD/B-ER11M-130	P2802662	0.5 - 7.0	130	16	M6	29.5	ER11M / ER11	-
	SK40AD/B-ER11M-160	P2802663	0.5 - 7.0	160	16	M6	29.5	ER11M / ER11	-
	SK40AD/B-ER16M-100	P2802664	0.5 - 10.0	100	22	M10	38	ER16M / ER16	-
	SK40AD/B-ER16M-130	P2802665	0.5 - 10.0	130	22	M10	38	ER16M / ER16	-
	SK40AD/B-ER16M-160	P2802666	0.5 - 10.0	160	22	M10	38	ER16M / ER16	-
	SK40AD/B-ER20M-100	P2802667	0.5 - 13.0	100	28	M12	44.5	ER20M / ER20	-
	SK40AD/B-ER20M-130	P2802668	0.5 - 13.0	130	28	M12	44.5	ER20M / ER20	-
	SK40AD/B-ER20M-160	P2802669	0.5 - 13.0	160	28	M12	44.5	ER20M / ER20	-
	SK40AD/B-ER25M-100	P2802670	0.5 - 16.0	100	35	M12	52	ER25M / ER25	-
	SK40AD/B-ER25M-130	P2802671	0.5 - 16.0	130	35	M12	52	ER25M / ER25	-
	SK40AD/B-ER25M-160	P2802672	0.5 - 16.0	160	35	M12	52	ER25M / ER25	-
50	SK50AD/B-ER16M-100	P2802673	0.5 - 10.0	100	22	M10	38	ER16M / ER16	-
	SK50AD/B-ER16M-130	P2802674	0.5 - 10.0	130	22	M10	38	ER16M / ER16	-
	SK50AD/B-ER16M-160	P2802675	0.5 - 10.0	160	22	M10	38	ER16M / ER16	-
	SK50AD/B-ER20M-100	P2802676	0.5 - 13.0	100	28	M12	44.5	ER20M / ER20	-
	SK50AD/B-ER20M-130	P2802677	0.5 - 13.0	130	28	M12	44.5	ER20M / ER20	-
	SK50AD/B-ER20M-160	P2802678	0.5 - 13.0	160	28	M12	44.5	ER20M / ER20	-
	SK50AD/B-ER25M-100	P2802679	0.5 - 16.0	100	35	M12	52	ER25M / ER25	-
	SK50AD/B-ER25M-130	P2802680	0.5 - 16.0	130	35	M12	52	ER25M / ER25	-
	SK50AD/B-ER25M-160	P2802681	0.5 - 16.0	160	35	M12	52	ER25M / ER25	-

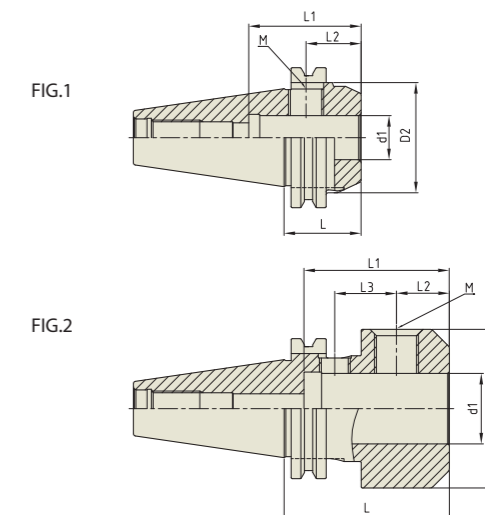
- ▶ CAT(ASME B5.50) taper and Inch type products are available.
- ▶ For applicable ER collet, please refer to page D296~D304.
- ▶ For applicable ER nut, Sealing disk and Spanner, please refer to page D307 & D309.

# END MILL HOLDER

EMH

## END MILL HOLDER (SHORT TYPE)

FRÄSERFUTTER UND FLÄCHENSPANNFUTTER  
MANDRIN PORTE FRAISE À QUEUE CYLINDRIQUE, À MÉPLAT  
MANDRINI PORTA FRESA TIPO WELDON  
PORTAFRESAS Y EJES DE SUJECCION LATERAL

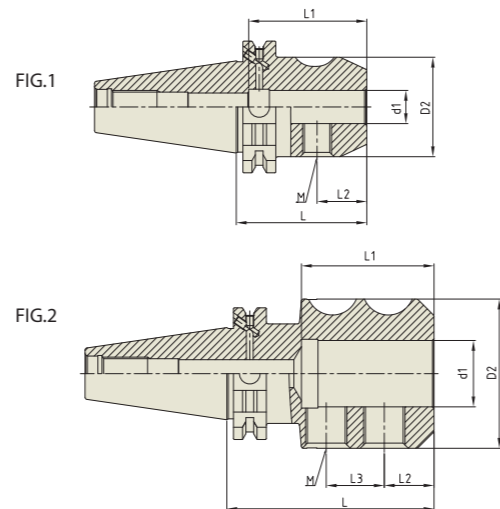


Unit : mm											
TAPER No.	MODEL No.	EDP No.	d1	D2	L	L1	L2	L3	M	FIG.	WEIGHT (Kg)
40	SK40-EMH16-35	P2521001	16	48	35	51	24	-	M14	1	0.80
	SK40-EMH20-35	P2521027	20	50	35	51	25	-	M16	1	0.90
	SK40-EMH25-60	P2521003	25	50	60	59	24	25	M18 / M14	2	1.20
	SK40-EMH32-75	P2521030	32	72	75	66	24	28	M20 / M14	2	1.80
50	SK50-EMH25-60	P2521031	25	65	60	60	23.5	25.4	M18 / M14	2	3.35
	SK50-EMH32-60	P2521032	32	72	60	63	24	24.9	M20 / M14	2	3.50

- ▶ CAT(ASME B5.50) taper and Inch type products are available.

**END MILL HOLDER**

FRÄSERFUTTER UND FLÄCHENSPANNFUTTER  
 MANDRIN PORTE FRAISE À QUEUE CYLINDRIQUE, À MÉPLAT  
 MANDRINI PORTA FRESA TIPO WELDON  
 PORTAFRESAS Y EJES DE SUJECCION LATERAL



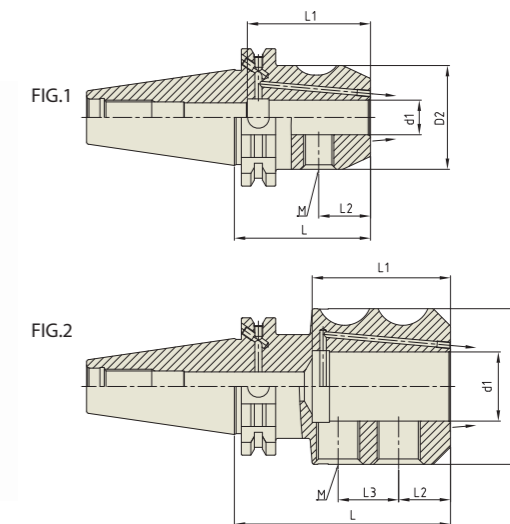
Unit : mm

TAPER No.	MODEL No.	EDP No.	d1	D2	L	L1	L2	L3	M	FIG.	WEIGHT (Kg)
30	SK30-EMH6-50	P2779025A	6	25	50	35	18	-	M6	1	0.73
	SK30-EMH8-50	P2779026A	8	28	50	35	18	-	M8	1	0.83
	SK30-EMH10-50	P2779027A	10	35	50	42	20	-	M10	1	0.90
	SK30-EMH12-50	P2779028A	12	42	50	47	22.5	-	M12	1	0.90
	SK30-EMH16-63	P2779029A	16	48	63	50	24	-	M14	1	1.10
40	SK40AD/B-EMH6-50	P2779030	6	25	50	35	18	-	M6	1	0.86
	SK40AD/B-EMH8-50	P2779031	8	28	50	35	18	-	M8	1	0.89
	SK40AD/B-EMH10-50	P2779032	10	35	50	39	20	-	M10	1	0.95
	SK40AD/B-EMH12-50	P2779033	12	42	50	46	22.5	-	M12	1	1.03
	SK40AD/B-EMH16-63	P2779034	16	48	63	57	24	-	M14	1	1.26
	SK40AD/B-EMH20-63	P2779035	20	52	63	54	25	-	M16	1	1.28
	SK40AD/B-EMH25-100	P2779036	25	65	100	60	24	25	M18	2	2.28
	SK40AD/B-EMH32-100	P2779037	32	72	100	64	24	28	M20	2	2.50
50	SK50AD/B-EMH6-63	P2779038	6	25	63	35	18	-	M6	1	2.70
	SK50AD/B-EMH8-63	P2779039	8	28	63	35	18	-	M8	1	2.70
	SK50AD/B-EMH10-63	P2779040	10	35	63	39	20	-	M10	1	2.90
	SK50AD/B-EMH12-63	P2779041	12	42	63	46	22.5	-	M12	1	2.90
	SK50AD/B-EMH16-63	P2779042	16	48	63	49	24	-	M14	1	3.00
	SK50AD/B-EMH20-63	P2779043	20	52	63	52	25	-	M16	1	3.05
	SK50AD/B-EMH25-80	P2779044	25	65	80	60	24	25	M18	2	3.73
	SK50AD/B-EMH32-100	P2779045	32	72	100	64	24	28	M20	2	4.53
	SK50AD/B-EMH40-100	P2779046	40	80	100	74	30	32	M20	2	4.77
	SK50AD/B-EMH50-125	P2779047	50	100	125	84	35	35	M24	2	7.03

- ▶ CAT(ASME B5.50) taper and Inch type products are available.
- ▶ Standard End Mill Holder is for a cutting tool with Weldon shank and End Mill Holder for a cutting tool with Whistle notch is available upon request.
- ▶ Combi-style Holder with ball jointed clamping screw which can be used with cutting tools with Weldon and Whistle notch shank is available.
- ▶ Balancing grade G2.5 at 25,000RPM or U max. < 1gmm.

**END MILL HOLDER (COOLANT CHANNEL)**

FRÄSERFUTTER UND FLÄCHENSPANNFUTTER  
 MANDRIN PORTE FRAISE À QUEUE CYLINDRIQUE, À MÉPLAT  
 MANDRINI PORTA FRESA TIPO WELDON  
 PORTAFRESAS Y EJES DE SUJECCION LATERAL



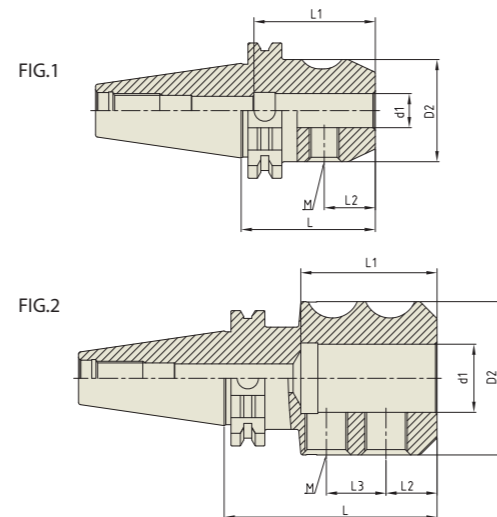
Unit : mm

TAPER No.	MODEL No.	EDP No.	d1	D2	L	L1	L2	L3	M	FIG.	WEIGHT (Kg)	
40	SK40AD/B-EMH6C-50	P2779048	6	25	50	35	18	-	M6	1	0.86	
	SK40AD/B-EMH8C-50	P2779049	8	28	50	35	18	-	M8	1	0.89	
	SK40AD/B-EMH10C-50	P2779050	10	35	50	39	20	-	M10	1	0.95	
	SK40AD/B-EMH12C-50	P2779051	12	42	50	36	22.5	-	M12	1	1.03	
	SK40AD/B-EMH14C-50	P2779052	14	44	50	48	22.5	-	M12	1	1.26	
	SK40AD/B-EMH16C-63	P2779053	16	48	63	54	24	-	M14	1	1.28	
	SK40AD/B-EMH18C-63	P2779054	18	50	63	54	24	-	M14	1	1.35	
	SK40AD/B-EMH20C-63	P2779055	20	52	63	54	25	-	M16	1	1.28	
	SK40AD/B-EMH25C-100	P2779056	25	65	100	55	24	25	M18	2	2.28	
	SK40AD/B-EMH32C-100	P2779057	32	72	100	69	24	28	M20	2	2.50	
	50	SK50AD/B-EMH6C-63	P2779058	6	25	63	35	18	-	M6	1	2.70
		SK50AD/B-EMH8C-63	P2779059	8	28	63	35	18	-	M8	1	2.70
SK50AD/B-EMH10C-63		P2779060	10	35	63	39	20	-	M10	1	2.90	
SK50AD/B-EMH12C-63		P2779061	12	42	63	46	22.5	-	M12	1	2.90	
SK50AD/B-EMH14C-63		P2779062	14	44	63	46	22.5	-	M12	1	2.90	
SK50AD/B-EMH16C-63		P2779063	16	48	63	46	24	-	M14	1	3.00	
SK50AD/B-EMH18C-63		P2779064	18	50	63	46	24	-	M14	1	3.00	
SK50AD/B-EMH20C-63		P2779065	20	52	63	56	25	-	M16	1	3.05	
SK50AD/B-EMH25C-80		P2779066	25	65	80	60	24	25	M18	2	3.73	
SK50AD/B-EMH32C-100		P2779067	32	72	100	64	24	28	M20	2	4.53	
SK50AD/B-EMH40C-120		P2779068	40	80	120	74	30	32	M20	2	4.77	
SK50AD/B-EMH50C-125		P2779069	50	100	125	84	35	35	M24	2	7.03	

- ▶ CAT(ASME B5.50) taper and Inch type products are available.
- ▶ Standard End Mill Holder is for a cutting tool with Weldon shank and End Mill Holder for a cutting tool with Whistle notch is available upon request.
- ▶ Combi-style Holder with ball jointed clamping screw which can be used with cutting tools with Weldon and Whistle notch shank is available.
- ▶ Balancing grade G2.5 at 25,000RPM or U max. < 1gmm.

**END MILL HOLDER**

FRÄSERFUTTER UND FLÄCHENSPANNFUTTER  
 MANDRIN PORTE FRAISE À QUEUE CYLINDRIQUE, À MÉPLAT  
 MANDRINI PORTA FRESA TIPO WELDON  
 PORTAFRESAS Y EJES DE SUJECCION LATERAL



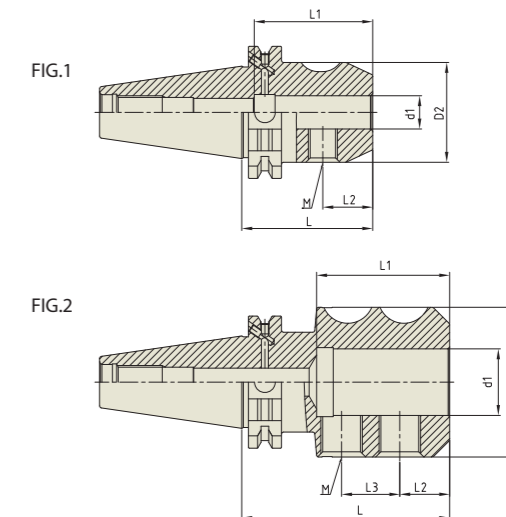
Unit : mm

TAPER No.	MODEL No.	EDP No.	d1	D2	L	L1	L2	L3	M	FIG.	WEIGHT (Kg)
30	SK30-EMH6-50	P2779025A	6	25	50	35	18	-	M6	1	0.73
	SK30-EMH8-50	P2779026A	8	28	50	35	18	-	M8	1	0.83
	SK30-EMH10-50	P2779027A	10	35	50	42	20	-	M10	1	0.90
	SK30-EMH12-50	P2779028A	12	42	50	47	22.5	-	M12	1	0.90
	SK30-EMH16-63	P2779029A	16	48	63	50	24	-	M14	1	1.10
40	SK40-EMH6-50	P2779030	6	25	50	35	18	-	M6	1	0.86
	SK40-EMH8-50	P2779031	8	28	50	35	18	-	M8	1	0.89
	SK40-EMH10-50	P2779032	10	35	50	39	20	-	M10	1	0.95
	SK40-EMH12-50	P2779033	12	42	50	46	22.5	-	M12	1	1.03
	SK40-EMH16-63	P2779034	16	48	63	57	24	-	M14	1	1.26
	SK40-EMH20-63	P2779035	20	52	63	54	25	-	M16	1	1.28
	SK40-EMH25-100	P2779036	25	65	100	60	24	25	M18	2	2.28
50	SK40-EMH32-100	P2779037	32	72	100	64	24	28	M20	2	2.50
	SK50-EMH6-63	P2779038	6	25	63	35	18	-	M6	1	2.70
	SK50-EMH8-63	P2779039	8	28	63	35	18	-	M8	1	2.70
	SK50-EMH10-63	P2779040	10	35	63	39	20	-	M10	1	2.90
	SK50-EMH12-63	P2779041	12	42	63	46	22.5	-	M12	1	2.90
	SK50-EMH16-63	P2779042	16	48	63	49	24	-	M14	1	3.00
	SK50-EMH20-63	P2779043	20	52	63	52	25	-	M16	1	3.05
	SK50-EMH25-80	P2779044	25	65	80	60	24	25	M18	2	3.73
	SK50-EMH32-100	P2779045	32	72	100	64	24	28	M20	2	4.53
	SK50-EMH40-100	P2779046	40	80	100	74	30	32	M20	2	4.77
	SK50-EMH50-125	P2779047	50	100	125	84	35	35	M24	2	7.03

- ▶ CAT(ASME B5.50) taper and Inch type products are available.
- ▶ Standard End Mill Holder is for a cutting tool with Weldon shank and End Mill Holder for a cutting tool with Whistle notch is available upon request.
- ▶ Combi-style Holder with ball jointed clamping screw which can be used with cutting tools with Weldon and Whistle notch shank is available.

**END MILL HOLDER**

FRÄSERFUTTER UND FLÄCHENSPANNFUTTER  
 MANDRIN PORTE FRAISE À QUEUE CYLINDRIQUE, À MÉPLAT  
 MANDRINI PORTA FRESA TIPO WELDON  
 PORTAFRESAS Y EJES DE SUJECCION LATERAL



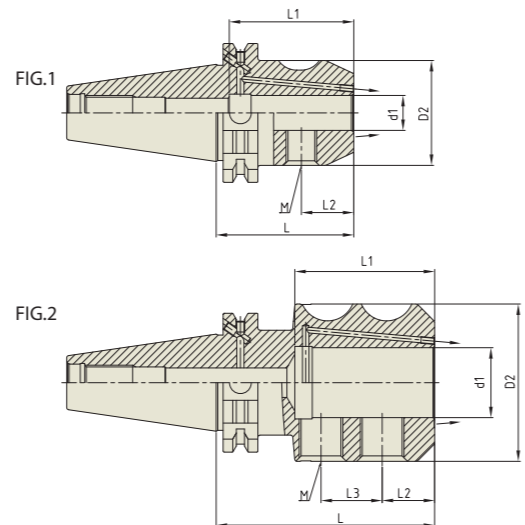
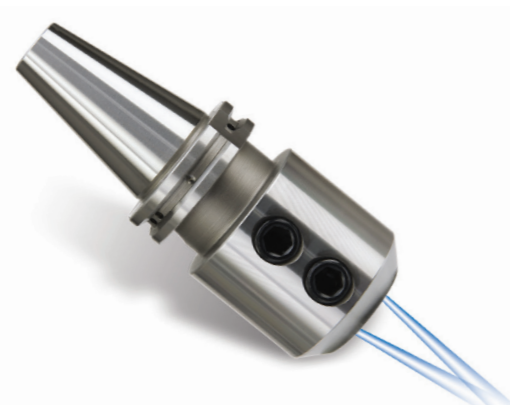
Unit : mm

TAPER No.	MODEL No.	EDP No.	d1	D2	L	L1	L2	L3	M	FIG.	WEIGHT (Kg)
40	SK40AD/B-EMH6-50	P2531009	6	25	50	35	18	-	M6	1	0.86
	SK40AD/B-EMH8-50	P2531010	8	28	50	35	18	-	M8	1	0.89
	SK40AD/B-EMH10-50	P2531011	10	35	50	39	20	-	M10	1	0.95
	SK40AD/B-EMH12-50	P2531012	12	42	50	46	22.5	-	M12	1	1.03
	SK40AD/B-EMH16-63	P2531013	16	48	63	57	24	-	M14	1	1.28
	SK40AD/B-EMH20-63	P2531014	20	52	63	54	25	-	M16	1	1.28
	SK40AD/B-EMH25-100	P2531015	25	65	100	60	24	25	M18	2	2.28
	SK40AD/B-EMH32-100	P2531016	32	72	100	64	24	28	M20	2	2.50
	50	SK50AD/B-EMH6-63	P2531017	6	25	63	35	18	-	M6	1
SK50AD/B-EMH8-63		P2531018	8	28	63	35	18	-	M8	1	2.70
SK50AD/B-EMH10-63		P2531019	10	35	63	39	20	-	M10	1	2.90
SK50AD/B-EMH12-63		P2531020	12	42	63	44	22.5	-	M12	1	2.90
SK50AD/B-EMH16-63		P2531021	16	48	63	47	24	-	M14	1	3.00
SK50AD/B-EMH20-63		P2531022	20	52	63	51	25	-	M16	1	3.05
SK50AD/B-EMH25-80		P2531023	25	65	80	60	24	25	M18	2	3.73
SK50AD/B-EMH32-100		P2531024	32	72	100	64	24	28	M20	2	4.53
SK50AD/B-EMH40-100		P2531025	40	80	100	74	30	32	M20	2	4.77
SK50AD/B-EMH50-125	P2531026	50	100	125	84	35	35	M24	2	7.03	

- ▶ CAT(ASME B5.50) taper and Inch type products are available.
- ▶ Standard End Mill Holder is for a cutting tool with Weldon shank and End Mill Holder for a cutting tool with Whistle notch is available upon request.
- ▶ Combi-style Holder with ball jointed clamping screw which can be used with cutting tools with Weldon and Whistle notch shank is available.

**END MILL HOLDER (COOLANT CHANNEL)**

FRÄSERFUTTER UND FLÄCHENSPIANNFUTTER  
 MANDRIN PORTE FRAISE À QUEUE CYLINDRIQUE, À MÉPLAT  
 MANDRINI PORTA FRESA TIPO WELDON  
 PORTAFRESAS Y EJES DE SUJECCION LATERAL

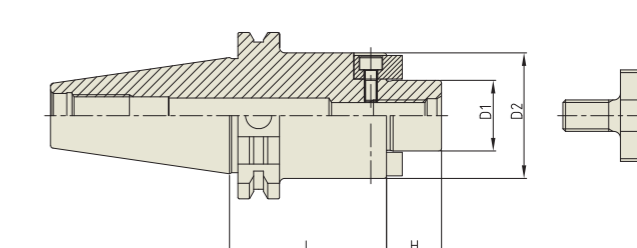


Unit : mm												
TAPER No.	MODEL No.	EDP No.	d1	D2	L	L1	L2	L3	M	FIG.	WEIGHT (Kg)	
40	SK40AD/B-EMH6C-50	P2779048	6	25	50	35	18	-	M6	1	0.86	
	SK40AD/B-EMH8C-50	P2779049	8	28	50	35	18	-	M8	1	0.89	
	SK40AD/B-EMH10C-50	P2779050	10	35	50	39	20	-	M10	1	0.95	
	SK40AD/B-EMH12C-50	P2779051	12	42	50	46	22.5	-	M12	1	1.03	
	SK40AD/B-EMH14C-50	P2779052	14	44	50	48	22.5	-	M12	1	1.26	
	SK40AD/B-EMH16C-63	P2779053	16	48	63	54	24	-	M14	1	1.28	
	SK40AD/B-EMH18C-63	P2779054	18	50	63	54	24	-	M14	1	1.35	
	SK40AD/B-EMH20C-63	P2779055	20	52	63	55	25	-	M16	1	1.28	
	SK40AD/B-EMH25C-100	P2779056	25	65	100	59	24	25	M18	2	2.28	
	SK40AD/B-EMH32C-100	P2779057	32	72	100	64	24	28	M20	2	2.50	
	50	SK50AD/B-EMH6C-63	P2779058	6	25	63	35	18	-	M6	1	2.70
		SK50AD/B-EMH8C-63	P2779059	8	28	63	35	18	-	M8	1	2.70
SK50AD/B-EMH10C-63		P2779060	10	35	63	39	20	-	M10	1	2.90	
SK50AD/B-EMH12C-63		P2779061	12	42	63	46	22.5	-	M12	1	2.90	
SK50AD/B-EMH14C-63		P2779062	14	44	63	46	22.5	-	M12	1	2.90	
SK50AD/B-EMH16C-63		P2779063	16	48	63	46	24	-	M14	1	3.00	
SK50AD/B-EMH18C-63		P2779064	18	50	63	46	24	-	M14	1	3.00	
SK50AD/B-EMH20C-63		P2779065	20	52	63	56	25	-	M16	1	3.05	
SK50AD/B-EMH25C-80		P2779066	25	65	80	60	24	25	M18	2	3.73	
SK50AD/B-EMH32C-100		P2779067	32	72	100	64	24	28	M20	2	4.53	
SK50AD/B-EMH40C-120		P2779068	40	80	120	74	30	32	M20	2	4.77	
SK50AD/B-EMH50C-125		P2779069	50	100	125	84	35	35	M24	2	7.03	

- ▶ CAT(ASME B5.50) taper and Inch type products are available.
- ▶ Standard End Mill Holder is for a cutting tool with Weldon shank and End Mill Holder for a cutting tool with Whistle notch is available upon request.
- ▶ Combi-style Holder with ball jointed clamping screw which can be used with cutting tools with Weldon and Whistle notch shank is available.

**SHELL MILL ARBOR**

AUFNAHMEDORN FÜR FRÄSER MIT BOHRUNG  
 MANDRIN PORTE-FRAISES  
 MANDRINO CON TRASCINAMENTO FISSO  
 PORTA FRESAS



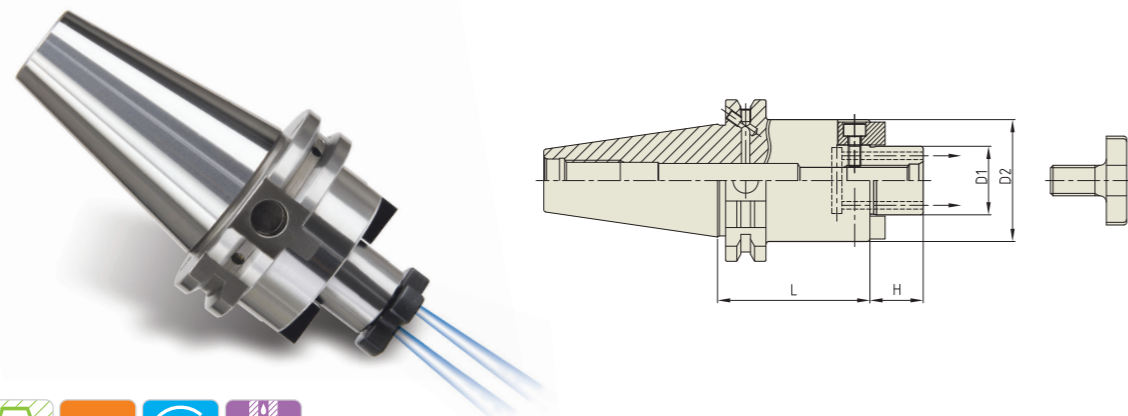
Unit : mm								
TAPER No.	MODEL No.	EDP No.	D1	D2	L	H	BOLT	WEIGHT (Kg)
30	SK30-SMA16-50	P2778901	16	32	50	17	M8x16L	0.85
	SK30-SMA22-50	P2778902	22	40	50	19	M10x18L	0.90
	SK30-SMA27-50	P2778903	27	48	50	21	M12x22L	1.03
40	SK40-SMA16-60	P2778904	16	32	60	17	M8x16L	0.35
	SK40-SMA16-120	P2778915	16	32	120	17	M8x16L	1.70
	SK40-SMA22-60	P2778905	22	40	60	19	M10x18L	1.45
	SK40-SMA22-120	P2778916	22	40	120	19	M10x18L	1.80
	SK40-SMA27-60	P2778906	27	48	60	21	M12x22L	1.70
	SK40-SMA27-120	P2778917	27	48	120	21	M12x22L	2.40
	SK40-SMA32-60	P2778907	32	58	60	24	M16x26L	1.80
	SK40-SMA32-120	P2778918	32	58	120	24	M16x26L	3.70
	SK40-SMA40-60	P2778908	40	70	60	27	M20x30L	3.10
	50	SK50-SMA16-75	P2778909	16	32	75	17	M8x16L
SK50-SMA16-120		P2778919	16	32	120	17	M8x16L	3.90
SK50-SMA22-75		P2778910	22	40	75	19	M10x18L	3.10
SK50-SMA22-120		P2778920	22	40	120	19	M10x18L	4.40
SK50-SMA27-75		P2778911	27	48	75	21	M12x22L	3.40
SK50-SMA27-120		P2778921	27	48	120	21	M12x22L	4.70
SK50-SMA32-75		P2778912	32	58	75	24	M16x26L	3.80
SK50-SMA32-120		P2778922	32	58	120	24	M16x26L	5.00
SK50-SMA40-75		P2778913	40	70	75	27	M20x30L	4.50
SK50-SMA40-120		P2778923	40	70	120	27	M20x30L	6.05
SK50-SMA50-75		P2778914	50	90	75	30	M24x36L	5.90

- ▶ CAT(ASME B5.50) taper and Inch type products are available.
- ▶ For parts, please refer to page D307.



**SHELL MILL ARBOR (COOLANT CHANNEL & SMALL FACE)**

AUFNAHMEDORN FÜR FRÄSER MIT BOHRUNG  
 MANDRIN PORTE-FRAISES  
 MANDRINO CON TRASCINAMENTO FISSO  
 PORTA FRESAS



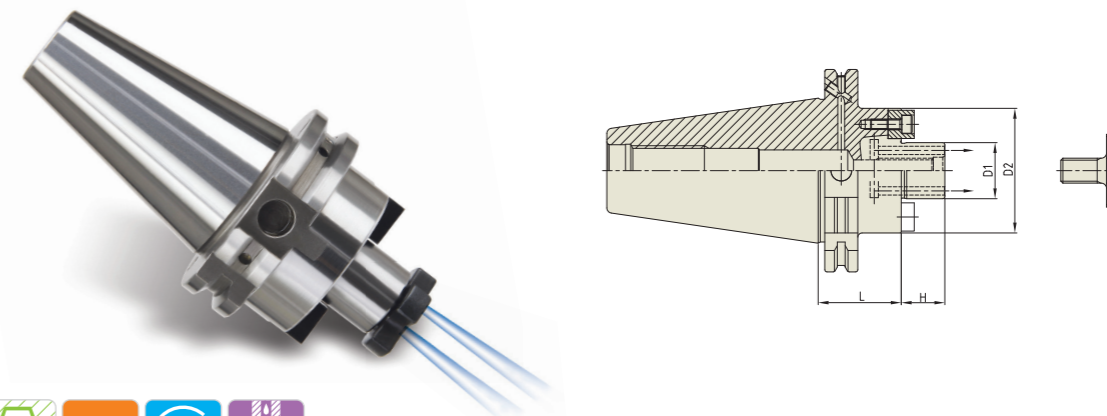
Unit : mm

TAPER No.	MODEL No.	EDP No.	D1	D2	L	H	BOLT	WEIGHT (Kg)
40	SK40AD/B-SMA16C-60	P2801004C	16	32	60	17	M8x16L	0.35
	SK40AD/B-SMA16C-120	P2801015C	16	32	120	17	M8x16L	0.70
	SK40AD/B-SMA22C-44	P2803003C	22	40	44	19	M10x18L	1.03
	SK40AD/B-SMA22C-100	P2803004C	22	40	100	19	M10x18L	1.60
	SK40AD/B-SMA22C-120	P2801016C	22	40	120	19	M10x18L	1.90
	SK40AD/B-SMA27C-44	P2803006C	27	48	44	21	M12x22L	1.16
	SK40AD/B-SMA27C-100	P2803007C	27	48	100	21	M12x22L	1.97
	SK40AD/B-SMA27C-120	P2801017C	27	48	120	21	M12x22L	2.23
	SK40AD/B-SMA32C-60	P2801007C	32	58	60	24	M16x26L	1.64
	SK40AD/B-SMA32C-120	P2801018C	32	58	120	24	M16x26L	2.00
	SK40AD/B-SMA40C-60	P2803011C	40	70	60	27	M20x30L	1.83
	SK40AD/B-SMA40C-120	P2803012C	40	70	120	27	M20x30L	2.10
50	SK50AD/B-SMA16C-75	P2801009C	16	32	75	17	M8x16L	2.20
	SK50AD/B-SMA16C-120	P2801019C	16	32	120	17	M8x16L	2.50
	SK50AD/B-SMA22C-44	P2803015C	22	40	44	19	M10x18L	2.84
	SK50AD/B-SMA22C-75	P2801010C	22	40	75	19	M10x18L	3.10
	SK50AD/B-SMA22C-100	P2803017C	22	40	100	19	M10x18L	3.37
	SK50AD/B-SMA22C-120	P2801020C	22	40	120	19	M10x18L	3.60
	SK50AD/B-SMA22C-160	P2803019C	22	40	160	19	M10x18L	3.93
	SK50AD/B-SMA27C-75	P2801011C	27	48	75	21	M12x22L	3.40
	SK50AD/B-SMA27C-100	P2803021C	27	48	100	21	M12x22L	3.74
	SK50AD/B-SMA27C-120	P2801021C	27	48	120	21	M12x22L	4.00
	SK50AD/B-SMA27C-160	P2803023C	27	48	160	21	M12x22L	4.42
	SK50AD/B-SMA32C-75	P2801012C	32	58	75	24	M16x26L	3.80
	SK50AD/B-SMA32C-100	P2803025C	32	58	100	24	M16x26L	4.28
	SK50AD/B-SMA32C-120	P2801022C	32	58	120	24	M16x26L	4.40
	SK50AD/B-SMA32C-160	P2803027C	32	58	160	24	M16x26L	5.45
	SK50AD/B-SMA40C-75	P2801013C	40	70	75	27	M20x30L	4.50
	SK50AD/B-SMA40C-100	P2803029C	40	70	100	27	M20x30L	5.11
	SK50AD/B-SMA40C-120	P2801023C	40	70	120	27	M20x30L	5.30
SK50AD/B-SMA40C-160	P2803031C	40	70	160	27	M20x30L	6.78	

- ▶ CAT(ASME B5.50) taper and Inch type products are available.
- ▶ With "Coolant Through" by coolant channels.
- ▶ For parts, please refer to page D311.

**SHELL MILL ARBOR (COOLANT CHANNEL & LARGE FACE)**

AUFNAHMEDORN FÜR FRÄSER MIT BOHRUNG  
 MANDRIN PORTE-FRAISES  
 MANDRINO CON TRASCINAMENTO FISSO  
 PORTA FRESAS



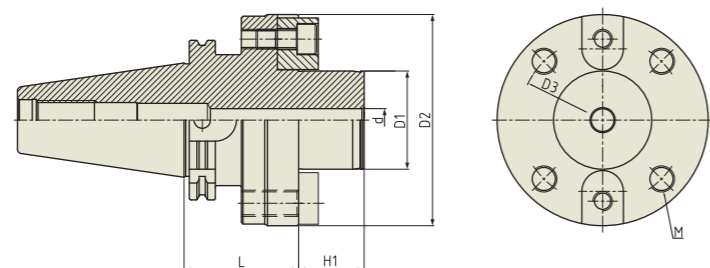
Unit : mm

TAPER No.	MODEL No.	EDP No.	D1	D2	L	H	BOLT	WEIGHT (Kg)
40	SK40AD/B-SMA16CE-35	P2803101CE	16	38	35	17	M8x16L	0.94
	SK40AD/B-SMA16CE-100	P2803102CE	16	38	100	17	M8x16L	1.50
	SK40AD/B-SMA22CE-35	P2803103CE	22	48	35	19	M10x18L	1.05
	SK40AD/B-SMA22CE-100	P2803104CE	22	48	100	19	M10x18L	1.95
	SK40AD/B-SMA27CE-45	P2803105CE	27	60	45	21	M12x22L	1.33
	SK40AD/B-SMA27CE-100	P2803106CE	27	60	100	21	M12x22L	2.59
	SK40AD/B-SMA32CE-50	P2803107CE	32	78	50	24	M16x26L	1.72
	SK40AD/B-SMA40CE-50	P2803108CE	40	89	50	27	M20x30L	1.99
	SK50AD/B-SMA16CE-100	P2803109CE	16	38	100	17	M8x16L	3.27
	SK50AD/B-SMA22CE-35	P2803110CE	22	48	35	19	M10x18L	2.83
	SK50AD/B-SMA22CE-100	P2803111CE	22	48	100	19	M10x18L	3.72
	SK50AD/B-SMA22CE-160	P2803112CE	22	48	160	19	M10x18L	4.54
50	SK50AD/B-SMA27CE-40	P2803113CE	27	60	40	21	M12x22L	3.09
	SK50AD/B-SMA27CE-100	P2803114CE	27	60	100	21	M12x22L	4.35
	SK50AD/B-SMA27CE-160	P2803115CE	27	60	160	21	M12x22L	5.62
	SK50AD/B-SMA32CE-50	P2803116CE	32	78	50	24	M16x26L	3.82
	SK50AD/B-SMA32CE-100	P2803117CE	32	78	100	24	M16x26L	5.64
	SK50AD/B-SMA32CE-160	P2803118CE	32	78	160	24	M16x26L	7.81
	SK50AD/B-SMA40CE-50	P2803119CE	40	89	50	27	M20x30L	4.27
	SK50AD/B-SMA40CE-100	P2803120CE	40	89	100	27	M20x30L	6.61
	SK50AD/B-SMA40CE-160	P2803121CE	40	89	160	27	M20x30L	9.43

- ▶ CAT(ASME B5.50) taper and Inch type products are available.
- ▶ With "Coolant Through" by coolant channels.
- ▶ For parts, please refer to page D311.

**SHELL MILL ARBOR (FLANGE MOUNTING)**

AUFNAHMEDORN FÜR FRÄSER MIT BOHRUNG  
 MANDRIN PORTE-FRAISES  
 MANDRINO CON TRASCINAMENTO FISSO  
 PORTA FRESAS



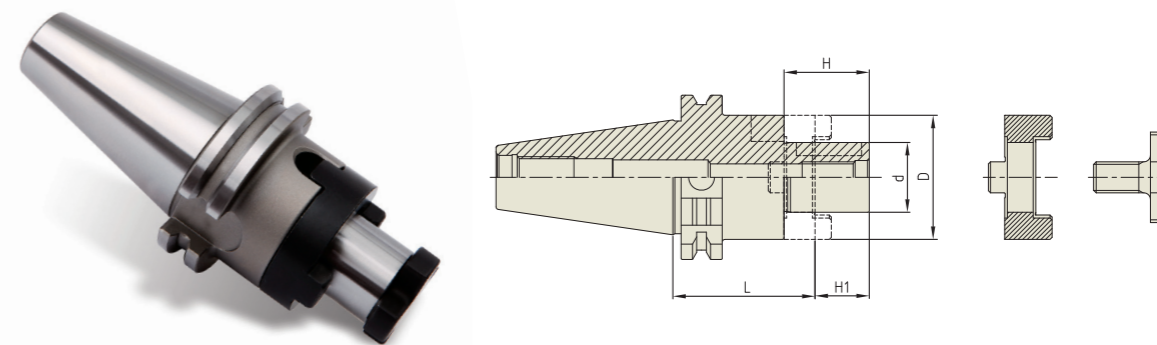
Unit : mm

TAPER No.	MODEL No.	EDP No.	d	D1	D2	D3	L	H1	M (TAP)	DRIVE KEY & BOLT	WEIGHT (Kg)
50	SK50-SMF40-70	P2524024	14	40	89	66.7	70	30	4-M12	15.9 x 16 x 21.5, M6-15L	-
	SK50-SMF60-70	P2800061	14	60	129	101.6	70	40	4-M16	25.4 x 25.4 x 31.5, M12-25L	-

▶ CAT(ASME B5.50) taper and Inch type products are available.

**COMBI-SHELL MILL ARBOR**

KOMBI-AUFNAHMEDORN FÜR FRÄSER MIT BOHRUNG  
 MANDRIN PORTE-FRAISES COMBINÉS  
 MANDRINO PORTA FRESE  
 PORTA FRESAS COMBINADO



Unit : mm

TAPER No.	MODEL No.	EDP No.	d	L	D	H1	H	WEIGHT (Kg)
30	SK30-CMA16-50	P2524001	16	50	32	17	27	0.58
	SK30-CMA22-50	P2524002	22	50	40	19	31	0.71
	SK30-CMA27-55	P2524003	27	55	48	21	33	0.78
40	SK40-CMA16-55	P2524004	16	55	32	17	27	1.03
	SK40-CMA16-100	P2524015	16	100	32	17	27	1.27
	SK40-CMA22-55	P2524005	22	55	40	19	31	1.17
	SK40-CMA22-100	P2524016	22	100	40	19	31	1.59
	SK40-CMA27-55	P2524006	27	55	48	21	33	1.37
	SK40-CMA27-100	P2524017	27	100	48	21	33	1.94
	SK40-CMA32-60	P2524007	32	60	58	24	38	1.6
	SK40-CMA32-100	P2524018	32	100	58	24	38	2.40
50	SK40-CMA40-60	P2524008	40	60	70	27	41	2.31
	SK50-CMA16-55	P2524009	16	55	32	17	27	2.81
	SK50-CMA16-100	P2524019	16	100	32	17	27	3.07
	SK50-CMA22-55	P2524010	22	55	40	19	31	2.91
	SK50-CMA22-100	P2524020	22	100	40	19	31	3.38
	SK50-CMA27-55	P2524011	27	55	48	21	33	3.15
	SK50-CMA27-100	P2524021	27	100	48	21	33	3.76
	SK50-CMA32-55	P2524012	32	55	58	24	38	3.41
	SK50-CMA32-100	P2524022	32	100	58	24	38	4.23
	SK50-CMA40-55	P2524013	40	55	70	27	41	3.78
SK50-CMA40-100	P2524023	40	100	70	27	41	5.06	
	SK50-CMA50-70	P2524014	50	70	90	30	46	5.35

▶ CAT(ASME B5.50) taper and Inch type products are available.

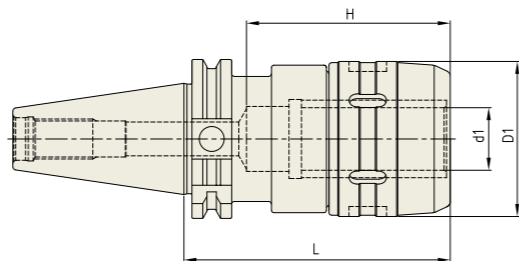
▶ For parts, please refer to page D312.

**YG POWER MILLING CHUCK**

**C**

**HIGH-SPEED POWER MILLING CHUCK**

HOCHGESCHWINDIGKEITS FRÄSERFUTTER  
 MANDRIN PORTE FRAISE À GRANDE VITESSE  
 MANDRINI PORTA FRESA PER ALTA VELOCITÀ  
 PORTAHERRAMIENTAS PARA FRESADO DE ALTA VELOCIDAD



Unit : mm

TAPER No.	MODEL No.	EDP No.	d1	D1	L	H	WEIGHT (Kg)
30	SK30-C20-80HS	P2773005	20	54	80	70	1.15
	SK30-C25-80HS	P2773006	25	62	70	80	1.48
40	SK40-C20-105HS	P2526022	20	54	105	70	1.77
	SK40-C25-105HS	P2773001	25	62	105	80	2.10
	SK40-C32-105HS	P2526023	32	72	105	100	2.40
	SK40-C32-135HS	P2773007	32	72	135	100	3.10
50	SK50-C20-105HS	P2773002	20	54	105	70	3.40
	SK50-C25-105HS	P2773003	25	62	105	80	3.80
	SK50-C32-105HS	P2773004	32	72	105	100	4.30
	SK50-C32-135HS	P2526024	32	72	135	100	4.90
	SK50-C32-165HS	P2526025	32	72	165	100	5.60
	SK50-C42-115HS	P2773008	42	92	115	110	4.60
	SK50-C42-135HS	P2773009	42	92	135	110	5.60
	SK50-C42-165HS	P2773010	42	92	165	110	6.10

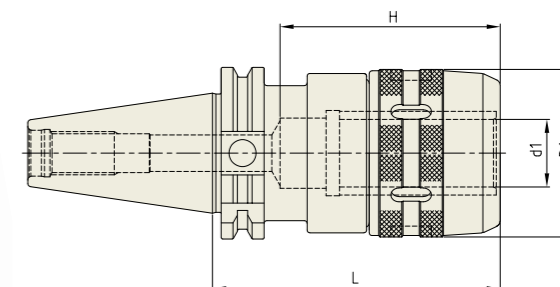
- ▶ CAT(ASME B5.50) taper and Inch type products are available.
- ▶ Balancing Grade is adjusted on Basic holder only without Clamping Cap.
- ▶ For applicable collet and spanner, please refer to page D314.

**YG POWER MILLING CHUCK**

**C**

**POWER MILLING CHUCK**

FRÄSERSPANNFUTTER  
 MANDRIN PORTE FRAISE  
 MANDRINI PORTA FRESA  
 PORTAHERRAMIENTAS PARA FRESADO



Unit : mm

TAPER No.	MODEL No.	EDP No.	d1	D1	L	H	WEIGHT (Kg)
30	SK30-C20-80	P2526001	20	54	80	70	1.15
	SK30-C25-80	P2526002	25	62	80	80	1.48
40	SK40-C20-90	P2526003	20	54	90	70	1.60
	SK40-C20-105	P2526008	20	54	105	70	1.77
	SK40-C25-105	P2526009	25	62	105	80	2.01
	SK40-C32-90	P2526004	32	72	90	100	2.00
	SK40-C32-105	P2526010	32	72	105	100	2.42
	SK40-C32-135	P2526015	32	72	135	100	3.11
50	SK50-C20-80	P2526005	20	54	80	70	3.22
	SK50-C20-105	P2526011	20	54	105	70	3.39
	SK50-C25-90	P2526006	25	62	90	80	3.61
	SK50-C25-105	P2526012	25	62	105	80	3.78
	SK50-C32-90	P2526007	32	72	90	100	3.87
	SK50-C32-105	P2526013	32	72	105	100	4.31
	SK50-C32-135	P2526018	32	72	135	100	4.94
	SK50-C32-165	P2526020	32	72	165	100	5.59
	SK50-C42-115	P2526014	42	92	115	110	4.53
	SK50-C42-135	P2526017	42	92	135	110	5.62
	SK50-C42-165	P2526016	42	92	165	110	6.10

- ▶ CAT(ASME B5.50) taper and Inch type products are available.
- ▶ For applicable collet and spanner, please refer to the page D314.

SK (DIN 69871)

CBT (BT DUAL CONTACT)

BT (JIS B6339/ MAS 403)

HSK (DIN 69893/ ISO 12164)

STRAIGHT

ISO, NT, MTA/MTB, GOST

TOOL HOLDER SET

BORING SYSTEM

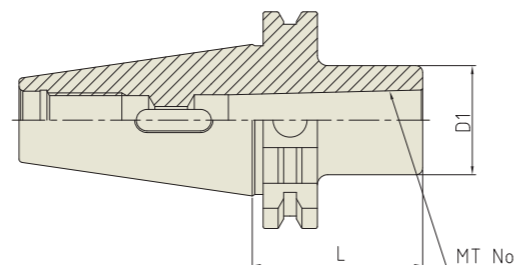
ACCESSORY & PARTS

**YIG MORSE TAPER ARBOR**

**MTA**

**MORSE TAPER ARBOR**

EINSATZHÜLSEN FÜR MORSEKEGEL  
DOUILLES DE RÉDUCTION CÔNE MORSE  
MANDRINO RIDUZIONE CONO MORSE  
REDUCTORES A MORSE



Unit : mm						
TAPER No.	MODEL No.	EDP No.	MT No.	D1	L	WEIGHT (Kg)
30	SK30-MTA1-50	P2522001	1	25	50	0.72
	SK30-MTA2-60	P2522002	2	32	60	0.87
	SK30-MTA3-80	P2522003	3	40	80	1.02
40	SK40-MTA1-50	P2522004	1	25	50	1.49
	SK40-MTA2-50	P2522005	2	32	50	1.62
	SK40-MTA3-70	P2522006	3	40	70	1.65
	SK40-MTA4-95	P2522007	4	48	95	1.90
50	SK50-MTA1-45	P2522008	1	25	45	2.60
	SK50-MTA2-60	P2522009	2	32	60	2.66
	SK50-MTA3-65	P2522010	3	40	65	2.75
	SK50-MTA4-95	P2522011	4	48	95	3.00
	SK50-MTA5-105	P2522012	5	63	105	3.30

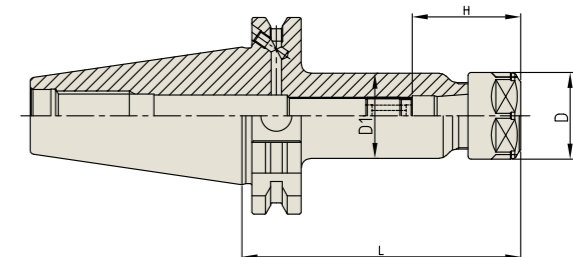
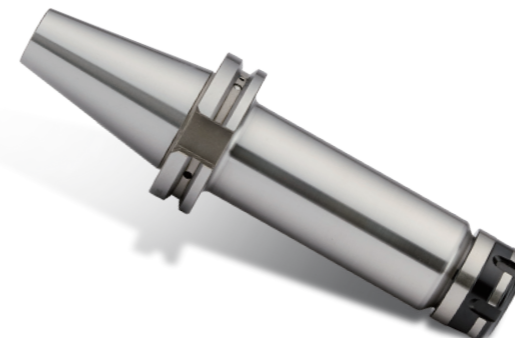
► CAT(ASME B5.50) taper and Inch type products are available.

**YIG SK SLIM CHUCK**

**SKA**

**SK SLIM CHUCK**

SK SCHLANKE FUTTER  
MANDRIN TYPE SK MINCE  
SK MANDRINI SOTTILI  
PORTAHERRAMIENTAS SK EJE REDUCIDO



Unit : mm									
TAPER No.	MODEL No.	EDP No.	CLAMPING RANGE	L	D	D1	H	COLLET	WEIGHT (Kg)
40	SK40AD/B-SKA06-60	P2802901	1.8 - 6.0	60	20	19.5	31	SKC6	-
	SK40AD/B-SKA06-90	P2802902	1.8 - 6.0	90	20	19.5	31	SKC6	-
	SK40AD/B-SKA06-120	P2802903	1.8 - 6.0	120	20	19.5	31	SKC6	-
	SK40AD/B-SKA06-150	P2802904	1.8 - 6.0	150	20	19.5	31	SKC6	-
	SK40AD/B-SKA10-90	P2802905	1.8 - 10.0	90	28	27.5	35	SKC10	-
	SK40AD/B-SKA10-120	P2802906	1.8 - 10.0	120	28	27.5	35	SKC10	-
	SK40AD/B-SKA10-150	P2802907	1.8 - 10.0	150	28	27.5	35	SKC10	-
	SK40AD/B-SKA13-90	P2802908	2.75 - 13.0	90	33	33	43.6	SKC13	-
	SK40AD/B-SKA13-120	P2802909	2.75 - 13.0	120	33	33	43.6	SKC13	-
	SK40AD/B-SKA13-150	P2802910	2.75 - 13.0	150	33	33	43.6	SKC13	-
	SK40AD/B-SKA16-90	P2802911	2.75 - 16.0	90	40	40	52	SKC16	-
	SK40AD/B-SKA16-120	P2802912	2.75 - 16.0	120	40	40	52	SKC16	-
	SK40AD/B-SKA16-150	P2802913	2.75 - 16.0	150	40	40	52	SKC16	-
	SK40AD/B-SKA20-90	P2802914	3.5 - 20.0	90	48.5	48.5	59.6	SKC20	-
	SK40AD/B-SKA20-120	P2802915	3.5 - 20.0	120	48.5	48.5	59.6	SKC20	-
SK40AD/B-SKA20-150	P2802916	3.5 - 20.0	150	48.5	48.5	59.6	SKC20	-	
SK40AD/B-SKA25-90	P2802917	16.0 - 25.4	90	55	55	63.4	SKC25	-	
SK40AD/B-SKA25-120	P2802918	16.0 - 25.4	120	55	55	63.4	SKC25	-	
SK40AD/B-SKA25-150	P2802919	16.0 - 25.4	150	55	55	63.4	SKC25	-	

► CAT(ASME B5.50) taper products are available.  
► Balancing grade G2.5 at 25,000RPM or U max. < 1gmm.  
► For applicable Collet, Nut and Spanner, please refer to page D315~D317.

► NEXT PAGE

SK (DIN 69871)

CBT (BT DUAL CONTACT)

BT (JIS B6339/ MAS 403)

HSK (DIN 69893/ ISO 12164)

STRAIGHT

ISO, NT, MTA/MTB, GOST

TOOL HOLDER SET

BORING SYSTEM

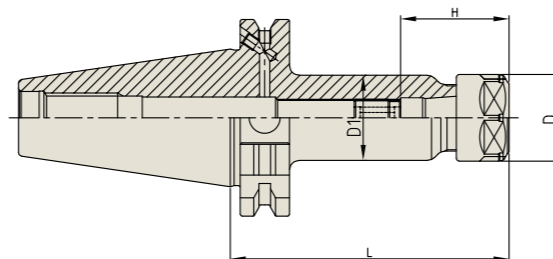
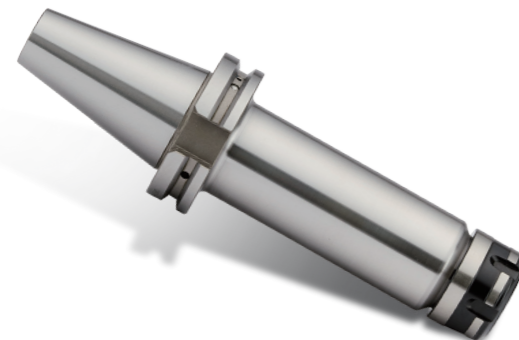
ACCESSORY & PARTS



SKA

### SK SLIM CHUCK

SK SCHLANKE FUTTER  
MANDRIN TYPE SK MINCE  
SK MANDRINI SOTTILI  
PORTAHERRAMIENTAS SK EJE REDUCIDO



Unit : mm

TAPER No.	MODEL No.	EDP No.	CLAMPING RANGE	L	D	D1	H	COLLET	WEIGHT (Kg)
50	SK50AD/B-SKA06-105	P2802920	1.8 - 6.0	105	20	19.5	31	SKC6	-
	SK50AD/B-SKA06-135	P2802921	1.8 - 6.0	135	20	19.5	31	SKC6	-
	SK50AD/B-SKA06-165	P2802922	1.8 - 6.0	165	20	19.5	31	SKC6	-
	SK50AD/B-SKA06-195	P2802923	1.8 - 6.0	195	20	19.5	31	SKC6	-
	SK50AD/B-SKA10-105	P2802924	1.75 - 10.0	105	28	27.5	35	SKC10	-
	SK50AD/B-SKA10-135	P2802925	1.75 - 10.0	135	28	27.5	35	SKC10	-
	SK50AD/B-SKA10-165	P2802926	1.75 - 10.0	165	28	27.5	35	SKC10	-
	SK50AD/B-SKA10-195	P2802927	1.75 - 10.0	195	28	27.5	35	SKC10	-
	SK50AD/B-SKA13-105	P2802928	2.75 - 13.0	105	33	33	43.6	SKC13	-
	SK50AD/B-SKA13-135	P2802929	2.75 - 13.0	135	33	33	43.6	SKC13	-
	SK50AD/B-SKA13-165	P2802930	2.75 - 13.0	165	33	33	43.6	SKC13	-
	SK50AD/B-SKA13-195	P2802931	2.75 - 13.0	195	33	33	43.6	SKC13	-
	SK50AD/B-SKA16-105	P2802932	2.75 - 13.0	105	40	40	52	SKC16	-
	SK50AD/B-SKA16-135	P2802933	2.75 - 13.0	135	40	40	52	SKC16	-
	SK50AD/B-SKA16-165	P2802934	2.75 - 13.0	165	40	40	52	SKC16	-
	SK50AD/B-SKA16-195	P2802935	2.75 - 13.0	195	40	40	52	SKC16	-
	SK50AD/B-SKA20-105	P2802936	3.5 - 20.0	105	48.5	48.5	59.6	SKC20	-
	SK50AD/B-SKA20-135	P2802937	3.5 - 20.0	135	48.5	48.5	59.6	SKC20	-
	SK50AD/B-SKA20-165	P2802938	3.5 - 20.0	165	48.5	48.5	59.6	SKC20	-
	SK50AD/B-SKA20-195	P2802939	3.5 - 20.0	195	48.5	48.5	59.6	SKC20	-
SK50AD/B-SKA25-105	P2802940	16.0 - 25.4	105	55	55	63.4	SKC25	-	
SK50AD/B-SKA25-135	P2802941	16.0 - 25.4	135	55	55	63.4	SKC25	-	
SK50AD/B-SKA25-165	P2802942	16.0 - 25.4	165	55	55	63.4	SKC25	-	
SK50AD/B-SKA25-195	P2802943	16.0 - 25.4	195	55	55	63.4	SKC25	-	

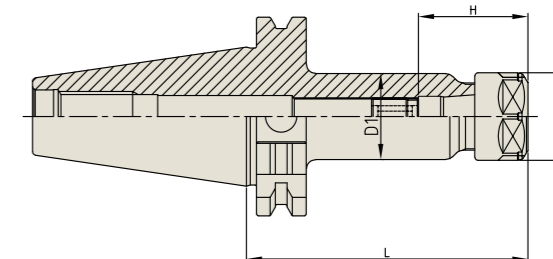
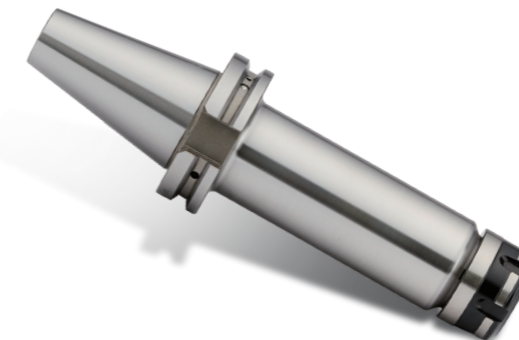
- ▶ CAT(ASME B5.50) taper products are available.
- ▶ Balancing grade G2.5 at 25,000RPM or U max. < 1gmm.
- ▶ For applicable Collet, Nut and Spanner, please refer to page D315~D317.



SKA

### SK SLIM CHUCK

SK SCHLANKE FUTTER  
MANDRIN TYPE SK MINCE  
SK MANDRINI SOTTILI  
PORTAHERRAMIENTAS SK EJE REDUCIDO



Unit : mm

TAPER No.	MODEL No.	EDP No.	CLAMPING RANGE	L	D	D1	H	COLLET	WEIGHT (Kg)	
30	SK30-SKA06-60	P2802801	1.8 - 6.0	60	20	19.5	31	SKC6	-	
	SK30-SKA06-90	P2802802	1.8 - 6.0	90	20	19.5	31	SKC6	-	
	SK30-SKA10-60	P2802803	1.75 - 10.0	60	28	27.5	35	SKC10	-	
	SK30-SKA10-90	P2802804	1.75 - 10.0	90	28	27.5	35	SKC10	-	
	SK30-SKA13-60	P2802805	2.75 - 13.0	60	33	33	43.6	SKC13	-	
	SK30-SKA13-90	P2802806	2.75 - 13.0	90	33	33	43.6	SKC13	-	
	SK30-SKA16-60	P2802807	2.75 - 16.0	60	40	40	52	SKC16	-	
	SK30-SKA16-90	P2802808	2.75 - 16.0	90	40	40	52	SKC16	-	
	SK30-SKA20-60	P2802809	3.5 - 20.0	60	48.5	48.5	59.6	SKC20	-	
	SK30-SKA20-90	P2802810	3.5 - 20.0	90	48.5	48.5	59.6	SKC20	-	
	SK30-SKA25-90	P2802811	16.0 - 25.4	90	55	55	63.4	SKC25	-	
	40	SK40-SKA06-90	P2802812	1.8 - 6.0	90	20	19.5	31	SKC6	-
		SK40-SKA06-120	P2802813	1.8 - 6.0	120	20	19.5	31	SKC6	-
		SK40-SKA06-150	P2802814	1.8 - 6.0	150	20	19.5	31	SKC6	-
SK40-SKA10-90		P2802815	1.75 - 10.0	90	28	27.5	35	SKC10	-	
SK40-SKA10-120		P2802816	1.75 - 10.0	120	28	27.5	35	SKC10	-	
SK40-SKA10-150		P2802817	1.75 - 10.0	150	28	27.5	35	SKC10	-	
SK40-SKA13-90		P2802818	2.75 - 13.0	90	33	33	43.6	SKC13	-	
SK40-SKA13-120		P2802819	2.75 - 13.0	120	33	33	43.6	SKC13	-	
SK40-SKA13-150		P2802820	2.75 - 13.0	150	33	33	43.6	SKC13	-	
SK40-SKA16-90		P2802821	2.75 - 16.0	90	40	40	52	SKC16	-	
SK40-SKA16-120		P2802822	2.75 - 16.0	120	40	40	52	SKC16	-	
SK40-SKA16-150		P2802823	2.75 - 16.0	150	40	40	52	SKC16	-	
SK40-SKA20-90		P2802824	3.5 - 20.0	90	48.5	48.5	59.6	SKC20	-	
SK40-SKA20-120		P2802825	3.5 - 20.0	120	48.5	48.5	59.6	SKC20	-	
SK40-SKA20-150	P2802826	3.5 - 20.0	150	48.5	48.5	59.6	SKC20	-		
SK40-SKA25-90	P2802827	16.0 - 25.4	90	55	55	63.4	SKC25	-		
SK40-SKA25-120	P2802828	16.0 - 25.4	120	55	55	63.4	SKC25	-		
SK40-SKA25-150	P2802829	16.0 - 25.4	150	55	55	63.4	SKC25	-		

- ▶ CAT(ASME B5.50) taper products are available.
- ▶ For applicable Collet, Nut and Spanner, please refer to page D315~D317.

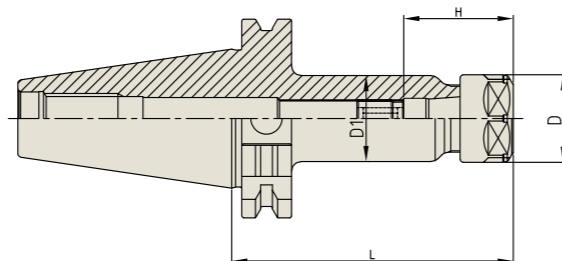
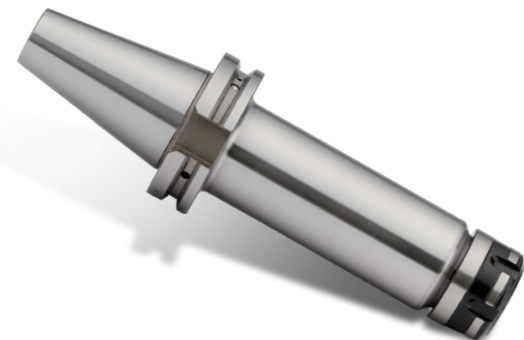
▶ NEXT PAGE



SKA

**SK SLIM CHUCK**

SK SCHLANKE FUTTER  
MANDRIN TYPE SK MINCE  
SK MANDRINI SOTTILI  
PORTAHERRAMIENTAS SK EJE REDUCIDO



Unit : mm									
TAPER No.	MODEL No.	EDP No.	CLAMPING RANGE	L	D	D1	H	COLLET	WEIGHT (Kg)
50	SK50-SKA06-105	P2802830	1.8 - 6.0	105	20	19.5	31	SKC6	-
	SK50-SKA06-135	P2802831	1.8 - 6.0	135	20	19.5	31	SKC6	-
	SK50-SKA06-165	P2802832	1.8 - 6.0	165	20	19.5	31	SKC6	-
	SK50-SKA06-195	P2802833	1.8 - 6.0	195	20	19.5	31	SKC6	-
	SK50-SKA10-105	P2802834	1.75 - 10.0	105	28	27.5	35	SKC10	-
	SK50-SKA10-135	P2802835	1.75 - 10.0	135	28	27.5	35	SKC10	-
	SK50-SKA10-165	P2802836	1.75 - 10.0	165	28	27.5	35	SKC10	-
	SK50-SKA10-195	P2802837	1.75 - 10.0	195	28	27.5	35	SKC10	-
	SK50-SKA13-105	P2802838	2.75 - 13.0	105	33	33	43.6	SKC13	-
	SK50-SKA13-135	P2802839	2.75 - 13.0	135	33	33	43.6	SKC13	-
	SK50-SKA13-165	P2802840	2.75 - 13.0	165	33	33	43.6	SKC13	-
	SK50-SKA13-195	P2802841	2.75 - 13.0	195	33	33	43.6	SKC13	-
	SK50-SKA16-105	P2802842	2.75 - 16.0	105	40	40	52	SKC16	-
	SK50-SKA16-135	P2802843	2.75 - 16.0	135	40	40	52	SKC16	-
	SK50-SKA16-165	P2802844	2.75 - 16.0	165	40	40	52	SKC16	-
	SK50-SKA16-195	P2802845	2.75 - 16.0	195	40	40	52	SKC16	-
	SK50-SKA20-105	P2802846	3.5 - 20.0	105	48.5	48.5	59.6	SKC20	-
	SK50-SKA20-135	P2802847	3.5 - 20.0	135	48.5	48.5	59.6	SKC20	-
	SK50-SKA20-165	P2802848	3.5 - 20.0	165	48.5	48.5	59.6	SKC20	-
	SK50-SKA20-195	P2802849	3.5 - 20.0	195	48.5	48.5	59.6	SKC20	-
SK50-SKA25-105	P2802850	16.0 - 25.4	105	55	55	63.4	SKC25	-	
SK50-SKA25-135	P2802851	16.0 - 25.4	135	55	55	63.4	SKC25	-	
SK50-SKA25-165	P2802852	16.0 - 25.4	165	55	55	63.4	SKC25	-	
SK50-SKA25-195	P2802853	16.0 - 25.4	195	55	55	63.4	SKC25	-	

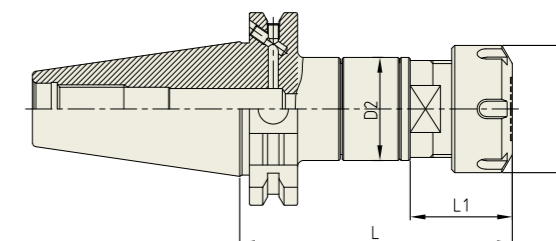
► CAT(ASME B5.50) taper products are available.  
► For applicable Collet, Nut and Spanner, please refer to page D315~D317.



SYTER

**SYNCHRO TAPPING CHUCK (ER TYPE)**

SK SCHLANKE FUTTER  
MANDRIN TYPE SK MINCE  
SK MANDRINI SOTTILI  
PORTAHERRAMIENTAS SK EJE REDUCIDO



Unit : mm										
TAPER No.	MODEL No.	EDP No.	TAP SIZE	NUT/ COLLET	D1	D2	L	L1	TENSION/ COMPRESSION	WEIGHT (Kg)
40	SK40AD/B-SYTER12-79	P2773701	M3-M12	ER16	28	34	79	26	±0.2	1.00
	SK40AD/B-SYTER16-85	P2773702	M3-M16	ER20	34	34	85	27	±0.2	1.08
	SK40AD/B-SYTER20-90	P2773703	M3-M20	ER25	42	34	90	34	±0.2	1.08
	SK40AD/B-SYTER27-100	P2773704	M4-M27	ER32	50	45	100	31	±0.2	1.37
	SK40AD/B-SYTER33-120	P2773705	M4-M33	ER40	63	62	120	35	±0.2	2.16
50	SK50AD/B-SYTER12-79	P2773706	M3-M12	ER16	28	34	79	24	±0.2	2.83
	SK50AD/B-SYTER16-85	P2773707	M3-M16	ER20	34	34	85	27	±0.2	2.86
	SK50AD/B-SYTER20-90	P2773708	M3-M20	ER25	42	34	90	34	±0.2	2.87
	SK50AD/B-SYTER27-100	P2773709	M4-M27	ER32	50	45	100	31	±0.2	3.04
	SK50AD/B-SYTER33-105	P2773710	M4-M33	ER40	63	62	105	35	±0.2	3.93

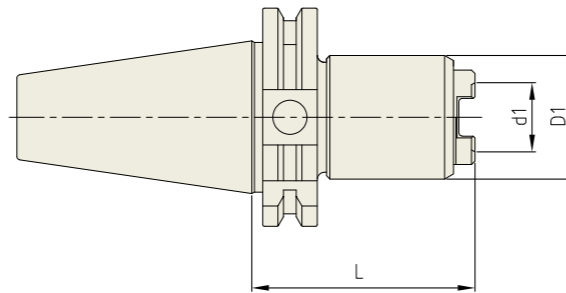
► Feature :  
- Compensation for synchronization errors to extend tap life and to improve thread quality.  
- To compensate for pitch tolerances of taps.  
- For machine with synchronized spindle.  
► CAT(ASME B5.50) taper and Inch type products are available.  
► ER collet of page D296~D302, and Tap ER collet of page D303~D304 are applicable.

# SYNCHRO TAPPING CHUCK

SYTC

## SYNCHRO TAPPING CHUCK (QUICK CHANGE TYPE)

SYNCHRO GEWINDESCHNEID-SCHNELLWECHSELFUTTER  
 SYNCHRO TARAUDER À CHANGEMENT RAPIDE  
 SINCRIO MANDRINO PER MASCHIARE  
 SINCRIO PORTAMACHOS DE CAMBIO RAPIDO



Unit : mm

TAPER No.	MODEL No.	EDP No.	TAP SIZE	TAP ADAPTOR	d1	D1	L	WEIGHT (Kg)
30	SK30-SYTC12-65	P2774207	M3-M12	TCS12	19	36	65	0.50
	SK30-SYTC20-89	P2774208	M6-M24	TCS24	31	50	89	1.00
40	SK40-SYTC12-65	P2774201	M3-M12	TCS12	19	36	65	1.10
	SK40-SYTC20-79	P2774202	M6-M24	TCS24	31	50	79	1.50
	SK40-SYTC33-115	P2774203	M18-M38	TCS38	48	74	115	3.30
50	SK50-SYTC12-65	P2774204	M3-M12	TCS12	19	36	65	3.00
	SK50-SYTC20-79	P2774205	M6-M24	TCS24	31	50	79	3.30
	SK50-SYTC33-115	P2774206	M18-M38	TCS38	48	74	115	5.20

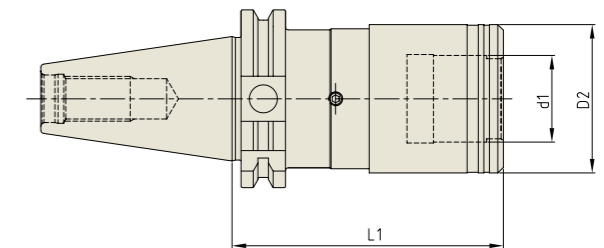
- Feature :
  - Compensation for synchronization errors to extend tap life and to improve thread quality.
  - To compensate for pitch tolerances of taps.
  - For machine with synchronized spindle.
- CAT(ASME B5.50) taper and Inch type products are available.
- For applicable Tap Adaptor, please refer to the page D318~D319.

# ONE STEP TAPPING CHUCK

OTC

## ONE STEP TAPPING CHUCK

GEWINDE-SCHNELLWECHSELFUTTER  
 MANDRIN DE TARAUDAGE À CHANGEMENT RAPIDE  
 PORTAMASCHI A CAMBIO RAPIDO  
 MANDRINO DE CAMBIO RÁPIDO CON ROSCA



Unit : mm

TAPER No.	MODEL No.	EDP No.	d1	D2	L1	LENGTH COMPENSATION		WEIGHT (Kg)
						Compression	Tension	
40	SK40-OTC-M3-M12-59.5	P2802351	19	36	59	7.5	7.5	1.10
	SK40-OTC-M8-M20-97	P2802352	31	53	97	12.5	12.5	1.50
	SK40-OTC-M14-M36-149	P2802353	48	78	149	20	20	3.30
50	SK50-OTC-M3-M12-59	P2802354	19	36	59	7.5	7.5	3.00
	SK50-OTC-M8-M20-83	P2802355	31	53	83	12.5	12.5	3.30
	SK50-OTC-M14-M36-138	P2802356	48	78	138	20	20	5.20

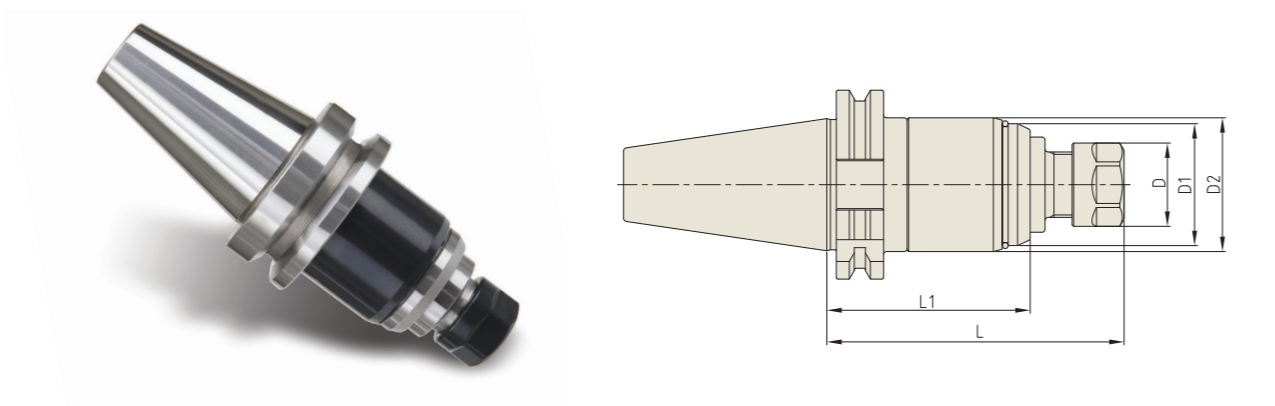
- CAT(ASME B5.50) taper and Inch type products are available.
- For applicable Tap Adaptor, please refer to the page D318~D319.

**YIG TAPPING ER CHUCK**

**TER**

**TAPPING ER CHUCK**

ER - GEWINDESCHNEIDFUTTER  
 MANDRIN DE TARAUDAGE PINCE ER  
 MANDRINI PORTAPINZA ER PER MASCHIATURA  
 PORTAPINZAS ER PARA MACHOS



Unit : mm

TAPER No.	MODEL No.	EDP No.	D	D1	D2	L	L1	NUT / COLLET	WEIGHT (Kg)
40	SK40-TER16-100	P2774001	28	41	45	100	68.4	ER16	1.65
	SK40-TER16-150	P2774002	28	41	45	150	118.4	ER16	1.85
	SK40-TER32-130	P2774003	50	58	63	130	92	ER32	2.10
50	SK40-TER32-150	P2774004	50	58	63	150	112	ER32	2.30
	SK50-TER16-115	P2774005	28	41	45	115	79.4	ER16	4.30
	SK50-TER16-150	P2774006	28	41	45	150	114.4	ER16	4.50
	SK50-TER32-120	P2774007	50	58	63	120	83	ER32	4.65
	SK50-TER32-150	P2774008	50	58	63	150	113	ER32	4.85

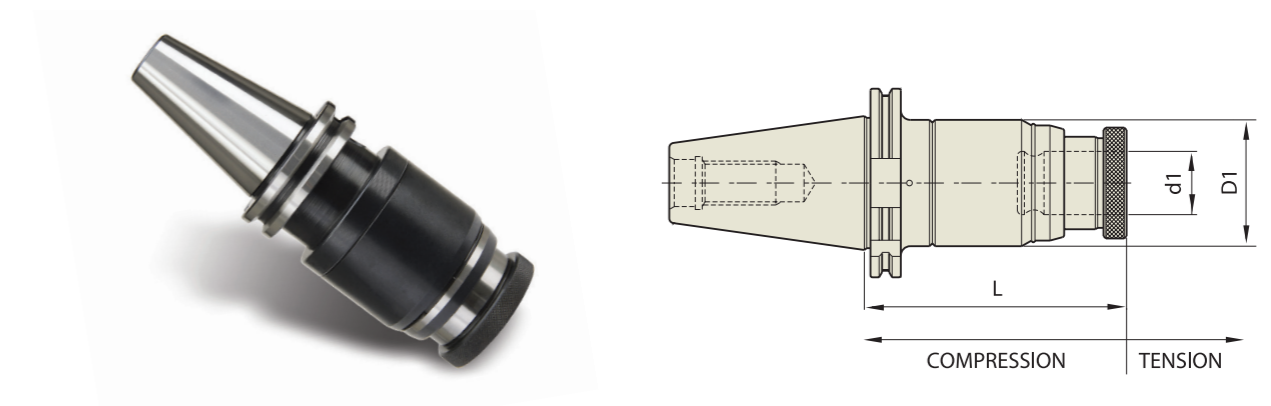
▶ CAT(ASME B5.50) taper and Inch type products are available.  
 ▶ ER collet of page D296~D302, and Tap ER collet of page D303~D304 are applicable.

**YIG TAPPING CHUCK**

**TC**

**TAPPING CHUCK**

GEWINDESCHNEID - SCHNELLWECHSELFUTTER  
 TARAUDER À CHANGEMENT RAPIDE  
 MANDRINO PER MASCHIARE  
 PORTAMACHOS DE CAMBIO RAPIDO



Unit : mm

TAPER No.	MODEL No.	EDP No.	TAP SIZE	TAP ADAPTOR	LENGTH COMPENSATION		d1	D1	L	WEIGHT (Kg)
					Compression	Tension				
40	SK40-TC12-90	P2520001	M3-M12	TCS12	5	15	19	45	90	1.30
	SK40-TC12-130	P2520006	M3-M12	TCS12	5	15	19	45	130	1.80
	SK40-TC24-120	P2520002	M6-M24	TCS24	5	20	31	63	120	2.50
50	SK40-TC24-142	P2520007	M6-M24	TCS24	5	20	31	63	142	2.80
	SK50-TC12-130	P2520003	M3-M12	TCS12	5	15	19	45	130	4.30
	SK50-TC12-175	P2520008	M3-M12	TCS12	5	15	19	45	175	5.50
	SK50-TC24-142	P2520004	M6-M24	TCS24	5	20	31	63	142	5.30
	SK50-TC24-187	P2520009	M6-M24	TCS24	5	20	31	63	187	7.80
	SK50-TC38-175	P2520005	M18-M38	TCS38	10	25	48	98	175	7.50

▶ CAT(ASME B5.50) taper and Inch type products are available.  
 ▶ For applicable Tap Adaptor, please refer to page D318~D319.

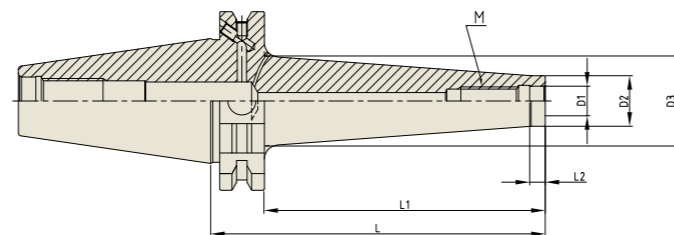
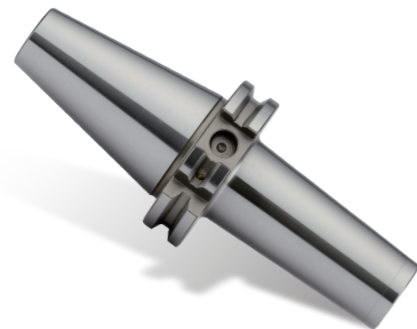


# YIG COPY MILL ARBOR

M

## COPY MILL ARBOR

WERKZEUGAUFNAHME FÜR EINSCHRAUBFRÄSER MIT GEWINDE  
 MANDRIN POUR FRAISES À QUEUE FILETÉE AVEC FILETAGE  
 MANDRINO PER FRESE MODULARI FILETTATE  
 PORTAHERRAMIENTAS PARA FRESAS DE ENROSCAR CON ROSCA



Unit : mm									
TAPER No.	MODEL No. (M-L1)	EDP No.	D1	D2	D3	L	L1	L2	WEIGHT (Kg)
40	SK40AD/B-M6-25	P2801701	6.5	10	13	44	25	5	0.80
	SK40AD/B-M8-25	P2801702	8.5	13	15	44	25	5	0.80
	SK40AD/B-M8-50	P2801703	8.5	13	23	69	50	5	0.86
	SK40AD/B-M8-75	P2801704	8.5	13	23	94	75	5	0.90
	SK40AD/B-M8-100	P2801705	8.5	13	25	119	100	5	0.97
	SK40AD/B-M10-5	P2801706	10.5	18	18	24	5	5	0.77
	SK40AD/B-M10-25	P2801707	10.5	18	20	44	25	5	0.79
	SK40AD/B-M10-50	P2801708	10.5	18	23	69	50	5	0.85
	SK40AD/B-M10-75	P2801709	10.5	18	28	94	75	5	0.87
	SK40AD/B-M10-100	P2801710	10.5	18	32	119	100	5	1.12
	SK40AD/B-M10-150	P2801711	10.5	18	36.5	169	150	5	1.38
	SK40AD/B-M12-5	P2801712	12.5	21	21	24	5	5	0.77
	SK40AD/B-M12-25	P2801713	12.5	21	24	44	25	5	0.82
	SK40AD/B-M12-50	P2801714	12.5	21	24	69	50	5	0.85
	SK40AD/B-M12-75	P2801715	12.5	21	31	94	75	5	1.02
	SK40AD/B-M12-100	P2801716	12.5	21	33	119	100	5	1.09
	SK40AD/B-M12-150	P2801717	12.5	21	40	169	150	5	1.53
	SK40AD/B-M16-5	P2801718	17	29	29	24	5	5	0.77
	SK40AD/B-M16-25	P2801719	17	29	29	44	25	5	0.85
	SK40AD/B-M16-50	P2801720	17	29	34	69	50	5	1.00
SK40AD/B-M16-75	P2801721	17	29	34	94	75	5	0.99	
SK40AD/B-M16-100	P2801722	17	29	36	119	100	5	1.34	
SK40AD/B-M16-150	P2801723	17	29	42.5	169	150	5	1.84	
50	SK50AD/B-M8-50	P2801724	8.5	13	23	69	50	5	2.69
	SK50AD/B-M10-50	P2801725	10.5	18	23	69	50	5	2.71
	SK50AD/B-M10-100	P2801726	10.5	18	32	119	100	10	2.88
	SK50AD/B-M10-150	P2801727	10.5	18	36.5	169	150	10	3.17
	SK50AD/B-M12-50	P2801728	12.5	21	24	69	50	5	2.67
	SK50AD/B-M12-100	P2801729	12.5	21	33	119	100	10	2.93
	SK50AD/B-M12-150	P2801730	12.5	21	40	169	150	10	3.33
	SK50AD/B-M16-50	P2801731	17	29	34	69	50	5	2.79
	SK50AD/B-M16-100	P2801732	17	29	36	119	100	10	3.00
	SK50AD/B-M16-150	P2801733	17	29	42.5	169	150	10	3.60

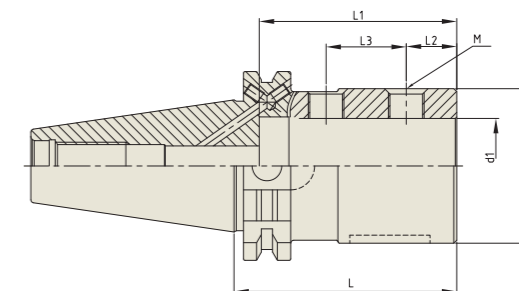
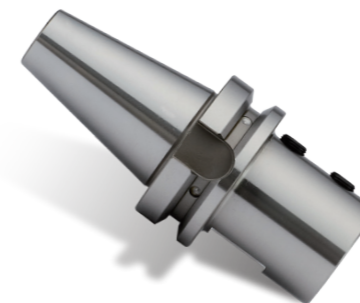
► Balancing grade G2.5 at 25,000RPM or U max. < 1gmm.  
 ► For the screw-in milling cutters with thread.

# YIG INDEXABLE DRILL HOLDER

SL

## INDEXABLE DRILL HOLDER

WERKZEUGHALTER FÜR VOLLBOHRER  
 MANDRIN POUR FORETS À PLAQUETTES  
 MANDRINO PER PUNTE A INSERTI  
 SOPORTE PARA HERRAMIENTAS PARA BROCAS DE ACERO MACIZO

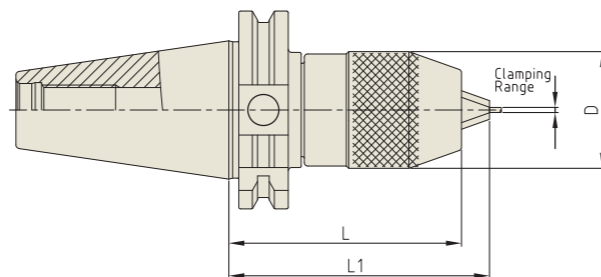


Unit : mm										
TAPER No.	MODEL No.	EDP No.	d1	D1	L	L1	L2	L3	M	WEIGHT (Kg)
40	SK40AD/B-SL20-65	P2802001	20	40	65	56	15	20	M10	1.07
	SK40AD/B-SL25-70	P2802002	25	45	70	61.5	17	23	M12	1.15
	SK40AD/B-SL32-75	P2802003	32	52	75	66.5	17	27	M12	1.27
	SK40AD/B-SL40-115	P2802004	40	60	115	73	22	28	M16	2.10
50	SK50AD/B-SL20-70	P2802005	20	40	70	54	15	20	M10	3.00
	SK50AD/B-SL25-70	P2802006	25	45	70	64	17	23	M12	3.04
	SK50AD/B-SL32-75	P2802007	32	52	75	68	17	27	M12	3.14
	SK50AD/B-SL40-80	P2802008	40	60	80	77	22	28	M16	3.26

► CAT(ASME B5.50) taper and Inch type products are available.  
 ► For the indexable drills with parallel shank.

**NC DRILL CHUCK (KEYLESS TYPE)**

NC - BOHRFUTTER  
MANDRIN DE PERÇAGE NC  
NC MANDRINI PORTA PUNTE  
PORTABROCAS PARA BROCAS NC



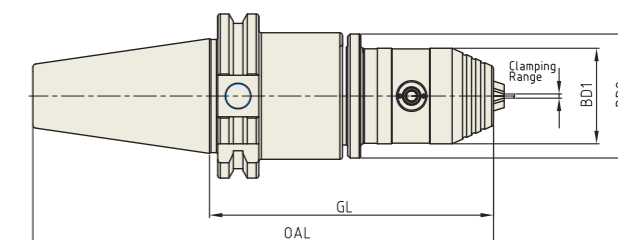
Unit : mm

TAPER No.	MODEL No.	EDP No.	CLAMPING RANGE	D	L (Min.)	L1 (Max.)	WEIGHT (Kg)
40	SK40-NPU8-80	P2802201	0.3 - 8.0	36.5	80	85.7	-
	SK40-NPU8-110	P2802202	0.3 - 8.0	36.5	110	115.7	-
	SK40-NPU8-150	P2802203	0.3 - 8.0	36.5	150	155.7	-
	SK40-NPU13-95	P2802204	1.0 - 13.0	50	95	105	-
	SK40-NPU13-130	P2802205	1.0 - 13.0	50	130	140	-
	SK40-NPU13-150	P2802206	1.0 - 13.0	50	150	160	-
50	SK50-NPU8-80	P2802207	0.3 - 8.0	36.5	80	85.7	-
	SK50-NPU8-110	P2802208	0.3 - 8.0	36.5	110	115.7	-
	SK50-NPU8-150	P2802209	0.3 - 8.0	36.5	150	155.7	-
	SK50-NPU13-95	P2802210	1.0 - 13.0	50	95	105	-
	SK50-NPU13-130	P2802211	1.0 - 13.0	50	130	140	-
	SK50-NPU13-150	P2802212	1.0 - 13.0	50	150	160	-

▶ CAT(ASME B5.50) taper and Inch type products are available.  
▶ Supplied with hook wrench. (Size NPU 8 : 8S, NPU 13 : 13S)

**NC DRILL CHUCK (HEX. KEY TYPE)**

NC - BOHRFUTTER  
MANDRIN DE PERÇAGE NC  
NC MANDRINI PORTA PUNTE  
PORTABROCAS PARA BROCAS NC



Unit : mm

TAPER No.	MODEL No.	EDP No.	CLAMPING RANGE	OAL	GL	BD1	BD2	WEIGHT (Kg)
40	SK40-HKD8-90	P2804002	0.3 - 8.0	158.4	90	37	48	-
	SK40-HKD13-100	P2804001	0.3 - 13.0	168.4	100	50.1	50.1	-
	SK40AD/B-HKD8-110	P2804003	0.3 - 8.0	178.4	110	37	48	-
	SK40AD/B-HKD13-130	P2804004	0.3 - 13.0	198.4	130	50.1	50.1	-

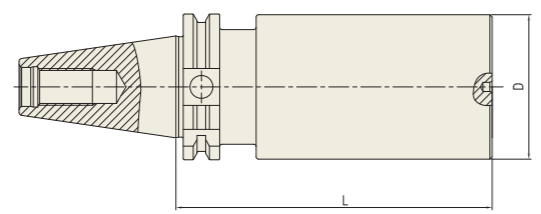
▶ CAT(ASME B5.50) taper and Inch type products are available.  
▶ Supplied with hex. wrench. (Size HKD 8 : 4mm, HKD 13 : 6mm)

**YG** BLANK BAR

**BL**

**BLANK BAR**

BOHRSTANGENROHLING  
EBAUCHE DE BARRES D ALÉSAGE  
BARRA ALESATRICE GREZZA  
PIEZA EN BRUTO PARA BARRAS DE MANDRINAR



Unit : mm

TAPER No.	MODEL No.	EDP No.	D	L	WEIGHT(Kg)
40	SK40A-BL63-250	P2779196	63	250	6.18
50	SK50A-BL97-315	P2779197	97	315	18.67

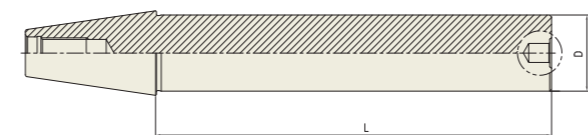
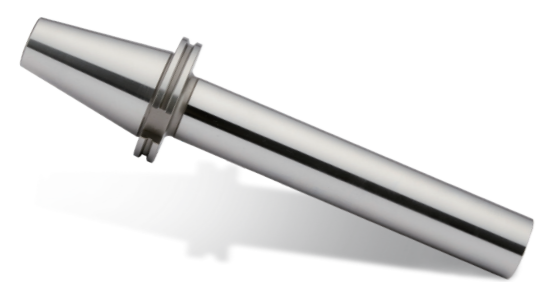
► CAT(ASME B5.50) taper and Inch type products are available.

**YG** TEST BAR

**TB**

**TEST BAR**

KONTROLLDORN  
MANDRIN DE CONTRÔLE  
MANDRINO DI CONTROLLO  
MANDRIL DE CONTROL



Unit : mm

TAPER No.	MODEL No.	EDP No.	D	L	WEIGHT(Kg)
40	SK40A-TB40-300	P2802301	40	300	3.45
50	SK50A-TB50-300	P2803302	50	300	6.44

► CAT(ASME B5.50) taper and Inch type products are available.

**YG-1 TOOLING SYSTEM**

**CBT**  
(BT DUAL CONTACT)



- HYDRAULIC CHUCK
- SHRINK FIT HOLDER
- ER COLLET CHUCK
- END MILL HOLDER (SIDE LOCK ARBOR)
- SHELL MILL ARBOR
- COMBI-SHELL MILL ARBOR
- POWER MILLING CHUCK
- SK SLIM CHUCK
- TAPPING ER CHUCK
- FACE MILL ARBOR
- NC DRILL CHUCK